

Minnesota WoodTurners Association

A LOCAL CHAPTER OF THE AMERICAN ASSOCIATION OF WOODTURNERS

AAW | AMERICAN ASSOCIATION
OF WOODTURNERS

Volume 2021 June



*Profiles In
Turning*

Lee Luebke

p. 9



BOARD MEMBERS

Officers

PRESIDENT

Lee Luebke

VICE PRESIDENT AND LIBRARY

Janese Evans

TREASURER

Mark Debe

RECORDING SECRETARY

Rosanne Gold

Directors

Reid Zimmerman **501c3 Coordinator**

Marc Paulson

MEMBERSHIP DIRECTOR

Ken Crea

TECHNICAL SUPPORT

Dick Hicks

Marc Paulson

**AAW REPRESENTATIVE &
DEMONSTRATIONS**

Linda Ferber

OTHER STAFF SUPPORT

Bob Meyer - Group Purchasing

Dan Larson - Class Coordinator

Mike Hunter – Professional Demonstrations

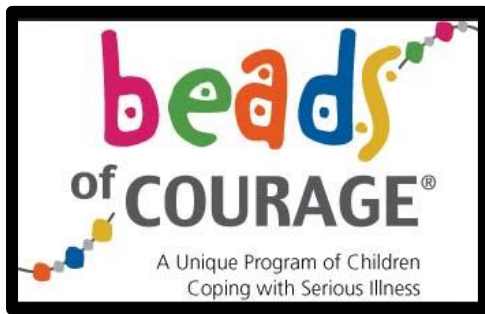
Paul Laes – Sales at Meetings

Mike Rohrer - Newsletter

In This Issue

| | |
|---------------------|-------|
| Beads of Courage | p. 3 |
| Arden Griep | p. 4 |
| Profiles in Turning | |
| Lee Luebke | p. 9 |
| MWA Demo | |
| Andrew Hall | p. 28 |
| Instant Gallery | p. 33 |
| Hands-On-Demo | p. 44 |
| Ellsworth Caliper | p. 46 |
| Ask A Turner | p. 53 |
| Announcements | p. 56 |
| Member Challenge | p. 59 |
| Contract Turning | p. 65 |
| Bulletin Board | p. 66 |
| New Members | p. 70 |
| Lathe Contact | p. 72 |
| Member Help Line | p. 74 |
| MWA Demos | p. 75 |
| Editor's Notes | p. 77 |





**Beads of Courage is
now being coordinated
by Jay Schulz**

Greg Just





Arden Griep, MWA member since 2000, passed away May 21. Here are some items of interest about this outstanding member of the MWA.

Arden's winning entry in an MWA Monthly Challenge



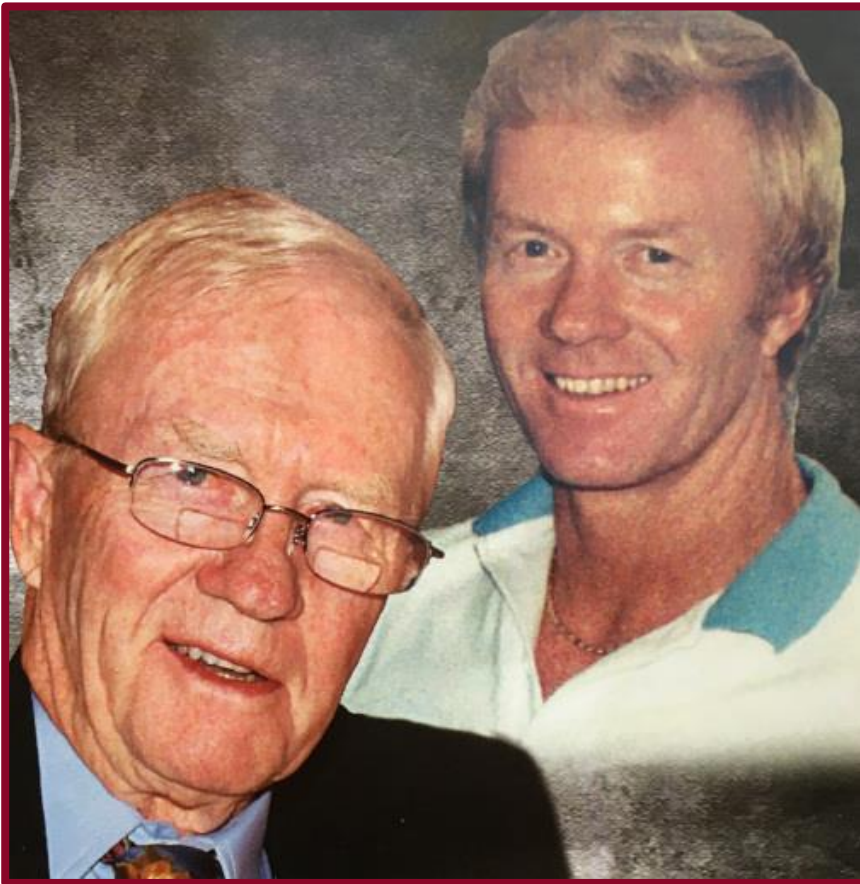
Arden's artistic prowess included painting as well as woodturning

Arden was born in 1938. In early childhood, Arden developed a love of multiple lifelong hobbies. At age 14, he decided to ski down the Hyland Hills ski jump for the first time in the midst of a competition of which he was not aware. Arden didn't win the competition because he wasn't supposed to be in it, but he did get his picture in the Star Tribune.

Obviously fearless on the slopes, Arden went on to compete in many downhill ski events as a racer, winning countless medals and trophies. Arden was particularly proud of his first place in state competition for cross country skiing, beating out the Norwegian skier against whom he was competing.



Arden Griegg (cont'd)



Even before getting his driver's license, Arden was helping his dad at the asphalt company. After graduating from Roosevelt High School, he started his own trucking business at age 21, which he then expanded into an asphalt paving company. When his brother Dale came home from the Navy, he joined Arden and formed Griegg Brothers' Blacktopping, which was operated together by Dale and Arden for many years. Later, the brothers each formed their own asphalt companies and Arden became the sole owner of Arden Griegg Blacktopping, which he operated until his retirement at age 62.

He enjoyed many ski trips with his family in Austria, Canada, Michigan and most of the western United States. Arden was an avid water-skier from an early age. He also competed as a gymnast in high school. After retirement, Arden was an active bicyclist with the Twin Cities Bike Club.

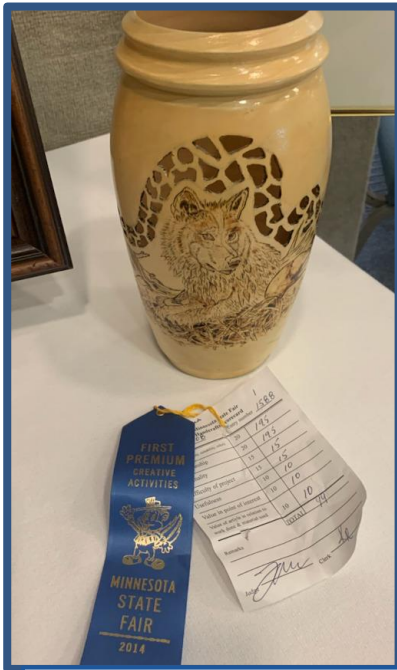


Arden was an extraordinary craftsman and artist. He was even dubbed the “Master Woodturner” in the RV park where they lived. He also excelled in oil and water-color painting.



Arden's paintings and many skiing trophies

Throughout his life, Arden sold and gave away countless beautiful pieces of artwork and paintings, winning many blue ribbons at the Minnesota State Fair. He was always tinkering, customizing and fixing things.



Arden's first prizes at the State Fair



Even just one week before his passing, he was in the shop with his great grandkids, passing on his knowledge of woodworking. Arden not only crafted the beautiful urn that will be his final resting place, but also made one for his beloved wife June.



**I'VE HEARD ABOUT THIS MY WHOLE
LIFE**



PROFILES IN TURNING

Lee Luebke

This is the 17th in a series of profiles of members of the Minnesota Association of WoodTurners. The last one was in the November 2019 newsletter. The series will be continued.



MWA: Lee, when did you start woodturning and how did you get started?

Lee: I started turning in Junior High School, but I didn't get back into it until I was in my 50s. I bought a used Shopsmith and upgraded it with a new motor. Turning was something I'd always wanted to do. The kids got older and went to college and that's when I thought I could devote some time to developing my woodturning skills.

MWA: How did your turning progress?

Lee: I was teaching myself and was looking for help on using tools and sharpening tools. I was using the Shopsmith sharpening jig. I had to break down the Shopsmith to sharpen tools. About this time, I started getting some Oneway chucks.



Lee's refurbished Shopsmith

MWA: How long have you been a member of MWA?

Lee: I joined when Neil Robinette was president and we were meeting at the Roseville Salvation Army Center. I had been shopping at Rockler's and met Steve Mages and Bob Puetz doing a demo. They spent some time talking with me and that was the first I had heard about the MWA. I joined the club about a year and a half later.



Lee's first bowl made from glued up boards

Continued on next page

MWA: When did you become president and why did you agree to do that?

Lee Luebke Profile

Lee: I became president in 2019 and am in my first year of my 2nd term. I became president because some people really twisted my arm. I think Janese Evans was the ringleader of the group that includes a few of the officers.



When Pres. Luebke appears on MWA Zoom meetings, he looks like he might be at a desk in a paneled office, but . . .



. . . In fact, he's using his Shopsmith as a desk and sitting in his shop.



MWA: The president's job seems to have many responsibilities. What is the best part of being president?

Lee: It's working with the people in the MWA, for sure. The group is a dedicated and hard-working bunch of people with an excellent Board and good volunteers. And we always need more volunteers! There are so many things always going on that most members don't even know about, like insurance on all our equipment. That's going to be a major topic at the next Board meeting.

MWA: What is the most difficult part of being president?

Lee: Well, it's really handling the insurance issues, figuring out how much insurance we need, making sure we have the right liability insurance, getting all the records of what we do with the insurance decisions and other things adequately documented, filed and readily available to officers in the future. Reid Zimmerman, Mark Debe and Janese Evens are really very helpful in these and other matters that come before the Board.

Continued on next page



MWA: Where and how big is your shop?

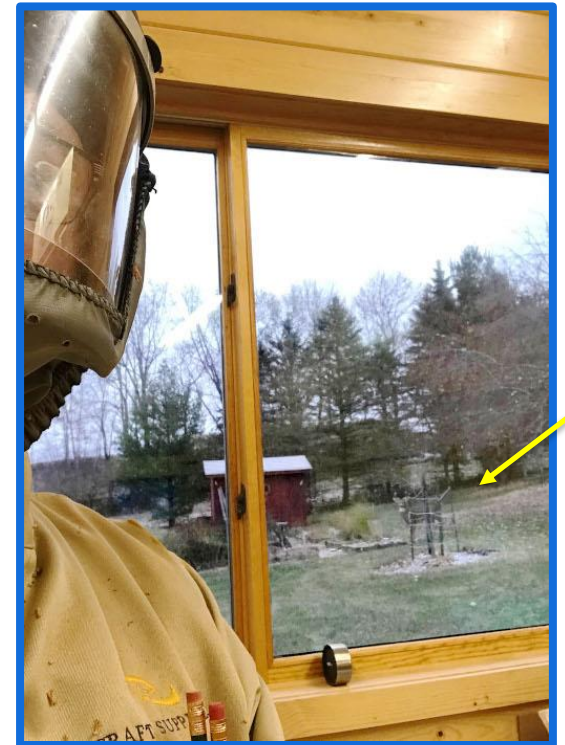
Lee: My shop started in my 2-car garage. I used about a stall and a half. It was not heated; I used a kerosene heater to try to cut the cold somewhat in the winter. I looked into adding on to the garage for more shop space. The City Planner looked at the plans and the property lines, etc. and said I couldn't do it because it would be too close to the property line, but I could apply for a variance. All of the surveying, write-ups, applications would cost \$5000 and it would just be a request with no assurance I would get the variance. So, I decided to build the shop as a free-standing building down the hill a ways, on the open space on the property.



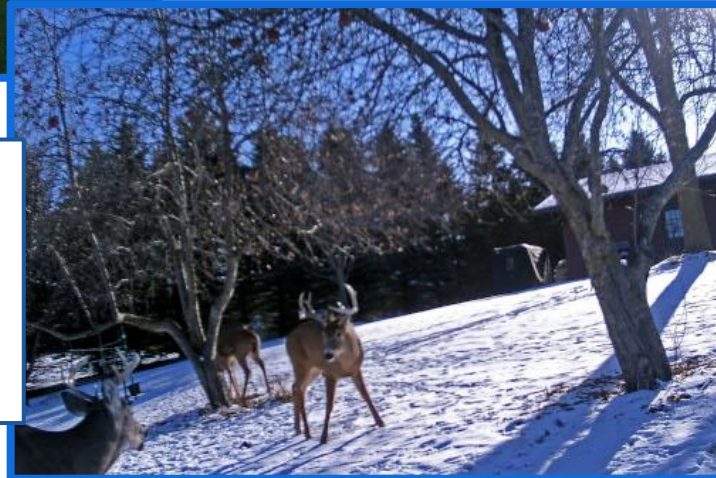
Lee: I built this free-standing building 8 years ago. A friend of mine did the structural construction. My brothers and some hired help did the siding, windows, doors and finished the construction. I did the wiring and the insulation, the paneling and the counters, cabinets and built ins. It is totally insulated and even without the heat on it never gets below 32 degrees. I had the shop air-conditioned – I wouldn't work without air-conditioning. It's nice being away from the house; deer come right up to the shop to get the apples.



While working in his shop, a buck comes to inspect the garden (arrow)



Looking out his shop window, Lee sees a group of bucks. The tent-like object near the back of his house is his blind for bow-hunting.





Lee loves his new Laguna bandsaw



Half the shop building is a garage, which includes wood storage



This trailer gets a lot of use for MWA wood raffles, etc.

Wood on wheels. Lee built the cart and rack from left over 2x6s from the shop construction.



MWA: What kind of lathe do you have?



Lee: I have a Laguna REVO 1836, which I've had for 3 years, and a Shopsmith I bought when I first started turning seriously. I bought it used and upgraded it. I put a new, more powerful motor that will run on 220 and has more power and more torque. Now that I have the Laguna, I use the Shopsmith for turning small things, the bandsaw, Beall buffering system and the table saw. It was easy to change it to 220, I just had to change the cord plug because the motor was made to run on either voltage. I really enjoy the big Laguna.

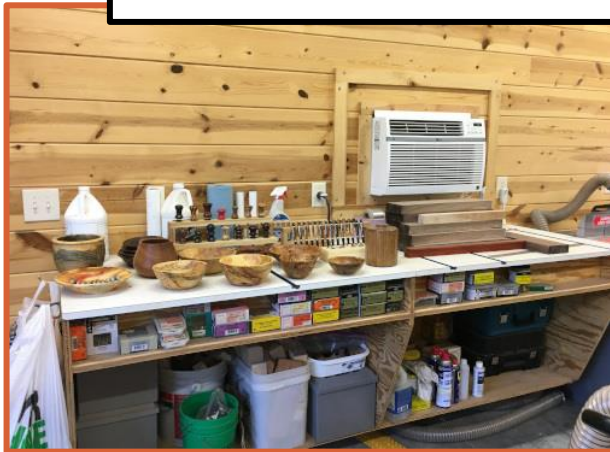


New Shopsmith motor

MWA: What is your favorite type of turning?

Lee Luebke Profile

Lee: My favorite turning is bowls and platters. I generally go back and forth. I sort of blend Dick Hicks' bowl and platter designs and come up with a hybrid style. I also do pens and rings. I recently did the club demo for rings. When we were doing a calabash design bowl, a big chunk came out and I just redesigned it. I've also been successful making and selling Ulu knives with a cutting board.



The shop is hard-wired; no wi-fi





Ulu cutting boards and knives

Lee Luebke Profile

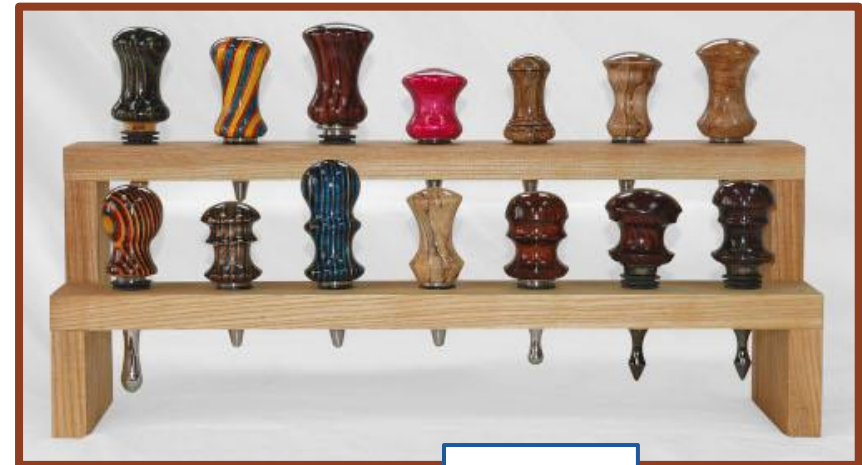


MWA: What is greatest challenge in turning?

Lee: Getting over bad habits! I learn new, better, safer techniques . . . and then I slip back into the old bad habits!



Burl bowl with natural rim



Stoppers

MWA: What type of wood do you prefer, wet or dry?

Lee: I like the wood to be a little more dry than wet – I like it when the moisture meter reading is about 18%. Then I can turn it and finish it at one time, which I really prefer.

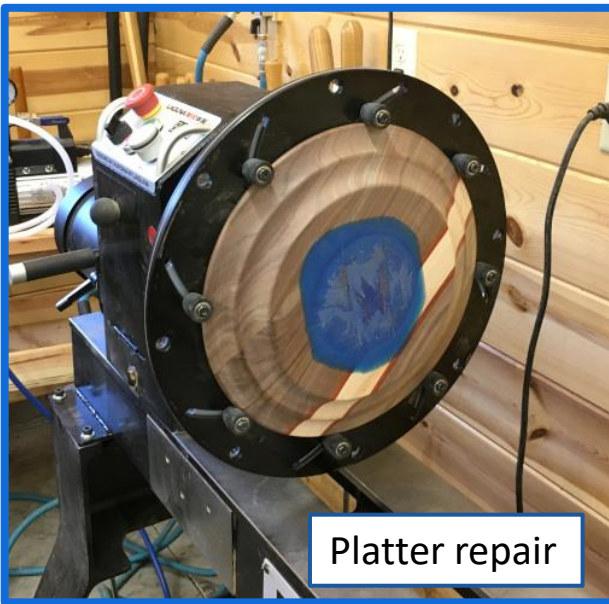
MWA: What's your favorite species?

Lee: My 2 favorites are walnut & cherry. I've got some black cherry that I haven't turned yet – it's still a little too wet, but I'm looking forward to it. Oh, in prepping the wood for the lathe, I am really enjoying the Laguna band saw!



MWA: Do you have some favorite pieces that you wouldn't give away or sell?

Lee: Of, course- ANYTHING MY WIFE WANTS TO KEEP! I sell things at the Craft Fairs at Methodist Hospital and our church's craft fairs.



Platter repair



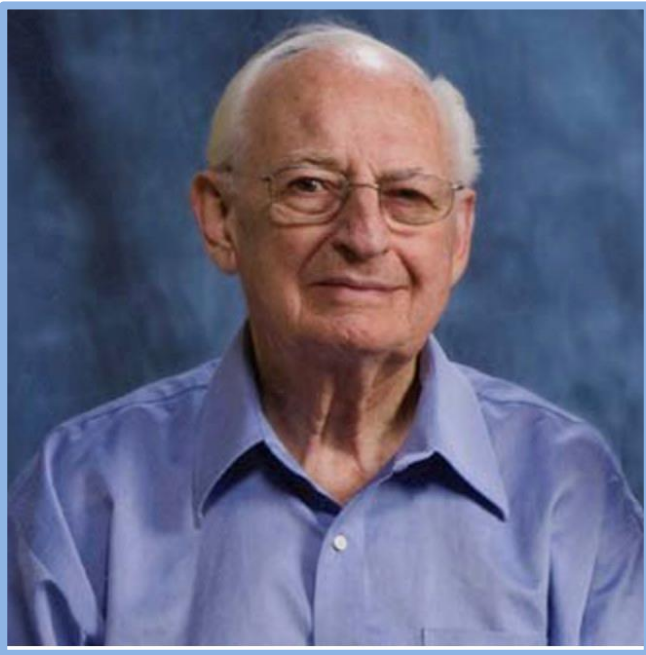
Thickness planer & platter blanks

MWA: Like a very large percentage of our members, you're retired. What did you do for a living?

Lee: I worked in the printing trade, for Professional Litho; I think they're now Studio 8. I was one of their experts on PhotoShop, color separation retouching, and I was the **Mac** IT guy. Late in my career I was certified in the G-7 printing standard, which replaced SWAP color standards. The **G7** Method is a printing procedure used for visually accurate color reproduction by putting emphasis on matching grayscale colorimetric measurements between processes.

MWA: You worked part-time for Rockler; how long did you do that and was that an interesting job?

Lee: I worked part time at Rockler for 3 years. It was SALES SALES SALES. I enjoyed talking to the customers and especially when I could talk about turning, which was my store specialty. Helping people was fun and especially helping turners. I was able to do some pen turning and bowl turning classes. You know, Rockler is a national company.



Lee: Norton “Nordy” Rockler passed away on December 28, 2020, at the age of 98. He founded Minnesota Woodworkers Supply Company in 1954 as a mail order business, which later became The Woodworker’s Store with the opening of the first retail store in 1977. In 1996, the company was renamed Rockler Woodworking and Hardware and has since expanded nationally and internationally.



The ring above his finger is the one he did for the club demo in May



Calabash bowl



The reason he needs the tractor/mower

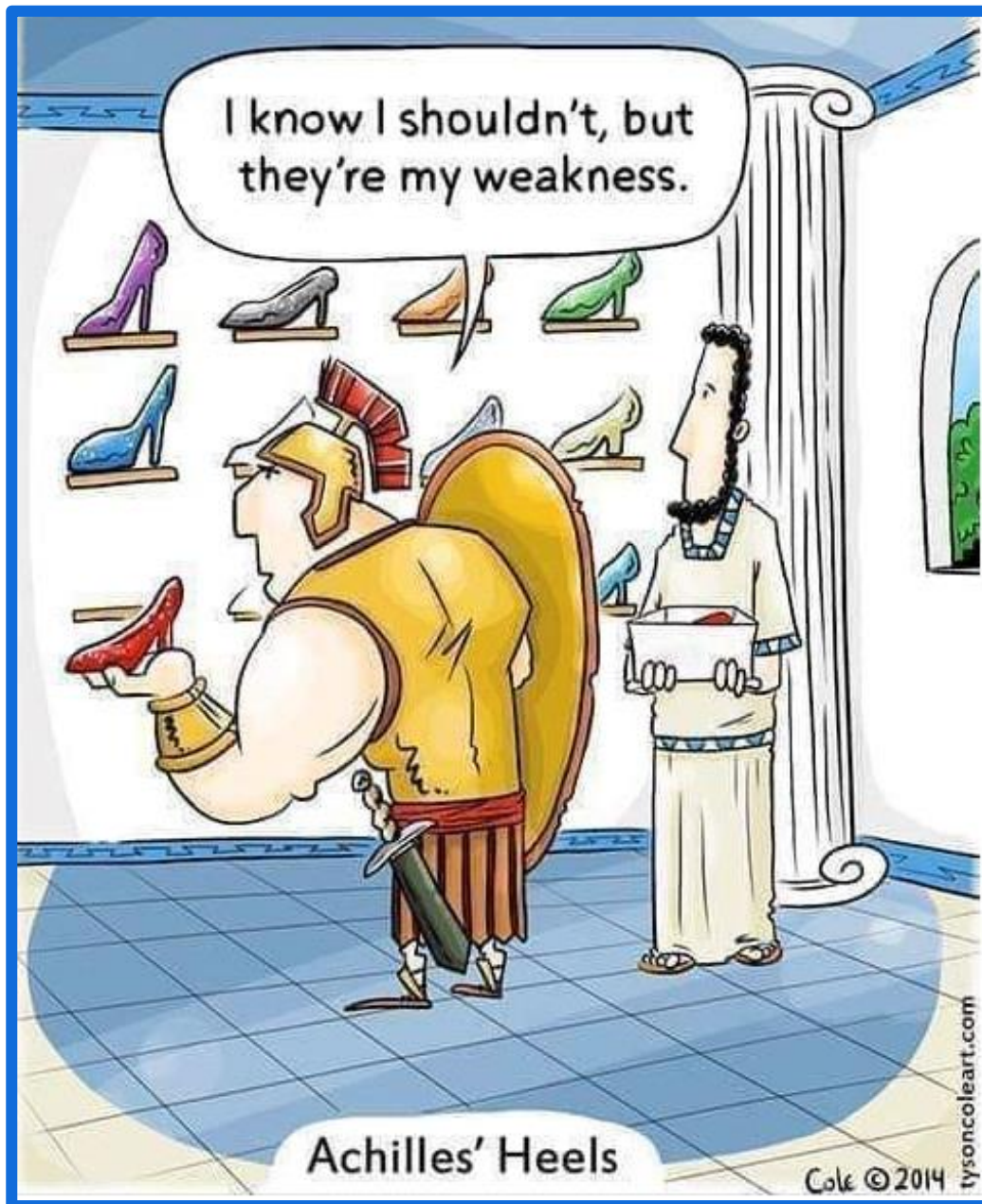


MWA: What do you spend your leisure time on besides woodturning?

Lee: Besides turning (not as much as I'd like) I do lots of yard work and the president's duties take up a lot of time. I have always done a lot of wildlife photography. I also enjoy bow hunting. I've even had a deer blind in my back yard.



MWA: Thanks so much, Lee, for your hospitality and the insights into your turning journey. We appreciate all the time you put in as president.





MWA June Demo

June 5
Andrew Hall
"Blues Bowl"



Andrew Hall did a remote demo from England. Andrew is professional turner and is famous for turning cowboy hats (on the shelf in the back right of the picture). He demonstrated making a blues guitar.





MWA June Demo

Andrew Hall Woodturning IRD

Minnesota Woodturners Association



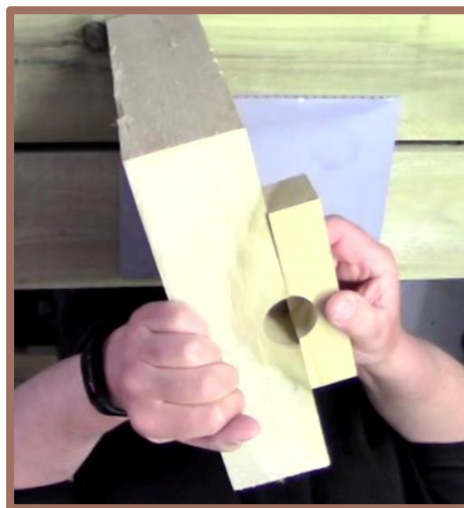
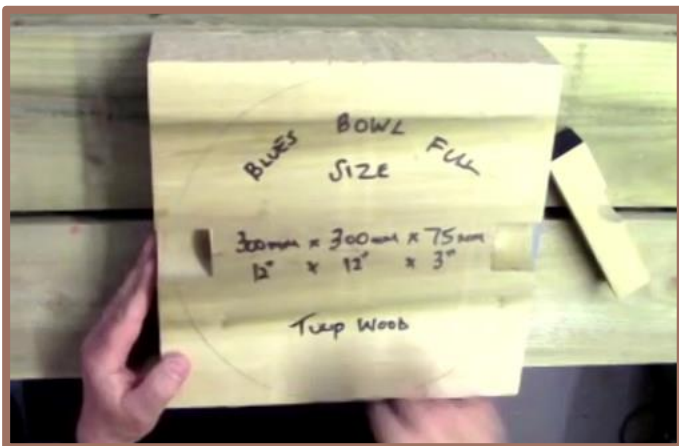
Andrew Hall Woodturning IRD

Minnesota Woodturners Association





MWA June Demo (cont'd)



Making the bowl or base of the guitar



Various sizes of guitars can be made by varying the length of the neck





MWA June Demo (cont'd)



The neck is partially completed



The wooden parts of the guitar are completed



Andrew playing the completed "blues bowl"





MWA June Demo (cont'd)



Dan Larson shows the "blues bowl" he made. Dan took a 3-session class with Andrew.



Dan and Andrew played a blues duet on their guitars



Instant Gallery

Dan Larson



Dan took the 3-part class from Andrew Hall and made this Blues Bowl



Instant Gallery

Jay Schulz



No finish



Mahoney's
oil finish



The umeke style box is modeled on the demo from Cindy Drozda's intro to boxes class. It is 3" high and 2.5" in diameter.

Instant Gallery

Mike Rohrer



Walnut 3 1/4" x 2 3/4" Osmo finish



Walnut 5 1/2" x 2 3/4" Osmo finish



Walnut 6" x 3" Osmo finish



Instant Gallery

Mike Rohrer



Locust 6 ½" x 3", Osmo finish

These locust bowls were turned very fresh and I like the warpage



Locust 6 ¾" x 2 ¾", clear shellac



Instant Gallery

Mike Rohrer



Cherry repaired with coffee



x



Instant Gallery

Mike Hunter



This koa calabash bowl is a collaborative with Bob Meyer. It is 9 ½ " x 4 ½ " and is finished with diluted sanding sealer followed by sanding wax.



Instant Gallery

Paul Laes



I cut a log from a downed palm tree about 3 years ago and tried to turn a bowl from it on June 16. It was a very dusty item to turn and would not stay round when turning. The sides are collapsing in on themselves and I could not sand it. I would not turn it again.



Instant Gallery

Steve Miller



93 Cattails: walnut, cherry, maple, catalpa, apple, Russian olive, red cedar; a nice mix of colors. A low-cost item, but 3, 5 or more will be purchased at a time. Sometimes the customers buy a bud vase for arranging. I usually dip them in 2 or 3 coats of Danish oil.



Instant Gallery

Steve Miller



Shows are on again this year, so I wanted to do some unusual shapes, have a variety of live edges, natural edges, smooth edges and nested sets already finished. Some people like different shapes: maple burl, white oak that was next to a burl, and some NE Russian olive.





Vase on the left 18" tall, sealed maple and walnut;
vase on the right is 20" tall, birch and padauk



After having a birdhouse "opened up" by woodpeckers, I began gluing 1" steel washers to the opening. It hurts to see a bird's IQ is higher than mine!

Hands-On-Demo

In past years, pre COVID, the club had a program called **Hands On Demos**. Many of you recall these "classes" during which we turners got together at someone's shop to learn or refresh skills. Jim Jacobs held many skew classes, I did a number of flute making demos and others offered various interesting topics. I want to restart this program (at least once) and since there has been an interest expressed to me about how I set up and make rings from boards to create bowls and vases, I am offering to hold a **Hands on Demo** on just this subject. Just to be clear, this class is not a sanctioned event of the club. It is just me offering to do this. Here are the details.

1. Demo(s) to be held at my shop in August on a Saturday TBD. Most likely the 2nd and/or the 3rd Saturday(s) of August. If needed, I may offer more than 1 if there is enough interest.
2. A limit of 4 participants
3. Request that all be vaccinated
4. Participants will supply their own materials. I will get a list ready. Basically, some boards 4 to 8 inches wide and 12 to 14 inches long, 3/4 to 1.5 inches thick. Think 2 x 6 or 2 x 8 pine boards.
5. Your own eye protection
6. Hot glue gun

In the class, I will show you how to layout and cut rings for both bowls and vases. You will cut the rings on the bandsaw so you can transfer the lesson to your own shop. The class is not for making a final piece. It is for learning how to set it all up. You will also see how I have designed my adjustable sled.

Plan for about 2 hours.

If you are interested, please email me at:

charlieprokop@gmail.com





Ellsworth Caliper

Mike Rohrer

David Ellsworth advocates making your own thickness caliper, which can be adjusted and modified to fit most any situation and is especially good for hollow forms. This is a “subtractive” caliper; you set the distance between the tips at a known distance then measure or estimate the distance between the wood and the tip outside the piece and that equals the thickness at that point. The caliper can be bent so that the tips are aiming directly at each other no matter what area of the piece is being measured.



Ellsworth Caliper (cont'd)

Mike Rohrer



You need to start with a coated steel rod 3ft x 3/16"



Cut the rod to about 29" – 30"



Round the ends



Start bending just a bit at a time to make a gentle circle



Getting it close to round



Ellsworth Caliper (cont'd)

Mike Rohrer



Ready to go!

1/2" spacing is a good place to start

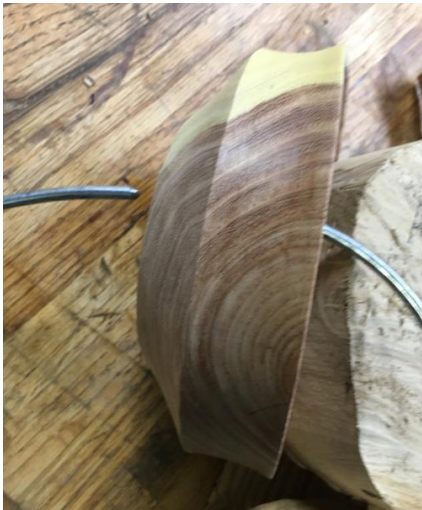


In whatever configuration the caliper is in, the tips must be aligned exactly point to point



Ellsworth Caliper (cont'd)

Mike Rohrer



The bottom of this bowl is $\frac{1}{4}$ " thick



The tips are aligned



It is easy to estimate
the thickness

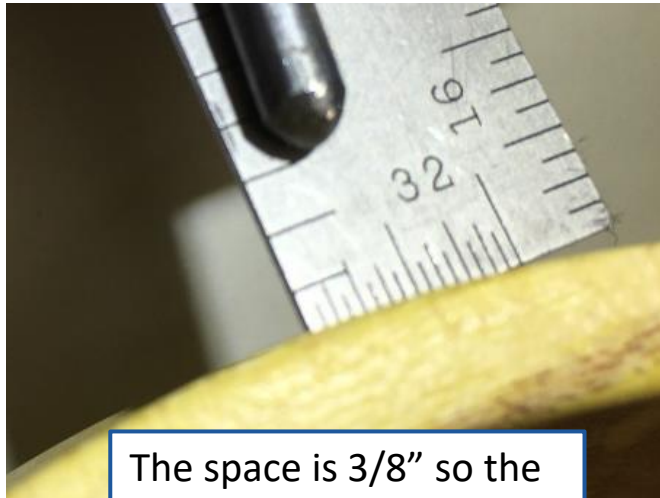


The bottom of this
hollow form is $\frac{1}{4}$ "



Ellsworth Caliper (cont'd)

Mike Rohrer



The space is $\frac{3}{8}$ " so the wall thickness is $\frac{1}{8}$ "



The wall thickness of this hollow form would be hard to measure with regular calipers, but you can bend and configure the Ellsworth caliper so it will fit in the opening and be oriented for a correct measurement



For thicker or thinner bowls, the caliper can be set to a larger or smaller starting gap



Ellsworth Caliper (cont'd)

Mike Rohrer



This hollow form by Alan Lacer shows $7/16''$ so starting with a $1/2''$ space, by subtractive measure the wall thickness is $1/16''$. I knew it was thin.



Two of the greatest qualities
to have in life are:



**PATIENCE
and WISDOM**

Ask A Turner

Q. I'm trying to learn how to prevent freshly cut wood from splitting while I'm preparing it for turning. Should I split the logs lengthwise? What should I do about sealing the ends and the sides? How can I keep the wood from splitting while it dries?

A. by Dan Larson

I approach this in a very practical manner. Smaller logs that I can lift and stack easily, I leave as a full log. If I am able to leave some extra length vs diameter, i.e. 2" longer on each end, 14" long on a 10" diameter log, then I will stack the log without sealing the ends. This allows some of the free water to escape before sealing the ends. The problem with this is that you get busy and forget to monitor the release of the moisture and some cracking will occur. When this starts you can seal the log. On larger logs that are too heavy to move, I will split these in half immediately and, to save weight, I will only leave an inch or so extra in length, but then you must seal at least the ends.

Some people will also seal the bare wood exposed to slow the moisture release. When splitting the log in half, it is important to try to hit the pith on both ends as one can experience splitting from the pith on half of the log and no splitting on the half that was cut away from the pith. This is not a huge problem since you must move away from the pith and some cracking anyway when you define the rim. I have had cases where the pith has been left in on one end and cracking starts after time. Then before I put it on the lathe, I will do a chain saw cut down parallel to the original cut line that I used to initially split the log but move it over about 2" to remove this cracking.



This makes for a shallower bowl but if a crack is present in your bowl blank it will continue to migrate in and continue to crack your finished bowl. Another thing that happens is when the pith is not in the middle, as in the case of a large branch, there may be internal stress that can be released as you make and dry the bowl. If the pith is kept in the middle, you can get a balanced bowl that will oval out evenly, but if you cut through the pith so it is not in the center, as you make and dry the bowl, it will move and warp in an uneven manner.

This may be a problem depending on the taste of the end user. Myself, I like the natural movement of the green wood and I like a bowl that moves and warps. Then when the customer holds it and looks at it, they know it was not made in China on a machine. It looks and feels hand crafted.

Green wood, start to finish is my thing, but it is not for everyone. Lately I have been getting some very large logs that I must cut in half. I reduce the weight as much as I can with the chain saw and use a 2-wheeler to get it near my shop. Then I must get some help, either getting it onto the bandsaw, or onto the lathe for a faceplate.



Ultimately, I need help mounting it on the lathe or I use 2x4's to lever the blank into position. Once I get the first bowl cut and cored, I can handle the other bowls that the log will yield. Nested bowl sets are the result.

Luckily, "Wood does grow on trees" and if a bowl cracks there is always another piece of wood waiting for you to practice your skills.

Regarding the use of wax and paper, etc. I think this is too much hassle with no real benefit. If I am too lazy to seal the ends, sometimes I will stand the log on end into the ground - sealing that end - then put another wet log on top to cap that end. If you place the split cut side on the log so the bark is up, that exposes the two ends of this second log so it would be easy to seal that upper log.

There are lots of ways to store & age the wood. Everyone must make their own way to the promised land.



ANNOUNCEMENTS

Hamburger Club meeting

Let's stick our toe in the water and schedule a Hamburger Club luncheon on July 15, 2021. A request is for the attendees to be **fully vaccinated**. Several members have suggested we move to a more central location. After one of the wood exchange meetings, we met at Big Louie's for lunch, which was well received. The July luncheon will be scheduled at:

Big Louie's Bar and Grill
790 County Road D W
New Brighton, MN 55112
651-636-2901

This is basically the Northwest corner of Highway 88 and County Road D. The entrance is just south of McDonalds.

As we have done in the past ... let's meet at 11:30 am with lunch to be ordered about 11:45 am. Feel free to invite additional woodturners. No topics ... just an open dialogue of woodturning friends.

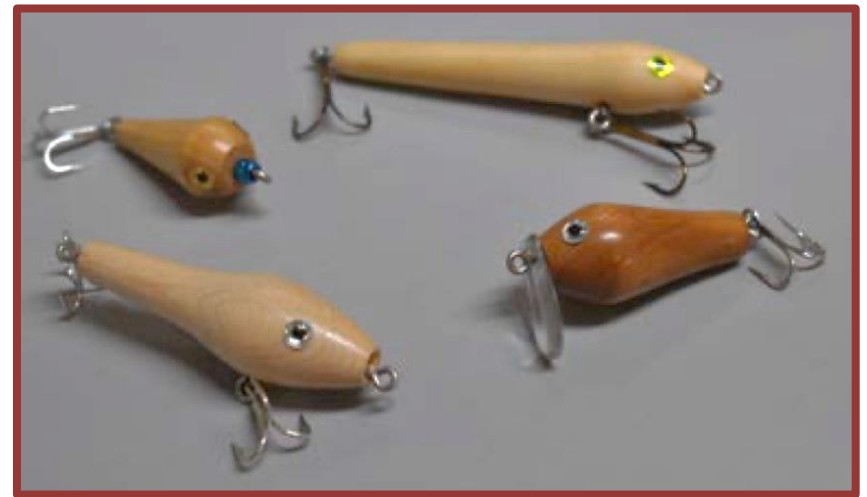


ANNOUNCEMENTS (cont'd)

Mark Palma Article

Mark Palma has an article in the AAW newsletter, a reprint of an article from the March 2015 issue of Turning FUNdamentals, "Turning Fishing Lures."

<https://higherlogicdownload.s3-external-1.amazonaws.com/WOODTURNER/WF0402p8-16.pdf?AWSAccessKeyId=AKIAVRDO7IEREB57R7MT&Expires=1622832244&Signature=2ceBZBpRMV VcvMYW2nInjoxYAHc%3D>



WHATEVER MAN MAKES

Whatever man makes and makes it live
lives because of the life put into it.

A yard of India muslin is alive with Hindu life.

And a Navajo woman, weaving her rug in the pattern of her dream
must run the pattern out in a little break at the end
so that her soul can come out, back to her.

But in the odd pattern, like snake-marks on the sand
it leaves its trail.

D.H. Lawrence

This definitely applies to our woodturning creations



Monthly Challenge



New 2021 Monthly Meeting Challenge.

We are going to start up the monthly challenge.

The challenge will start in February and sponsored by Woodcraft. We will have some \$10.00 Woodcraft gift cards to give out through a random drawing giving all an equal chance to win. Number of cards to be determined.

To be included in the gift card drawing, pictures and description should be submitted via email to Mike Rohrer mdrprof@gmail.com *once finished but no later than one week before the Monthly Meeting date.* All have an equal chance at winning a gift card.

The Monthly Challenge for July was “Turn something cut and put back together”



June Monthly Challenge –
“Turn something cut and put back together”

John Campbell



This is a dead blow mallet. It is maple finished with beeswax and linseed oil. I cut the end off and drilled a 1 ¼" inch hole down the center. The hole is filled with steel BBs. I turned a plug from the cut off end and epoxied it back on. The overall diameter is about 2 5/8" inches. The length is 14 ¾". The sweet area between the lines is five inches.

June Monthly Challenge – “Turn something cut and put back together”

Mike Rohrer



Oak block with waste
wood in the center



The block is turned
into an end grain box
and the center third
is cut out and discarded



This is a “lost wood” box, *ala* Art Lietsman.
It is 4 $\frac{3}{4}$ ” tall, by 4” by 2 $\frac{3}{4}$ ”



June Monthly Challenge –
“Turn something cut and put back together”

Duane Heng



This vase was made by cutting the blank apart three times. First it was cut at 45 degrees. The second cut was at the opposite 45 degrees and the third cut was made at 90 degrees. I think the woods are cherry and maple. I used Mahoney's Utility Finish and Oil Wax Finish.

August Monthly Challenge

Submit your entries for the August
Monthly Challenge
“Turn Something for the Kitchen”

Submit your entries for the August Challenge during
July! Send them to mdrprof@gmail.com

Remember, you may submit more than 1 entry so we may
enjoy your turnings, but your name will only be entered in
the drawing once, giving everyone an equal chance to win.



This sculpture is called
"Politicians Discussing Global Warming"



As I'm finishing putting the newsletter together, the Northwest US is suffering the 2nd day of the highest temperatures in recorded history.

Are you interested in doing COMMISSION/CONTRACT TURNING?

Contact Pres. Lee Luebke at lguebke@comcast.net
and give him the following information:

- Your name and location
- Your interest in spindles, bowls, or any general or specific area of turning
- Your email address for additional contact information

The club is getting inquiries.
Rockler & Woodcraft will use this list for their inquiries also.





WOOD SEALER

At this time sealer is available from:

Lee Luebke, Corcoran MN, lguebke@comcast.net

Julie Abbott, Eden Prairie MN, JulieAbbott@EdinaRealty.com

Bob Meyer, Lino Lakes MN, rjmbobco@comcast.net

Steve Mages, Minnetonka, smages@juno.com

Paul Laes, Cottage Grove, Woodforfun@hotmail.com

I am looking for others to sell sealer throughout the metro area.

Bring plastic jugs if you have them.

Sealer \$10.00 gallon.



We need heavy duty plastic jugs for dispensing sealer.

If you have any gallon containers, we could sure use them. It would be best if you could bring your empty containers to be filled.

The club now has a chip card reader so you can pay Lee Luebke by credit card or cash. Each gallon is still \$10.

Anyone wanting to sell sealer can buy a quantity from me if you like or take some gallons and sell them to members and send the money to Treasurer Mark Debe.

Lee Luebke, President MWA, 612-419-8743





The MWA does not sponsor or endorse this announcement. It is presented simply as an announcement of possible interest to members.

LIQUIDATION OF EXCEPTIONAL WOOD COLLECTION

I am having a liquidation sale at Wood Carvers Store & School, of my wood collection that I have acquired over the decades, both domestic and exotics from around the world. It includes the collection of Master woodcarver and woodworker, Chris Effrem. Much of the wide collection is best used for woodturning.

Our exotics include Beefwood, Boxwood, Bocote, Coffee, Camphor, Fig, AZ Ironwood, Imbuia, Myrtle, Lignum Vitae, Lemonwood, Sumac, Indian Rosewood, Yellow wood, Yew wood, as well as burl wood. We have a large Black Ash burl log and other logs available at bargain prices. We also have many domestic pieces or logs to offer. We have pieces from miniature work to larger scale to offer you.

The sale is at Wood Carvers Store & School, 2649 Louisiana Ave So., St. Louis Park. Open from 1:00 pm to 5:30 pm weekdays or by appointment. Call (952)303-5443. George Effrem.

The sale will go on until the end of December.

www.woodcarversstore.com I also have antique hand tools, including wood planes.

George Effrem - woodcarv88@gmail.com



Gathering Wood for the MWA

Mike Hunter



Dan Larson and Lee Luebke

My son, Thad Hunter, has a commercial property in St. Anthony Village. Ironically, this is where a couple of wood exchanges have been held. *Ed. note: The sky is gorgeous!*



Please send items for the Bulletin Board to: mdrprof@gmail.com

As a group which cannot meet in person, we'd like to keep up with our friends and hear about awards, shows, family news (weddings, accomplishments of children and grandchildren), retirements, hospital stays, illnesses, book recommendations, website recommendations and anything else you would normally talk about in person at MWA or Sub-Group meetings. All of these and more are possibilities for the Bulletin Board. We're not seeing our MWA friends face-to-face, but we still need to stay in touch.



New Members June 2021

Welcome all new members and we all look forward to getting together face to face as soon as we can.

Michael Beede

David Reilly

Rich Smith

James Broom Schweitzer

David Socha

Bob Clague

Dominique Brewer

Coon Rapids

Eden Prairie

Apple Valley

Robbinsdale

Nisswa

Minnetonka

Inver Grove Heights



**I finally realized it!
People are
prisoners of their
phones. That's
why they are
called cell phones!**



Lathe Contact List

The MWA Newsletter is presenting a list of members who would be happy to give you pros & cons and experiences with the lathes they own or with which they have had experience. This list is being updated every week as more members are contacting me saying they'd be happy to be listed. If you would be willing to have your name and email address listed under the type of lathe(s) you have, please contact me .

| LATHE | Member | Email address |
|---|------------------|--|
| Bonnie Klein Mini 12x18 | Linda Ferber | lindajaneferber@gmail.com |
| Craftsman Professional | Steve Mages | smages@juno.com |
| Delta mid size 12" | Randall Thompson | thomp013@umn.edu |
| Delta mid size 12" | Dan Larson | dhjlar@comcast.net |
| Delta midi | Bob Meyer | rjmbobco@comcast.net |
| Delta midi | Joe Zwirn | joezathome@msn.com |
| Grizzley G 0733 | Martin Young | martin.clay.young@gmail.com |
| Harbor Freight(Central Machinery 10x18) | Rusty Ogren | rick.Ogren@consolidated.com |
| Jet 1015 | James Zangl | james.zangl@gmail.com |
| Jet 12/21 | Lee Luebke | lguebke@comcast.net |
| Jet 14x42 | Rusty Ogren | Rick.Ogren@consolidated.com |
| Jet 1640 | Joe Zwirn | joezathome@msn.com |
| Jet 1642 EVS | Jenny Trice | jennytrice@aol.com |
| Jet 1642 1.5 hp | Greg Just | woodturner07@gmail.com |
| Jet JML 10/14 Mini | Neil Robinette | northsideturners41@gmail.com |
| Jet JWL - 1220VS | John Campbell | campbell.jn@gmail.com |

Continued on next page



Lathe Contact List (cont'd)

| | | |
|------------------------|-----------------|--|
| Laguna 12/16 | Lee Luebke | lguebke@comcast.net |
| Laguna 18/36 | Jay Schulz | jfschulz@comcast.net |
| Laguna 18/36 | Dan Larson | dhilar@comcast.net |
| Laguna 18/36 | Lee Luebke | lguebke@comcast.net |
| Laguna 18/36 | Mike Lucido | mike.s.lucido@gmail.com |
| Laguna Revo 18/36 220v | John Campbell | campbell.jn@gmail.com |
| Laguna Revo 18/36 220v | Neil Robinette | northsideturners41@gmail.com |
| NOVA 3000 | James Zangl | james.zangl@gmail.com |
| Nova Comet II | Rolf Krogstad | rolf.krogstad@gmail.com |
| Nova Comet II | Mike Anderson | manderson4700@comcast.net |
| NOVA DVR 16" | Dan Larson | dhilar@comcast.net |
| NOVA DVR 16" | Joe Zwirn | joezathome@msn.com |
| NOVA DVR XP | Bill Szydlo | szydlo.bill@gmail.com |
| NOVA DVR XP 16" | Chuck Shreffler | cshreffler@outlook.com |
| Oneway 2036 | Dick Zawacki | dickzawacki@gmail.com |
| Powermatic 2014 | Steve Legvold | stevelegvold@gmail.com |
| Powermatic 2520B | Steve Mages | smages@juno.com |
| Powermatic 3520B | Todd Williams | toddwilli@comcast.net |
| Powermatic 3520B | Steve McLoon | s.c.mcloon@gmail.com |
| Powermatic 3520C | Reid zimmerman | reidazimmerman@gmail.com |
| Powermatic 3520C | Dan Ernst | piloto1@comcast.net |
| Powermatic 4224B | Dan Larson | dhilar@comcast.net |
| Powermatic 45 | Todd Williams | toddwilli@comcast.net |
| Robust American Beauty | Tim Dodds | tbikefast@aol.com |
| Robust Liberty | Jim Jacobs | woodmanmn@aol.com |
| Robust Liberty | Warren Gerber | xlwalleye@gmail.com |
| Robust Sweet 16 | Linda Ferber | lindajaneferber@gmail.com |
| Robust Sweet 16 | Bob Meyer | rimbobco@comcast.net |
| Shopsmith | Martin Young | martin.clay.young@gmail.com |
| Shopsmith (restored) | Lee Luebke | lguebke@comcast.net |
| Vega 2600 | Bill Szydlo | szydlo.bill@gmail.com |
| Vicmarc VL 300 | Lee Tourtelotte | leetourtelotte@icloud.com |



Member Help Line

The club has organized a "Member Help Line", the purpose of which is to answer questions/give advice and help educate our membership. Even though it is more difficult during the Covid-19 social distancing time to help people in home workshops, there are still ways to help each other with woodturning questions/problems. The volunteers can help via email, telephone, Zoom, some personal contact using social distancing and masks, and probably other ways we haven't tried yet.

Maybe you're a beginner looking for advice on what to buy.

Maybe you have questions on chucking.

Maybe you have sharpening questions.

The volunteers listed on the next page are more than happy to help. Some have listed areas in which they feel more comfortable, but all will help with your woodturning question.

We would like more members to volunteer for our Member Help Line. If you would like to be "on call" please contact Mike Rohrer at mdrprof@gmail.com with your phone #, email address, area where you live, areas you'd be willing to help with, and your name will be added to the list.

Continued on next page



Member Help Line

| | | | | |
|-----------------|-------------------|--|--|-----------------------|
| Mike Rohrer | 612-276-9556 | mdrprof@gmail.com | bowls, boxes | South Mpls |
| Steve Miller | 715 821-8726 | ssmiller920@gmail.com | all types, light on segmenting | River Falls, WI |
| Lee Tourtelotte | 612-670-1874 | leetourtelotte@icloud.com | all types, beginner, advanced | South Mpls |
| Warren Gerber | 651 403 2883 | xlwalleye@gmail.com | Bowls | Mendota Heights |
| Jim Jacobs | 651-497-1309 | woodmanmn@aol.com | beginner/advanced, segmenting, skews | Hastings |
| Dick Zawacki | 507-744-5748 | dickzawacki@gmail.com | general, bowls, wood carving | Northfield |
| Mike Lucido | 651-738-2551 | mike.s.lucido@gmail.com | general woodturning | Woodbury |
| Bill Campbell | 715-338-2634 | wm.e.campbell@uwrf.edu | general woodturning | River Falls, WI |
| Mark Kelliher | 651-636-8678 | markandkathy007@comcast.net | general woodturning | Arden Hills |
| Todd Williams | 651-274-4658 | toddwilli@comcast.net | general woodturning | Lake Elmo |
| Bob Meyer | 651-483-6187 | rjmbobco@comcast.net | bowls, ornaments, sharpening, gen'l. | Lino Lakes |
| Dick Hicks | | rbhicks@rbhicks.com | platters, spindle work, bowls | Zoom from shop |
| Steve Mages | 952-544-5286 | smages@juno.com | general woodturning | Minnetonka |
| Neil Robinette | 763-639-1085 | northsideturners1@gmail.com | sharpening, tool control, turning vs budget | Brooklyn Park |
| Andy Levesque | 651-769-4070 TEXT | andy.m.levesque@gmail.com | resin/epoxy casting, hybrid turning, vacuum stabilizing, CNC & laser engraving | Lindstrom |
| Rusty Ogren | 612-990-4857 | rustywoodsart@gmail.com | resin questions, crack filling | Plymouth |
| Dan Ernst | 651-280-7484 | pilot01@comcast.com | coring, wing bowls, bowls, gen'l turning | Maplewood, St Paul |
| Bill Szydlo | 651-206-5547 | szydlo.bill@gmail.com | segmenting, sharpening, gen'l turning | Northfield, MN |
| James Zangl | 6541-645-4696 | james.zangl@gmail.com | bowls, hollow forms, vases, pens, etc | St Paul -Hamline area |
| Joe Zwirn | 612-619-4793 | joezathome@msn.com | segmenting, general woodturning | Brooklyn Center |
| Mark Palma | 612-991-7733 | marksworkshop@gmail.com | finishing & color | Lanesboro |



MWA Demonstrations Since July 2017

| <u>Newsletter</u> | <u>Demo</u> | <u>Demonstrator</u> |
|-------------------|---|-------------------------|
| July 2017 | Hollowing for Embellishment | Gary Mrozek |
| Aug 2017 | Turning & Decorating a Platter | Jeff Luedloff |
| Sep 2017 | Bowl Coring | Neil Robinette |
| Oct 2017 | Traditional Platter, Viking Bowl | Glenn Lucas |
| Oct 2017 | Natural Edge Bowl | Bob Meyer |
| Nov 2017 | From Tree to Bowl | Dan Larson |
| Dec 2017 | Turning Ornaments | Jim Jacobs |
| Jan 2018 | Making a Pendant | Alan & Lauren Zenreich |
| Feb 2018 | Spindle Turning/Milk Paint | Linda Ferber |
| Mar 2018 | Chain Saw Safety & Techniques | Steve Hagen |
| Apr 2018 | Lidded Boxes | Steve McLoon |
| May 2018 | Hollow Forms & Platters Platters & Bowls | Trent Bosch |
| June 2018 | Travel Mug | Mike Mahoney |
| July 2018 | Log Preparation & Sawmill | Greg Just |
| Aug 2018 | Squarish Platter | John Enstrom |
| Sep 2018 | Pens | Mike Hunter |
| Oct 2018 | Safe & Comfortable Turning | Ed Mielech & Rick Auge |
| Nov 2018 | Finishing | Eric Lofstrom |
| Dec 2018 | Finials | Mark Palma |
| | Lefse Sticks | Steve McLoon |
| | A Shop | Jim Jacobs |
| | Handles | Todd Williams |
| Jan 2019 | Scandinavian Inspired Bowls | Tim Heil |
| Feb 2019 | Segmented Turning | Dan Larson |
| Mar 2019 | Peppermills | Curt Theobold |
| Apr 2019 | 3-Legged Stool | Tom Sciple |
| May 2019 | Baby Rattle with Captive Rings | Keith Gotschall |
| June 2019 | Spheres & Embellishments | Gary Mrozek |
| July 2019 | Wood-Mizer Portable Sawmill | Steve McLoon |
| Aug 2019 | Finial Box | John Enstrom |
| Sep 2019 | Spalting | Cindy Drozda |
| Oct 2019 | Rings True to Life | Seri Robinson |
| Nov 2019 | Be More Creative | Phil Holtan |
| Dec 2019 | Holiday Ornament | Beth Ireland |
| Jan 2020 | 3-Pointed Vase/Box | Bob Meyer & Mike Hunter |
| Feb 2020 | Long-stem Natural Edge Vessel | Tom Sciple |
| Mar 2020 | Hollow Form | Rudy Lopez |
| May 2020 | Shop/Multiple Topics | Lyle Jamieson |
| | | Mike Mahoney |

| <u>Newsletter</u> | <u>Demo</u> | <u>Demonstrator</u> |
|-------------------|-------------------------------|----------------------------|
| Mini # 11 | Bowl Turning. Part 1 | Dan Larson |
| Mini # 12 | Bowl Turning. Part 2 | Dan Larson |
| Mini # 13 | Christmas Bell Ornament | Robin Costelle |
| Mini # 13 | Irish (Glenn Lucas) Platter | Dick Hicks |
| Mini #15 | Log Processing Center | Lee Tourtelotte/Dan Larson |
| Mini #16 | Coring | Dan Larson/Dan Ernst |
| Mini #17 | Wing Bowl | Dan Ernst |
| Mini #18 | Finials | Dick Hicks |
| Mini #19 | Natural Edge Bowl | Bob Meyer |
| Mini #20 | End Grain Platter | Dan Larson |
| Mini #21 | Michael Mode Style Bowl | Lee Tourtelotte |
| Mini #22 | Super Simple Segmenting | Jim Jacobs |
| Mini #23 | Turning & Painting a Mushroom | Linda Ferber/Rosanne Gold |
| Mini #25 | Stamping & embossing | Joan Sauvageau |
| Mini #27 | Pepper Mills | Steve Miller |
| Mini #28 | Marking Turnings | Linda Ferber |
| Mini #29 | Texturing, embossing | Mike Peace |
| Mini #31 | Xmas Ornament | Hunter/Meyer |
| Mini #32 | Calabash Bowl | Emiliano Achaval |
| Mini #34 | Bowl Basics, Twice Turned | Sam Angelo |
| Mini #35 | Shop design, arrangement | Mark Palma |
| Mini #36 | Skew Fundamentals | Jim Jacobs |
| Mini #38 | Lidded, beaded bowl | Glenn Lucas |
| Mini #39 | Christmas ornaments, gifts | Dan Larson, Dick Hicks |
| Mini #40 | Richard Raffan style box | Mike Hunter |
| Mini #43 | Walnut; Quarter-sawn platter | Mike Mahoney |
| Mini #44 | Embellishments | Linda Ferber |
| Mini #45 | Heart-shaped NE bowl | Dan Ernst |
| Mini #47 | Finishing | Eric Lofstrom |
| Mini #51 | Flame Texturing | Art Lietsman |
| Mini #53 | Bowls & Platters from Boards | Charlie Prokop |
| Mini #53 | Carbide Tipped Tools | Mark Palma |
| April-1 2021 | Sharpening | Kirk DeHeer |
| April-2 2021 | Compound Miter Segmenting | Jim Jacobs |
| May-1 2021 | Miniatures | Marie Anderson |
| May-1 2021 | Brushes | Linda Ferber/Rosanne Gold |
| May-2 2021 | Rings | Lee Luebke |
| May-2 2021 | Blue Jeans Bowl | Mark Palma |



Editor's Notes

A couple of the Sub Groups are planning on meeting in person. It will be good to be able to get together again and we hope to be able to have a full MWA meeting in the fairly near future.

Everybody please get vaccinated so that there will be such a low occurrence of Covid-19 that we will be able to resume our meetings at the amazing venue of Houck Machine.

Make “Something For The Kitchen” and submit a picture for the August Member Challenge. There's no judging, the prizes are given through a drawing of names. There were very few submissions for the July Challenge.

The newsletters are back on a monthly schedule, being published near the end of the month. Please send pictures of your turnings, articles, suggestions for newsletter items to:

Mike Rohrer

Editor

mdrprof@gmail.com



