

# MINNESOTA WOODTURNERS ASSOCIATION

*in association with the American Association of Woodturners*

June 2007

## New MWA Membership Benefit - Online Discussion Forums

Pictures of recent posts to the members only forum



This membership only forum is located at <http://www.mnwoodturners.com/members/>. You will also be able to get to the forum from the home page of the website at <http://www.mnwoodturners.com>. When you register on the forum, your username must include at least your last name. The ideal username is the first letter of your first name, and your full last name. So, if your name is John Doe, then your username should be entered as jdoe.

## Minnesota Woodturners Association

### Board Members

#### President

Jim Zangl  
Jim.w.zangl@healthpartners.com  
651-645-4696

#### Vice President

Bruce Thompson  
952-442-4610

#### Program Director

Dan Rominski  
drominski@comcast.net  
651-436-5928

#### Secretary

Mike Hunter  
mlh55410@aol.com  
612-922-1197

#### Treasurer/Membership

Pam Johnson  
Pam\_doug.johnson@comcast.net  
651-430-1738

#### Newsletter Editor

Jeff Luedloff  
jefflued@peoplepc.com  
952-496-1177

#### Librarian

Bob Jensen  
1woodworker@earthlink.net  
763-572-0525

#### Web master/Newsletter Mailings

John Haug  
jhaug@pclink.com  
763-767-2460

#### Hands-On Coordinator

Joe Ugro  
jugrojr@comcast.net  
651-426-2621

#### Forum Administrator

Wade Wendorf  
wwendorf@abacus.com  
763-232-1684

#### Members-At-Large

Jack Frost  
jlfrost@tcinternet.net  
651-777-8019

## President's Corner



Jim Zangl

Congratulations to Chuck Pitschka for winning the best turning award at the 2007 Northern Woods Exhibition

I hope that everyone has looked in on our web site. John Haug (our webmaster) has been running slide shows of the Jimmy Clewes hands on sessions and the demonstration.

I hope that some of the impact of the demonstration comes through. It is nothing like being there in person and seeing these professionals at work. I get a lot out of seeing demonstrators like Jimmy, Alan and Cindy work, listening to what and why they are doing a certain thing, their different views on what the tools are for, and how they are best used.

There are many approaches to a single goal. Last time I included a letter from Mike Darlow. He was thoughtful in his discussion on demonstra-

tors who said things like, "I don't know why this works, but it works for me..." We have been fortunate in having demonstrators that have not taken that approach, who know why they are doing what they are doing and have been more than capable of explaining how and why they are doing what they are doing.

As I write this, I received an e-mail blast from Johannes Michelsen advertising a three day course with Graeme Pridde. Three days, six hundred and fifty dollars, bring your own wood. For just a few dollars less (620.00) we have had the opportunity to spend a day with Jimmy or Cindy or Alan, all internationally known wood artists and hear their thoughts and see their technique.

For me a book only takes me so far and trial and error can produce some awfully bad habits (as well as a lot of garden path mulch). To see how it is done and hear why takes the guess work out of it, which leads eventually to that perfect bowl.

Dan has several demonstrations planned for this year and next; take advantage of the opportunity yet to come, there is always more to be learned.

Announcements: We will be demonstrating at the Washington County Fair this year, Pam Johnson is coordinating that event, so contact her and

*(Continued on page 3)*

(Continued from page 2)

let her know that you are willing to give her a hand. To use the lathe in a demo situation, you need to be a current member of the AAW (this is because of liability issues) but you can be a greeter if not an AAW member and still help out.

We have Alan's demo at his shop, a picnic, a demo by Stuart Batty and another by Donald Derry. I hope to see you all at one or more of these events.

See you at the next meeting.  
Jim



**2007 Northern Woods best woodturning**  
**By Chuck Pitschka**  
**Five legged maple vessel,**  
**gnarled maple with cherry burl legs**

MWA Treasurer's Report		
2006	2007	2007
Actual	Budget	5 Month Actual
Members 250	Members 250	Members 247
Income \$7,527	Income \$7,900	Income \$4,164
Expenses [\$7,635]	Expenses [\$9,692]	Expenses [\$2,891]
Gain [loss] [\$108]	Gain [loss] [\$1,792]	Gain [loss] \$1,273
cash balance 5/20/07 \$5,405		

## TREASURER'S REPORT HIGHLIGHTS

The club received a \$1000 grant from the American Association of Woodturners (AAW) for tool purchases, as well as a \$300 honorarium from the American Crafts Council for Jim Zangl demonstrating at their event in March. The Jimmy Clewes demonstration was well attended (43) as were the workshops (30), and the silent auction of Cindy Drozda's items gave the club a gain of approximately \$600. Membership continues to grow, three short of surpassing last year's record. Expenses paid these past two months include a donation for Jim Sannerud's Ukrainian orphanage trip, videos, face shields, and materials for the upcoming June tool making session. The on-line version of the newsletter has been well received. We continue to mail hardcopy to members (23) that do not use the internet.



# Wall Sculptures

By Gerd Knops

At the April MWA club meeting Duane Gemelke showed us how he makes his unique wall sculptures. The process is deceptively simple: Turn a sort of platter with bead and cove pattern, cut it into strips (straight or wedge shaped), and glue the strips back together at an offset.

## Wood selection

The wood used should have these properties:

- Easy to cut
- Easy to sand
- Not too much figure as to not distract from the three-dimensional appearance of the final product
- Even shrinkage rates across all dimensions, a good Wood Shrinkage Table can be found at this address:

[http://www.woodbin.com/ref/wood/shrink\\_table.htm](http://www.woodbin.com/ref/wood/shrink_table.htm)

Duane started out with Butternut. While easy to sand, it does like to tear out while cutting. Next he tried soft Maple. The problem here was excessive movement due to the moisture introduced while gluing. Currently Duane works with Beech, which provides a reasonable compromise. Other possible alternatives to try might be Hickory or some (though expensive) exotic woods.

## Wood preparation

Duane starts out with a board 3/4" thick. The size is limited by the swing of the lathe, so around 10" to 12" for smaller lathes, or 16" for larger lathes. For those larger sizes to boards can be edge-glued together. If the wood does have some figure, a thicker board can be re-sawn to get a book-matched appearance. Later the first cut can be

made along the glue line so it will not show.

A small hole is drilled into the center, this will make it easier later to center the board on the lathe. Now a disk of the desired diameter is cut out of the board. Next one side of the disk needs to be flattened perfectly. Start out with a disk of scrap wood attached to a face plate. Flatten the scrap using a light sheer cut and frequently check flatness with a steel ruler. Now our work disk can be mounted on the lathe using the tail stock registered on the center hole to press the disk against the scrap disk. Flatten the work piece using the same technique used to flatten the scrap on the face plate. Light cuts are paramount as the disk is not secure. The remaining bump obscured by the tail stock is then sanded away by hand.

The flattened side of our disk is now glued to the flattened scrap on the face plate. The most secure way is a paper glue joint: Using wood glue, glue the flattened sides of the disk and the scrap together, sandwiching some craft paper or paper cut from a brown paper shopping bag. Doing it on the lathe with the tail stock registered to the hole in the disk will make it easy to align it to the scrap on the faceplate. Add clamps and let dry. This will result in a secure bond, but the paper will allow it to be separated once the turning is done.

A less secure method (and hence not recommended) is to use double faced tape to glue the disks together. Duane prefers *Heavy Duty Carpet Tape*, which contains a thin layer of fabric (available at Menards and other home improvement or hardware stores). Clamping pressure for about 15 minutes will make the bond more secure.



## Turning

Next a pattern is laid out on the wood. Duane uses 3/8" beads and 3/8" coves, separated by 1/8" steps. Mark your layout with small marks, mount the disk on the lathe, and transfer the marks in the round by rotating the disk.

Cutting the beads and coves onto the flat face is a lot different than with spindle work. Gouges are not well suited due to the extreme tool angle required. On larger lathes a short gouge with a short handle could be used, though on smaller lathes it will hit the lathe body. A possibility would be a lathe where the head can be rotated to allow outboard work.

A staple during the yearly tool-making sessions is a simple cove tool. This works better than most other tools but still leaves some tear-out.

Duane's solution is to use the Mike Hunter tool with the cup cutter. This tool does not require the bevel to rub, and it also allows to work uphill without creating excessive tear-out.

To save time, the beads can be rough-cut with a beading tool. The tools sides need to be ground slightly as unlike with spindle work the beads on the face will curve. However, being basically a scraper

the beading tool will result in some tear out, so the cup tool will be needed for a final cleanup cut. Finish the cuts, and sand if needed. Separate the disk from the scrap.

### Finishing Part 1

It is a lot easier to finish the surface now than later when the individual pieces have been cut. An oil finish can be used, but to finish the exposed areas after the cuts will require time. An easier way is to use a lacquer from a spray can, but due to the strong (and unhealthy) fumes a well ventilated area is mandatory to use this finish. Another option is to use sanding sealer which has moderate fumes. Once the sculpture is assembled, a final coat of some other finish (lacquer, shellac etc) and then be applied.

### Cutting the Strips

Next the disk is cut into strips. In our example Duane used slightly wedge-shaped strips, but straight cuts can be used as well for a different finish look.

A table saw or chop saw might be used, but the thick kerf and the danger involved cutting the last small pieces do not make those the ideal tools. Duane uses a bandsaw. For the first cut mark a center line down the back of the disk (again the small hole in the center will make this easy), and transfer the line over to the sides. For the actual cut Duane prepared a jig similar to a cross cutting sled, but adapted to the bandsaw. The disk is affixed to the sled using a couple of small pieces of double-faced tape, then cut. Next sand the freshly exposed surfaces, again checking with a steel ruler for flatness. The thin strips are harder to sand than the larger pieces, so always sand before the next cut.

To cut the wedged-shaped strips, Duane uses another jig: a board with wood strips affixed to it to make a tapering jig-like jig. This jig rides against the bandsaw's fence. For symmetric work, two jigs are required with the taper angle reversed, one for each half of the wood.

### Creating the shape

Now the fun part starts: Assemble the strips. Many variations are possible: Varying offsets, reversing every other strip etc. See the photos for some examples.

Duane does this on a board with a slit cut in. The slit allows drawing a witness mark on the underside of the strips to make it easy to find the desired position during final assembly.

### Finishing Part 2

Once a pleasing shape has been found, draw the witness line and finish the newly exposed parts of the wood. Finishing now is important, it will make it easier to remove squeeze-out during glue-up.

### Final Assembly

Now on to final assembly: First glue up pairs of strips, using plenty of clamps and removing any squeeze-out immediately. Angle iron can be used between the strips and the clamps to even out the clamping pressure. Then glue the pairs together, clamp and clean, and continue until all pieces are glued together. Duane prefers water-based clear drying PVA glue, such as *Titebond Molding & Trim Wood Glue*.

As the segments are glued together, the resulting structures can have shapes not well suited for regular clamps. Duane devised an assembly table that allows round pieces of

woods to be placed in various holes drilled in the board. Machine screws through the wood pieces produce the clamping pressure. Once all pieces are glued together and have dried, the back is sanded flat, as assembly will always result in some slight unevenness.

A final touch is to devise some method to allow hanging the sculpture to the wall. In earlier sculptures Duane used a keyhole bit in a router to cut a keyhole into the back. But the required depth of the keyhole brings it very close to the surface of the front. So Duane came up with another clever solution: keyholes cut into round pieces of Formica or a similar material. Drill a shallow hole the thickness of the Formica pieces using a Forstner drill bit, and a slightly deeper hole (but not too deep to come close to the surface on the other side) where the keyhole will be located. Glue the Formica onto the opening.

### Ideas

The above process allows for a lot of variations to produce different results. Contrasting woods can be glued up resulting in the coves being a different color than the beads. The angle of the slices can be varied. The initial surface treatment can be modified. This is a great project to experiment with!

### Handout

Duane Gemelke provided are great illustrated handout that describes the above process. It is available to [MWA](#) members who have signed up to the forum [in the forums Library section](#).

(ed. See back cover for photos from Duanes demo.)

## Jimmy Clewes Demonstration. May 5, 2007

Article by Bruce Thompson, Photography by Jim Zangl

May 5 was a wonderful day was spent watching Jimmy Clewes demonstrate. He is a very gifted turner and showed us how to make three of his projects.



**Master Turner Jimmy Clewes**

The first was his “Oriental Box”, which started as a piece of seasoned maple about 12 x 4 x 2.5”. He mounted this with a wood worm screw held in a scroll chuck. This was turned very fast so the bowl gouge he used to cut the bottom shape would be less prone to bouncing from the gaps. In this setup he made the shape for the wings and the bottom of the bowl and a tenon for remounting it.



Jimmy emphasizes design, flowing

curves, and sharp tools. He uses a sharpening jig and makes no apology for using it because of the repeatability for sharpening. Most of the surfaces he made were very smooth but he did power sand with 180 grit and then would normally hand sand to 600 grit. When power sanding the bottom of this bowl, he said to hold the sanding disk very carefully and not at angles because it will either soften the leading edge or get caught in the gap.

Then he remounted the wood with the tenon to turn the top side of the bowl. In order to reduce flexing and chatter, he turns in stages, sort of stair steps his way to the center of the bowl, leaving as much stock as long as possible for support. He left an L-shaped ledge in the bowl for the lid and said this must be “dead-square”. When turning the corresponding tenon on the lid, he put a shallow V shape to the outside so only the peak touches the L from the bowl. He said this is easier to adjust than trying to make two parallel surfaces meet up.



**Club member Eric Johnson shown holding the finished Oriental Box.**

The second project was an end grain bowl made from freshly cut maple, which was mounted between centers and rough turned to true it up. About one inch of the log with bark was left until later.

Last step at this stage is to turn a tenon on the base end for remounting in a screw chuck. With the screw chuck but not using the tail stock, he trued up the piece again and cut into the side to start the bowl curve. He paid attention to getting a clean cut through the bark so it would be a decorative feature on the finished bowl. Again he worked down the bowl in steps doing about an inch of the bowl’s height before moving down again.



**Long ribbons of shavings**

His approach to hollowing is a bit different than others who drill in to set the whole depth. Jimmy cuts near the bowl edge but only so deep to keep strength in the piece as long as possible. After refining the bowl as much as he can reach, he cuts out the center down to the level and then goes back out to the edge again – stair steps. He said when you cut all the way down in one stage; you will have removed any tension in the wood which is holding the bowl. He only releases about a half inch to one inch at a time.

*(Continued on page 7)*



(Continued from page 6)



**The finished end grain bowl is about 1/8 inch thick.**

Jimmy's third project used a fiddle-back maple bowl blank; special wood with lots of character he called "chatoyencey" or cat-eyes. He used a screw center with a spacer to limit the depth of hole needed for the screw. The bottom was turned, a tenon cut in for re-mounting, and then power-sanded. He used alcohol to flood the surface, lit this on fire, then sprayed it with alcohol from a spritzer. [Be especially careful if you choose to use this method, Jimmy carries extra insurance and legal waivers for his demos. The MWA club does not endorse using this method.



**The bottom of the platter with tenon**

He used the flame to speed the drying of the surface as his technique doesn't heat up the wood, just the surface. Then he applied sanding sealer and Watco oil.

After flipping and remounting the

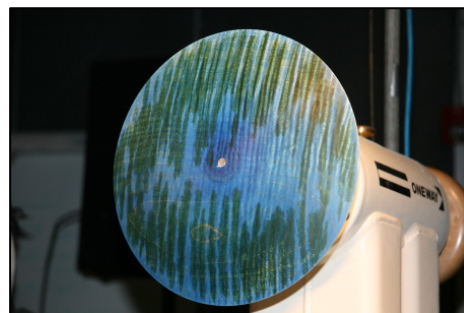
platter, he cut the top surface to a smooth arc. Jimmy does most of his turning with only three tools; an Irish-grind winged bowl gouge, a narrow parting tool with straight (not diamond shaped) sides, and a 1/4" bowl gouge with a steep "micro bevel". This gouge is ground more in the traditional shape than the Irish grind, but has a bevel angle necessary to get the gouge into the curve of the bowl. Sometimes this includes putting a second bevel or micro bevel on the gouge. He uses a superfine diamond hone to get the edge "dead-sharp".



**Jimmy applies the first blue color**

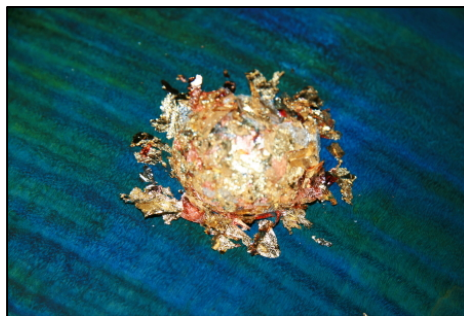
He applied colored aniline dyes to the surface starting with blue. He said he tries to give more blue in the center of the bowl and a little less towards the rim. After this dries a bit, he very lightly sanded some of the blue with 600 grit sandpaper, just enough to allow some of the wood to show through again in the outer third of the bowl. Then he used a green dye to dab on spots of green between the blue streaks. If the figure of the wood was corduroy-like, some of the blue would be on one peak and the green between peaks. Later he dabbed some yellow to mingle with the blue and green. The surface was spritzed again with alcohol so the colors could flow together. (the bottle spray was from three feet away so the spray would not be concen-

trated). Then the surface was sealed with sanding sealer, followed by Watco penetrating oil. He said the oil builds much faster after using sanding sealer.



**The green color was dabbed between some of the blue**

The next step was to cut a small bowl shape in the center of the top. He applied glue and then some flakes of a gold-silver-copper mixture. These were tamped into the glue and then the excess was brushed away.

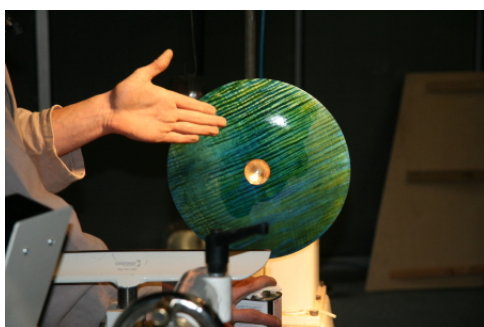


**Flakes of gold-silver-copper tamped into the adhesive**

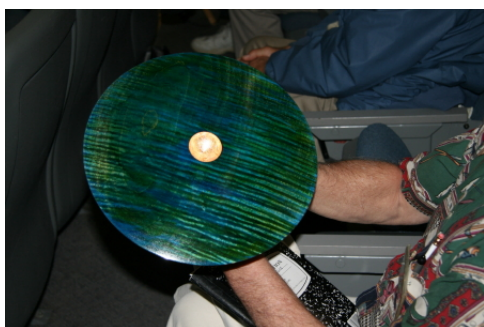
(Continued on page 8)

(Continued from page 7)

Some lines were applied with a black sharpie to define edges of the surfaces. Then he applied sanding sealer to seal the color and applied Watco oil, which really started emphasizing the chatoyence of the wood. He said lacquer could be substituted for the oil.



Note the difference where the oil has been applied



The finished platter with blue, green, and yellow dyes and flakes of gold leaf.

Later club members gathered at the home of Mike Hunter for a small BBQ and opportunity to talk with Jimmy. The colored platter was placed out in the sun and the character of the wood really was special, just like the day. Thank you Jimmy!

## June 23 Tool Making Hands-On Session

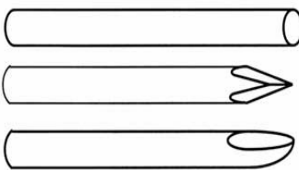
The next monthly meeting will be held at Jim Sannerud's workshop in Ham Lake on June 23. The topic will be Making Some Tools for Turning. Pictured below are three choices to select from. You can attend the Saturday session (max number of people is 25, so please register early) or you can order the kit and work on it at your shop. The kits include everything except the wood, but Jim Jacobs has provided some wood for the hands-on session so you can turn the handle that day. The blank rods are made of M2 HSS and you can grind any shape you wish on the end. The kit for this includes a 1/2" copper ferrule for the handle and the 5/16 x 4.5"

tool shaft.. The Binh Pho shear scraper is his design and we are purchasing the scraper bits from him. The kit includes a rectangular scraper and a curved scraper insert, the 5/8 x 12" tool shaft, a 1" copper ferrule for the handle and a set screw which you will have to drill and tap. The Hunter tool is provided by Mike Hunter and is the same carbide insert that you have been hearing good things about. The kit will include the insert and a wrench, the 1/2 x 12" tool shaft and a 3/4" copper ferrule for the handle. Please contact Bruce Thompson at 952-442-4610 to register or to just purchase a kit.

### Choices for 2007 Tool making session

Please circle choice, indicate amount, sign and date

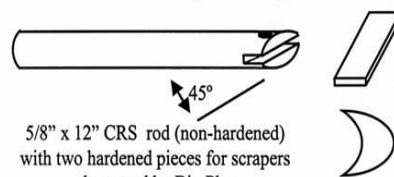
#### #1 - Blank rod



5/16" x 5" M2 drill rod (hardened)  
can grind any shape on end  
ex. skew or scraper

Only 60 available @ \$6.00 ea

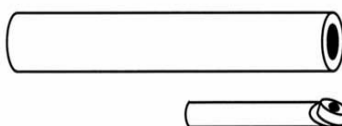
#### #2 - Three part scraper



5/8" x 12" CRS rod (non-hardened)  
with two hardened pieces for scrapers  
sharpened by Bin Pho

\$20.00 each

#### #3 - Hunter tool



Hunter tool tip 3/16" x 2" with insert  
plus 1/2" x 9" non-hardened drill rod  
to hold insert

Limit one each at \$55.00

Name: \_\_\_\_\_ Date: \_\_\_\_\_

#1 = \_\_\_\_ @ \$6 = \_\_\_\_

#2 = \_\_\_\_ @ \$20 = \_\_\_\_

#3 = one @ \$55 = \_\_\_\_



## Youth Hands On Workshop – Stillwater

*By Pam Johnson*

Despite the wind chilling cold, eight 4H youth ranging in age from 11 to 17, met in the Johnson's garage (unheated) on Good Friday afternoon to turn pens. Several youth had turning experience, while others were complete novices. MWA members Pam & Eric Johnson coordinated the activity, and MWA member Todd Williams from Lake Elmo assisted.

Everyone went home with one finished pen, and some took home two. The experienced turners were able to assist others with their techniques. The kids learned what a shattered pen blank means, and they learned some woods turn easier than others. Everyone learned cyanoacrylate doesn't set well in the cold.

A special thanks is extended to



MWA members Bob Jensen for providing the wood for the pen blanks (the redheart was a favorite); Joe Ugro for his gouges and pen mandrel; Mike Hunter for his pen mandrel; the club for its four mini lathes. Enthusiasm was strong for another turning workshop.



## JULY CLUB MEETING AND DEMONSTRATION BY ALAN LACER: TOPIC – BOCCE BALL CHALLENGE

**Saturday July 21, 2007**

**Time: 9:00 AM - 1:00 PM**

**Fee: \$10**

**Location: Alan & Mary Lacer's**

299 Plainview Drive  
River Falls, WI, 54022  
Phone: 715-426-9451

**Simple directions:** Take Highway 94 eastbound over the St. Croix River bridge into Wisconsin. Take the second exit (the one at the top of the hill)-which is Carmichael Road/County Road F. Follow County Road F to the south. Plainview Drive is located just past the Troy Burne Golf Course. Turn right (west) and Lacer's will be on your left.

<http://maps.google.com/maps?sc=1&hl=en&output=html&q=299+Plainview+Drive%2C+River+Falls%2C+WI+54022&btnG=Search>

The July MWA Club meeting will be held at the home and studio of our own resident Professional Woodturner, Alan Lacer. Weather permitting the demonstration will be held outside. Please bring your own lawn chairs! We will have the Video Library, do a Wood Raffle and have Show and Tell as well.

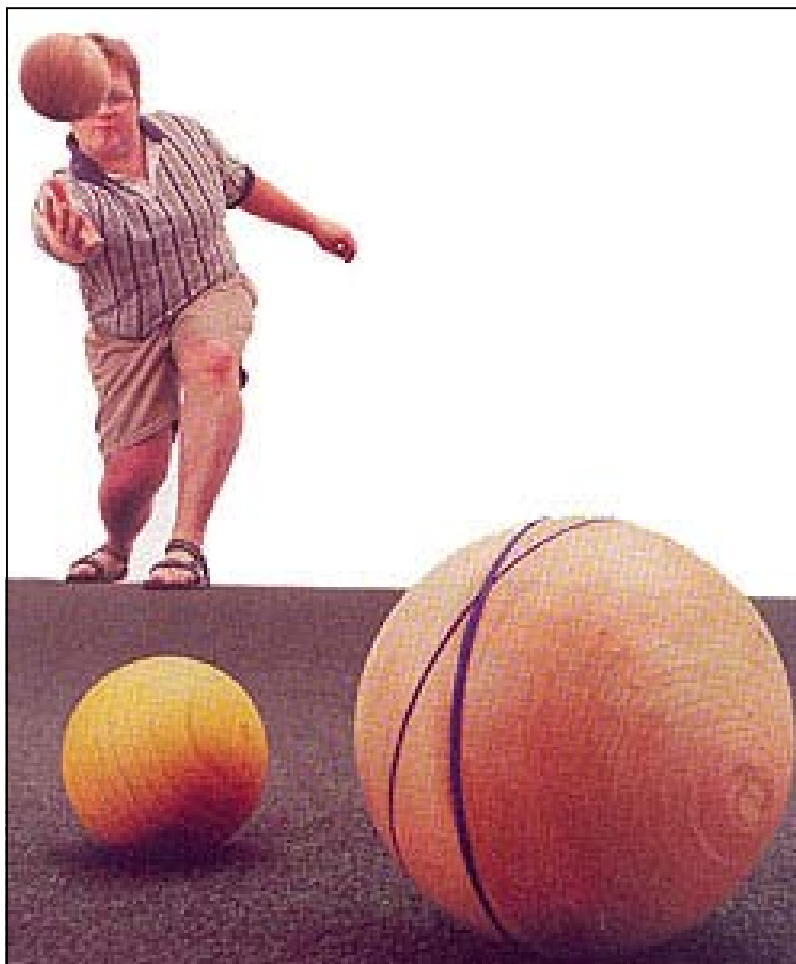
Parking could be somewhat challenging at Lacer's. Carpooling is

encouraged. A Park and Ride lot is located near the Target store in Hudson. Also, the Home Depot has a very large parking lot.

We are all very fortunate to have Alan so very close to us. Every time we have the opportunity to take in one of his demonstrations, we should consider ourselves lucky, for he has so much knowledge to pass on, and is an extraordinary teacher to boot!

In this demonstration, Alan will teach us how to make a sphere. Freehand turning of a near perfect wooden sphere without flat spots or bumps is a wonderful challenge for a turner. Whether it's for croquet, furniture drawer knobs or simply as a decorative object, the wooden sphere is a wonderful exercise in developing a pleasing form, tool control and understanding grain direction.

For our next club challenge, we've chosen to make wooden balls for the ancient game of bocce ball. Originating in the Middle East



some 7,000 years ago, the game was popular with ancient Greeks and Romans. It hit its heyday in 16th century Italy, where it was something of a national sport. Much of the vocabulary and manner of play stems from this period. Bocce balls are 4 inches in diameter, and you may turn and decorate as many balls as you like. We will judge our Bocce Balls at the MWA Club Picnic, held on August 19<sup>th</sup> at the Lion's Shelter in Roseville's Central Park. Craft Supplies gift certificates will be awarded to for 1<sup>st</sup>, 2<sup>nd</sup>, and 3<sup>rd</sup> place.

# MWA ANNUAL CLUB PICNIC

**Sunday August 19, 2007**

**10:00 AM - 3:00 PM**

**Location: Roseville Central Park  
– Lion's Shelter**

2545 Victoria Street North □

Roseville, MN, 55113 □

**Directions:** Located North of Highway 36, East of Lexington and South of County Road C.

[http://maps.google.com/maps?q=2545 Victoria St.  
N+Roseville+MN+55113](http://maps.google.com/maps?q=2545+Victoria+St.+Roseville+MN+55113)

- Games with prizes for the spouse/guests
- We'll have the regular show and tell
- No library
- No wood raffle

Bring the whole family! This is a beautiful park in Roseville. The octagonal Lion's Shelter sits atop a hill overlooking Lake Bennett and is a short walk from the lakeside waterfall.

Bring your own meat for grilling as well as buns or bread AND a dish to share.

Last names A-O bring salad or main dish

Last names P-Z bring dessert

Also suggest lawn chairs, lawn games, bug spray, etc.

The following will be provided:

Grills, beverages, condiments, plates, napkins, eating utensils and sweet corn!

Please bring small turnings to be donated as spouse prizes.

## Turning Challenge!

This year's challenge is turning a Bocce Ball. At the July Club meeting, we will have a demonstration by Alan Lacer on how to turn a ball for the ancient game of bocce ball. Originating in the Middle East some 7,000 years ago, the game was popular with ancient Greeks and Romans. It hit its heyday in 16th century Italy, where it was something of a national sport.

Much of the vocabulary and manner of play stems from this period. Bocce balls are 4 inches in diameter, and you may turn and decorate as many balls as you like. We will judge our Bocce Balls at the MWA Club Picnic. Craft Supplies gift certificates will be awarded to for 1<sup>st</sup>, 2<sup>nd</sup>, and 3<sup>rd</sup> place.

## The Rules Of Bocce Ball

Official bocce ball is played on a court of fixed dimensions, often with walls and backstops. What most of us play is an informal version or "lawn bowling." Here are the basic rules:

There are two teams, played with two, four, or eight players. In games of two or four players, you can get by with only four bocce balls. The game is a bit more interesting, though, if you play with a full set of eight balls.

By a flip of a coin or some other means, choose one side to roll the small ball (pallino) out into the playing area. All throws must be made behind a real or imaginary foul line.

The side that placed the pallino rolls one bocce ball as close to the pallino as possible (even touching it). This becomes the "point ball."

The opposing side rolls all of its bocce balls to see if it can come closer to the pallino than the "point ball."

The starting team rolls the remainder of its bocce balls to see if it can come closer to the pallino than any of their opponents' balls.

Points are awarded after all bocce balls have been thrown. A point is awarded for each ball closer than any of the opponents' to the pallino. Games are played to 12, 16, or 21. Often the winner must win by at least two points.

Yes, you may hit the pallino, your own team's previously thrown bocce or the bocce of the opposing team!



## Demonstrators and turning entries sought for Washington County Fair, Aug. 1 - 5, 2007

Please contact Pam Johnson if you would be interested in demonstrating at the Washington County Fair. Remember; because of insurance liability, you need to be a member of AAW to demonstrate on the lathe. It's nice if two people work a shift. One can talk, one can turn. The talker does not need to be an AAW member.

Participants will receive free admission; so, after demonstrating you can wander about the fairgrounds.

Consider entering your favorite turning(s) too. Check the Fair web site:

[www.washingtoncountyfair.org](http://www.washingtoncountyfair.org)

under Exhibitor Information, Woodworking Division. Premiums (\$\$) and ribbons are awarded to top entries. You do not need to be a resident of Washington County to enter the competition..

Wednesday, Aug. 1

6:00-9:00 PM

Thurs., Fri., Sat. - Aug. 2, 3, 4

10:30 - 1:30

1:30 - 4:30

4:30 -7:30

(likely to share space with the MN Woodcarvers on 8/3)

Sun., Aug. 5 10:30 - 1:30

Pam Johnson

651-430-1738

[pam\\_doug.johnson@comcast.net](mailto:pam_doug.johnson@comcast.net)

## Club Craft Supplies Order Saves MWA Members \$\$

The Club's October 2006 purchase saved participating members 18% off their individual Craft Supplies order.

	<u>April '06</u>	<u>Oct '06</u>
# of participating members	28	24
Catalog price	\$5,240	\$4,082
Discounted cost	<u>\$4,395</u>	<u>\$3,326</u>
Total discount	\$845 or 16%	\$756 or 18%

## MWA Wood Sealer Program

The MWA is currently buying sealer in 55 gallon drums, enabling us to sell to our members at a fantastic price of only \$8 per gallon. Our club could use a few clean, empty gallon jugs, such as windshield washer fluid jugs for bottling; bring some to our monthly meetings. This super bargain sealer is available at our monthly meetings, or contact the following for other special arrangements:

Bob Jensen—Fridley 763-572-0525  
Jim Blare-Lakeville 952-469-3687  
Ron Meilahn-Andover 763-862-2100  
Bruce Arones 651-433-5364

**New  
Members**

**Please welcome our  
newest members:**

<b>Walt Elmore</b>	Balsam Lake, WI
<b>Keith Chwialkowski</b>	Marine on St. Croix, MN
<b>Dan Bernier</b>	Dayton, MN
<b>Don Waldbillig</b>	St. Paul Park, MN
<b>George Johnson</b>	Oakdale, MN
<b>Neil Robinette</b>	Brooklyn Park, MN
<b>Pattie &amp; Laura Reinke</b>	Stillwater, MN
<b>Bob Herskovitz</b>	St Paul, MN
<b>Don Sage</b>	Andover, MN
<b>Joe Beste</b>	Brandon, MN
<b>Charlie Prokop</b>	Woodbury, MN

# Calendar of Events

## June 2007

Sun	Mon	Tue	Wed	Thu	Fri	Sat
					1	2
3	4	5	6	7	8	9
10	11	12	13	14	15	16
17	18	19	20	21	22	23
24	25	26	27	28	29	30

## June

**23rd Saturday** - Tool making. Limited number of participants. Prior Registration required. See page 8 for registration info and complete details.

## July

**21st Saturday** - 9:00 –1:00 Alan Lacer will demonstrate turning a sphere. (bocce ball) See page 10 for details.

## August

**1st-5th** - MWA woodturning demos at the Washington County Fair.  
**19th Sunday** - Club Picnic and bocce ball challenge. See page 11 for details.

## August 2007

Sun	Mon	Tue	Wed	Thu	Fri	Sat
			1	2	3	4
5	6	7	8	9	10	11
12	13	14	15	16	17	18
19	20	21	22	23	24	25
26	27	28	29	30	31	

## September

**29th Saturday** - Stuart Batty Professional Demonstration at MCAD from 9:00 AM - 4:00 PM.

## October

**16th Tuesday** - T.B.D.

## September 2007

Sun	Mon	Tue	Wed	Thu	Fri	Sat
						1
2	3	4	5	6	7	8
9	10	11	12	13	14	15
16	17	18	19	20	21	22
23/30	24	25	26	27	28	29

## November

**10th Saturday** - Donald Derry Professional Demonstration. 9:00 AM - 4:00 PM. Location TBD

## December

**8th Saturday** - MWA Holiday Party at the Hope Presbyterian Church in Richfield.

## October 2007

Sun	Mon	Tue	Wed	Thu	Fri	Sat
	1	2	3	4	5	6
7	8	9	10	11	12	13
14	15	16	17	18	19	20
21	22	23	24	25	26	27
28	29	30	31			

## November 2007

Sun	Mon	Tue	Wed	Thu	Fri	Sat
				1	2	3
4	5	6	7	8	9	10
11	12	13	14	15	16	17
18	19	20	21	22	23	24
25	26	27	28	29	30	

## Member helpline????

Do you have a woodturning question? Need help finding woodturning advice? Well, these members can help you! Contact for your woodturning related questions today!

Bob Jensen - 1woodworker@earthlink.net (763) 572-0525

George Dupre—gtdupre@centurytel.net (715) 448-3002

Jim Jacobs—woodmanmn@aol.com (651) 437-2302

Jim Zangl - Jim.w.zangl@healthpartners.com (651) 645-4696

Bruce Arones-barones@frontiernet.net(651) 433-5364

---

## Member lists

Any one member interested in a listing of current MWA members, please contact Pam Johnson, Treasurer at [pam\\_doug.johnson@comcast.net](mailto:pam_doug.johnson@comcast.net) or 651-430-1738. Please note, it is for personal use only. If any member prefers their name not be distributed, contact Pam.

---

## Library

The MWA has an extensive library of video tapes and DVDs available for member checkout. The cost is \$2.00 each rental and we request you return them at the next meeting. If you are unable to attend the following meeting please mail them back to:

Bob Jensen, 140 Rickard Rd., Fridley, Mn. 55432

---

The **Minnesota State Fair** invites all residents to enter a juried completion to be held during the Minnesota 2007 State Fair. More info at [mnstatefair.org](http://mnstatefair.org).

---

## Monthly Wood raffle

The wood raffle is a great tradition for our club. It acts as a fund raiser plus it allows all of us to experience a variety of woods. When you select wood to bring for the raffle bring only the best. If it is cracked, or "punky" put it in the fireplace. Bring the best wood you have and you can expect to get the best wood in return.



**Wooden Rocking chair made by MWA member Chuck Pitscka. "the 28 little rings on the rope between the blocks and each side are turned from "Redheart".**

## Email Alert !!!!

Our current MWA 'Email Blast' list shows approx. 30 members that do not have a valid email address; and, therefore, they are not receiving our numerous Blast messages each month. If you have an email address, but are not receiving our 'blasts' please contact me so we can update our data base. It may be that you currently do not have internet and email capabilities; if that changes and you want to be included please contact me.

thanks,

Ron Meilahn

763-862-2100

[ronmeilahn@usfamily.net](mailto:ronmeilahn@usfamily.net)



# Classifieds

Sharp carbide hollowing tools. No grinding and no lapping. The tool that Jimmy used at his demo. You saw the tool in action. For more information, take a look at [hunterwoodturningtool.com](http://hunterwoodturningtool.com) or call Mike at 612-718-7926.

Razor  
Sharp,  
Indexable  
Carbide



Wood Lathe Tools

- No grinding or lapping of the tool
- Each new cutter is sharpened & ready to use
- Tool life is 25 - 30 times even 100 times your expectations with high quality HSS
- All tools are manufactured to high quality standards, every holder has an aluminum oxide finish to prevent rust
- Roughing & finishing tools use the same insert
- New tool bits, torx screws, and torx wrenches are reasonable & readily available
- Strong metal shanks minimize vibration & chatter

FOR MORE INFO OR TO ORDER CONTACT:

**HUNTER TOOL SYSTEMS**  
Minneapolis, MN  
612-922-1197 • 612-922-1533 (fax)  
[www.hunterwoodturningtool.com](http://www.hunterwoodturningtool.com)

Patent Pending

**Turning lessons:** Professional artist/turner offering beginner to advanced turning lessons. All materials and equipment supplied. Call for complete details. Joel Cole 612-408-3037

Free turning-related ads for MWA members.  
Commercial/non-member advertising \$4.00/Issue per column inch. To place ad, contact Jeff Luedloff ([jefflued@peoplepc.com](mailto:jefflued@peoplepc.com)) or (952) 496-1177

Ads will run for one issue unless you call to extend your ad for additional issues.

## SUPPLIER DISCOUNTS to MWA MEMBERS

The following suppliers offer special discounts to MWA members. To receive a discount you must be a member in good standing, and show your current membership card to the merchant.

### ABRASIVE RESOURCE

900 Lund Blvd #400, Anoka, MN  
763-586-9595 or 1-800-814-7358  
No showroom - Internet or catalog orders only.  
Sandpaper, coated abrasives, rolls, clearance items - 20% discount  
[www.abrasiveresource.com](http://www.abrasiveresource.com)

### ROCKLER WOODWORKING

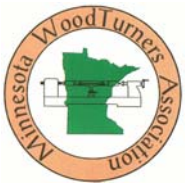
Mpls, 3025 Lyndale Ave S 612-822-3338  
Burnsville, 2020 W Cty Rd 42, 952-892-7999  
Maplewood, 1935 Beam Ave 651-773-5285  
Minnetonka, 12995 Ridgedale Dr 952-542-0111  
10% discount on all regularly priced items, except power tools.  
Wholesale lumber prices to MWA members.  
[www.rockler.com](http://www.rockler.com)

### WOODCRAFT

9125 Lyndale Ave S, Bloomington 952-884-3634  
10% discount on all items, except power tools.  
[www.woodcraft.com](http://www.woodcraft.com)

### YOUNGBLOOD LUMBER CO.

1335 Central AVE, MPLS. 612-789-3521  
Wholesale prices to MWA members.  
[www.youngbloodlumber.com](http://www.youngbloodlumber.com)



**Minnesota Woodturners Association**  
3378 Heritage Ct.  
Stillwater, MN 55082  
[www.mnwoodturners.com](http://www.mnwoodturners.com)

***First-Class Mail***