

MINNESOTA WOODTURNERS ASSOCIATION

in association with the American Association of Woodturners

December 2002

Happy Holidays! Come Celebrate With Us At Our Holiday Party

Bring your spouse (or significant other) to our Holiday Party in December—in addition to the fabulous people, there will be good food, prizes, raffles, a gift exchange, and more ... can you believe it?! More!

When: Tuesday, Dec. 10th, 6:30 to 10:00 PM

Where: the AAW Office
3499 Lexington Ave., Shoreview, MN

Located $\frac{3}{4}$ mile south of I-694 or 2.5 miles north of T.H. 36 at Harriet Ave. on the NW corner in the lower level of the Catholic Aid Assn. Bldg.
**Parking in the lot at the rear of the building.

Please come prepared to pay your dues (\$25) for 2003—checks can be made out ahead of time to MWA. We'll be handing out your 2003 member-

(Continued on page 9)

Dues Reminder:

Time to renew your membership for another year! Club membership is still one of the best deals around at only \$25 a year. Some of the great things to look forward to in 2003:

- ◆ Continued Hands-on sessions (learn to turn, or expand your skills in a collaborative setting)
- ◆ Interesting topics at our monthly meetings, including demonstrations by professional turners
- ◆ Discounts at select merchants (Rockler's and Woodcraft, etc.)
- ◆ And of course, the camaraderie of your fellow woodturners!

Please send your checks, made payable to MWA, **no later than January 15th**, to:

Ron Meilahn, 13968 Alder Street NW, Andover, MN 55304

The February 2003 newsletter will be your last newsletter if we have not received your dues by January 15th (sorry).

Inside This Issue:

- | | |
|---|---|
| 1 Happy Holidays—celebrate at our Holiday Party | 8 Club Activity Calendar |
| 1 Dues Reminder (very important!) | 9 Holiday Party details — don't miss it! |
| 2 Newsletter correction, New Members, Treasurer's Report | 10 Friday Night With Bob Rosand
<i>by Steve Tiedman</i> |
| 3 Marathon Demo by Bob Rosand—Oct. Meeting
<i>by Cathy Nicholson</i> | 11 Bowl Saver Systems—November meeting
<i>by Cathy Nicholson</i> |
| 3 Presentation by Alan Lacer—January 14th 2003 | 13 Hands-On With Brian Grobe
<i>by Chuck Bjorgen</i> |
| 4 September Mini at Steve Tiedman's Shop
<i>by Chuck Bjorgen</i> | 15 For Sale and Library |
| 6 Thanks!
<i>by Steve Tiedman</i> | 15 www.mnwoodturners.com —club website |

Minnesota Woodturners Association

President

Bruce Arones
barones@minnmicro.com
651-433-5364

Vice President

John Nicholson
jc.nicholson@usfamily.net
763-785-1587

Program Director

and

Secretary

Roger Ronsen
roger.ronsen@earthlink.net
952-890-8713

Treasurer/Membership

Ron Meilahn
ronmeilahn@usfamily.net
763-862-2100

Newsletter Editor

Cathy Nicholson
jc.nicholson@usfamily.net
763-785-1587

Newsletter Mailings

John Ratliff
651-770-6471

Librarian

Linda Ferber
lindaf@copyequipmentinc.com
651-454-5774

Members-At-Large

Don Wattenhofer
drwatt@usfamily.net
763-572-1045

Craig Lossing
craigswoods@yahoo.com
651-785-4194

Steve Tiedman
stiedman@mninter.net
763-789-4505

Chuck Bjorgen
cbjorgen@citilink.com
651-633-8850

CLASSIFIED ADS

Turning related ads are free to members. Commercial ads are billed at \$4 per month, per column inch. To place an ad, call Cathy Nicholson (763) 785-1587 or jc.nicholson@usfamily.net. Ads will run one issue unless you call to extend your ad for each additional issue.

Submission deadline for the next issue:

January 24th

Correction: Otto Gotzsche (below left) was incorrectly identified as Don Robinson on page 7 of the October newsletter. Please accept my apologies!

Cathy N., Editor



Otto Gotzsche and Bill Klopp are entertained by Steve Tiedman on the lathe—that Steve ... he's just an entertaining sort of guy! (Otto had a great T-shirt on, it had a quote purported to be from George Washington that went something like, "Yeah, so I cut down that Cherry tree ... it had a burl on it!") - Photo by Chuck Bjorgen

New Members

Please welcome our newest members:

Tom Strandberg from Stillwater, MN

Rick Bucker from Lakeville, MN

Richard Davideit from Plymouth, MN

Richard Blek from Champlin, MN

Ken Schwichtenberg from Belle Plaine, MN

MWA Treasurer Report

(first 11 months of 2002)

PAID MEMBERSHIP (New Record!!)	173
INCOME	\$8,163
EXPENSES	(\$9,642)
CHECKBOOK BALANCE 11/20/02	\$1,680

A Marathon Demo by Bob Rosand

by Cathy Nicholson

Thirty seven people attended our October meeting to watch an all-day demo put on by professional turner, Bob Rosand. We were able to utilize the club's new audio/visual equipment for the first time—it looked very professional to me! (Thanks to John Nicholson, Duane Gemelke, and John Ratliff for all their hard work.) The projection of Bob's work on the big screen really helped make this demo as interesting as it was. Bob demonstrated a lot of small items, and without the big screen, it would have been difficult for most people to see what Bob was doing.

As Bob was demonstrating his birdhouse ornament, he mentioned that he had been very impressed with Hal Malmlov's



Bob demonstrates for a crowd of over 30 people

Photo by Cathy Nicholson

set-up for finishing ornaments, as well as some of Hal's other shop-made aids. Bob remarked that Hal should send some of his ideas in to the Tips Editor of the Woodworker's Journal!

(Way to go Hal! We have lots of great talent in our club.)

I think I speak for everyone when I say that Bob really

(Continued on page 7)

Join Us January 14th for the First Meeting of 2003!

Tool usage and sharpening are two subjects that are always interesting ... and that's what we'll be featuring at our January meeting! Reserve the date now and plan to attend.

Date: Tuesday, January 14th

Time: 6:00 pm.—9:00 pm.

Location: Roseville Area High School, located on County Road B2 (1 block north of Highway 36) between Hamline and Lexington Avenues. The meeting will be in the School's woodshop, which is located on the east end of the building. As you enter the parking lot, go to the left, which is east, down to the end of the building. The door to the woodshop is on the south side of the dumpsters.

Program: Professional turner **Alan Lacer** will give a presentation about the use of different tools, sharpening, and miscellaneous woodturning tips. Have a woodturning question? ... come to the meeting and take advantage of Alan's expertise!

Other Activities: Library rentals, Sealer sales, Show 'n Tell, and a Wood Raffle.

Please bring your own chair!

September Mini at Steve Tiedman's Shop

by Chuck Bjorgen

The chips flew when as many as nine lathes busily hummed as several members of the Minnesota Woodturners Association (MWA) gathered in Steve Tiedman's Columbia Heights garage in late September for a one-on-one turning session.

This hands-on session had no fixed agenda, but rather, was geared to allowing new woodturners a chance to pick their own projects and pair with an experienced turner who could offer help. Some chose to turn their first bowls, another tried his hand at small, lidded boxes while others gained valuable experience sharpening their tools.

Participating in this session were Bill Klopp, Harvey Koenig, Dodie Bemrick, Irv Swanson, Steve Wilson, Gregg Herreid and Don McCay. Along with Steve Tiedman, the helpers included Bruce Arones, John Nicholson, Duane Gemelke, Dave Carley and Chuck Bjorgen.

Wisconsite Bill Klopp said he learned some good, basic principles along with sharpening techniques. According to Klopp, "the size of the group was perfect, everyone helping each other, even people turning around me giving advice. I will definitely participate in future group sessions, and when I get better I may hold one in my shop (if you guys can handle coming to Packer country)."

"Duane Gemelke helped me all morning, along with some input from Steve Tiedman and John Nicholson. I'd just like to add that I really enjoy being part of the group. A nice bunch of guys who accept you for what you are and want to help you learn and have fun doing it. My thanks to the club for this session."

Harvey Koenig said he "learned new skills and got a



lot of good advice from more advanced turners on the use of my tools and on working with different kinds of wood.”

While not a new turner, Dodie Bemrick said she never had the courage to make a bowl. Working with club president Bruce Arones, she started and completed her first bowl with “Bruce guiding me through the first cut to the last. I think I have lost my fear of making a mess of it, thanks to Bruce.”

“How did you know I was interested in making boxes?” asked a pleased Irv Swanson. Before the session was over, Irv had completed two basic boxes in cherry and was on his way to making a third in walnut when the session ended. “I made four more boxes right away when I got home,” he told this writer.

According to Gregg Herreid, “It was much easier to learn there, as someone could just walk over and start doing things right and with explanations yet.



One lesson I learned was to be much more delicate with my cuts and also that my tools still are far from optimum (grind and such).”

“So when I got back home there was an old piece of punky, crotch cherry waiting. I stuck it on the lathe and got into all kinds of trouble, but then there was no one here to shout to for help!”

Steve Wilson said he learned more about bowl turning, design, and turning natural edge bowls. He would like to see a couple other themes for the hands-on sessions,

(Continued on page 6)



Photos by Chuck Bjorgen, unless otherwise noted

1. The session participants, left to right: Irv Swanson, Chuck Bjorgen, Gregg Herreid, Steve Tiedman, Don McCay, Dodie Bemrick, Harvey Koenig, Bill Klopp, Steve Wilson, Bruce Arones, and Dave Carley. Photo by John Nicholson
2. Steve Tiedman, left, offered his thoughts to Harvey Koenig on how to approach his project.
3. Duane Gemelke offered suggestions to Bill Klopp.
4. As Dodie Bemrick, left, turned her first bowl under the watchful eye of club president Bruce Arones, Dave Carley, right, found time to turn a delicate goblet on one of the club's Jet mini lathes.
5. Irv Swanson started the hollowing of one of the two cherry boxes he made during the session.
6. An assortment of completed turnings was displayed among the shavings resulting from the September small group session at Steve Tiedman's shop.

(Continued from page 5)

one of which could be “proper chainsaw technique and how to safely cut up trees for turning stock.”

Don McCay worked with Duane Gemelke and said he “learned some new offset techniques. I think we have a great club with exceptional leadership. The group sessions are a great way for us new to the craft to learn from experienced turners. The camaraderie is also very enjoyable.”

MWA members can look for more small group hands-on turning sessions in the coming year. You don't need to be an experienced turner to host a session and you can decide how many participants you can accommodate, depending on your shop space. Also remember that the club now owns five lathes that can be made available for these sessions. Contact Chuck Bjorgen for details and help.

Photos by Chuck Bjorgen

Upper right: Steve Wilson put some finishing touches on a small natural-edged bowl he turned during the session.

Lower right: Club vice-president John Nicholson, right, worked with Don McCay, left, and Gregg Herreid.



THANKS!

by Steve Tiedman

I would like to take this opportunity to thank everyone who attended the hands-on turning session at my home shop on September 28, both the students for their enthusiasm and the teachers for their willingness to share their knowledge for a few hours. I think by the time we finished up we all came away richer for the experience.

I'm really happy with how the event turned out, 8 lathes humming along. (9 when you count me firing up my big Vicmarc. It was like a production shop in there!) Those were small pieces of wood being turned, but boy, we filled an entire large garbage bag with shavings.

This is the second time I've hosted a hands-on session for our club. If you haven't been involved with a hands-on session, either as a guest or host, I'd encourage you to do so. All we need is a willing club member with some space in their shop, and Chuck Bjorgen will coordinate all the details. You don't have to be highly knowledgeable of turning to host a session, only willing to open your shop to some fellow clubmates, as many as you can handle, be it 2 or 12.

Thanks again.

(Continued from page 3)

kept our interest throughout the day. Not only did he clearly explain what he was doing, he made us laugh as well (good stories). He demonstrated an oil lamp, a birdhouse ornament, an acorn-shaped birdhouse ornament, his signature Christmas ornament, a ring holder, and a lidded hollow vessel. Even during our lunch break Bob couldn't stay off the lathe ... he turned a tool handle for an interested group of members. Bob makes some of his own tools, and had brought pieces of HSS for making small skews, which he explained how to make.

Anyone who was not able to attend the meeting should rent the video that was taped during the demo! You'll get instruction in making several wonderful gifts ... perfect for the upcoming holidays!

Our Show 'n Tell displays are always impressive, and the October meeting was no exception. The pieces on display were:

- ◆ A hollow vessel by Pete Onstad, turned from Box Elder
- ◆ A lidded box by Richard Fulner
- ◆ A natural-edged Manzanita Root bowl; and a Zebrawood bowl by Jack Frost
- ◆ A Black Walnut footed bowl by Chuck Pitschka
- ◆ Two Christmas ornaments turned "inside-out" by Linda Ferber
- ◆ A Walnut and Maple jewelry holder; and a Mesquite and Maple vessel by Brian Grobe



Above: Show 'n Tell items, including a birdhouse ornament, a Christmas ornament and a confetti lamp turned by Bob during the demo.
Photo by John Nicholson

Below: The audience watches Bob's detail work on the big screen.

Lower right: Enjoying Bob's presentation

Photos by Cathy Nicholson



Mark these dates on your Calendar

*Activities you don't
want to miss!*

October 2002

Sun	Mon	Tue	Wed	Thu	Fri	Sat
		1	2	3	4	5
6	7	8	9	10	11	12
13	14	15	16	17	18	19
20	21	22	23	24	25	26
27	28	29	30	31		

November 2002

Sun	Mon	Tue	Wed	Thu	Fri	Sat
					1	2
3	4	5	6	7	8	9
10	11	12	13	14	15	16
17	18	19	20	21	22	23
24	25	26	27	28	29	30

December 2002

Sun	Mon	Tue	Wed	Thu	Fri	Sat
1	2	3	4	5	6	7
8	9	10	11	12	13	14
15	16	17	18	19	20	21
22	23	24	25	26	27	28
29	30	31				

January 2003

Sun	Mon	Tue	Wed	Thu	Fri	Sat
			1	2	3	4
5	6	7	8	9	10	11
12	13	14	15	16	17	18
19	20	21	22	23	24	25
26	27	28	29	30	31	

February 2003

Sun	Mon	Tue	Wed	Thu	Fri	Sat
						1
2	3	4	5	6	7	8
9	10	11	12	13	14	15
16	17	18	19	20	21	22
23	24	25	26	27	28	

March 2003

Sun	Mon	Tue	Wed	Thu	Fri	Sat
						1
2	3	4	5	6	7	8
9	10	11	12	13	14	15
16	17	18	19	20	21	22
23	24	25	26	27	28	29
30	31					

October

♦ **2nd**—"The Elements", an inaugural portfolio exhibit by the Northern Printmakers Alliance, opened at the Ripple River Gallery. Reception was held October 5th.

♦ **5th - 6th**—Fall Colors & Apples Open House at the Ripple River Gallery.

♦ **11th**—Bob Rosand gave an evening Hands-on session for seven people. See article on page 10.

♦ **12th**—Our membership meeting consisted of an all-day demonstration by well known turner Bob Rosand. See article on page 3.

November

♦ **6th**—The board of Directors met Wednesday, at 6:30, at Roger Ronson's home in Savage.

♦ **12th**—The membership meeting was held at Roseville Area High School from 6:00—9:00 PM. Bowl Savers were discussed and demonstrated; see article on page 11.

December

♦ **10th**—Our Annual Holiday Party will be held at the AAW office in Shoreview. See the front and opposite page for details. Hope you're working on blocks to donate to Toys For Tots, a turned gift for the gift exchange, and an entry for the Holiday Ornament or Decoration challenge!! Lots to do.

January 2003

♦ **8th**—The board of Directors will meet Wednesday, at 6:30, at the AAW office in Shoreview. Any member with something they would like brought before the BOD should contact any board member listed in the newsletter, and it will be put on the agenda.

♦ **14th**—Our membership meeting will feature a presentation by professional turner, Alan Lacer. See page 3 for details and directions.



Directions to Ripple River Gallery:

from Deerwood: Five miles south on Hwy. 6, then 3 miles east of Ruttger's Bay Lake Lodge on County Road 14 to Partridge Avenue (formerly County Line Road), then north 1/4 mile on Partridge Avenue.

from Aitkin: South on Hwy. 169 to Bennettville, then 3.2 miles west on County Road 11 to Partridge Ave.

MWA HOLIDAY PARTY 2002

(Continued from page 1)

ship cards with paid 2003 membership! (Pay money, get a card ... what could be better?)

Check out all these fantastic activities ... it'll be a great party!

Food: Bring pot luck hors d'oeuvres and deserts to share. Refreshments will be served throughout the evening. Beverages will be provided.

Door Prizes: All those in attendance will be eligible to win one of more than \$300 worth of gift certificates, donated by Rockler's and Craft Supplies, to the MWA for this event. Be sure to sign up as you come in the door!

Special raffle: Pay \$1 per ticket for a chance to win one of the items turned by Soren Berger at our May meeting or by Bob Rosand at our October meeting! The more tickets you buy, the more chances you have!!

Turning Challenge: Bring a **holiday ornament or decoration** for the challenge and be eligible to win a great looking certificate. The awards will be based on the votes of all attendees. Bring your entries and be prepared for some very creative competition! No prizes but great recognition. Certificates will be awarded for 1st, 2nd, 3rd, and 4th places.

Toys For Tots, block sets: We are requesting that each member make as many blocks as they can to be included in the block sets which will be donated to Toys for Tots. The block sets will be assembled at the party. (Plans were in the October newsletter.) Word has it that 12 bags will be sewn, so we'll need lots of blocks! Help spread the cheer ... make some blocks.

Gift Exchange: Bring an unwrapped turned piece for the Gift Exchange. Everyone who brings a turned piece for the Gift Exchange will receive one in return. You'll have an opportunity to Show 'n Tell about your turning as it goes to the recipient.

Club Activities: We will have wood sealer sales, the library, and Show 'n Tell (but no wood raffle)!

Elections: An election for officers and other board members of the Minnesota Woodturners Association will be held. Two board positions, the Club Librarian, currently held by Linda Ferber, and an At-Large position, held by Chuck Bjorgen, have one year remaining on their terms.

The following slate of candidates is offered, but nominations from the floor will also be accepted before voting takes place:

President: Bruce Arones

Vice-president: John Nicholson

Secretary: Open

Treasurer/Membership: Ron Meilahn

Newsletter Editor: Cathy Nicholson

Newsletter Mailings: John Ratliff

Program Director: Open

Members-At-Large: Don Wattenhofer, Tom Shields, Jim Blare, Rod Olson, Jim Jacobs

Any questions? Contact the following: Bruce Arones at 651-433-5364, barones@minnmicro.com or Ron Meilahn at 763-862-2100, ronmeilahn@usfamily.net, or John Nicholson at 763-785-1751, jc.nicholson@usfamily.net

Friday Night With Bob Rosand

by Steve Tiedman

On Friday evening, October 11, some of the MWA club members took the opportunity to spend a few hours turning under the watchful eye of professional woodturner Bob Rosand. The Bloomington Woodcraft store was generous enough to allow the use of their workshop for this event.

In attendance that evening were: Sheila Martin, Linda Ferber, Tom Homa, Don Soll, Bob Hanson, Tim Heil, and Don McCay. Lending a helpful hand were Hal Malmlov (who opened his home to Bob Friday night) and myself.

Bob's projects for the students were candleholders, either for small tea lights or for small oil lamp candles. He first drew the crowd to his lathe to show how he goes through the operation of turning a candle holder: from stock preparation to mounting a glue block, shaping the wood, hollowing for the candle, surface embellishment, sanding and finishing, and jam chucking to finish the bottom. He did make a bit of fun of the situation, explaining that his way of doing things is not necessarily the same as other turners, professionals or amateurs. One time he even said that if you have the opportunity to take a class from professional turner David Ellsworth (both of these pro's live in Pennsylvania), be sure to tell him that, whatever he's showing you, "that's not how Rosand does it"! (All with a

wink of the eye, of course.)

Then the students took to their lathes for an evening of turning. Bob spent the evening making the rounds to each lathe to check on progress and lend assistance as needed.

More than once you heard someone say "Oh, that's how you do that", whether it was for tool presentation, sharpen-

ing, or design. In the end, everyone came away feeling a bit more comfortable in how they were doing things and what it was they needed to do to become a more confident woodturner.

Many thanks to Bob Rosand for coming to our area to put on these demonstrations, and for that terrific carrot cake!



Above: Bob helping Sheila Martin explore the possibilities of her turning.

Below, from left to right: Bob Rosand, Sheila Martin, Tom Homa, and Don McCay working on their projects.

Photos by Steve Tiedman



Bowl Saver Systems the Topic of November's Meeting

by Cathy Nicholson



Bruce Arones explains the Oneway bowl saver set-up

Photo by Chuck Bjorgen



Roger Ronsen demonstrates the McNaughton bowl saver Photo by Chuck Bjorgen

WOW! Fifty people attended our November meeting at the Roseville Area High School! We had planned on having two demonstrations of Bowl Saver systems, the Oneway and the McNaughton. Unfortunately the Oneway system didn't fit any of the lathes we had available, so Bruce Arones showed the instructional video that came with his system. Prior to running the video, Bruce showed the components and explained how they worked. He also had samples of bowl blanks that had been cut with his Oneway bowl saver.

After Bruce's presentation, Roger Ronsen demonstrated the McNaughton system. Both systems allow you to cut the blanks for nesting bowls, but their set-up is different. The video supplied a good picture of how the Oneway system works, but it was really nice to watch Roger actually cut the bowls out with his McNaughton system. (Thanks Roger!) If you weren't able to attend the meeting and are interested in a bowl saver, be sure and talk to Roger or Bruce at one of our meetings. To continue the bowl-making theme you may want to check out some of the club's videos on that subject—for a current list, see page 15.

Dave Carley has completed the foundation for our club website and had his laptop set up

throughout the meeting, giving people a chance to view the site, www.mnwoodturners.com.

With the large attendance came one of our biggest ever Show 'n Tell displays – lots of very inspirational work! Duane Gemelke facilitated the Show 'n Tell by holding up each piece and encouraging its turner to tell about the woods used, problems encountered or special techniques used in the creation of each piece.

Show 'n Tell Recap

Bob Bovine - The glue-up of a bowl he plans to make soon; the bowl is Maple with a Walnut moose inlay. Bob also brought his "Zebra Bowl", made by gluing up 167 boards of Walnut and Maple prior to turning; the finished bowl stands 14" high, has a 24" diameter and weighs 39 pounds! And a bowl turned by his granddaughter, his wife and himself from Walnut and 2x4s—a multi-generational family project.

Don Wattenhoffer – A very thin "table goblet" made from Red Oak.

Tom Shields – A salad serving bowl and four salad bowls made from Myrtlewood.

Zack (one of Wally Jacobson's high school students) – A Buckthorn bowl, which he turned green.

John Engstrom – A hollow vessel, with a coin

(Continued on page 12)

(Continued from page 11)

trapped inside, turned from Box Elder. A Sumac box, which started to be a finned bowl, but when one of the fins chipped off, John modified it to accept a lid after getting the idea from watching Bob Rosand's demo.

Linda Ferber – A Poplar bowl. Linda patched a hole (caused by a knot) in the bottom and burned in the “enjoy life” slogan—a very creative fix!

Chuck Bjorgen – A Silver Maple bowl turned from a piece of his neighbor's tree; and an Osage Orange bowl.

David Bovee – A large bowl turned from a big (Maple?) burl.

Dave Carley – A very delicate goblet, turned from Crabapple at Steve Tiedman's hands-on session. An Ash bowl with some very attractive bark inclusions.

Dale Martin – Three bowls: a California Maple bowl inlaid with black stone and abalone shells; a Black Walnut bowl with a carved maple leaf design; and a gorgeous Purple-heart bowl.

Wayne Kiefer – A bowl turned from spalted Hackberry, and a Rosewood bowl that had an unexpected surprise inside: the head of a deer was clearly visible in the grain pattern on the bowl's interior!

Todd Schweim – A Mesquite bowl, with an inlay of twine, and a burned interior—really beautiful!

Jim Jacobs – The Fingernail Grinding Jig he made.

Herm Fessler – A Chalice (or lidded box) turned from Red Cedar—the first ever lidded box Herm has turned! He also brought a beautiful segmented

vessel; the plans came from Craft Supplies, but Herm didn't agree with their instructions so he did it his way and the vessel was gorgeous (as usual)! 660 plus pieces, of various woods, went into the making of the vessel.

Carl Sundeen – Brought pictures of collections plates turned by Jimmy Carter; Carl saw the actual plates on a recent visit to the South.

Duane Gemelke – A Butternut wall sculpture, created by turning beads and coves into the face of a disk shape. After turning, Duane cuts it into tapered pieces on the bandsaw,

joints the edges, then glues the pieces (28 of them) back together in his chosen pattern.

Cathy Nicholson – A birdhouse ornament inspired by the Bob Rosand demo, turned from Maple and Bacote. The finials and perch were turned from Maple, then painted with India ink to simulate Ebony.



Photos

Top:
Show 'n Tell items by Don Wattenhofer and Herm Fessler

Photo by John Nicholson

Middle:
Duane Gemelke describes the process for making one of his turned, cut, and glued wall sculptures

Photo by Chuck Bjorgen

Bottom:
Show 'n Tell display

Photo by John Nicholson



Hands-on With Brian Grobe

by Chuck Bjorgen

As Brian Grobe planned for his small-group turning session, his goal was to show his participants how to use jam chucks for finishing the foot of a turned lidded box. When Linda Ferber, Eagan, John Kempkes, Hastings, and Marvin Grabau, Hudson, Wis., arrived at his basement shop on Oct. 26, the three MWA members told him they'd prefer to work on platters or bowls. No problem, said Brian. "I just happened to have some bowl blanks here."

So with varying degrees of success, the three participants finished turning the rough-turned bowl blanks provided by Brian, learned about making jam chucks to reverse turn their bowls,



Above: Brian Grobe gives bowl-turning advice to Linda Ferber

Photos by Chuck Bjorgen

Below: John Kempkes, back, and Marvin Grabau, front, work on their bowls



heard Brian's philosophy about tool sharpening and dust control, power sanding, and watched Brian decorate a newly turned top with water colors.

Brian does his own turning on a Vicmarc VL200 lathe that he bought last year. Linda chose that for her work, while John and Marvin settled in front of the two club Jet mini lathes that were provided for this session. During the session, Brian rotated among the three offering suggestions and inspecting their tools for sharpness.

Brian's sharpening setup is basic. His grinder sits at the tailstock end of his lathe. He does much of his sharpening with a home made tool rest and uses the Sorby jig to form the fingernail profile on his gouges.

He also likes to do his finishing cuts on bowls with gouges rather than scrapers, believing he gets a better finish that requires less sanding. But when sanding becomes necessary, Brian likes to use an old power drill with a velcro pad

(Continued on page 14)

(Continued from page 13)

and wavy-edged sanding disks. He let the three turners use his sanding system for their projects.

John chose to turn his bowl into a super thin project but when he reversed it into a jam chuck to finish the foot, it flexed to the point where it literally came apart in several pieces. "Although my bowl didn't survive, it was a good learning experience," said John. "I'd turned some bowls before but Brian helped with my technique and discussed how to deal with end grain. He also added a couple of tools to the "gotta have" list."

Linda's turning was more successful although at the last moment a small knot popped loose leaving a hole in the bottom of the bowl. Undaunted, Linda took the bowl home, repaired the defect and showed off her project at the MWA November meeting during the club's Show 'n Tell session.

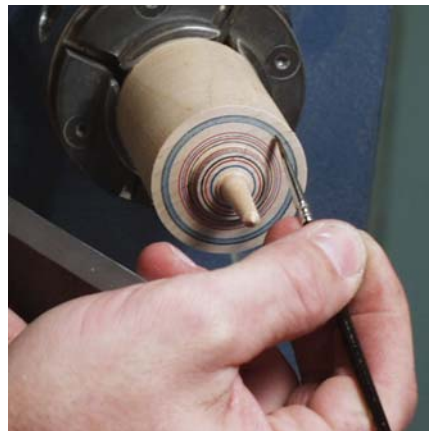
Marvin Grabau was able to complete his project without any problems. "The company was great," said Marvin, "and it is always fun to learn a new technique. I had turned a few bowls, but not using this method. Brian was very helpful and willing to assist any way he could. I think the hands on sessions are great and should be continued. For me, I like the idea of getting together with other turners on a regular basis just for the ideas and motivation factor."

Brian closed out the session by demonstrating how he makes and decorates small tops. Using ordinary water colors, he applies color with a fairly dry brush on the piece while it is turning on the lathe.

Linda, who is also a board member and the club librarian, summed

up the session with these thoughts: "One of the greatest benefits of being a member of MWA is the small group sessions." Among the benefits, she cited one on one training, the ability to see how others have set up their shops, to meet other members in smaller groups and the chance to test equipment before you make a purchase.

MWA members can look forward to more of these sessions in the coming year.



Above: Brian Grobe demonstrates how he decorates tops while they're on the lathe (and only partially turned).

Below right: Brian's stockpile of bowl blanks, waiting to become finished bowls.

Below left: A product of the session ... finished bowl sitting on the lathe.

All photos by Chuck Bjorgen



For Sale

C&G Trimmer Saw

Small blade, accurate slide
and fixed arbor.

\$85

Old Shawver lathe

12x30 (50" bed)

\$115

Call Gregg Herreid

763-441-6882

Australian Lathe

27" x 40" capacities

\$1100

Call Alan Lacer

715-425-9669

Check this OUT!

The Club's video selection continues to grow. The next meeting you attend please stop and check out the selection. There are topics from turning green wood, coloring, sharpening and much more. I have listed the current selection of videos on bowls.

Reminder to please return videos via the mail if you are not able to attend the next meeting.

Library ID	Presentor	Title	Club	Commercial
4	John Jordon	Bowl Turning		Yes
19	Del Stubbs	Bowl Turning		Yes
24	Resche	Finishing, Burl Bowl Demo	Yes	
32	Mike Hoslaluk	Hoslaluk Demo Part B Bowls 03-94	Yes	
37	Mike Darlow	Mike Darlow No. 3 Faceplate Bowls		Yes
42	Paul Kachlemyer	Kachlemyer Demo, Bowls	Yes	
85	Chris Stott	Turning Bowls		Yes
101	Dennis White	Turning Bowls		Yes
117	Raffan	A Basic Bowl on the Lathe		Yes

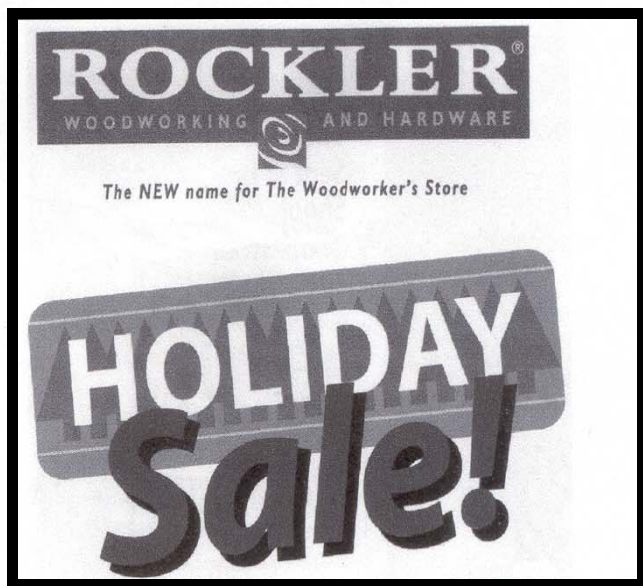
www.mnwoodturners.com

That's right! Thanks to member **Dave Carley**, the club now has a website! Check it out at: www.mnwoodturners.com. The site is a work-in-progress, but already contains some items of interest:

- ◆ The club calendar (in case you misplace your newsletter and need to check what's coming up)
- ◆ Past newsletters that you can view or download
- ◆ Links to sites of interest to woodturners

Dave has plans to add to the site, including a gallery of members' work. Any ideas you have for website content should be submitted for discussion by the board of directors.

Thanks for the great site Dave!!



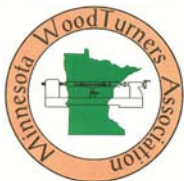
Minneapolis • 3025 Lyndale Ave. S. • (612) 822-3338
Burnsville • 2020 W. Cty Rd. 42 • (952) 892-7999
Maplewood • 1935 Beam Ave. • (651) 773-5285
Minnetonka • 12995 Ridgedale Dr. • (952) 542-0111

**Over 100
Species
of Wood in Stock!**

**Turning Blanks
20% off
w/ this ad**

On Sale
November 29th
Thru
December 24th, 2002

See the largest selection
of domestic and exotic
lumber at the
**Maplewood
Store**
(651) 773-5285



Minnesota Woodturners Assn.
13968 Alder Street NW.
Andover, MN 55304

First-Class Mail