



Minnesota Wood Turners Association

An Affiliated Chapter of the American Assn. of Woodturners

January 1998

Volume 12, Issue 1

Editor's Corner

Remember to send in your 1998 membership check. Look at the mailing label on this letter; "**Curr**" means you are current and "**Exp**" means you are late. This will be your last newsletter until you become current.

The NORTHERN WOODS EXHIBITION

Presented by the
Minnesota Woodworkers Guild
Article by Mel Turcanik

This year marked the 15th annual Northern Woods exhibition. Held between October 16-19, 1997 at Southdale Center, Edina, MN, this year's exhibition was one of the best in years. Over 40 craftspeople submitted more than 70 pieces of work, the majority cataloged in an attractive publication. The entries ranged from a real supersonic rocket to miniscule carved and painted fantasy characters. The range of work was truly amazing with awards going to both very traditional pieces and far-out experimental pieces.

The following Minnesota Woodturners had entries in the exhibition:

Don Wattenhofer
Mel Turcanik
Keith Trier
Craig Lossing
Alan Lacer
Richard Gotz
Jim Jacobs

Craig Lossing came away with the "Best Turning" Award for "Suspended Vessel", a hollow maple burl vessel resting in the knot of a piece of cocobolo. Alan Lacer was awarded "Most Daring" for his warped madrone burl goblet titled "Black Rose". Richard Gotz was the "Top Drawer" winner for a Shaker sewing table. Congratulations to both the winners and entrants for participating in a spectacular show.

(My apologies for missing any members who may have joined after our list was published or who didn't make it into the catalog. I didn't realize I was writing this until much after the fact. Next year I'll try to pay attention to what's going on.)

Meeting Notes of 11/8/97 @ John Berglunds'

Before John demonstrated a multi-axis turning for us, Ron Meilahn told us of some safety issues that came up in his shop.

When using his table saw to

cut a plywood panel, the panel accidentally lifted up and came away from the fence and down on the blade. This resulted in a kickback that could have resulted in serious injury. Be sure to always use hold down feather boards or other hold down devices when cutting panels. Ron thought that raising the blade would help keep the piece against the fence, but from experience I can say that it won't, and furthermore, raising the blade creates more chip out on the bottom of the panel. Also, be sure you are in a position clear of potential kick-back **BEFORE** you start a cut.

Ron also accidentally dropped the new tool rest on his grinder into the wheel when attempting to adjust it with the grinder running. I saw his set-up after this happened and it was possible for the tool rest to cam past the wheel and put excessive force on the wheel and perhaps cause it to shatter in the process. Always shut the grinder off before making adjustments.

Thanks to Ron for sharing these experiences. Fortunately, they were only embarrassing and not injurious.

Cont'd on Page 2

John demonstrated making a bowl form with a rim turned on a different axis. (See Fig 1 & 2)

First, the complete log section was mounted on the lathe between centers using a spur center mounted in a recess bored into the end of the log. This recess is a safety feature that prevents the log from flying off the lathe in case something goes wrong. The log

MWA Board

President:

Mel Turcanik (507) 634-7570

Vice President:

Don Wattenhofer (612) 572-1045

Treasurer:

Ron Meilahn (612) 633-8902

Program Director:

Ed Johnson (612) 224-4194

Newsletter Mailing:

John Ratliff (612) 770-6471

Librarian:

Duane Gemelke (612) 566-8516

Secretary:

Gordon Miller (612) 484-5052

Newsletter Editor/Membership:

Don Robinson (612) 441-8207

e-mail: dmrob@worldnet.att.net

was turned to the shape of the edge of the rim when the bowl is viewed from above. (Fig 1)

The log was then bandsawed down the center of the pith to form two bowl blanks.

Next, the blank was mounted on a screw chuck, the flat bandsawed side toward the headstock. The outside of the bowl was turned, leaving the rim with the shape determined by the first turning. A spigot was turned on the bottom to remount the piece in a chuck. (fig 2)

Finally the piece was remounted in the Nova chuck and the inside turned. The top surface of the rim was also turned smooth to remove the band saw marks and create an attractive cross section.

Once the turning of the bowl was done, and the foot parted

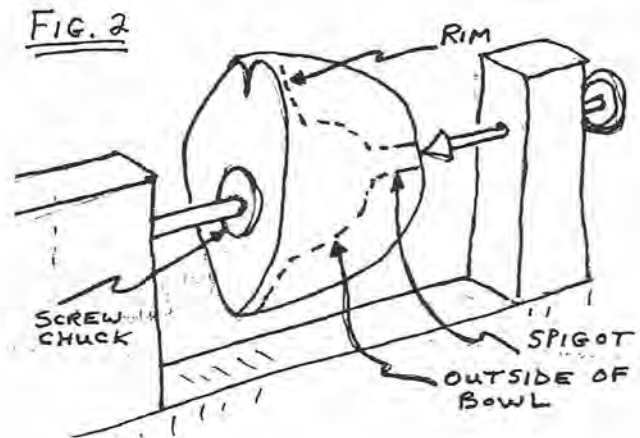
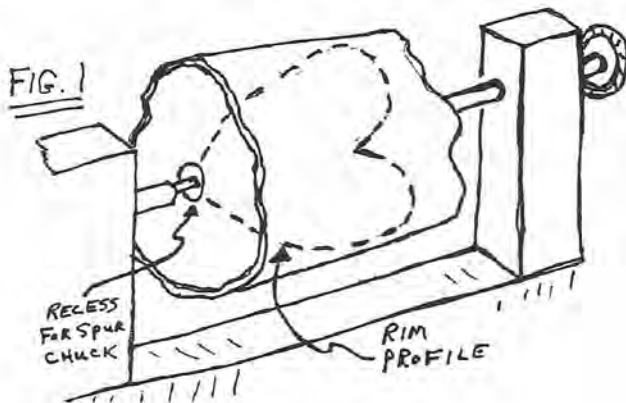
off, the bowl was reverse chucked using a convex shape covered with foam on the headstock, the piece held in place by the tail stock. This allows the finish turning of the underside of the foot.

John allows the piece to dry over a period of several weeks then sands as necessary. John uses the Merit disc system for initial sanding. He then switches to foam pads made from used Merit discs and 1" (or less) upholstery foam and garnet paper. Sanding progresses 120 grit, 180 grit and finally to 220 grit.

The final finish is General Finishes Armor Seal.

Thank you John, for sharing your shop and expertise with us.

Reported by Mel Turcanik



Past Meetings:

Waterbury tour in November:

At the request of the Waterburys our club was able to further the cause of promoting woodturning as an art form (see copy of letter to the AAW below).

Once again I would like to emphasize how inspiring it can be to view a large collection of beautiful turnings all in one evening. I can now appreciate the comments from some of our Woodturners when they rave about their trips to national conventions.

Christmas party in December:

Speaking of fine quality workmanship, there was certainly a big display of various turnings on the gift exchange table and on the tournament display rack. There were thirty six people present and the general comment made by many was the tremendous talent of many of our turners.

Duane Gemelke once again put together a fine assortment of refreshments.

The evening started with a social hour where everyone could eat, drink and look over the displayed turnings. A short business meeting was held and the slate of board members listed in the December newsletter was duly accepted.

The gift swap was received well. It is a good way to force us to turn out some good work.

Those of you who entered the ornament challenge displayed some very beautiful and useful items. It was indeed hard to choose which ornament to put into each category on the ballot but some how we did. Merrily and Larry Heyn sorted and tallied the ballots and announced the winners in each category. The winners were:

- Most Creative - Dave Bovee
- Most Technical - Dave Bovee
- Best Finish - Ron Meilahn
- Most Whimsical -
Todd Schweim
- Most Colorful - Art Nelson
- Smallest - Ken Tempero
- Largest - Rod Olson

Note: A special thanks goes to Merrily Heyn for her calligraphy work on the certificates for the winners.

In closing I want to thank Ron Meilahn for his work on prizes. Also many thanks to the following stores for their donations of prizes for the raffle:

The Woodworkers Store -
-(2) \$25 Gift Certificates
-Discounts on other gifts

Woodcrafters -
-\$25 Gift Certificate
-Henry Taylor Scraper
-Discounts on other gifts

Shaw Lumber -
-\$25 Gift Certificate

Craft Supply Mail Order -
-\$100 toward prize fund

Mel Turcanik, President Minnesota Woodturners Assn.
P.O. Pox 427
Kasson, MN 55944
(507)634-7570

November 13, 1997

Mary Lacer, Administrator
American Association of Woodturners
3200 Lexington Ave.
Shoreview, MN 55126

Dear Mary,

On November 11, 1997, our club held a meeting at the home of Dave and Ruth Waterbury to view their diverse collection of turnings. At their suggestion, a collection was taken to benefit the Educational Opportunity Fund of the AAW.

Thanks to their suggestion and hospitality, and the generosity of the members of the Minnesota Woodturners Association, we are pleased to present the enclosed donation for \$100.

Sincerely,

Mel Turcanik

Future Meetings:

Tues., Jan. 13, 1998 @ 6:30 PM:

Mel Turcanik will demonstrate some techniques of sanding and preparing your work for finishing. If time allows he will also have some hints on successful finishing.

The meeting will be at Tim Mannings house (shop is in back yard). Bring a folding chair.

Directions:

1100 44 ½ Ave. NE
Columbia Heights
About 1 mi. So. of I 694 and
2 blocks E. of Central Ave.
- Take Central to 45th. Turn
Easton 45th, go 1 block then go
So. 1 short block to 44 ½. Turn
E. to Tim's house (#1100)

Feb. - Meeting date not available.

There will be a slide presentation by Alan Lacer showing traditional Japanese methods of turning. This should give us an excellent chance to observe new techniques. **The exact time and date will be printed in the February newsletter.**

March - Date not available.

This meeting will be on a Saturday and will feature Judy Ditman. Judy is a well known professional turner specializing in jewelry and lidded boxes. She will demonstrate how she designs her projects and explain how she goes about problem solving to make her turning more efficient.

This session will be a 5 hour demo of her specialties. There will be a charge and also a limit of 30 attendees. I expect this to be a very interesting demo.

April - Date not yet available.

Sat., May 9 @ Woodcrafters

Bonnie Klein, a professional turner, will give a 5 hour demonstration. If you have viewed any of her tapes in our library you know this will be a very interesting session. There will be a charge and seating is limited to 30 attendees.

Bonnie will also be conducting a class on screw making for a limited number of students on May 10th. Contact the Woodcrafters store for details if you are interested.



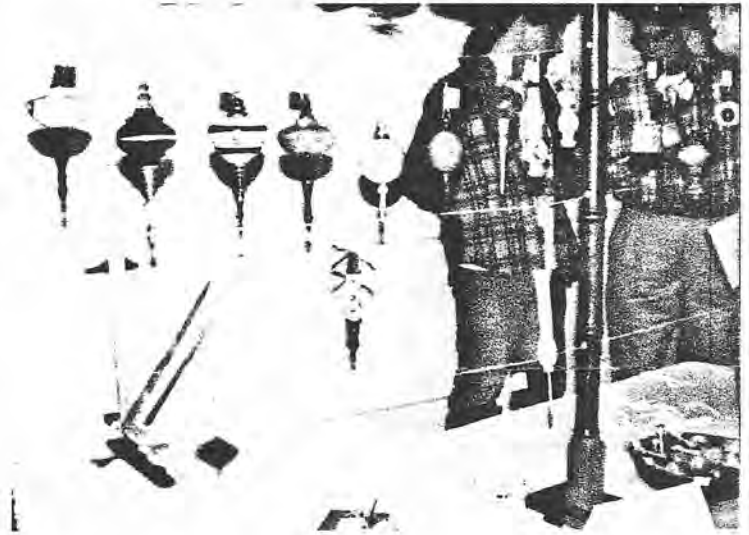
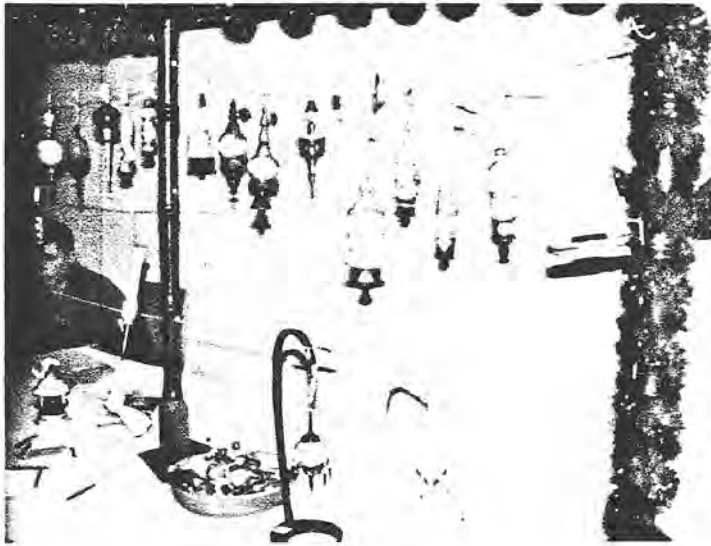
As you can see, the balloting for the ornament challenge was serious business.



(Left) Ornament by Dave Bovee
This ornament is suspended from its own free-standing holder which was made from red cedar. The picture at left below shows the entire piece on the table. Very impressive !

(Below - left & right)

You can see the large collection of ornaments that were submitted in the challenge. There was a wide array of woods used as well as different sizes and shapes. Many were varnished and some were hand painted with images depicting Christmas or winter scenes.



(Left) This is a picture of the gift-exchange table. As you can see there were turnings ranging in size from palm-of-the-hand ornaments to large bowls. Everyone was pleased with their new gifts. Since this is a tradition for our club it wouldn't hurt to start turning something soon for next year's party. Remember, you are only eligible for the prize drawing if you participate in the gift swap.

CORRECTION:

The following article is reprinted from the November newsletter in its entirety with the corrected paragraphs highlighted in bold print.

As we come to the last newsletter of the year I will be saying goodbye as your Editor. As I had stated at last year's elections, I would carry on for one more year and then turn over the reins. The past year has gone quickly, as have the last three years that I have spent as Editor, Membership chair and list co-ordinator, sometimes meeting and agenda scheduler, etc. A lot of things have happened since that November meeting in 1994 when I questionably raised my hand to volunteer to maintain the membership list. We have had many things change in the last three years.

Some of the Achievements I am proud to have been a part of are as follows:

Wood Raffles: At almost every meeting that we have not had a professional demonstrator, our membership has been generous in bringing in wood pieces that they donate for the wood raffle. Almost everybody that buys a ticket goes home with at least one piece of wood they did not have before.

Challenges: We have had an Easter Egg challenge, Christmas ornament challenges and a Croquet mallet and Ball challenge with more to come in the future. This gives any member willing to participate a chance to pit their skills against other members and have a good time doing it with the chance that they will win a certificate of recognition. It promotes interaction among members as one of its many positive aspects.

Increased membership: Our membership has hit 100 or over the last 2 years, up from the 56 members we had in 1994. This is almost a doubling in size.

Newsletters: Newsletters have come out on a regular schedule with special editions as necessary, and members have been able to count on getting their newsletter in a timely manner. Articles have been included to cover the whole spectrum of woodturning from beginners to advanced turners to the professional side of woodturning. We have always asked for input and hopefully have provided an informative and entertaining newsletter.

Small Group Sessions: We have tried small groups meeting in members homes where there is a chance for more questions and the intimacy of a small group that is not available at our general meetings. These have proved to be popular and it seems like an afternoon flies by for both the **host and attending members. More information can be shared in a smaller group and this process also serves as a feedback mechanism for our general meetings.**

Please give all of the help and cooperation you can to Don Robinson as he takes over the duties of editor. Don will do a great job and can use your input for stories and information for the newsletter. If every member would consider volunteering for one event a year or one job a year, it would make it easier for your Board of Directors and the membership as a whole. Only with your help and cooperation will we have a

successful organization that everybody can be proud of and have ownership in.

I can say that it has been a pleasure to work with all of you and I would like to specifically thank Ron Meilahn for his astute work as Treasurer and Volunteer Grandeur, who has actively recruited new members, to Duane Gemelke for his work as Librarian and helping with anything that was asked of him, always doing a superb job., and also to Paul Keller and Anderson Windows. Paul went out of his way to help in cutting costs of the newsletter and takes his personal time to get the newsletters copied at Anderson Windows, who graciously let Paul use their equipment for copying.

Many Happy Days of Turning to all of you.

Dave Schneider

FOR SALE

Classified Ads

Turning related ads are free to members. Commercial ads are billed at \$4 per month, per column inch. To place an ad, call Don Robinson 441-8207.

Ads will run one month unless you call to extend your ad each additional month. Submission deadline is the 1st of the month prior to publication. (ie. The 1st of Aug, Oct, Dec, Feb, Apr)

FOR SALE

Incredible Wood!

Fantastic Prices!

Bocote	\$11/bdft
Mex. Cocobolo	\$15/bdft
Guat. Cocobolo	\$24/bdft
Osage Orange	\$6/bdft
Paela	\$8/bdft
Granadillo	\$11/bdft
Ziricote	\$15/bdft
Lignum Vitae	Cheap
Chechen Burl	\$5/pound
Ramone Burl	\$5/pound
Paela Burl	\$7/pound
Ziricote Burl	\$5/pound

Other figured woods also available

Call Craig Lossing
(612) 785-4194

For Sale

Set your bevel grind angles accurately with steel gauges. Each gauge has two angles: 25°/30° and 35°/90°
Price - \$16 for two gauges

Exotic Hardwood 50% Off
6 Pieces 1 ½ x 22 in. long
Assorted types in bundle
Now \$12 per bundle

Call Chuck Pitschka
935-0660

Membership Application/Renewal MINNESOTA WOODTURNERS ASSOCIATION			
Name (Please Print)	Telephone #	Date	
Address	City	State	Zip Code
Dues are \$20 Yearly (starting in January) But \$10 after July 1 st (2 nd half year)		I would be willing to:	
Amount Enclosed: \$ _____		Help out at meetings	<input type="radio"/>
Please Check: Renewing Member <input type="radio"/> New Member <input type="radio"/>		Be on a planning committee	<input type="radio"/>
Are you a member of the AAW? Yes <input type="radio"/> No <input type="radio"/>		Help at demos/shows	<input type="radio"/>
You will receive all issues of the newsletter starting with the next mailing after you join along with a new members kit.		Serve on the Board	<input type="radio"/>
		Contribute to newsletter	<input type="radio"/>
		<hr/> Mail To: MN Woodturners Association c/o Ron Meilahn 1638 23 rd Ave NW New Brighton, MN 55112	

Minnesota Woodturners Association

Dedicated to providing education, information and an organization to those interested in woodturning.

The Minnesota Woodturners Association was formed in 1987 with approximately 25 charter members and now has about 100 members. The Association is non-profit and all work by members is done voluntarily.

The skill level of our members ranges from complete beginners to skilled professionals. Membership includes a few professionals but hobbyists make up the majority. The members live mostly in the Twin Cities metro area, however there are members in all areas of Minnesota stretching into western Wisconsin.

The Association normally schedules meetings once a month during fall, winter and spring of the year. (September thru May) The meetings are normally held on Tuesdays or Saturdays and the group meets in a different location each time. The meeting locations vary from members shops, educational associations, to the various woodworking stores located throughout the metro area.

The Newsletter is published bi-monthly, 5 times a year, excluding the months of July/August

The meetings usually consist of some sort of turning demonstration or related subject. The subjects of the demonstrations vary from basic techniques to advanced levels. The meetings are always open to questions from the members and we invite and encourage them to share their knowledge and skills freely. The Association tries to arrange at least one professional demonstration each year, with past professional demonstrators coming from all areas of the United States, England and as far away as Australia.



Editor
Minnesota Woodturners Assoc.
13400 Island View Dr
Elk River, MN 55330



First Class Mail