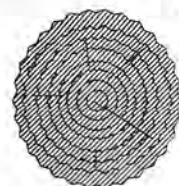




# Minnesota Wood Turners Association



An Affiliated Chapter of the American Association of Woodturners

**March 1997**

**Volume 11 Issue 2**

## Notes from the President

Our organization continues to grow. more and more people are getting "turned on" by the process of shaping wood on the lathe. We now have close to 100 members in our club. We grow because new people join and old members continue to participate. I wanted to share some of my thoughts and feelings about this club.

To keep this concise, I joined because a member actively encouraged me to do so. I kept coming back because I learned something at every meeting, or from each newsletter when I couldn't attend the meetings. I've volunteered to serve on the Board of Directors out of gratitude to all the members who have helped me learn how to make and sell my woodturnings. I hope that I can contribute sufficiently to repay my debt to all those who have given their time, skill, encouragement, and at times even their wood.

I am not an "Old Timer", I've only been turning occasionally for 5 or 6 years, intensively for maybe 2 years. Some hobbyist's spend as much time at the lathe as I do. My point is YOU DO NOT HAVE TO BE AN EXPERT TURNER TO HELP OUT! In fact., I've found that the fastest way to learn is to hang out with people who really know what

they are doing. It. provides an opportunity for asking questions and getting honest, in depth answers that cannot be found in workshops or more formal situations. So, even if you are new to this organization, if you have an organizational skill, like computer literacy, or you like to write, or have a family member who would like to be more involved in your passion, consider volunteering to help out with the newsletter, help out at the meetings etc. Feel free to contact me, Dave Schneider, or any Board member.

The Board has decided to make some changes this year to make your membership even more valuable. We will be starting our weekday meetings at 6:30 PM in order to have some time before our formal program for technical questions, glue sales and library transactions. The formal program will start promptly at 7:00 PM as always and I will do my best to make sure the program moves along

so that we have time at the end for more relaxed social interaction. We tried out the new agenda at the January meeting and the response we have received so far has been very positive.

Please continue to bring your work to "Show and Tell" which will be the last thing on the program after the main demonstration. It is an opportunity to show off to those who will really appreciate what you have done, and an opportunity to find out how to do it better, IF THAT IS WHAT YOU WANT. Nobody will critique your work unless you want to submit to creative criticism of technique or artistry, and ask for it. That is one thing I have found very comfortable about the people in this club... always encouraging, never demeaning.

All in all, I'm looking forward to another year of learning and progress for all of us.

*Mel Turcanik*

### **Inside....**

- 1..Notes from the President**
- 2..Know Your Minnesota Trees**
- 3..Membership List**
- 4..Library List of Videos for Member Checkout**
- 5..1997 MWA Discount List**
- 6..Past and Future Meetings**
- 7..MWA Suppliers List**

**MWA Board****President:**

Mel Turcanik (507) 634-7570

**Vice President:**

Don Wattenhofer (612) 572-1045

**Treasurer:**

Ron Meilahn (612) 633-8902

**Program Director:**

Ed Johnson (612) 224-4194

**Newsletter Mailing:**

John Ratliff (612) 770-6471

**Librarian:**

Duane Gemelke (612) 566-8516

**Member at Large:**

Hal Malmlov (612) 789-9616

**Secretary:**

John Engstrom (612) 475-0307

**Newsletter Editor/Membership:**

Dave Schneider (612) 934-4667

e-mail: DSchWdTurn@aol.com

**Treasurers Report: Ron Meilahn**

**Dec 1996 Year end Bank Balance  
(excluding 96 dues received)** \$578.

**1996 Activity thru 12/16/96****Income**

1996 Membership Dues (99 Paid)	\$1,800
Glue Sales (Net)	\$16
Meeting Wood Raffles (7 to date)	\$189
Personalized Name Tags @ \$2ea	\$34
Newsletter Advertising	\$14
Duluth Exhibit (27 entries)-final surplus	\$42
St Catharines Demo/Nthfld Art Show	\$230

**Total income** \$2,427.

**Expenses**

Professional Demo Costs (gain)	\$66
Library Tapes, VCR Rental, etc	(\$62)
Newsletter Printing, Postage	(\$411)
Tools	(\$-)
Annual Liability Insurance	(\$150)
Prizes, Board Mtgs, Misc postage, Kits	(\$1,319)

**Total Expenses** (\$1,876.)

**NET Operations YTD-FAV** \$661.

Membership Deposits-Library Tapes and 1997 dues	\$460
--	-------

**Checkbook Balance as of 12/16/96** \$1,529

**Member Helpline**

*Do you have a question or need help with a project or turning? The following members have volunteered to try and answer your questions, or get you pointed in the right direction for the answer.*

John Engstrom	(612) 475-0307
Jim Jacobs	(612) 437-2302
Ed Johnson	(612) 224-4194
John Magnussen	(612) 477-6294
Hal Malmlov	(612) 789-9616
Dave Schneider	(612) 934-4667
Don Wattenhofer	(612) 572-1045

If you would like to help out and have your name on this list, please call Dave Schneider @ (612) 934-4667

# Know Your Minnesota Trees

Information from Minnesota Division of Forestry

**COTTONWOOD**{*Populus deltoides*}

**FORM:** Height may reach 50' to 80', diameter 3" to over 4'; long pyramidal or crown; grows rapidly; therefore, often planted to furnish shade quickly.

**BARK:** Light gray on young trees and dark gray and rough on older trees.

**LEAF:** Alternate; broadly ovate or triangular, pointed, square at base; finely toothed or wavy on edges, 3" to 5" across each way; covered with soft white hairs on underside and flattened with slender stems from 2" to 3" long; winter buds covered with chestnut-brown, resinous scales



**FRUIT:** Two to four, valved, thin capsules borne on short stock in drooping "catkins"; seeds, when set free in late May or June, minute, pale, brownish-white, enclosed in cluster of white cottony hairs which carry them for long distances. There are two kinds of flowers borne separately on different trees: female trees throw cotton.

**RANGE:** Throughout Minnesota, often forming extensive groves; will grow on dry locations but makes most rapid progress on moist sites.

**WOOD:** Soft, light-weight; warps easily when drying and rots readily; used for boxes, fencing, fuel, rough lumber for inside use, making highgrade magazine paper for printing half-tone illustrations; grown extensively for windbreaks owing to rapid growth and adaptability to soil; usually propagated by "cuttings" or seedlings; found along water courses.

**BALM OF GILEAD  
(BALSAM POPLAR)**{*Populus balsamifera*}

**FORM:** May attain height of 50' to 80' and diameter of 1 1/2" to 3' or more; grows upright with narrow, straight top which later becomes somewhat broad.

**BARK:** Smooth, brown-gray color, deeply furrowed, gray-black color on old trunks.

**LEAF:** Ovate, long pointed, edges finely toothed, dark green and shiny above; pale and often rusty tinged beneath. Buds are large, pointed golden yellow resembling balsam, and covered generously with varnish-like resin or pitch; gives off strong, pungent aroma.



**FRUIT:** Small, cotton-like, easily carried by wind for long distances; appears in May or June.

**RANGE:** Found throughout northern part of state, along streams and edges of swamps or in other cool localities.

**WOOD:** Heavy when green, light when dry; soft, not very strong, close grained, light brown, sapwood white; used for pulp, boxes, packing cases and rough lumber, rots readily in contact with ground.

## Past Meetings

**Tuesday, January 14th, 1997** at Hennepin County South Vocational-Technical College. The meeting was opened by our new president, Mel Turcanik



**Al Gaskell**, above, gave a comprehensive talk on fasteners.

He talked about the cost effectiveness of manufacturing. Finishes are put on for corrosion prevention. Stainless steel is 5 to 10 times the cost of standard fasteners. He looks at screws as "miniature clamps". The point was made that a straight shank is better than a tapered shank as the tapered, when loosened a little bit loses a great portion of its' holding capacity whereas the straight shank does not suffer from that problem as it holds for the full length of the thread.

Mel Turcanik said a good source for square drive screws, tools etc is "McFeelys" @ 1-800-443-7937, P.O. Box 11169, Lynchburg, VA 24506.

**We** are going to try a new concept of Small Group Meetings, and the first will be held at Dave Schneiders on Saturday, January 25th.

### Tools Tricks, Tips

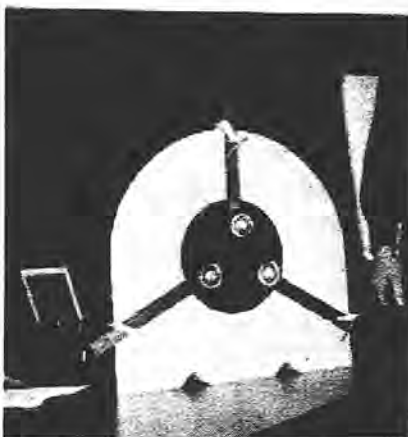
**Paul Keller** showed rust remover & preventative, homemade faceplates

**Don Wattenhofer** showed a very sturdy and well made aluminum steady rest he made as also did Jim Jacobs, who made his steadyrest out of wood.

**Duane Gemelke** showed a cardboard honer and honing compound he uses to put an edge on tools and that runs in the opposite direction of a standard grinder.

**Mel Turcanik** showed two depth measuring gauges that work in conjunc-

tion with each other so a person will not go through the bottom of the bowl and will give you whatever thickness you want. He showed us a homemade buffer of scotchbrite pieces stacked and mounted on an arbor that could be chucked into a drill. Several accessories that are held in the live center for the tailstock, one being the rubberized concave doorknob stops used in office buildings to hold round pieces while finishing between centers. Showed how if you have "COLE" Jaws for your chuck, to change out the rubber bumpers they give you with pieces found



**Don Wattenhofers** Steadyrest (above) and **Jim Jacobs** Steadyrest ( below)

in a plumbing supply area and a metal toolrest he had made to use for end grain turning, (Much easier) and a center marker made with 3 pieces of wood and an old hacksaw blade.

**Don Robinson** - Showed a flexible "V" shaped tool with small finishing nails at the top of each leg of the "V". This is how

Don held his Eggs to apply the finish to them. (The eggs were for our egg challenge last spring)

**Hal Malmlov** - Showed a profile he made from a HSS planer blade. Hal uses this to mass produce some handles for a customer

**Dave Schneider** showed a simple board



Show and Tell (above) and some of the Wood Raffle pieces (below)



and dowel depth gauge, a centerfinder made out of scrapwood and plexiglas, an endgrain hollowing tool made from oil hardened rod with a 1/4" HSS bit in the end of it, a 2x4 with a "V" groove cut into it for holding round pieces to be drilled, a turned wooden morse taper used when reversing a bowl to finish the bottom, a "Go/NoGo" gauge made out of fibre board to size spigots to fit into his Stronghold chuck, small soap/shampoo bottles to hold oil and varnish rather than to open cans all the time, a homemade toolrest for a Carbatech Lathe, made out of stock metal parts from Menards, using a floppy disk holder to hold sandpaper disks in and the use of automobile Anti-sieze lubricant on screws in chucks and metal parts to prevent freezeup when turning wet wood.

### Show and Tell

**Don Wattenhofer** - Three thin stemmed goblets and a very thin cherry bowl about

*Continued on page # 4*



**Show and Tell continued from Page # 3**

8" in diameter.

**Bruce Arones** - Walnut Bowl

**Hal Malmlov** - Three Birdseye Pine Bowls finished with Behlens Turning Oil

**Ed Johnson** - Flying bowl out of Spalted Maple

**Allen Furber** has square drive screws he is willing to share/sell reasonably. Please contact Allan for further information.

The Wood Raffle was very successful and special thanks to Paul Kachelmyer for sending quite a bit of wood along for the raffle.

**Saturday, January 25th.**

A Small group meeting was held at Dave Schneiders' home in the afternoon and was open to anything pertaining to woodturning. Attending were members Ron Meilahn, Al Gaskell, Allen Furber, Brad Murdock and Tom Schwartz.

Following are some of the comments about this meeting from the attendees.

- There were many questions I could ask in this informal setting as opposed to our regular meetings.
- It is comforting to know that others have similar problems in turning.
- Although I'm not into bowl turning yet, your step by step process was very enlightening.
- I came away with some good ideas on reshaping some of my existing tools for unique cuts rather than buying custom made tools.
- Walking us through the hows and whys of turning green wood, drying roughed out pieces, preventing checking, etc was very enlightening.
- Seeing some of your work expanded my view of what was possible in turning. My focus has been to learn how to turn a duck call, and seeing what you have done has expanded that outlook.
- The discussion regarding safety was important to me. Working with duck calls has its dangers, but not to the extent of the bigger items you work on.
- Learning about green wood and how

too slow dry it (one technique, but not the only technique as you would point out) was good for me. Prior to the I thought only kiln dried material was what someone would use.

- The sharpening techniques were also a big help. I know that I need sharp tools, but was unsure on how to do the sharpening.

Some of the key points I saw were:

- Actual turning of bowls on your new lathe. This Included the breaking apart of the center core for another bowl and your re-mounting and turning procedure.
- Tool sharpening - Your grinder & set-up along with your personal approach to the proper cutting angle on the face. One point you made that I hadn't realized, was mounting the grinder at the same height as the cutting tool is used (lathe spindle height).
- The drying of your machined green wood in double brown bags and how you store them.
- Your dust collection system. I am planning to install one when I move my shop to the next room, so it helped see a real installation.
- Reviewing some of your finished turnings.
- Your log book complete with snap shots of the actual work.
- Two significant points that you made dealt with safety.
- The fact that you had not attached your lathe firmly to the floor, although it is heavily weighted. This allows the lather to "shake" or vibrate freely with an out-of-balance load. The amount of "shake" is an indicator of how out-of-balance the turning piece is, allowing you to adjust the speed to safely cope with the out-of-balance.
- The second was maintaining "loose" drive V-belts. The degree of looseness allows normal drive to the work piece, while allowing slip in advent of sudden excessive load such as the cutting tool catching, or jamming, or even clothing catching on the work piece.
- Both seem like excellent safety ideas to promote.

**Editors Note:**

*This was a fun afternoon with a lot of information being shared. I think that small groups held in the different areas of our geographical location would be beneficial to all members whether you are "Advanced" or "Just Beginning". This is an excellent way to get to know other members and also will serve as a feedback to our monthly membership meetings.*

*Dave Schneider*

---

**Saturday, February 8th,  
1:00 to 4:00PM - Threading turned  
pieces and Hands on at the lathe.**


---

The meeting was held at Don Wattenhofers house, and Don demonstrated his unique way of Threading for us.

We first had the business portion of the meeting and then went on to;

**Show and Tell** with the following members and their pieces:

**John Ratliff** brought in a couple of Pawns in walnut that he is practicing on for a future chess set.

**Paul Keller** brought in two smaller bowls of walnut and apple. The apple started out larger but kept checking on Paul.

**Mel Turcanik** brought in a walnut vessal that was a cross between a bud vessal and a hollow form that he had dried in a microwave. Mel said that he is having pretty good luck with the microwave. He also had a nicely decorated top and several other pieces he has been working on.

**Ed Johnson** showed us one of his elegant segmented pieces made from birdseye maple and padauk.

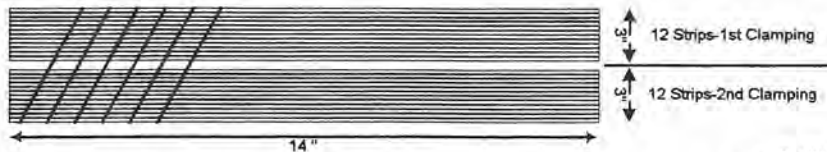
**Larry Heyn** brought in two very nice smaller hollow pieces,

**Ron Williams**, visiting from Moorhead, MN brought in an Elm hollow form he had turned which was very nice.

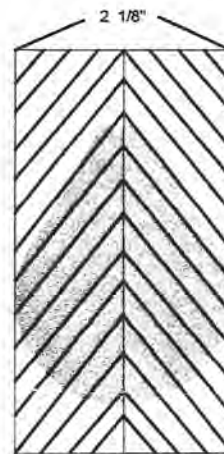
**Dave Schneider** brought in two nested soft maple bowls that he had turned green to final thickness two days ago to show the deforming process that occurs in just two days. The larger bowl started out 11" in diameter and had change to an oval of

## Jim Jacobs instructions for making Hot Air Ballon Christmas Ornaments

- Select contrasting woods (Birch, Cherry, Walnut work well)
- Rip into strips (1/4" x 1 1/4" for a 2" diameter balloon)
- Glue these strips face to face into a blank approximately 6" wide and 14" long. Repeat the same pattern of wood across the width. It may work best to glue this 6" blank in two steps, since the strips tend to slide as pressure is applied from the clamps.



- After the two blanks are glued up to the 6" width and the glue is dry, the blank may be scraped and run thru a planer or hand planed to a thickness of 1 1/16".
- Cut 4 pieces from the blank. (I used a 30 degree angle but up to 45 degrees will work also.) These cuts should be the same thickness (1 1/16")
- Glue two of these together in a herringbone pattern, making sure the strips match at the glue line. →
- Glue up the other two the same way. →
- Scrape the faces and then glue face to face into a one block 2 1/8" square.
- Square the ends up and you are ready to turn!



One of the balloons  
Jim had at the Christmas  
meeting

## Some information on Rus Hurt

Rus Hurt combines technical skill, artistic sensitivity, and his love of wood, in the art of woodturning. Rus has been working wood in various capacities for more than twenty five years; eighteen of those years have involved the use of the lathe directly or indirectly.

Raised in Hutchinson, Mn., west of Minneapolis, Rus moved north after graduating from the U of M. Living in the northland generated diverse exposures to worlds of "work" and "life" experience including working in the Emergency Room at a large general hospital and, a stint in the Merchant Marine sailing the Great Lakes to the Atlantic Ocean. In the mid 70's Rus met his wife, Cindy, and the hook was dropped in Port Wing, Wi. located along Lake Superior's south shore.

Out of necessity and experience Rus has developed a pragmatic approach to living in the northland and, as called by his friends, a "Yankee cheese-head" approach to turning wood. (Friends?)

Rus's work on the lathe ranges from the utilitarian to the sculptural and purely ornamental; often blending a pleasant

mixture of both. Hurt's turnings speak eloquently about a turner's affection for his craft and medium. His commitment to detail, to the process itself, and to understanding wood, give a character and depth that accompany his works far beyond the basic bowl.

Rus is a founding member of the AAW and served as the first secretary of the Board of Directors from 1986 to 1992. In addition to turning wood, Rus has written several articles for American Woodturner, Wood Magazine, and other publications. He is trained and certified in Neuromuscular therapy, and along with his wife, Cindy, a physical therapist, operate Hartwell Alternatives, a service providing physical therapy, massage therapy, and somatic education. Rus is an avid photographer and videographer and adventurer and family man.

**Join us at Woodcraft on Saturday, March 8th, 1997** and spend an eclectic day as he shares his long standing interest in natural beauty, his fascination with wood, and his ability to unlock beautiful turnings from unsuspecting chunks of wood. Learn some tips and techniques and what makes this unique northlander tick.

10 7/8 x 11 1/8". The smaller bowl which had been cut from the center of the larger had started at 7 3/4" in diameter and had really changed to 7 1/2" x 7 15/16". These will make functional bowls with the base and the rim sanded level when dry in about two weeks.

**D**on Wattenhofer built his own threading jig that has different gears to it that will change the TPI and pitch of the threads. It is very unique in that Don will turn the pieces on his lathe while they are being held in a NOVA chuck. He then unscrews the whole NOVA chuck from the headstock and remounts the chuck on his threading jig.



The following process is how Don showed to thread a top (external thread) and body (internal thread).

Determine diameter of the piece and then measure and part off the body from the top piece that is still held in the chuck.

Turn down to the diameter for the screws and put in about a 1/4" undercut for the threads.

Unscrew the NOVA chuck with the piece in it and remount on the threading machine. Set at beginning of thread for a very light cut. Repeat until you have the depth necessary.

Replace chuck on lathe, remove top and insert body. Hollow the body making sure you do not get it to big so that internal threads won't hold. Do an undercut as with the top and then transfer the chuck to the threading machine to do the inside threading. Same process as top except internal threads.

Remount on lathe and screw top to body. Finish turning the outside and top, part of and finish bottom.

Thanks Don for the demo....

We then had our wood raffle which again was very successful. After a break we had a general discussion and some hands on turning at 3 of Dons lathes. Quite a few members stayed late to discuss questions and issues, and it was another very informative meeting. Thanks again Don for hosting and presenting the major portion of the meeting.

### Welcome to the following New members

Doug Pearson	12/28/96
Bradley Murdock	1/4/97
James McDonough	1/6/97
Gary Miller	1/12/97
Bob Boettcher	1/14/97
Robert Freeman	1/17/97
Lawrence Heyn	1/28/97



**M**ike Martin III, our youngest Member received a \$600 Educational grant from the American Association of Woodturners and is now in the process of determining what he is going to do with this grant. He assured us we would be the first to know when he made the decision. Congratulations Mike!!!

### Quote for the Month

Change is inevitable...  
Progress is optional.

### Safety Tips from the February meeting:

Always move the tool holder away from the piece mounted on the lathe when sanding to prevent any body parts or clothing getting caught between the toolrest and the rotating piece.

Slide the tailstock back on the ways or take it off the lathe so you do not run your elbow into the center piece of the tail stock

### Tip:

Whenever mounting a blank piece of wood on a screw chuck that will be used over again: screw it on, then back it out, apply some thin super glue to the threads that have just been created. This will harden the threads in the wood and make the blank usable for many times.

*Dave Schneider*



1997

## **Minnesota Woodturners Association Discount Suppliers**

The following suppliers offer special discounts to MWA members. In order to receive your discount, you must show that you are a member in good standing for the year by showing the supplier your membership card. Suppliers wishing to be included in the program should contact Ron Meilahn @ (612) 633-8902

**American Tool Supply.** 712 University Ave, St Paul, MN 55704 (612) 227-3500 (Bryan) Discounts vary by manufacturer. No sale discounts

**Derickson Co. Inc** (612) 332-6791 (Tim) Wholesale prices on cabinet making supplies, finishes, router bits, etc

**Hardwood Lumber Inc** 591 Bighorn Dr, Chanhassen, MN (Loel Brown) (612) 934-6412. Wholesale prices to MWA members; discounts depend on wood species and quantity.

**Hirshfield Decorating Centers** (10 Metro locations & Rochester) High volume contractors discount applies to stains, varnishes, paints, application tools and sundries. No discounts for window treatments, wall coverings or fabrics.

**Lake Elmo Hardwood Lumber** (612) 777-8118 (Bob Eechert) Discount on all hardwoods. Call Bob for details before placing your order.

**Savitt Bros.** (612) 871-1155 (Burt Savitt) Discount to Net price. MWA members receive contractor discount on stains, finishes. i.e. Watco, MinWax, etc.

**Swanson Hardware** (612) 925-4083 All sales staff. Wholesale prices on cabinet making supplies

**Tool Crib of Minnesota** (612) 521-7657 (Terry) 5%-40% discounts on precision instruments, hand tools, cutters, etc - depending on brand and quantity

**The Woodworkers Store** (All 4 Twin City stores) 10% discount on regular priced merchandise at the stores. Discount does not apply to power equipment or power tools. Not valid on sale merchandise or in conjunction with any other promotional offers.

**Valspar Paint** (612) 827-1787 (Kevin) 20% discount on all consumer paint products, stains, finishes, tack cloths at all 3 Twin City locations.

**Warner Industrial Supply** (612) 378-7300 (Dan Shea) 10% discount on 3M abrasives, Lacquers, custom made bandsaw blades, Bosch router bits, various brands of hand power tools, etc

**Woodcraft** 9741 Lyndale Ave S, Bloomington, MN (612) 884-3634. A 10% discount on all woodturning supplies will be given to MWA members on the days of meetings or demonstrations held at the store

**Youngblood Lumber Co.** (612) 789-3521 Refer to their catalog for entire stock listing and then ask Customer Service for current wholesale prices.

# Minnesota Woodturners Library of Video Tapes for Member Checkout

<u>Tape Number</u>	<u>Tape Name</u>	<u>Person(s) / Demonstrator(s)</u>
1	Turning Projects by Richard Raffan	Richard Raffan
2	Turning Wood by Richard Raffan	Richard Raffan
3	Hollow Turning by John Jordan	John Jordan
4	Bowl Turning by John Jordan	John Jordan
5	Hollow Turning, Tape # 3 by David Ellsworth	David Ellsworth
6	Lathe modifications, Chucks & Shop setup by David Ellsworth	David Ellsworth
7	Sharpening, gouges, making chucks. Tape # 1 by David Ellsworth	David Ellsworth
8	Tools for Hollow Turning. Tape "T" by David Ellsworth	David Ellsworth
9	AAW Turning Symposium 1992 & 1994	AAW
10	Hollow Vessel, John Berglund Demo 9/93	John Berglund
11	Ben's Mill, Sound, Woodwrights	
12	Bonnie Klein Demo 4/17/93	Bonnie Klein
13	Melvyn Firmager Demo 3/21/94	Melvyn Firmager
14	Rude Osolnik Demo 3/26/88	Osolnik
15	Rod Croncite Demo, Burl Vases 4/14/93	Rod Croncite
16	Fun at the Lathe, by Timby	Timby
17	Hooked Tools, & Birdhouse	William Allshouse
18	John Jordan Demo 5/11/90	John Jordan
19	Bowl Turning by Del Stubbs	Del Stubbs
20	Michael Mode Demo, Stewart Tools 1988	Michael Mode
21	Vic Wood Demo part A, 6/19/93	Wood
22	Vic Wood Demo part B, 6/19/93	Wood
23	Russ Hurt Demo, Spring 1992, Harvesting Wood Berglund, Lossing, Hollow Vessels, Magnussen	Various
24	Finishing, Burl Bowl Demo, Resche	Resche
25	Pens, Eggs, & Basic Turning	Kachelmyer
26	Threads, Tops, Chatter Tool, & Shear Scraping	Don, Paul
27	Alan Lacer Demo, Boxes	Lacer
28	Wood Hat Demo, Don Wattenhofer 4/30/94	Don W.
29	Vic Wood Demo 6/19/93	Wood
30	Russ Hurt Demo, 4/89, Bowl Turning & Ron Kent Demo 5/89	Russ Hurt, Ron Kent
31	M Hosaluk Demo Part A, Bowls 3/94	Michael Hosaluk
32	M Hosaluk Demo Part B, Bowls 3/94	Michael Hosaluk
33	Michael Hosaluk Demo, Bowls 3/94	Michael Hosaluk
34	Berglund 9/90, Hedlund 1/90, Demo	John Berglund & Dave Hedlu
35	Mike Darlow, No. 1, Theory, Spindles	Mike Darlow
36	Mike Darlow, No. 2, Spind. Cup Chuck	Mike Darlow
37	Mike Darlow, No. 3, Faceplate, Bowls	Mike Darlow
38	Mike Darlow, No. 4, Tools	Mike Darlow
39	Michael Mode Demo 4/15/95	Michael Mode
40	Craig Lossing Demo, 9/16/95	Craig Lossing
41	Christian Burchard Demo, 4/20/96	Christian Burchard

The above Video tapes can be checked out at any membership meeting or if you are unable to attend they can be mailed. Contact Duane Gemelke @ (612) 566-8516 if you have any questions or comments.



### Some information on Clay Foster

Clay Foster was born in 1954 in Austin, Texas. He currently lives and maintains a woodturning studio near Krum, Texas, with his wife Penny. Clay is self-taught in woodturning and is a Founding member of The American Association of Woodturners. Clay is also President Emeritus of The Woodturners of North Texas. Clay has been in over 17 shows and exhibitions since 1987 and has his pieces in the collections of many of the top collectors in this country as well as the Government of Japan. He has been published in the Journal of American Woodturners and in "Woodturning - Guild of Master Craftsman of England". Clay has been a featured demonstrator at the American Association of Woodturners National Symposium in both 1994 & 1995. He has also taught at Arrowmont School of Arts and Crafts, The Appalachian Center for Crafts, Maryland Hall for the Creative Arts and at "Texas Turn Or Two" the national woodturning symposium of the Republic of Texas in 1995 & 1996.

### Demonstration Topics for the meeting on May 10th, 1997.

**Adaptations** - Any tool you buy is just a starter kit that has to be altered and adapted to fit a turners specific style and purposes. Sometimes turners may need to create their own tools. Occasionally, new tools introduced by manufacturers can lead to the discovery of new methods and techniques. This presentation will be a sharing of the adapted methods, techniques, and home made tools Clay has come across in the world of woodturning. These will be demonstrated while making a small two piece hollow vessel.

**Wobble pots** - A step by step presentation of one method for making a multiple axis turned vessel, with discussion and description of alternative methods and ideas.

**Multiple axis spindle work** - one example of multiple axis spindle work and applications for it.

**Slide show** - A retrospective presentation of where Clay started in woodturning where he is now and how and why he got there.

## Membership Application/Renewal MINNESOTA WOODTURNERS ASSOCIATION

Name (Please Print) \_\_\_\_\_

Telephone # \_\_\_\_\_

Date \_\_\_\_\_

Address \_\_\_\_\_

City \_\_\_\_\_

State \_\_\_\_\_

ZipCode \_\_\_\_\_

Dues are \$20.00 yearly (Starting In January)  
but \$10.00 after July 1st of that year

Amount Enclosed: \$ \_\_\_\_\_

Please Check: Renewing Member ☐ New Member ☐Are you a member of the AAW? Yes ☐ No ☐

You will receive all issues of the newsletter starting  
with January of the year you join, plus a new members kit.

#### I would be willing to:

Help out at meetings ☐  
Be on a planning committee ☐  
Help out at demonstrations and/or shows ☐  
Serve on the Board of the Association ☐  
Contribute to the NewsLetter ☐

#### Mail To:

MN WOODTURNERS ASSOCIATION  
c/o Ron Meilahn  
1638 23rd Ave N.W.  
New Brighton, MN 55112

## Looking for a source for wood turning supplies and related items?

Here is a list of suppliers and toll free numbers, those marked with an \* will send you a catalog at no charge: This is a list of suppliers that Paul Keller and Dave Schneider have used, it is not meant to be an endorsement for these firms, but rather a source for information. If you know of other suppliers that would be helpful or you find changes or corrections to this list, send or give that info to Dave Schneider to update this list.

**\*Bonham's Woodworking Supply, Inc.**

1916 Morningside Drive, Garland, TX 75042. TEL: 214-278-2097. Pen Parts and Turning Supplies.

**\*Craft Supplies USA.**

1287 E. 1120 S., Provo, UT 84606. TEL: 800-551-8876. Lathes, Tools, and Woodturner's Supplies.

**\*Constantine**

2050 Eastchester Road, Bronx, NY 10461, TEL: 800-223-8087. Tools and Supplies.

**\*Enco**

Complete line of metalworking tools and equipment 1-800-873-3626

**\*Garrett Wade Co.**

161 Avenue Of The Americas, New York, NY 10013. TEL: 800-221-2942. Woodworking Tools.

**General Machinery**

835 Cherrier, Drummondville, PQ J2B 5A8, Canada. TEL: 819-472-1161. Machinery.

**Glaser Engineering**

P. O. Box 95, El Segundo, CA 90245-0095. TEL: 310-823-7128. Custom Turning Tools and Screw Chuck.

**Grainger W W**

1721 Marietta Blvd, Atlanta, GA 30318. TEL: 800-323-0620. Motors, Controls, Tools.

**\*Harbor Freight Tools**

3491 Mission Oaks Blvd, Camarillo, CA 93011-6010. TEL: 800-423-2567. General Tools.

**\*Highland Hardware**

1045 N. Highland Avenue NE, Atlanta, GA 30306. TEL: 404-872-4466. Lathes, Turning Tools, and Woodturning Supplies.

**\*HWB Enterprises Inc.**

25275 Hoffmeister, Boring, OR 97009. TEL: 503-658-3409. Faceplates and Toolrests

**\*Klingspor Abrasives Inc.**

2555 Tate Blvd. SE, Hickory, NC 28603-2367. TEL: 800-645-5555. Abrasives.

**\*Klockit**

P. O. Box 636, Lake Geneva, WI 53147. TEL: 800-556-2548. Clock Kits, Hardware and Accessories.

**\*Lab Safety**

Personal safety equipment 1-800-356-0783

**\*Lee Valley Tools**

5511 Steeles Avenue W, Weston ON M9L 1S7, Canada. TEL: 613-596-0350. Taig and Lee Valley Lathes and Tools.

**\*Liberon Supplies**

P. O. Box 86, Mendocino, CA 95460. TEL: 800-245-5611. Hot Stuff Glue and Finishing Supplies.

**McFeelys'**

P.O. Box 11169, Lynchburg, VA 24506-1169. 1-800-443-7937, Square drive screws, tools, etc

**Merit Abrasive Products**

201 W. Manville, Compton, CA 90224. TEL: 800-421-1936. Power-Lock Sanding Discs.

**\*Micro-Mark**

340 Snyder Avenue, Berkeley Heights, NJ 07922-1595. TEL: 800-225-1066. Small Tool Specialists.

**Norton Co.**

1 New Bond Street, Worcester, MA 01606-2698. TEL: 508-795-5000. Abrasives

**Oneway Manufacturing**

241 Monteith Avenue, Stratford ON N5A 2P6, Canada. TEL: 800-565-7288. Lathe Chucks and Accessories. Tool Sharpening Systems.

**\*Packard Woodworks**

P. O. Box 718, Tryon, NC 28782, TEL: 704-859-6762 or 800-683-TURN. Woodturning

Tools and Suppliers.

**Powermatic**

619 Morrison Street, McMinnville, TN 37110. TEL: 615-473-5551. Woodworking tools and lathes.

**\*Seven Corners Hardware**

Power equipment plus a very complete hardware store St. Paul, MN 612-224-4859

**\*The Woodworkers' Store**

4365 Willow Drive, Medina, MN 55340. TEL: 612-478-8213 or 800-279-4441. Tools and Equipment.

**\*Tower Hobbies**

Complete line of hobby supplies, ca glue, epoxy glue 1-800-637-7503

**Turncraft Clocks Inc.**

P. O. Box 100, Mound, MN 55364. Clock Movements.

**The Turning Post**

394 E. 2000 N., Ogden, UT 84414. TEL: 801-782-2010. Pen-Plus and E-Z Vacuum Chuck.

**\*Woodcraft Supply**

210 Wood County Industrial Park, Parkersburg, WV 26102-1686. TEL: 800-225-1153. Woodworking and Woodturning Tools and Supplies.

**Woodfast Machinery**

912 Port Road, Woodville 5011, Australia. TEL: 08-45-2577. Woodturning Supplies, lathes.

## Classified Ads

Turning related, personal classified ads are free to members. Commercial ads are billed at \$4 per month, per column inch. To place an add, call Dave Schneider. (612) 934-4667

### Moving sale:

**Mahogany boards:** 1"x8"x 4 to 6' surfaced on all 4 sides, excellent quality, \$3.00 per board foot.

**Black walnut lumber:** 1" and 2" thick, variable widths, rough sawn by bandsaw sawmill, air dried indoors for 5 years, excellent quality, approximately 500 board feet, \$2.50 per board foot. Also 2" to 4" thick, 6 to 12 inch wide, 16 inch long black walnut turning or carving blocks, \$2.00 per board foot.

Also approximately 100 black walnut and misc. woods turning blocks, \$1.00 each.

**Red Oak Lumber:** 3/4 inch thick, variable width, 8 feet long, approximately 100 board feet, planned but not edged, \$1.50 per board foot.

**Butternut blocks:** Woodcarving or woodturning blocks, 6" to 8" thick, 16" long, no cracks, dried 10 years \$2.50 per board foot.

**Butternut lumber:** Rough sawn, 2"x8"x 7 feet long, Approximately 60 board feet, \$2.00 per board foot.

**White Oak lumber:** Rough sawn, 2"x10"x7 feet long, Approximately 40 board feet, \$1.00 per board foot.

**Firewood:** Mixed hardwood, cut, split, dried 3 years. Fireplace cord 4' x 8' x 16" \$50.00 (pickup truck load). This is approximately \$30.00 cheaper than any listing in the newspaper. Approximately 5 cords available.

**Saw blades** for circular saws, 7 1/4" Brand new, still in packages. Cross cut, plywood, and carbide tipped, Priced at 1/2 of store sale price, varies from \$2.00 to \$7.00.

**Motors, Arbors:** Three motors, 1/4 and 1/3 horsepower \$3.00 each, 3 arbors with grinding wheels, \$3.00 each. Make your own grinding wheel setup!.

**Boiled linseed oil:** Three gallons, \$3.00 per gallon.

Contact Paul Paul Kachemeyer @ (612) 730-7431

### Wood for Sale:

**EXQUISITE Guatemalan Cocobolo**  
Wild Figure and Color!!!  
1" - 4" thick up to 15" wide

Mexican Cocobolo,  
Nicaraguan Cocobolo,  
Osage Orange  
Also Rosewood and other Exotics

Call Craig Lossing - (612) 785-4194

## Future Meetings

**March 8th, Saturday, 9:00AM to 5:00PM - Professional Demo by Rus Hurt - Charge of \$15 for members, \$25 for non-members @ Woodcraft in Bloomington, MN** (This will be limited to 40 people on a first come basis for registration. Send a check to Ron Meilahn, Treasurer/Minnesota Woodturners Association, 1638 1638 23rd Ave. N.W., New Brighton, MN 55112. It would probably be a good idea to give Ron a call to see if there is room left as there have been many registrations.) *See the article on the bottom of page # 6 for more information on Rus Hurt.*

**March 15th, Saturday, 1:00PM-4:00PM Small group meeting at Jim Jacobs home.** Limited to 1st 6 people that contact Jim @ (612) 437-2302. This will be for beginning to intermediate turners and Jim will demonstrate both spindle and faceplate turning. Please bring a chair and safety glasses. There will also be hands on opportunity for those that would like to try something specific..

**April 8th, Tuesday, - 6:30PM Main portion of meeting starts at 7:00PM. Finishing & Techniques-Mel Turcanik @ Tim Mannings' Home** 1100 44 1/2 Ave NE, Columbia Heights. Directions to Tims'. About 1 mile S. of I # 694 and 2 blocks E. of Central Ave. Take Central Ave to 45th. Turn East on 45th, go 1 block and then S. 1 short block to 44 1/2. Turn E. to Tims'. All members attending the meeting and signed up will have a chance in a drawing for the Bob Flexner book on Wood Finishing. Please bring a chair and warm clothes. We will have our Wood raffle and Show and Tell so bring your latest work for everybody to see.

**May 10th, Saturday, -9:00AM to 5:00PM - Professional Demo by Clay Foster- Charge of \$15 for members, \$25 for non-members @ Woodcraft in Bloomington, MN** (This will be limited to 40 people on a first come basis for registration. Send a check to Ron Meilahn, Treasurer/Minnesota Woodturners Association, 1638 1638 23rd Ave. N.W., New Brighton, MN 55112.)

*See page # 12 for an explanation of the demo and information on Clay Foster*

### Wanted to Buy:

Pre-1995 American Woodturner Magazines. Contact Paul Keller - Home 439-8180, Work 430-7496.

### Lathe For Sale: Heavy Duty Metal Lathe

Atlas 12" x 36" with flat ways. Pedestal base with Drive underneath. Speed range of 28-2072 RPM. Accessories included are: 3 Jaw scroll chuck, 3 Jaw drill chuck, Live center, Dead center, 3 tool holders, boring bar and 1 set of collets. Excellent condition. \$1500 Call Hal Malmlov. (612)789-9616

### Training Classes

Fellow MWA member and Professional Woodturner Alan Lacer is teaching the following classes at the Woodcraft Store. These are all for fee classes. For further information call (612) 884-3634

Beginning Turning	April 7th, 5-9 PM
Bowl Turning	April 8th, 5-9 PM
Skew Chisel	April 29th, 5-9PM
Beginning Turning	May 20th, 5-9 PM
Bowl Turning	May 21st, 5-9 PM





March 1997



Newsletter Editor  
Minnesota Woodturners Association  
16777 Thatcher Rd  
Eden Prairie, MN 55347-2261



# Minnesota Woodturners Association

*Dedicated to providing education, information and an organization to those interested in woodturning.*

The Minnesota Woodturners Association was formed in 1987 with approximately 25 charter members and now has about 80 members. The Association is non-profit and all work by members is done voluntarily.

The skill level of our members ranges from complete beginners to skilled professionals. Membership includes a few professionals but hobbyists make up the majority. The members live mostly in the Twin Cities metro area, however there are members in all areas of Minnesota stretching into western Wisconsin.

The Association normally schedules meetings once a month during fall, winter and spring of the year. (September thru May) The meetings are normally held on Tuesdays or Saturdays and the group meets in a different location each time. The meeting locations vary from members shops, educational associations, to the various woodworking stores located throughout the metro area.

The Newsletter is published bi-monthly, 5 times a year, excluding the months of July/August

The meetings usually consist of some sort of turning demonstration or related subject. The subjects of the demonstrations vary from basic techniques to advanced levels. The meetings are always open to questions from the members and we invite and encourage them to share their knowledge and skills freely. The Association tries to arrange at least one professional demonstration each year, with past professional demonstrators coming from all areas of the United States, England and as far away as Australia.