

Minnesota Woodturners News

Newsletter of the

MINNESOTA WOODTURNERS ASSOCIATION

Local Chapter

February 1992.

American Association of Woodturners

Minnesota Woodturners Association Officers

President	William Allshouse	(612) 755-3373
Vice President	Don Wattenhofer	" 572-1045
Secretary	John Engstrom	" 475-0307
Treasurer	Hal Malmlov	" 789-9616
Newsletter Editor	Paul Kachelmyer	" 738-3940
Program Director	John Berglund	1-558-2338

Membership Application and Renewal Minnesota Woodturners Association

Name (Please print)

phone

Address

Zip code

Dues are \$15 yearly (starting in Jan.)

but \$10 for new members joining after July 1.

Please check: Amount Enclosed _____

Renewing member _____. New member _____

Mail to:

MN Woodturners Assoc

c/o Hal Malmlov

3613 Belden Dr.

Mpls. Minn. 55418

DO NOT CUT OFF --INCLUDE LIABILITY RELEASE ON BACK !!!

MN Woodturners Association

64 108th Ave. N.W.

Coon Rapids, Minn. 55433



LIABILITY RELEASE

The process of woodturning presents an ever-present risk of injury to the individual operating a lathe and to any individuals observing its operation.

We want to make sure that all individuals operating or observing a lathe are aware that these hazards exist.

Lathes spin wood at high speeds presenting the potential for injury if the wood or portions of it somehow break apart, shatter, or come away from the lathe while it is spinning. Potential weaknesses exist in all pieces of wood therefore, the potential for wood breakage and personal injury exists any time a lathe is used.

Sharp tools and brittle tools, are also used in woodturning presenting the potential for injury for accidents to lathe operators or observers.

Wood chips, shavings, splinters, chunks of wood and dust fly off of the wood being worked on the lathe. Eye protection (goggles, face shield) is absolutely necessary to protect operators and observers from potential injury from flying debris. Wood debris on the floor also presents a hazard of slipping and falling. Dust in the air may present respiratory hazards.

Many woodworking shops are not set up especially to allow observers. Therefore, hazards may exist to individuals being in the shop due to areas being cramped or due to tools, equipment or supplies being touched, bumped accidentally started or otherwise affected by themselves or others in the shop.

By signing at the bottom of this page I acknowledge that I have read the above information, that I understand that there is a risk of injury to individuals operating or observing lathe operation, and that I accept full responsibility for any injury which may happen to me while attending, or participating in any way, any event, gathering, demonstration, or seminar in any way associated with the "Minnesota Woodturners Association". I further release from liability any individual, business, school, or meeting place and the Minnesota Woodturners Association from any injuries or damages received while attending a meeting or demonstration associated with the "Minnesota Woodturners Association".

Dated _____, 19____

NAME (Print)

SIGNATURE

ADDRESS

Dues are Due:

Membership dues are actually past due for 1991. If you have not sent in your dues yet, please do so soon.

Note: this will be the last newsletter sent to anyone who has not renewed their membership for 1992.

The membership runs from January through December. The dues are \$15.00 per year. Please make checks (no cash, please) payable to the "Minnesota Woodturners Association" and mail them, along with the membership registration form on the front of this newsletter to our treasurer, Hal Malmlov, 3613 Belden Dr., Mpls. Minn. 55418.

Please also sign the liability Release on the second sheet of the newsletter and send that with the registration form. If you have signed a liability release form in the past, please sign this one anyway, as we would like to have currently signed forms for all of our members. From now on, we will ask all new and renewing members to sign a form each year, when dues are paid.

Note: Even though annual dues are now being waived for members who are Professional Woodturners, we ask that you still sign and return the registration and liability release forms.

Safety:

Right up front, we wish to remind all members and guests, that woodturning can be dangerous. Many of our members have had accidents, and injuries, of some sort, with the lathe. This is a reminder, that by attending our meetings, you do so at you own risk. This is also a reminder that we ask all members to sign a liability release. If you have not signed one, please ask one of the club's officers for one to sign. Lastly, this is also a reminder that we ask that everyone near a lathe at our meetings, bring, and wear, eye protection.

We now will be asking everyone attending a meeting to sign a "sign in sheet and liability release", for that meeting. This will include nonmembers, and will insure that everyone attending has signed a liability release.

Meeting Cancellations:

If bad weather occurs on the day of a meeting, you can assume that the meeting will be canceled. We will try to inform the "person, place or store" where the meeting was scheduled, of the cancellation, during the day, just in case you want to call them to confirm it.

Upcoming Meetings:

February 15, Saturday 1:00 - 3:00.

John Berglund will give a demonstration, and discussion on photographing your work.

John's house is about 10 miles south of Saint Cloud, and is about a one and a half hour drive from the center of the twin cities.

Directions to John's: Take I-94 north to the Clearwater exit #24. Turn left (west) and take Highway 24 about 1.8 miles to Highway 40. Turn right (northwest), and go about 1.8 miles to the stop sign at Highway 44. Turn left (southwest), and go about 1.8 miles to John's house, 15695 County Road 44. John's house is the second one past Crescent Avenue. It is a grey house with a grey garage.

February 24, Monday 7:00 - 9:00 p.m.

Note: this is Monday, not Tuesday !

We will cover two subjects at this meeting:

1. Ron Kreitemeier will demonstrate how he makes kaliedescopes on the lathe. He says that it is fairly simple, so the demonstration will be brief.

2. Wood finishes, and finishing objects on the lathe. We hope to have a few demonstrations of finishing, and a lot of discussion on finishing. Please come and let us know of the finishing methods that you use. Please bring show and tell items that show your finishes.

If you have used finishes that you were not happy with, please bring objects that may show how things didn't turn out.

The meeting will be held at "Woodcraft Supply" (884-3634), 9741 Lyndale Avenue South, Bloomington Minn. This is approximately 2 miles south of I-494 and 1/4 mile east of I-35W. The store hours for that day will be 9:00 - 6:00. They will be closed from 6:00 - 7:00, and will open at 7:00 for us. They will be open for sales to us during and immediately after our meeting.

March 10, Tuesday, 7:00 - 9:00 p.m.

William Allshouse will give a demonstration, and discussion on methods of duplicating spindle work.

William's house is located at 64 108th Ave. N.W., Coon Rapids, Minn. This is about one mile north of Highway 10 and just west of University Avenue (one mile west of Highway 65 - Central Avenue). From Highway 10 go approximately one mile north on University Avenue to its intersection with Northdale Blvd and 109th Ave N.E., turn left (west) and go one long block to Butternut street, turn left (south) and go about three blocks to 108th Avenue N.W., turn left again and William's house is about 1/2 block down that dead

end street.

Please bring a chair, and items for "show and tell".

Future Meetings:

We hope to have an additional meeting in late March, and meetings in April, May, and possibly June. We are in the process of trying to set these up. We hope to have an all day, professional demonstration, other turning demonstrations, and an outdoor meeting on gathering, cutting, using, and preserving green wood.

The next newsletter will hopefully come out in mid March, with the info on these meetings.

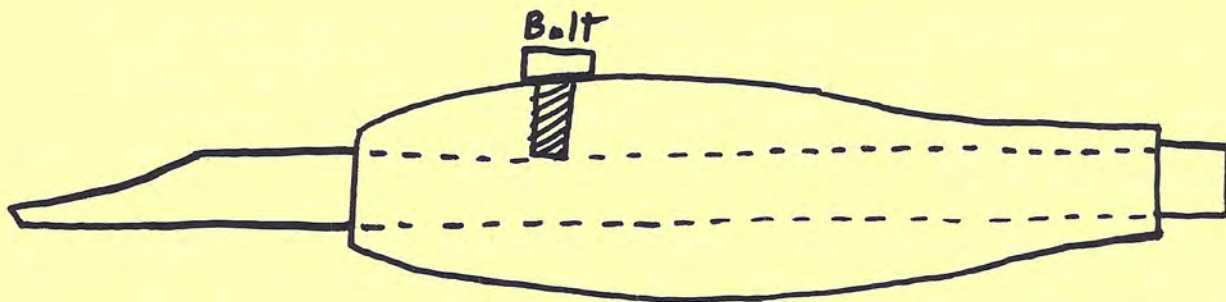
Past meeting minutes:

January 18. We met at Don Wattenhoffer's house for a very informative meeting on tools. Many people talked about many things related to tools. Thanks to everyone who contributed to this meeting !

Much of what was shown and discussed had to be seen to be understood. Some of the items I was able to note, were:

- William Allshouse makes a lot of tools out of old planer blades. He showed some scrapers, and a parting tool he made from them. I found the parting tool to be quite interesting in that the metal blade can be moved into, or out of, the handle for work close to, or far from, the tool rest. He made the handle by using a table saw to cut a dado into two strips of wood. The cut was just a hair bigger than the planer blade. The strips of wood were glued together, then turned round on the lathe to make the handle. William drilled a hole into the handle and screwed a small bolt in it. The bolt holds the blade in place, but can be loosened to allow the blade to be moved.

William has shaped the cutting end of the parting tool to a shape suggested by Del Stubbs, and has found that it works real well:



Tool is approximately 2 feet long

William has been able to buy the planer blades at machinery auctions and cabinet shop auctions.

William also showed some tool rests that he had made for him out of steel stock. He said that not only was he able to make rests that suited his needs, but they only cost about \$5.00 each.

William has also used concrete nails to make small tools. They are available for a few cents at hardware stores.

-Don Wattenhoffer also showed some tool rests that he made. Since tool rests made of regular steel are prone to getting nicks in them, Don welds a piece of hardened steel to the top edge, to avoid the nicks.

Don also showed a nice gouge he made of an old chain saw file. He cut a nice round groove into most of the length of the file with an abrasive cut off wheel, mounted on his table saw. To hold the file straight while being cut, he cut a shallow groove into a small board. The groove was the same width and depth as the file. He positioned the rip fence on the saw so that the file, held in the board, would be centered over the cut off wheel. He then used the saw, and cut off wheel to cut a groove into the file.

-Hal Malmlov showed a number of turning tools that he made using his machinists tools. The tools are very professional looking, and look like they were store bought. He started out with unhardened, oil hardened tool steel (This has a Rockwell hardness of around 30). After he was done shaping them he had them hardened to a Rockwell hardness of around 60. He had them hardened at "Metal Treaters Incorporated", at 859 Prior Avenue, in Saint Paul. They have a minimum fee of \$25.00. For that fee they will harden about a dozen tools.

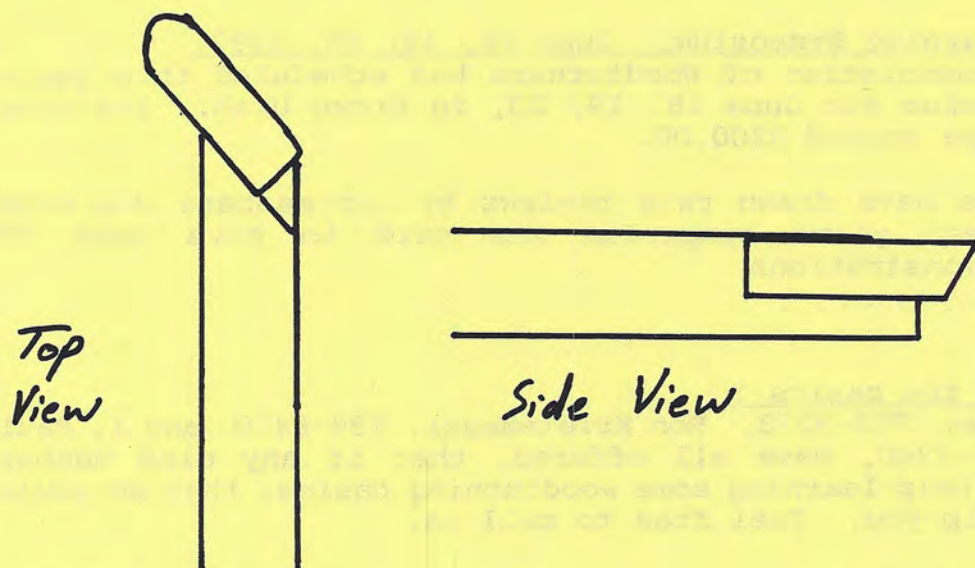
Hal also had some very nice heavy scrapers that he had recently made. They were made out of 3/8 inch by 1 1/4 inch high speed steel that had cost about \$1.00 an inch.

-Ron Krietemeyer talked about sanding discs. He found that the clip on, "Merit" type sanding discs, weaken with time, and lose their ability to stay clipped. He has found that some auto parts stores sell a screw on type of disc that does not wear out.

He uses super glue, to glue a dense foam pad to the sanding disc. He then uses 3M 77 spray adhesive to attach new sandpaper sheets to the foam. Ron uses a dense foam made for use with artificial limbs. Also suggested was foam used for computer "mouse" mats. Target stores sell a 9 inch by 8 inch by 1/4 inch pad made by Memorex, for \$2.99.

Ron also showed an "offset" tool he made for use in hollowing out vessels. He cut an angled slot out of the end of a 1/2 inch square, by 12 inch long piece of common steel. He then glued a 1/4 inch square, by 1 1/4 inch long high speed steel cutting insert (cost about \$3.00), to the angled slot in the bar. For the glueing

he uses white, (not clear), two ton epoxy, available from hardware stores.



-John Berglund brought some Excellent books on tool making, that can be understood by beginners. They were:

"The Modern Blacksmith" copyright 1974, and "The Making of Tools" copyright 1973. Both of these books were written by Alexander G. Weygers, and were published by Van Nostrand Reinhold Company.

-The store "The Tool Crib" at 42nd and Washington Avenue, in Minneapolis was mentioned as a source of metal for tools.

Display of woodturnings:

One of our members, Jim Tracy, has volunteered to organize a display of woodturnings to be shown for a month at a local library. The display would be of an informational and educational nature. It would gain exposure of woodturning, and our association, to the public.

Jim is seeking woodturnings to display. If you would be willing to offer one, or a few items, please call Jim at 571-3374. Jim lives at 250 Rice Creek Terrace, in Fridley.

Unfortunately, time is short to accomplish this. Jim needs to have the turnings by Saturday February 15. The display will run until March 21. The items will be displayed in a locked display case, but there is no guarantee, or insurance against damage or theft.

The association may wish to try to establish a permanent "collection" of turnings for such displays in the future. It would

also be very helpful to have such a display for when we have booths at woodworking shows. Perhaps we can discuss this at upcoming meetings.

National Woodturning Symposium, June 18, 19, 20, 1992.

The American Association of Woodturners has scheduled this years national symposium for June 18, 19, 20, in Provo Utah. The cost will probably be around \$200.00.

Past symposiums have drawn rave reviews by our members who have attended. Last years symposium was said to have over 50 woodturning demonstrations.

Need help with the basics ?

Willie Allshouse, 755-3373, Ron Krietemeyer, 739-8410 and I, Paul Kachelmyer 738-3940, have all offered, that if any club member needs a little help learning some woodturning basics, that we would be happy to help you. Feel free to call us.

CLASSIFIED ADDS: Any member wanting to place an add,(free to members) send the pertinent information to me, Paul Kachelmyer, at 558 Farrell st. Maplewood Minn. 55119. I will try to get it in the next newsletter.

Articles needed

Anyone who would like to add anything to the newsletter, is encouraged to do so. These could be anything that could be of interest to anyone...tips and techniques, jigs that you have found useful, reviews of new products, tools, or lathes, book or videotape reviews, or reviews of seminars or symposiums that you have attended. Just send the info or article to me, Paul Kachelmyer, 558 Farrell street, Maplewood Minn. 55119, and I will put it in the next newsletter.

DEMONSTRATORS: If any accomplished turners are travelling near or through Saint Paul, Minnesota, please give one of our officers a call to possibly set up a demonstration --- (yes, we will pay a fee). We would appreciate at least a month or two notice.