

# Minnesota WoodTurners Association

A LOCAL CHAPTER OF THE AMERICAN ASSOCIATION OF WOODTURNERS

**AAW** | AMERICAN ASSOCIATION  
OF WOODTURNERS

Volume 2018 No 8



**August  
Demonstrator  
Mike Hunter  
“Squarish Platter”**



## Minnesota Woodturners Association

### Board Members

#### Officers

##### **PRESIDENT**

Rick Auge

##### **VICE PRESIDENT AND LIBRARY**

Janese Evans

##### **TREASURER**

Mark Debe

##### **RECORDING SECRETARY**

Jerry Ritter

#### Directors

Neil Robinette

##### **MEMBERSHIP DIRECTOR**

Ken Crea

##### **501c3**

Reed Zimmerman

##### **TECHNICAL SUPPORT**

Ed Mielech

##### **AAW REPRESENTATIVE & DEMONSTRATIONS**

Linda Ferber

##### **OTHER STAFF SUPPORT**

Bob Meyer-Shop Class Coordinator; Group Purchasing

Mike Hunter – Professional Demonstrations

Steve Mages – Mentoring Program Coordinator

Paul Laes – Sales at Meetings

Mike Rohrer - Newsletter

# In This Issue

## 1. August Meeting

### a. Pre-Meeting

- i. Beads of Courage p. 3-6
- ii. Instant Gallery p. 7-10
- iii. Before the meeting p. 11-13

### b. Meeting

- i. Announcements p. 14
- ii. Main Presentation  
Mike Hunter p. 15-26
- iii. Member Challenge p. 28-31
- iv. Wood Raffle p. 32
- v. New Members p. 33
- vi. Next Meeting p. 34

## 2. Member Mini Class- Emerging Bowl

From A Log p. 35-49

## 3. Area & Regional Meetings & Gatherings p. 50-60

## 4. MWA Classes p. 62-63

## 5. Editor's Notes p. 64



# Beads of Courage



Diane and Bob Puetz coordinate the MWA's Beads of Courage program.



# Beads of Courage



To all of our dedicated wood turning artists,  
We extend to you are deepest appreciation for your partnership with Beads of Courage and thank you for your interest in making wood turned bowls and boxes for our Beads of Courage members. We are very aware of the value of the donated boxes we receive from the amazing woodturner community and are grateful every day we receive a donation that can be gifted to a child in treatment.





## Beads of Courage

Our Beads of Courage members and families deeply value these original art pieces that become sacred vessels for their bead collection.

The generosity and kindness of the woodturning community is vast and greatly appreciated by our organization as we integrate another art into our mission of providing innovative arts in medicine programming to children and teens coping with serious illness, their families, and the clinicians who care for them.

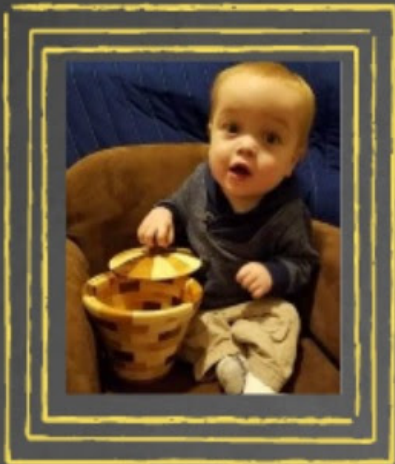
**Program Director, Beth Moneck**

*"Kyle's handmade wooden bowl to hold his beads came today! The craftsmanship and the love that are evident in this bowl are overwhelming! He loves it, we love it, thank you so much! "*

**-Jennifer, Beads of Courage parent**



## Beads of Courage



Thank you for all you do for our Beads of Courage kids!



# Instant Gallery



Arden Griep

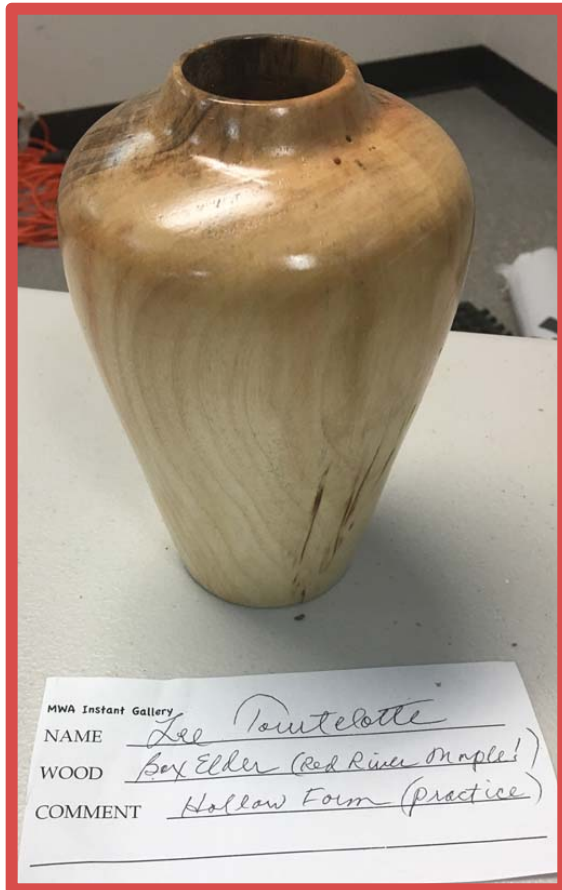


Ken Kruizenga  
Rotted Wood





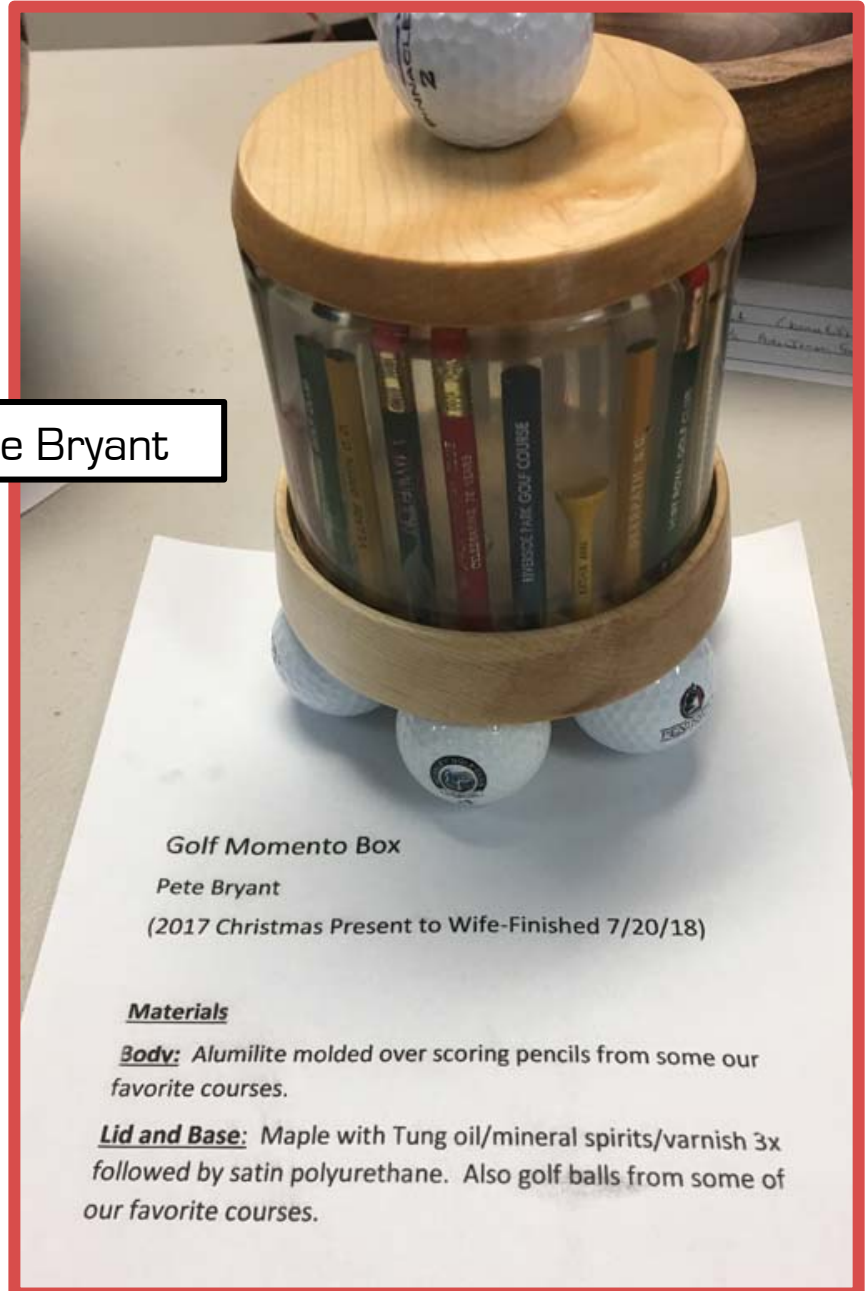
# Instant Gallery (cont'd)



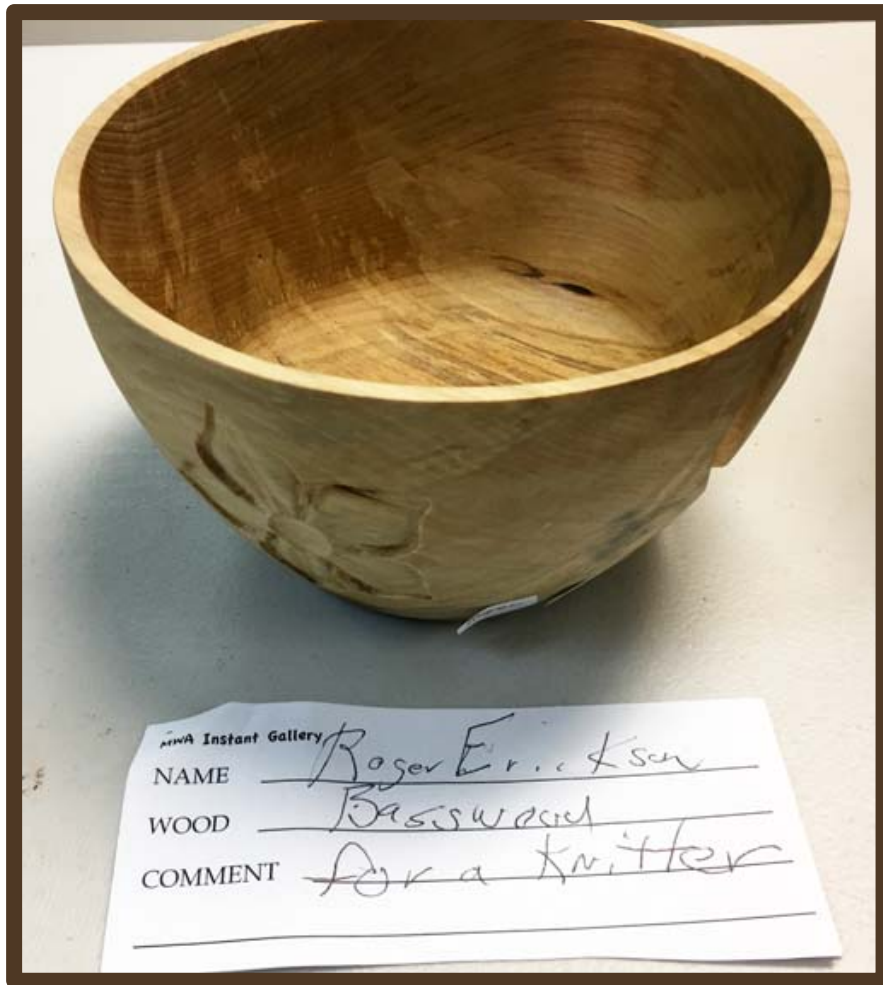
**Lee Tourtelotte**

Box Elder (Red River Maple!)

**Pete Bryant**



## Instant Gallery (cont'd)



**Roger Erickson**  
 Basswood bowl for a knitter



**Russ Loucks**  
 Black Walnut



## Instant Gallery (cont'd)



Tom Sciple

Walnut - First bowls turned in 5 months due to moving





## Before the Meeting



Dan Larson and Jay Schulz



The crowd is gathering



Dan Ernst helping Danny Judd sign out a DVD from the library



Members perusing the library collection

## Before the Meeting (cont'd)



Dan Larson checks out one of Tom Sciple's bowls in the Instant Gallery



Dick Hicks, Lee Luebke and President Rick Auge



Gordon Fay enjoys the coffee before the meeting



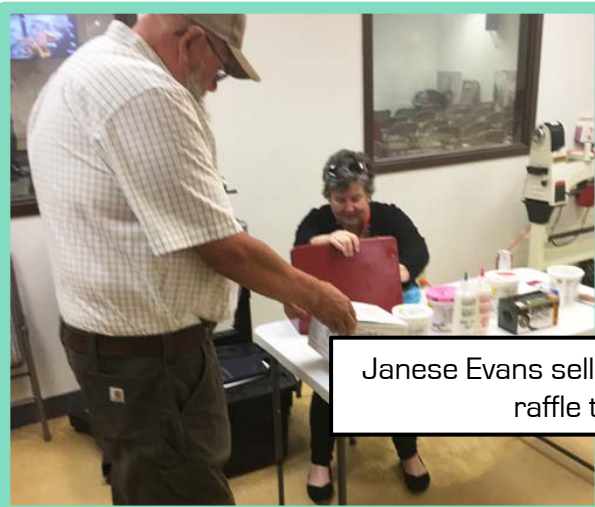
John Enstrom, Mike Hunter and Tom Sciple are early arrivals



## Before the Meeting (cont'd)



Jeff Koltveit manning the Woodcraft table



Janese Evans selling John Enstrom raffle tickets



Steve Kingdon, owner of Houck Machine and our host, talks with cameraman Dan Larson and President Rick Auge

## Announcements

- Rick Auge announced that MWA elections will be held in October.
- Our meeting room at Houck Machine has been air conditioned. THANK YOU, STEVE KINGDON!
- The Holiday Party was brought up with the following suggestions:
  - Bring spouses
  - Have a HUGE Instant Gallery
  - Year's review of Member Challenges
- Dan Larson will be taking over coordination of Shop Classes
- The SE Metro Sub Group will meet the 3<sup>rd</sup> Friday of September and October. One of those will be a tour of Forest Products open to all members. Watch the website.



Dan Larson discussing Shop Classes and requesting any member to propose a type of class



# August Demonstration Mike Hunter “Squarish Platter”



Mike described the platter he will demonstrate as “not square . . . not round.”

The technique Mike will demonstrate is derived from the description of “Turning Small Squarish Dished Platters” by John K. Jordan  
*(see page 26 to obtain a detailed handout from John K. Jordan)*



The first step is to prepare a template

Templates 7.5", 8", and 10"  
in diameter are very useful

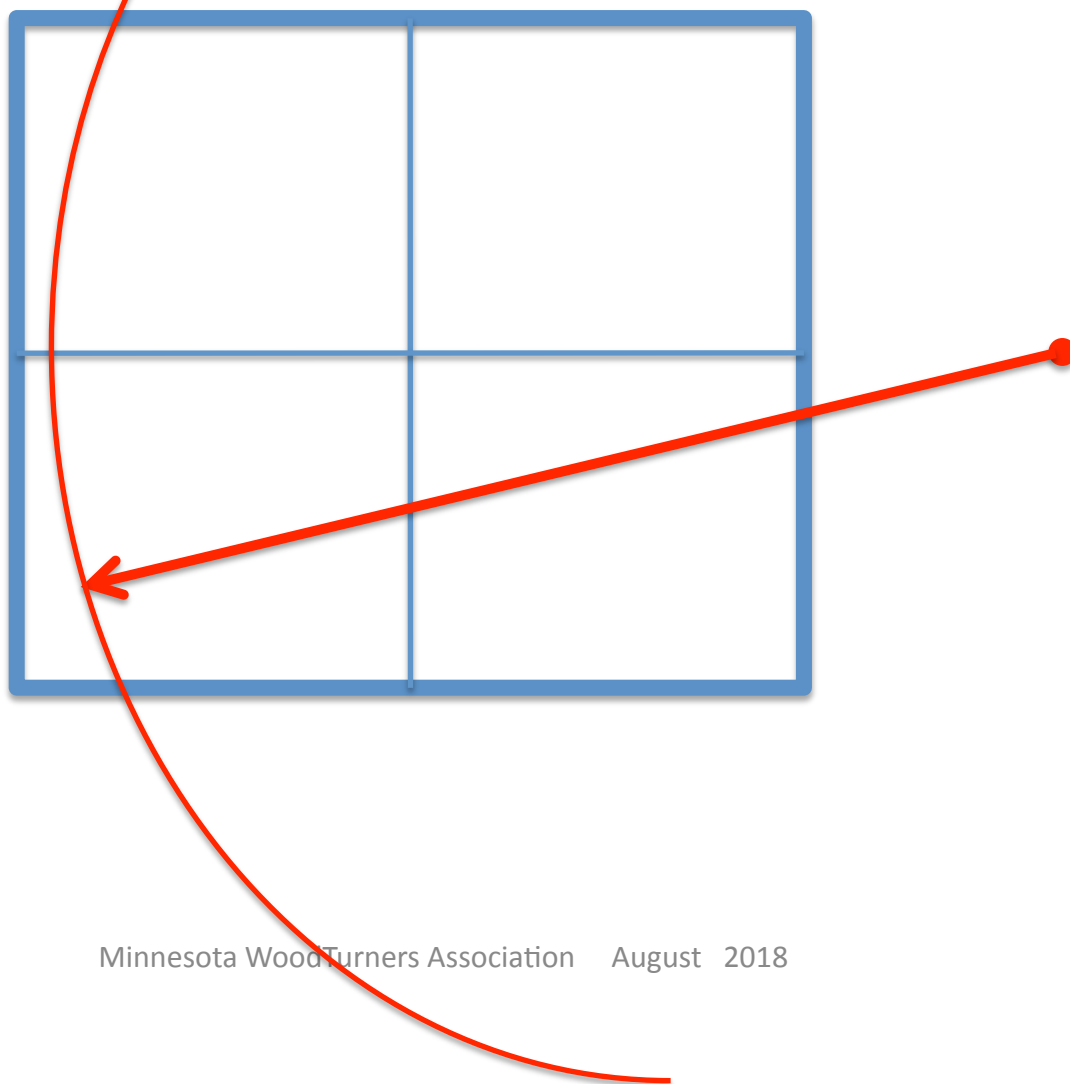
If templates are made of plexiglass and are transparent, the grain will be obvious and this will help in determining the orientation of the blank to be turned

The center is accurately  
determined and right angle lines  
are scribed

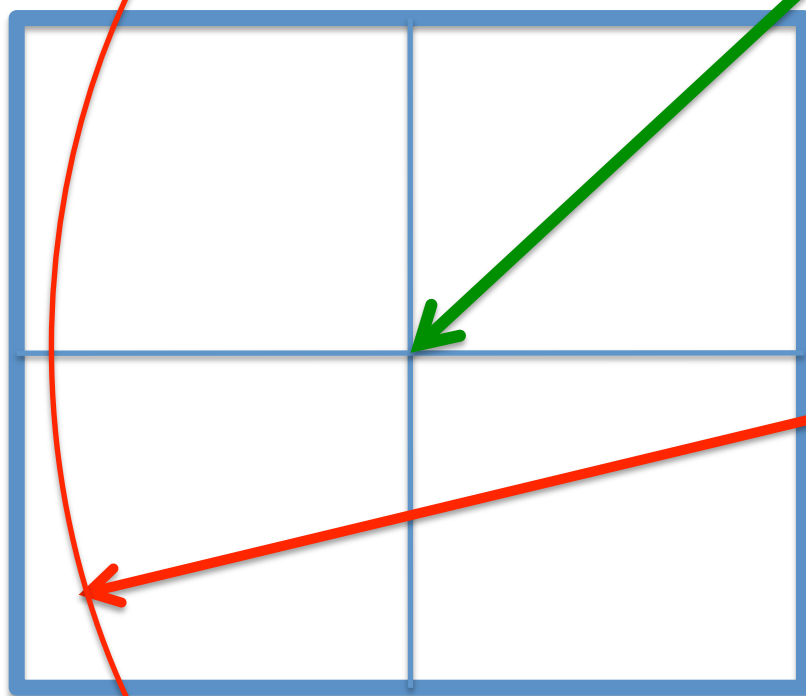




A center point is chosen outside the limits of the template to scribe an arc. The radius chosen will determine the curve of the edge of the platter.



Center accuracy is very important to getting all the corners to match



The blank can be attached to the drive with a vacuum chuck, recess or screw chuck



### Minimal tools needed:

- Band Saw or Jig Saw
- Scroll Chuck
- Parting Tool
- Bowl gouge
- Sandpaper
- A very bright light

A Negative Rake Scraper is ideal for smoothing the platter. Mike says it has changed his turning style.

Turning the Bottom:  
Options: ogee, round, etc.





Using a tailstock extension like this gives much more room to turn the bottom of the platter

The best cut is from the outside toward the center

Light cuts only on the outer edges; cutting air can lead to chipped edges

Clean up with the negative rake scraper



Turning the Bottom:  
Options: ogee, round, etc.

Working on the foot, use  
1200 rpm

Form a concave surface for  
stability of the foot

Decorations can hide the  
mounting method

Texturing: place outline on  
either side of the texture AFTER  
texturing, NOT BEFORE





Turning the top:  
Choose the preferred profile

First step: flatten the wings

Cut from OUTSIDE - IN

LIGHT CUT: Easy to chip out at  
the edge of the wings

Leave a hub in the center for  
support and to eliminate  
vibration when working  
on the wings

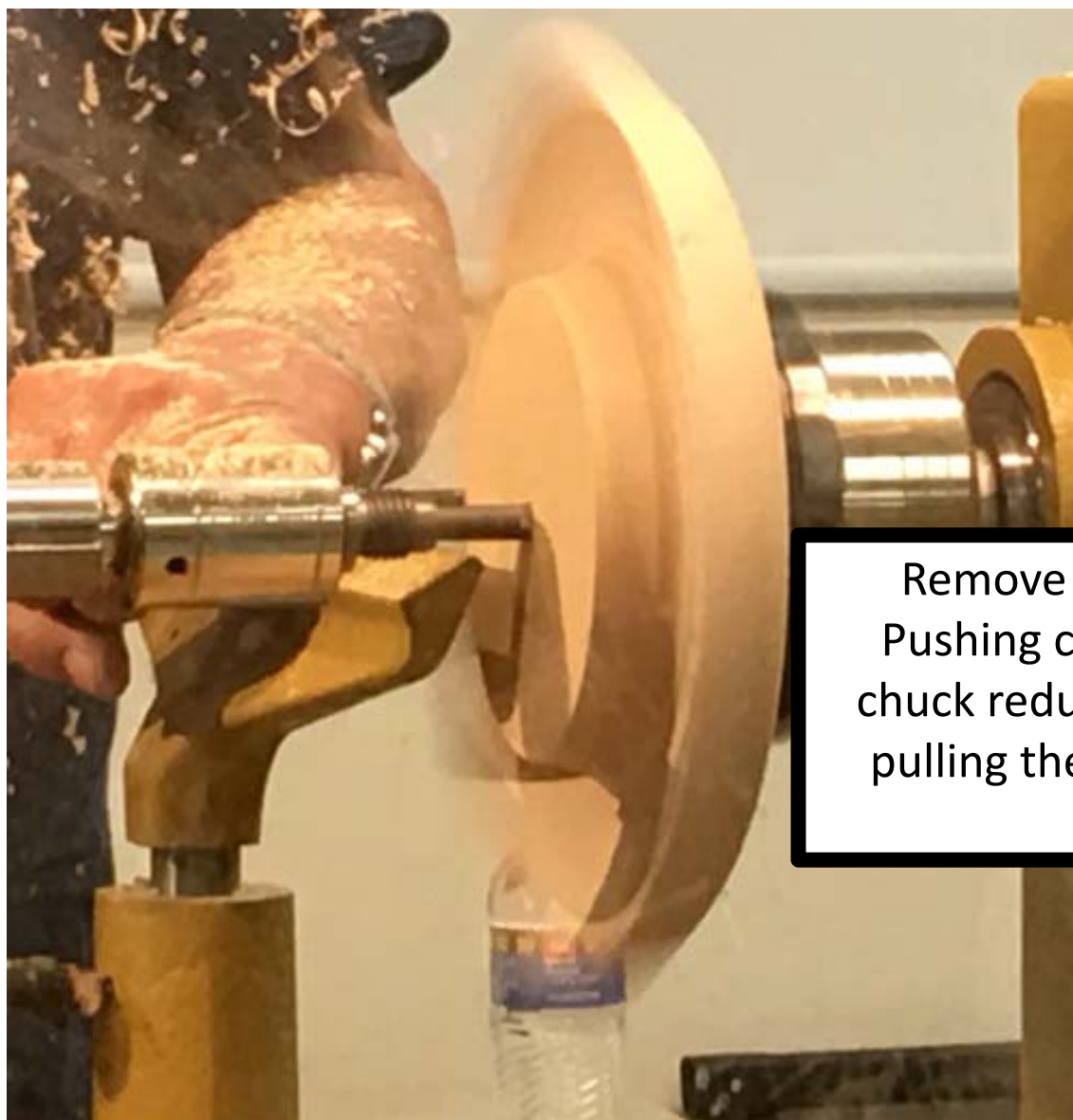


Early Hunter cutters were 12mm diameter; now the trend is to smaller cutters. Less surface is engaged in the wood resulting in minimal vibration and better quality of cut.

**Glen Lucas uses the special 6mm Hunter cutter for insides of bowls**



The Viceroy Hunter tool has a larger shank that is more stable with less vibration, but still with the smaller 6mm cutter



Remove the center hub.  
Pushing cutter toward the  
chuck reduces the chance of  
pulling the piece out of the  
chuck.



Mike used a Hollow Pro tool, designed by Mike Jackofsky, to measure bottom and wall thickness of the platter. The instrument goes between the chuck jaws to get to the bowl bottom.

Mike spent a lot of time discussing how to handle the tips of the platter. He recommends machining the tips completely with the center engaged to prevent vibration and chipping. He further recommends sanding these by hand while holding the piece on a finishing stand.



Thanks Mike for  
a great  
demonstration!

**John K. Jordan will send a  
detailed 14 page PDF  
outline of the technique  
with pictures and outlines if  
you request it and identify  
yourself as a member of  
MWA ([jordanjk@gmail.com](mailto:jordanjk@gmail.com))**



**“Kevern was joined to no one.  
He had no one to love or be  
loved by. Though this was to a  
degree occupational. Like the  
moon, a woodturner turns alone  
- - he accepted that it was  
largely a fault of character.”**

From the novel “J” by  
Howard Jacobson



# Member Challenge - PENS (page 1)

This month continues the Member Challenge being divided into 2 groups. The first group was BEGINNER/INTERMEDIATE. The second group was EXPERIENCED.



Jeff Luedloff is the Coordinator of the Member Challenge





## Member Challenge (page 2)



## Member Challenge (page 3)



1st Place Jimmy  
Robertson



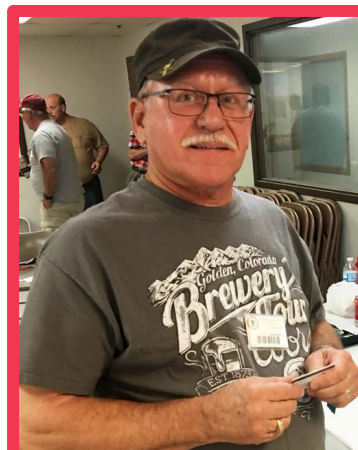
2nd Place Lyle Bye



3rd Place Reid  
Zimmerman



4th Place John Chance



5th Place Duane Betker



6th Place Dick Hicks



## Beginner/Intermediate



## Member Challenge (page 4)

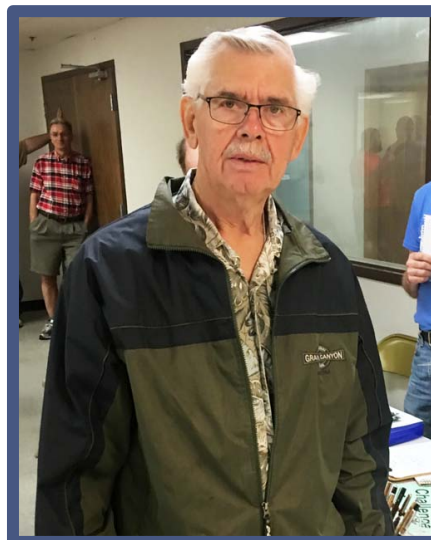
Experienced



1st Place Al Feist



2<sup>nd</sup> Place Steve Kingdon



3<sup>rd</sup> Place Bob Fodness



4<sup>th</sup> Place Lee Luebke



# Wood Raffle



Pres. Rick Auge  
draws the winning  
numbers



Large selection of good  
looking wood





# Welcome New Members!

**Jon Finnesgard**  
Faribault

**Jean Smith**  
Burnsville

**Don Moore**  
White Bear Lake

**Linda McDonell**  
Rosemount

**Bob Dammer**  
Maple Grove

**John Danielson**  
Plymouth

**Joe Vultaggio**  
Fairmont

**Jim Benson**  
Big Lake

**Jeff Stender**  
Green Isle

**Doug Carlson**  
St. Paul

**Phil Wendorf**  
Apple Valley

**TOTAL  
MEMBERSHIP**  
312



## Next Meeting

**Saturday, September 8** (1 week delay due to **LABOR DAY WEEKEND**)

**Location: Houck Machine Co. (newly air conditioned meeting room)**

**9:00 am**

**12811 16th Ave N Plymouth Mn 55441**

**DONUTS**

**Demonstration: TBA**

**• Check Website •**

**Member Challenge:  
“Squarish Platter”**



# Members' Mini Class

## Editor's Note:

This is the first of what we hope will be a series. Our aim is to have as many "Mini Classes" per year as possible. The demos by MWA members at the monthly meeting are expert and extremely valuable; many of us are just not comfortable enough to stand in front of the entire membership, use the unfamiliar "Mustard Monster" (as Dan Larson calls it) and demonstrate a technique.

A large percentage of MWA members have the knowledge and skills to impart woodturning craft to the other members. If these members who do not want to do a "stand-up demo" could do it through pictures and texts, the value to the club and individual members would be immense.

I am not an advanced or expert turner, but I will lead off this series with a "Mini Class" on an emerging bowl from a natural log. I hope it will be good enough that many members will be inspired to share techniques with us. They can be short or long. Don't think that everyone in the MWA knows everything; we can all learn from each other.

Mike Rohrer, Editor

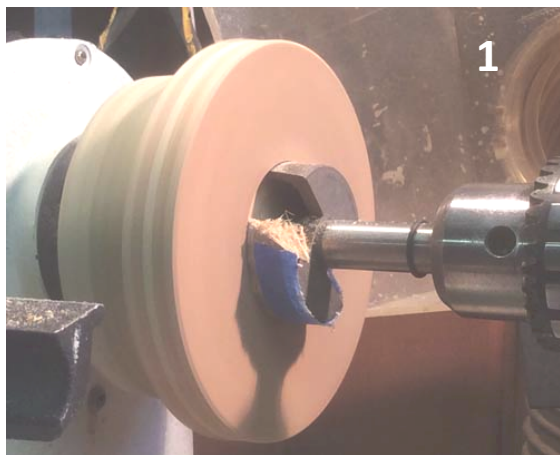




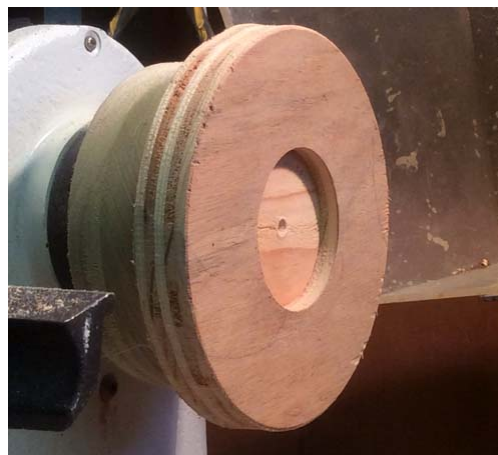
For this Mini Class I will show the steps to go from a log  
to a pair of emerging bowls retaining the natural bark







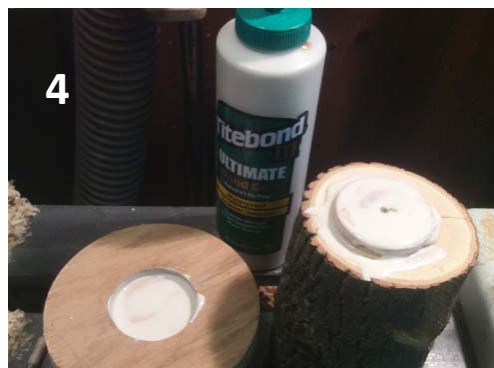
Mount a sacrificial disk slightly larger than the diameter of the log onto a wood chuck with hot glue or wood glue. Use a forstner bit to create a mortise to mount the log. In this case a 2" bit was used.



Mount the log between centers. Cut a tenon to fit mortise exactly.



Mortise & tenon ready for glue

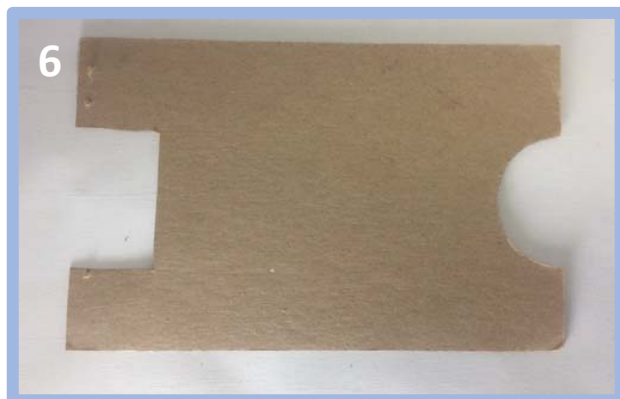


Hot glue or wood glue should work



Bring tailstock up for pressure as glue sets

Next step is cutting a hemisphere  
on the end of the log



Make a template. Left end is depth  
of initial cut; right end is finished  
hemisphere.



Use template to determine depth  
of cut for hemisphere



Template for hemisphere



The completed hemisphere  
and the flat end must be  
finished to completion at this  
time. The accuracy of the  
hemisphere is critical; it will  
determine the uniformity of  
the walls and the overall look  
of the emerging bowl.





11



Finished hemisphere and log end

Next step is separating  
the log from the plate  
and cutting the piece in  
half

12

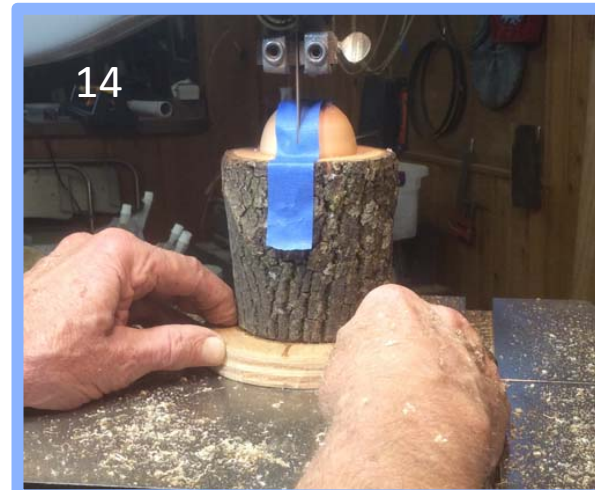


Log with completed hemisphere  
removed from headstock with the  
attached sacrificial plate

13



14



Center line is marked with tape.  
The plate gives stability and will  
be cut in half with the log



Next step is cutting the  
sacrificial base from the log



Log and sacrificial  
plate cut in half



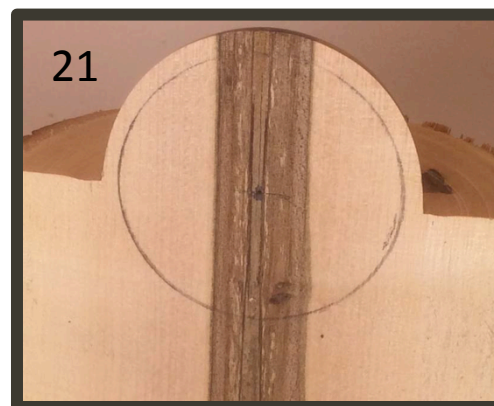
Sacrificial plate is cut off



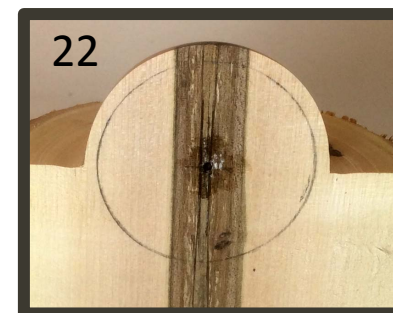


Log and hemisphere cut in half

Next step is mounting the half  
log for turning the inside of the  
bowl



Exact center and outline of  
bowl marked

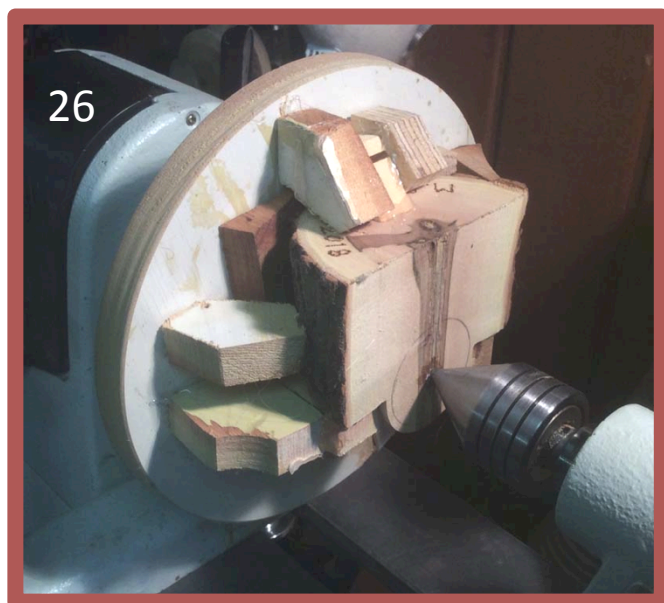


Because it is in the pith,  
the center is reinforced  
with CA

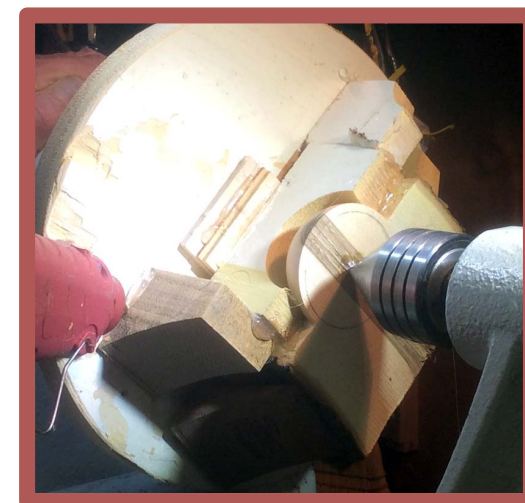


The half log must be supported level, accurately and solidly.  
Because we don't want to use a lot of hot glue on the bark  
or finished area, we use a LOT of support blocks.

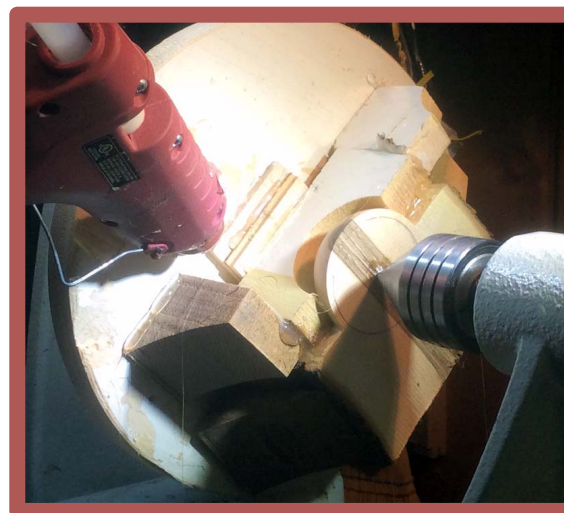




Hot glue sticks are cheap.  
Use LOTS

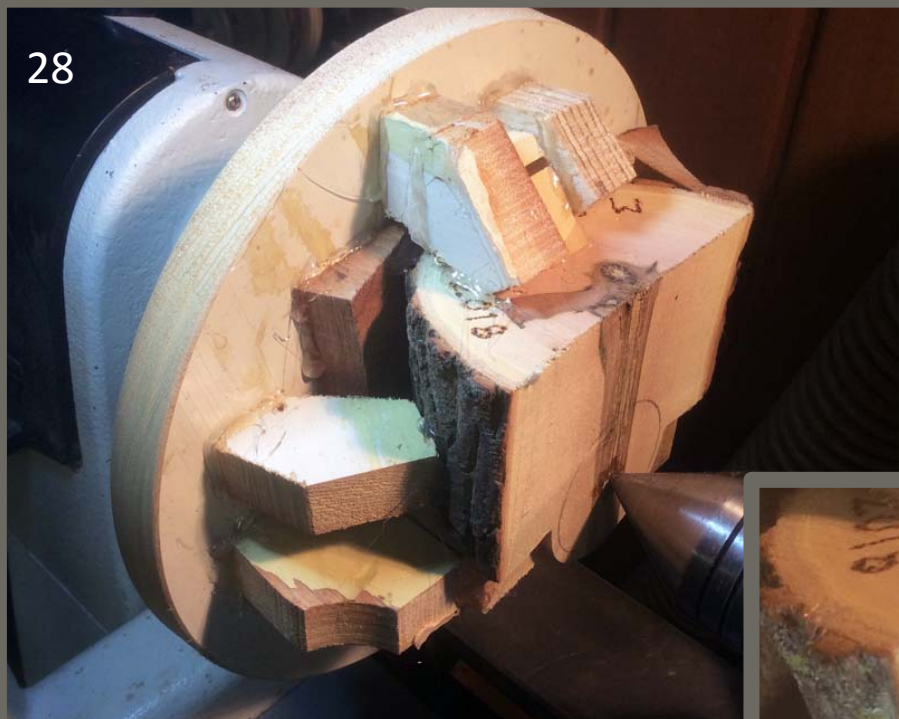


The half log with all of its supports is held accurately in place on a wood disc attached to the head stock with a faceplate. The point live center in the tailstock insures the accurate centering of the half log and its supports.



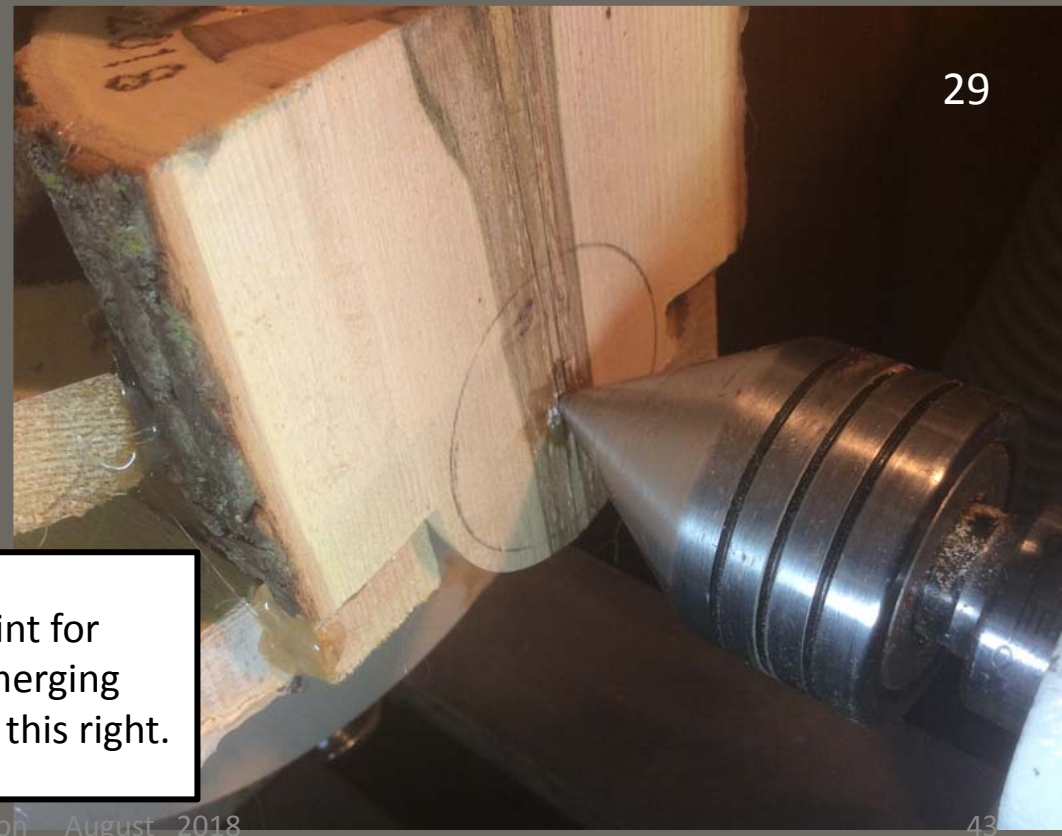


28



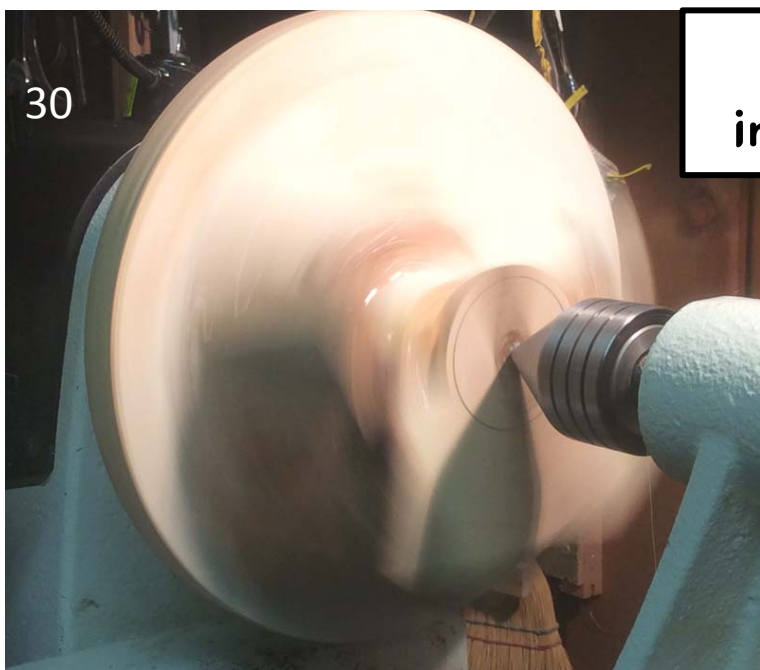
The half log with all of its supports held with hot glue

29



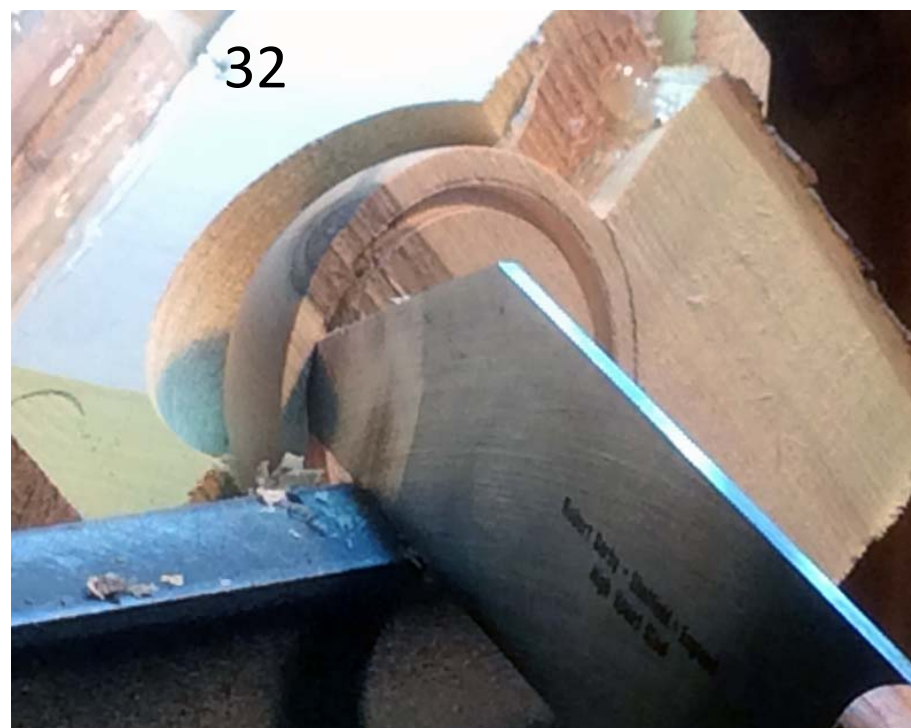
This is the MAKE or BREAK point for accuracy of the width of the emerging bowl's wall. Take your time to get this right.





Next step is turning the  
inside of the emerging bowl

Turn the lathe on at a relatively low  
speed to check everything, then  
speed it up to cutting velocity

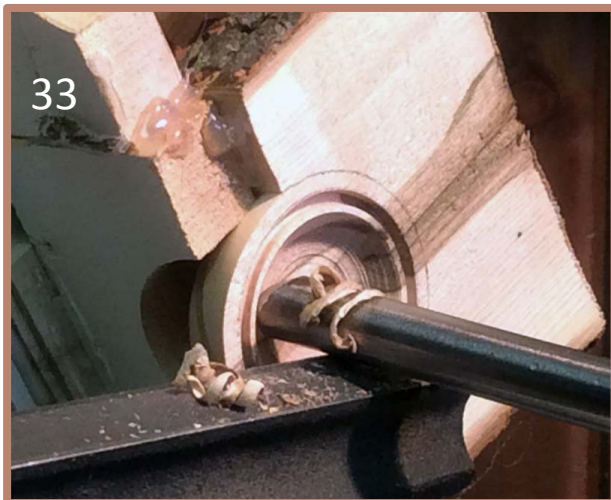


Define the bowl wall with a thin parting tool

Pull the tailstock away and draw  
the width of the wall of the bowl







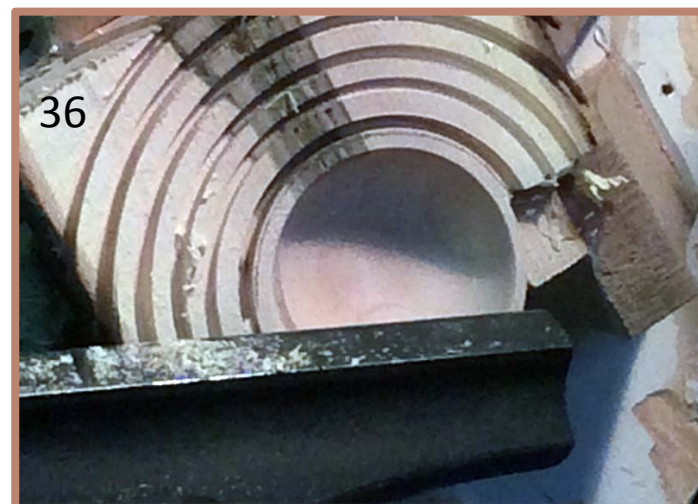
Turning the inside of the bowl



Scraping the inside of the bowl



Outline the outside wall of the bowl and determine the height of the bowl above the bulk of the log with a thin parting tool



Groove the remainder of the flat surface to make the removal less forceful to the hot glue attachments



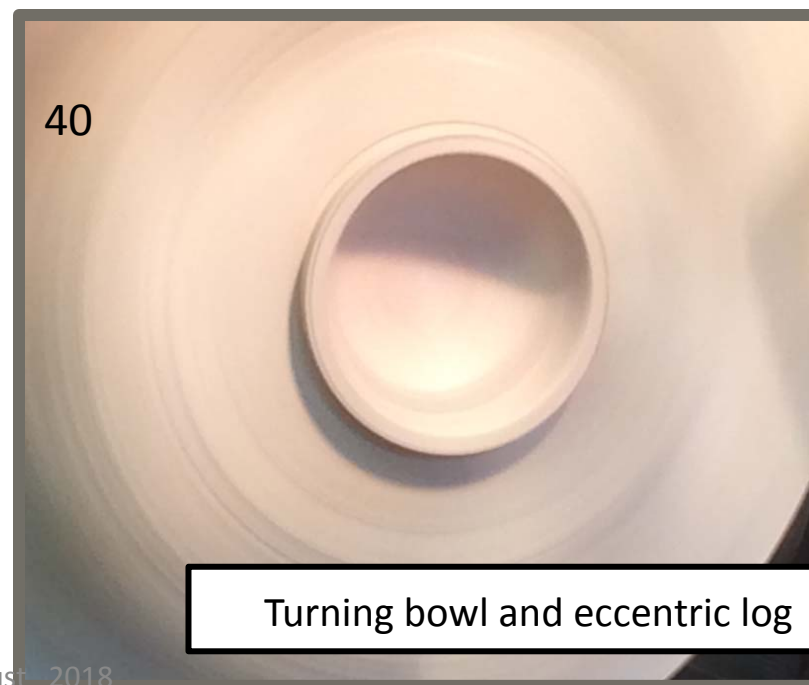
Bulk removal of the log to "raise" the bowl



Use of the profile gouge to sharpen joints between bowl and log



Scraping surface of the log



Turning bowl and eccentric log



41



Ready for final sanding

42



Sanding with soft paste wax







Sanded and finished; still  
attached to wood faceplate

Supports are removed;  
final waxing



Acknowledgement to Alan Stratton on "As the  
Wood Turns" for this method and the  
inspiration to do this Mini Class



I hope you found this first “Members’ Mini Class” worthwhile and I strongly encourage other members to contact me to contribute their plans for woodturning techniques or projects.



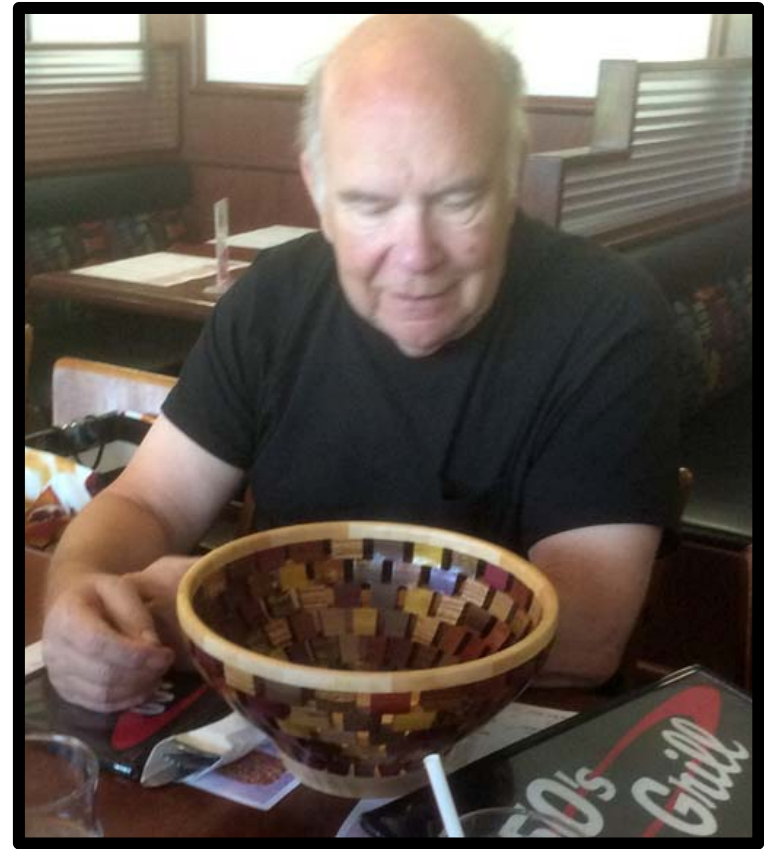


## Area & Regional Meetings & Gatherings

Hamburger Club

### •Hamburger Club

The Hamburger Club met at the 50s Grill on Wednesday, July 18 with a touch of sadness. This was the first Hamburger Club meeting that Gar Brown had not attended in years. Gar's passing spread a somewhat poignant mood among those attending, but everyone knew Gar would be there if he could and would be happy we woodturning friends were gathering for fellowship. Tom Peter, Mike Hunter, Joe Zwirn, Lee Tourtelotte, Steve Mages, Mike Rohrer, Bob Puetz and Steve McLoon gathered for lunch and discussions of woodturning.



Joe Zwirn and another striking segmented bowl



## Area & Regional Meetings & Gatherings

Hamburger Club



Joe Zwirn dazzles the Hamburger Club monthly with his innovative segmented bowls

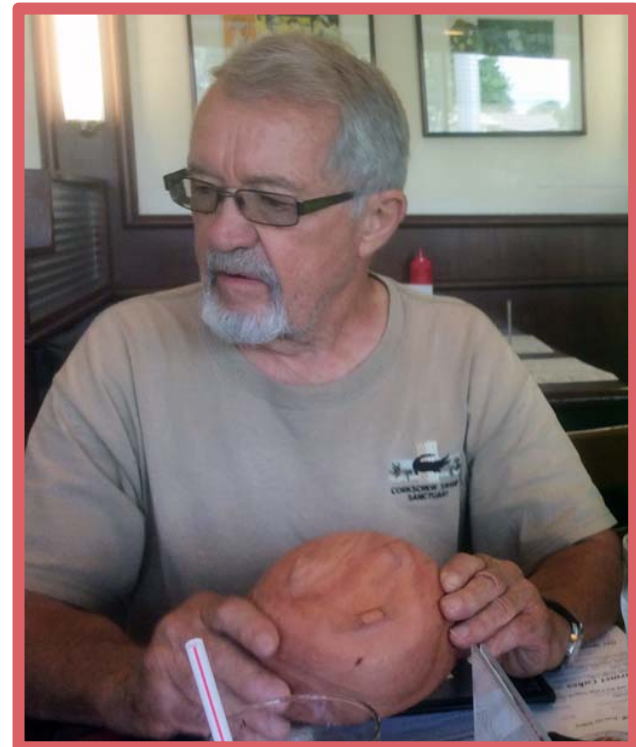


# Area & Regional Meetings & Gatherings

Hamburger Club



Joe Zwirn, Bob Puetz, Lee Tourtelotte, Steve Mages and Steve McLoon enjoying fellowship and woodturning discussions



Ken Hallberg examining a bowl by Tom Peter of photo-reactive African sumac



Joe Zwirn and Bob Puetz





# Area & Regional Meetings & Gatherings

Hamburger Club



Ken Hallberg's insert bowl  
*a la* Trent Bosch



Mike Rohrer admiring  
a natural edge bowl  
by Tom Peter



Tom Peter, Ken Hallberg  
& Mike Hunter

Lee Tourtelotte brought a  
hollow form and discussed  
using the Trent Bosch Visualizer  
& Stabilizer





# Area & Regional Meetings & Gatherings

Hamburger Club



Tom Peter with photo-reactive African sumac



These images are the same bowl



Some natural edge bowls by Tom Peter



## Area & Regional Meetings & Gatherings

Hamburger Club

Beginning with the meeting September 2018, we will move our luncheon to generally the 3rd Thursday of the month. We meet at 11:30 am with lunch to be ordered about 11:45 am.. No topics ... just an open dialogue of woodturning friends.

Any member that would like to be included on the mailing list please send an email to

[MLH55410@aol.com](mailto:MLH55410@aol.com).

50's Grill, 5524 Brooklyn Center



Gar Brown and his redwood burl bowl at the June meeting



## Area & Regional Meetings & Gatherings (cont'd)

### Lake Johanna Sub Group

The newest sub group, organized by Gordon Fay, did not meet in July. At the August meeting Lee Tourtelotte and Dan Larson demonstrated hollow turning.



Gordon Fay and Chad Anderson



Dan Larson demonstrates hollowing as  
Mike Lucido observes





## Lake Johanna (cont'd)



Dan Larson and Lee Tourtelotte did a presentation and demo on the subject of hollowing. Dan demonstrated 5 different hollowing systems which he owns, including the original elbow tool, an early articulated system, the Jamison system and the Trent Bosch Stabilizer. Lee assisted and demonstrated his Trent Bosch Stabilizer with the Visualizer, camera and monitor. They also showed several variations of hollowing hand tools including the Michael Hosalak hook tool, several Mike Hunter carbide tools and several deep hollowing, sanding and wall-thickness gauge accessories.

Members interested in meeting other turners from our club in an informal setting in Arden Hills, the address is [3355 Lake Johanna Blvd, Arden Hills MN](#) at the big white house on the corner of Stowe (enter from Stowe Ave).

The next meeting will be Tuesday, Sept. 18, 2018 - 1:00 – 3:00 pm. The discussion and demonstration will explore the popular coring tools, the McNaughton, the One Way and the Woodcut coring systems.





## Area & Regional Meetings & Gatherings (cont'd)

Plymouth Area



### PLYMOUTH AREA SMALL GROUP

Jeff Luedloff, Roy Estes, Al Feist, David Struck, Jerry Hanscom, Wayne Johnson, Lee Luebke, Steve Binek, John Danielson, and Steve Mages attended the meeting on August 15. General discussion including pros and cons of Hunter tools vs Easywood, turning urns and hollow forms, and finishes, particularly waxes.

Pieces turned by Plymouth group members from the Milo wood indigenous to Hawaii brought by Mike Hunter



## Area & Regional Meetings & Gatherings (cont'd)

Plymouth Area



Pieces turned by Plymouth group members from the Milo wood indigenous to Hawaii brought by Mike Hunter



## Area & Regional Meetings & Gatherings (cont'd)

Plymouth Area

### PLYMOUTH AREA SMALL GROUP

Next Meeting:  
Plymouth Area Woodpeckers  
Wednesday,  
September 19 at 7:00 pm

The usual meeting place is [10501 Belmont Rd, Minnetonka](#).

Steve Mages [952-544-5286](#)

We will have the usual format, sharing and discussion. Bring your suggestions. If you have a tool to show, demo, or have demoed, bring it along.



# Gar Brown



If anyone would like to relate a short personal “Remembering Gar” story, perhaps where he may have helped with a particular woodturning problem or exhibited his high intelligence, kindness and generosity, or shared any of his lifetime experiences in any number of ways, please send them to Lee Tourtelotte [leetourtelotte@icloud.com](mailto:leetourtelotte@icloud.com) or Mike Rohrer [mdrprof@gmail.com](mailto:mdrprof@gmail.com) within the next month. We are going to try to collect these and include them in a future newsletter. Remembrance donations are also much appreciated, sent to the two hospices as designated earlier by Gar’s sons, Eric and Todd Brown.





## MWA Future Classes

- **MENTORING** – Steve Mages is looking for members who are willing to mentor other members. If you want more information, contact Steve at [smages@juno.com](mailto:smages@juno.com).
- Shop Classes – We are in need of instructors and ideas to expand the scope of our classes beyond our normal bowl and bowl variation classes. Please contact Dan Larson.
- Saturday, Sept. 15, 9:30 am – Wounded Warriors Class. See MWA website for details
- Tuesday, September 19, Sharpening Class– See MWA website for details
- Saturday, September 22, 9:00 am – 3:00 pm - Travel Mug class by Greg Just. See MWA website for details



## MWA Future Classes - Professional Demo



Eric Lofstrom

Professional turner, Eric Lofstrom, will present a demo from 9:00 am to 3:00 pm on Saturday, Oct. 6. This will be FREE for members and \$45 for non-members. Members will not have to stay the entire session if they need to leave at noon. The Member Challenge, the Tool & Wood raffles and nominations for officers will be conducted during the breaks.



Eric will present a limited attendance, hands-on class on Friday, October 5 Starting at noon



“As an artist, I aim to create clean-lined forms with minimal distraction. I use grain, color, and texture to invite an intimate conversation with my work.”

Visit Eric's website at [www.ericlofstrom.com](http://www.ericlofstrom.com).



## Editor's Notes

- I want to thank Lee Tourtelotte and Pete Bryant for covering the August MWA meeting for me with photographs and notes. I was enjoying a few weeks in my home state of Michigan with family get-togethers, mostly very close to Lake Michigan, my favorite body of water in the world.
- I will be contacting members to contribute to the Members' Mini Class, but please contact me if you would be willing to present any woodturning techniques or projects in this forum. You just need to get photographs and text to me and I'll put them in article form for a future newsletter. The contributions can be of any size; anything that will be of help to woodturners is desired and welcome
- Please give me any comments for improvements or additions to the newsletter

*Mike Rohrer, Editor [mdrprof@gmail.com](mailto:mdrprof@gmail.com)*

