



Minnesota WoodTurners Association

A LOCAL CHAPTER OF THE AMERICAN ASSOCIATION OF WOODTURNERS



Mini Newsletter No.45

Minnesota Woodturners Association

BOARD MEMBERS

Officers

PRESIDENT Lee Luebke

VICE PRESIDENT AND LIBRARY

Janese Evans

TREASURER Mark Debe

RECORDING SECRETARY

Rosanne Gold

Directors

Reid Zimmerman - 501c3
Coordinator

Marc Paulson

MEMBERSHIP DIRECTOR

Ken Crea

TECHNICAL SUPPORT

Dick Hicks – Audio Visual &
IRD Technical Advisor

Marc Paulson

AAW REPRESENTATIVE & DEMONSTRATIONS

Linda Ferber

OTHER STAFF SUPPORT

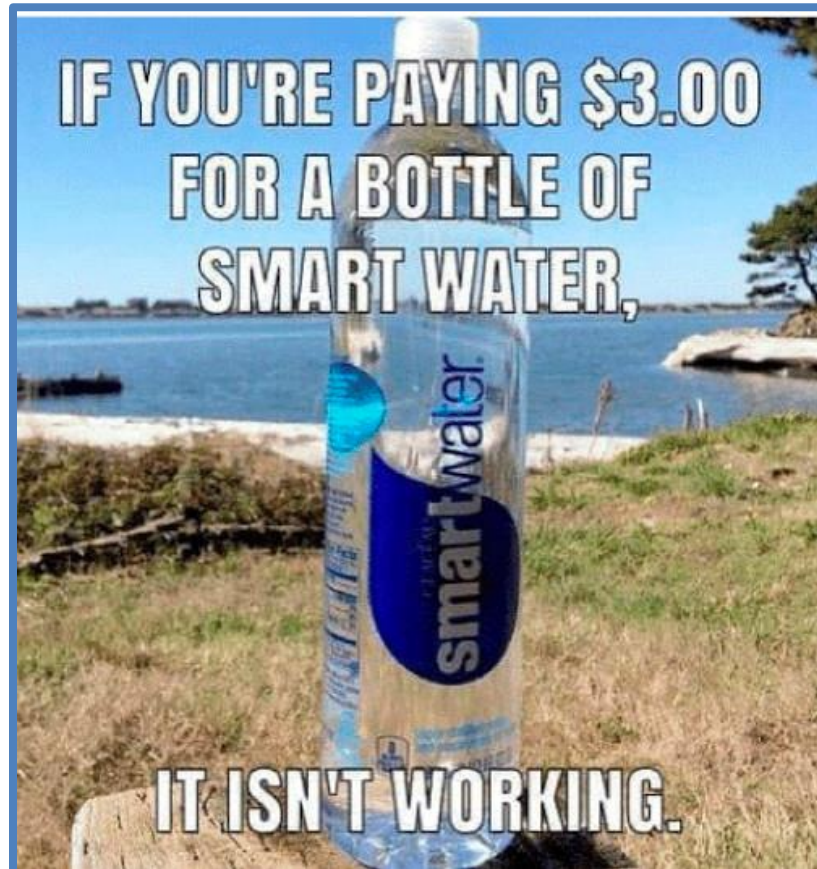
Bob Meyer - Group Purchasing

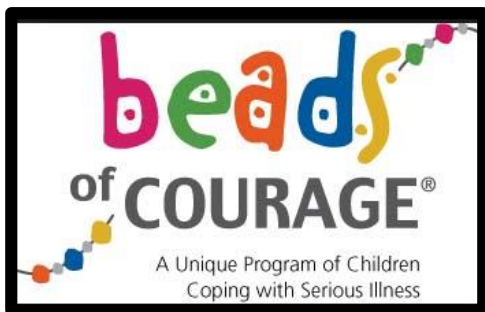
Dan Larson – Classroom & IRD
Coordinator

Mike Hunter – Professional
Demonstrations

Paul Laes – Sales at Meetings

Mike Rohrer - Newsletter





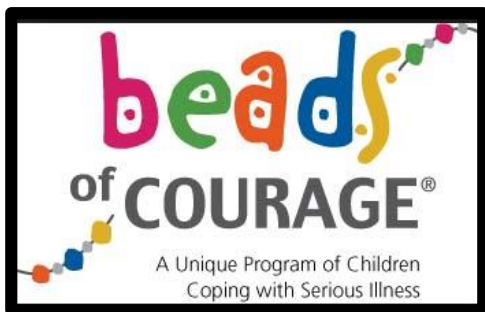
Beads of Courage

Joe Zwirn



3 Beads of Courage boxes from kits provided by Jim Jacobs for Bob Jensen's memorial





Beads of Courage Project to Honor Bob Jensen – kits provided by Jim Jacobs

Bob & Diane Puetz are asking those who have volunteered to make these special boxes to do 3 things:

1. **Finish** the boxes as soon as you reasonably can
 2. Get the **boxes to Bob & Diane** in a reasonably short time after you finish them (see list of drop off sites)
 3. **Take pictures of your finished boxes** and send them to Editor Mike Rohrer so we may put the pictures in the newsletter and have a photographic history of this special project.
- If you have any questions, please contact Bob or Diane at: bobpuetz@yahoo.com

- | | | |
|----------------------------|--|-------------|
| 1)North metro: Diane Puetz | diane.puetz@yahoo.com | East Bethel |
| 2)North East :Bob Meyer | rjmbob@comcast.net | Lino Lakes |
| 3)West metro : Steve Mages | smages@juno.com | Plymouth |
| 4)East metro : Mike Lucido | mike.s.lucido@gmail.com | Woodbury |
| 5)South metro: Jim Jacobs | woodmanmn@aol.com | Hastings |

It would be good if you would confirm via email when you will be bringing the finished Beads of Courage boxes



Heart-shaped Natural Edge Bowl – Great for Valentine's Day



Produced, directed, filmed, edited, shop swept up by
Dan Larson

Continued on next page



Dan Ernst introduces the project that he claims will make a great Valentine's Day gift



They can be BIG or small



For this demo Dan starts with a cherry crotch



Dan has indicated in yellow the extent of the bowl



After cutting the crotch lengthwise, Dan has marked concentric circles; his choice for a bowl is the red circle



Dan marks the circle on the bark side where he will cut the bowl's outline with the bandsaw



Cutting the marked circle



Drilling for the 2-prong drive with a 1" forstner bit, which will fit tightly



Take the pin out of the tailstock to make adjusting easier

Continued on next page



For the 3 extensions or “branches”, the point as indicated in the left picture **MUST** be in the same plane. Move the blank between the head and tailstock to align the 3 points.



Begin to flatten bottom



Flatten the bottom



Adjust and align the 3 points again



All 3 points in a plane



Flatten for a spigot



Use pivot & pull cuts



Start shaping outside



Finish bottom profile



Shear scraping to smooth the bottom





Begin sanding



Reverse & begin hollowing



Line up bevel with the outside of the bowl



Leave the center for stability



Center bulk



Use 40-degree gouge for the central bulk

Continued on next page



Finish cutting the center



Negative rake scraper to smooth inside

The finished
"heart" bowl
will be given
away in a
drawing of all
attending the
zoom

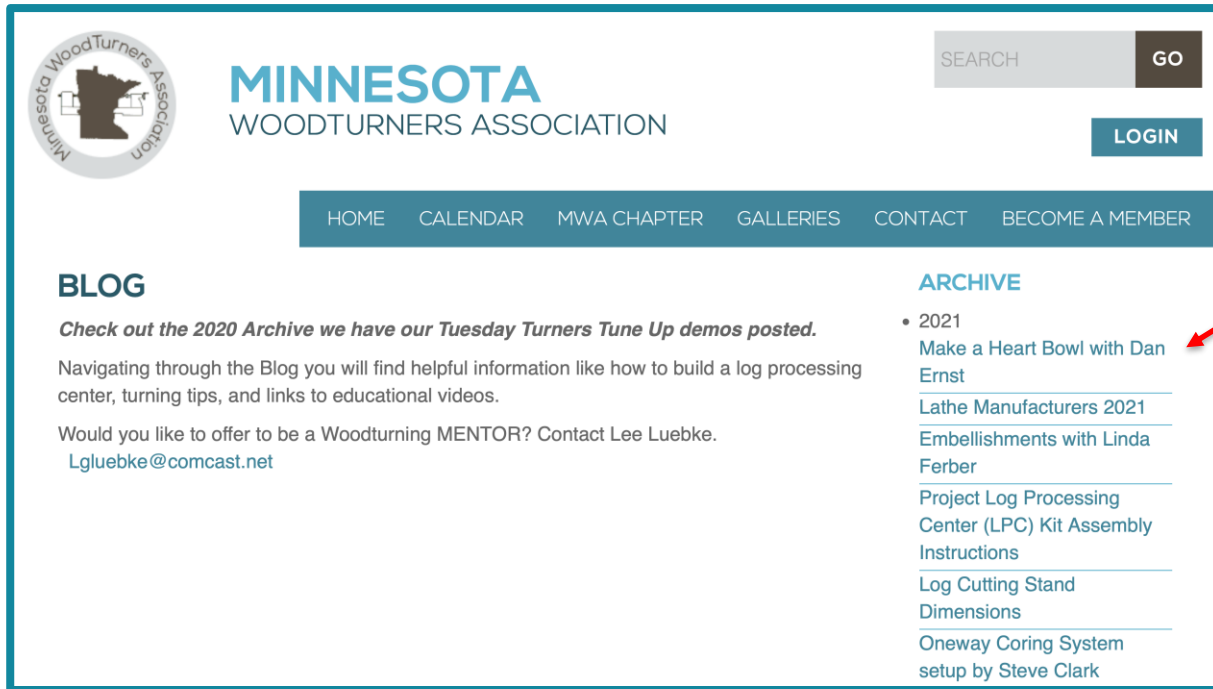


Thanks, Dan and
Dan for another
excellent demo!



Winner! Dick Humphrey, Isanti

It is best to see Dan's demo in its entirety. If you would like to see it for the first time or see it again, it is posted on the MWA website.



MINNESOTA
WOODTURNERS ASSOCIATION

SEARCH GO

LOGIN

HOME CALENDAR MWA CHAPTER GALLERIES CONTACT BECOME A MEMBER

BLOG

Check out the 2020 Archive we have our Tuesday Turners Tune Up demos posted.

Navigating through the Blog you will find helpful information like how to build a log processing center, turning tips, and links to educational videos.

Would you like to offer to be a Woodturning MENTOR? Contact Lee Luebke.
Lgluebke@comcast.net

ARCHIVE

- 2021
 - [Make a Heart Bowl with Dan Ernst](#)
 - [Lathe Manufacturers 2021](#)
 - [Embellishments with Linda Ferber](#)
 - [Project Log Processing Center \(LPC\) Kit Assembly Instructions](#)
 - [Log Cutting Stand Dimensions](#)
 - [Oneway Coring System setup by Steve Clark](#)

Under MWA CHAPTER, drop down to BLOG, go to ARCHIVE, 2021 and click on "Make a Heart Bowl with Dan Ernst"



Instant Gallery

Mike Rohrer

Anyone who attempts to cut a log lengthwise to make a wing bowl or any sort of crotch bowl should never attempt it without using Dan Ernst's sled

From my shop this week



Instant Gallery Extra from Mini Covid Newsletter

#17

Dan Ernst' Sled for Cutting Logs Lengthwise



Dan then showed us a great sled for cutting the log directly through the pith safely on the bandsaw with a fixed end & sliding end



He marks the pith on both ends and then cuts exactly through the pith



The pith is lined up so it will be cut through by the bandsaw for the length of the log

Continued on next page



Instant Gallery

Dan Ernst



Long screws are screwed into the log on each end just enough to hold it



The moveable end functions in a T-Track



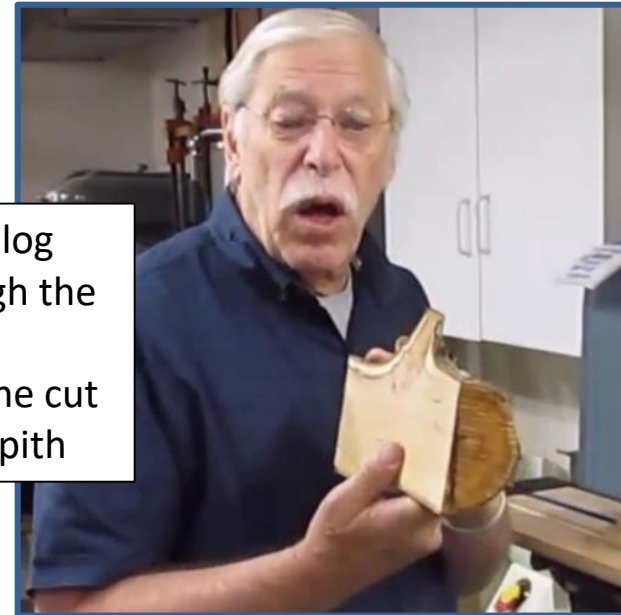
Uprights should not be too high for your bandsaw

next page





Running the log safely through the bandsaw, controlling the cut through the pith



Continued on next page

Instant Gallery

Julie Abbott



Julie took advantage of Dan's offer he made during the TTTU of a piece of sugar maple crotch to use for a heart bowl. On her first attempt she produced this absolutely beautiful bowl.





Mike's 1st attempt at heart bowls. He says, "I used a small crotch the first time and in trying to make it a bowl shape found out it was extremely hard to smooth and sand inside the vertical, curved areas. I really have something to strive for to match Julie Abbott's accomplishment."

Instant Gallery (cont'd)

Linda Ferber



Pictures of the 3 collaborative projects in which Linda was involved in last week's WIT International Collaboration Project

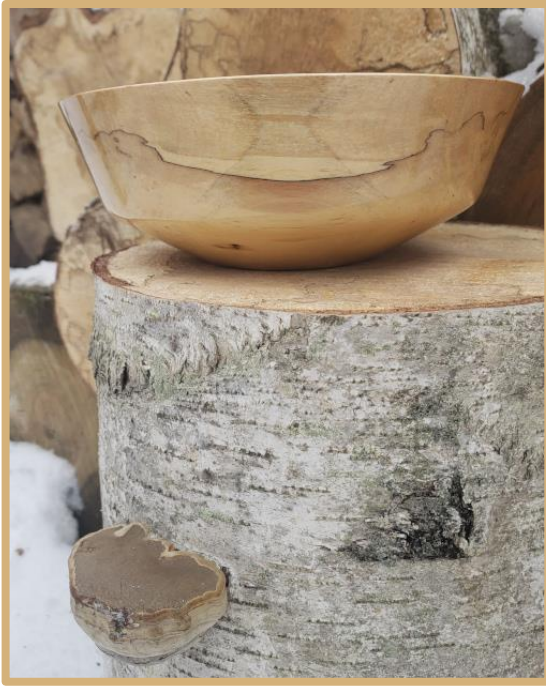




Here is a basket weave illusion platter I recently finished, diameter about 9". The circumferential beads are done on the lathe with a beading tool. Then the radial lines are drawn with a shop-made indexing tool, following that the radial lines are burned individually off the lathe. Then the tiny segments are colored individually. There are over 4000 segments in this platter on each side. The pattern is repeated on the back. Maple with pyrography and India inks.

Instant Gallery (cont'd)

Julie Abbott



This is a spalted birch bowl that I put entirely too much time and work into. The wood was getting quite punky, so I used wood hardener and multiple layers of sanding sealer as I did finish cuts and sanded to save the wood. This came from a Sunday walk through a friend's property up in Staples. You can see the remaining logs in the pictures. Finished with wipe on poly, approximately 7"x2.5".



Monthly Challenge



New 2021 Monthly Meeting Challenge.

We are going to start up the monthly challenge.

The challenge will start in February and sponsored by Woodcraft. We will have some \$10.00 Woodcraft gift cards to give out through a random drawing giving all an equal chance to win. Number of cards to be determined.

To be included in the gift card drawing, pictures and description should be submitted via email to Mike Rohrer mdrprof@gmail.com *once finished but no later than one week before the Monthly Meeting date.* All have an equal chance at winning a gift card.

It is not necessary but if you include a picture of the raw material it will add some interest as the Challenge Pieces are posted.

You received a notice for the new Monthly Challenge. The Challenge for February is a turning that starts from plywood or a 2x4. Please send me pictures of your Challenge turning as soon as it is finished. The deadline is the Saturday before the next meeting, so the deadline for the February Challenge is Jan 30.

There is no judging; prizes will be given by a drawing. As soon as Mike Rohrer receives pictures of your challenge, your name is put in the pot to be drawn (electronically, by some random choosing program).

Continued on next page



Monthly Challenge February (cont'd)

Jim Jacobs



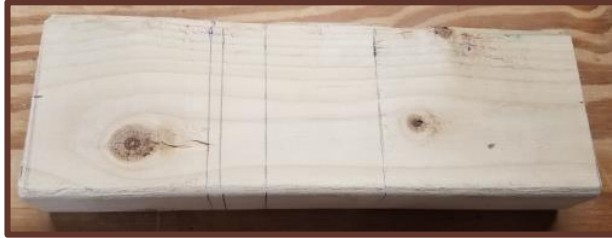
My challenge piece is compound mitered, carved and painted. This could have been done by laminating layers, but that's not a challenge.



Monthly Challenge February (cont'd)

John Campbell

I took the challenge literally and turned a toy truck out of a 2x4. Wheels were purchased.



Blank



Rough-turned



Ready to split on guide board



Split on guide board



Split



Finished



Monthly Challenge February (cont'd)

Larry Thomas



A plywood wine glass stem. Since plywood lamination has little strength when turned this way, I added a steel "spine" (nail) inside the narrow portion of the turning.



Monthly Challenge February (cont'd)

Rude Osolnik

World famous turner, Rude Osolnik, turned this bowl in 1975, but it would have fit our Challenge criteria

In 1975, Osolnik found a new material in birch plywood. He glued a stack of plywood planks and walnut veneers into a block. The bowl was made for Renwick Gallery's "Craft Multiples" exhibition, which featured functional objects that could be duplicated in production runs. Ironically, this exercise began a series of one-of-a-kind plywood bowls that are among Osolnik's best known works.



Milk Paint

Mark Palma

I wrote this article for the WI club I belong to and they agreed I could put it in the MWA newsletter as well.

I did not fully appreciate how much I received out of our club until the meetings were brought to their temporary close. Oddly, that may be the lesson for each of us in 2020 that we only appreciate the freedoms and privilege to life in America when there is some part of it disrupted.

One of things I have appreciated this last year was the tireless work the leadership of this club by keeping us connected and creating this great ongoing dialog going between us. So in a small way to say thanks, I decided to write something for the newsletter. I hope one or more of you will follow suit and do the same.

Milk Paint Bowl Project

I recently completed a small project that I thought I could share with you, a group of red oak cereal bowls with a milk paint finish. I have been moving towards making things that are usable in daily life and don't just sit on shelves. These bowls were a recent series of work in that overall shift in my focus.

Continued on next page



Milk Paint (cont'd)

Mark Palma

- First, I wanted them to look hand made. They very slightly in shape and dimensions but look like a set. So that meant no templates or guides, just turning them by eye. I didn't measure anything.
- Secondly, I wanted them to stack. Cupboard space is always at a premium so it seemed that they needed to be something that would fit in their allocated space.
- Third, they should look like, well a cereal bowl. Cereal bowls are stable, so they have a base wide enough so that they do not tip over. They are big enough to hold food, but not so big that the food is dwarfed by the bowl. They are tough enough to get knocked around, but not so chunky that they are hard to grab.
- Lastly, they should brighten the table, but not overpower me before I have had coffee. I thought the muted colors of the milk paint would add that dimension and offer something that became even more pleasing over time as the natural irregularities and wear characteristics of milk paint added to the charm. The goal was to create something that would be used, not something to be stacked and dusted.



Milk paint packaging



Dry milk paint

Continued on next page



Milk Paint

Mark Palma

I made a prototype bowl and brought it into the house about 9 months before the project. It has been used every day, washed and dried and kicked around the kitchen. The prototype taught me several things that were helpful.

- Wooden bowls were practical for daily use.
- The rim needs to be rounded and allow entering and exiting the bowl with hands and utensils with out a sharp edge.

- The bowl shouldn't be more than 2 – 2 ½ inches deep inside.
- The base needed to be at least 40% of finished diameter, but not more that 50% so that it was easy to pick up and handle, yet stable.
- Watco Danish Oil didn't wear out over 100+ washings and still looks fine.
- Sanding past 400 grit didn't make a better daily use bowl.

Continued on next page



Milk Paint

Mark Palma

In designing the bowls I chose a milk paint because I like the patina that milk paint creates on wood and I liked the challenge of mixing powdered paints to create the muted colors I was looking to achieve. Milk paint also allows crisp masking without bleeding s unlike dyes it allows a very nice line which I thought would add interest over time to the work.

As for wood specie I spent some time thinking about options. Maple bowls work out well in the kitchen. The prototype bowl was spalted birch, and although it is fine, birch didn't seem as strong and durable. Although the prototype survived a few drops to the floor, I was always surprised when I picked it up and it wasn't cracked. I gravitated towards Ash or Oak and settled on Red Oak. I think Ash, White or Red Oak would have all been fine.



Bowls being painted

Continued on next page



Milk Paint

Mark Palma

Making the Bowls

The bowls are approximately 6 inches across at the rim, and 2 ¼ inches in overall height. The wall thickness is around ¼ inch uniformly though the vessel, and the dovetail tenon on the bottom remains to be the base of the bowl (it is 1/8 inch high). The bowls have a rounded soft rim, are slightly thicker at the rim than right below to allow for easy handling.

After turning a dozen bowls, I masked off the outside of the rim with automotive grade ¼ inch masking tape (to get a great masked line on the compound curve around a bowl), and then masked off the inside with regular painting tape. The goal of the masking was to create crisp contrast between the wood and the paint. Watco danish oil makes red oak come alive and really shows off the grain.



Read the instructions!

Continued on next page



Milk Paint Mixing and Application

I chose traditional powdered milk paint from the Old Fashioned Milk Paint Company. Their powdered milk paint is in historically correct hues. Come in powder form, just as milk paint used to be made, can be intermixed to create custom colors and hold tenaciously to bare wood. I have used it before and it takes a little skill to make it work well, but I love the results and I think its worth the work.

The four colors used for a base was Lexington Green, Soldier blue, Barn Red, and Marigold Yellow. Each was cut with equal parts Oyster White to create a more muted hue. Mixing each with about an equal part water (add slowly and sneak up on the final consistency of heavy cream). A yogurt jar is good choice. Only mix enough for one coat, as milk paint doesn't keep once mixed. Let them set for 5-10 minutes (time for a coffee break) and then mix again. It should have no lumps, so mix thoroughly. Use a disposable brush, as you cannot clean milk paint off brushes very effectively. Put on an apron and disposable gloves so that you keep it from sticking to you and your clothes.

The first coat does not completely coat the wood so don't worry. After the first coat dries in two hours I scrubbed it with a green Scotch-brite pad. (220 grit sand paper also works). Tack cloth the bowls and then mix another coat, and use a new set of brushes. The second coat covered all but the yellow bowls (which got 3 coats). After two hours of drying I scrubbed them again. Then after an overnight drying I

Continued on next page



Milk Paint

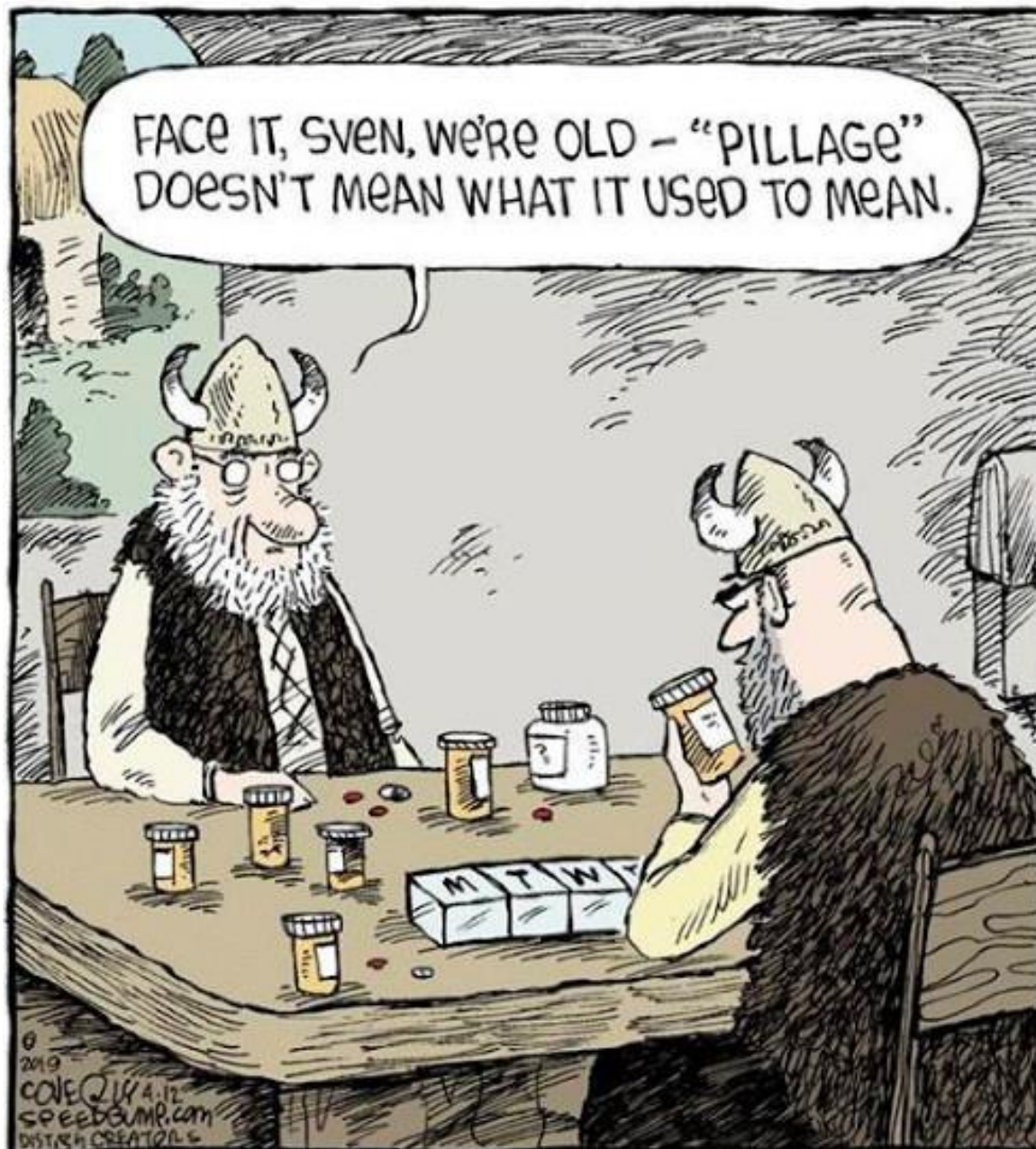
Mark Palma

removed all the tape, and vacuumed off the dry flakes of milk paint. Then they were tacked down and a coat of Watco Danish Oil was applied. A day later another coat was applied. Then I let them sit for a month to dry.

The End Result

The bowls I think speak for themselves. The design elements that I sought out to achieve I think came through in the end. Hopefully in 10 years they will still be in use and become a cherished part of someone's daily life.





**Did you know on
the Canary
Islands there is
not one canary?
And on the
Virgin Isles?
Same thing - not
one canary there
either!**



SE Metro Sub-Group ZOOM

On Thursday Jan 21 the SE Metro Sub-Group had its monthly Zoom meeting hosted by George Martin



Early birds, Lee Tourtelotte, Mike Rohrer, George Martin and Jay Schulz got in some extra woodturning conversation



Besides the early group, attendees included Mike Lucido, Rolf Krogstad, Bill Campbell, Doug Ashton (in a beach front hotel in Panama City, FL for 6 more weeks not being able to turn wood at his lathe or shovel snow), Dan Ernst, Dick Hicks, Steve Miller, Charlie Prokop, Mark Debe, Dick Zawacki, Glen Anderson, Steve Legvold, Jim Jacobs and Warren Gerber



SE Metro Sub-Group ZOOM (cont'd)



Bill Campbell showed two “red” species with totally different appearances, red elm (L) and red maple (R)

Discussion at the “meeting” centered around, finishing (always), Monthly Challenge pieces, staining, design, show and tell and other typical woodturners’ favorite topics



Jay Schulz showed 2 buckthorn bowls with different finishes and an asymmetric triple axis turning



Jim Jacobs likes Minwax Antique Oil Finish



Charlie Prokop has a favorite, Odie's Oil



SE Metro Sub-Group ZOOM (cont'd)



Charlie Prokop, Mike Rohrer and some others showed their entries into the February Member Challenge



Steve Miller made this salt/pepper set 20 years ago, but they would fit this month's challenge

Dick Zawacki showed the bald eagle he has been working on





Ben Pawlak

Complete sets of Fine Woodworking & Fine Home Building



FREE – Contact Ben Pawlak at 952-938-6452

Continued on next page





Mesquite

Jim Jacobs

I have a lead on a mesquite tree for anyone near the Phoenix area or who will be going through the Phoenix area. My cousin will have a tree service cut it down in mid-March. It's **FREE**.

woodmanmn@aol.com



Continued on next page



Cherry

Freshly cut cherry (Jan 4th) 7" to 11" in diameter. I have about 40 lineal feet of wood to share. Will cut to length that you want. Just let me know and come pick it up. I live in south Woodbury.

Charlie Prokop

charlieprokop@gmail.com



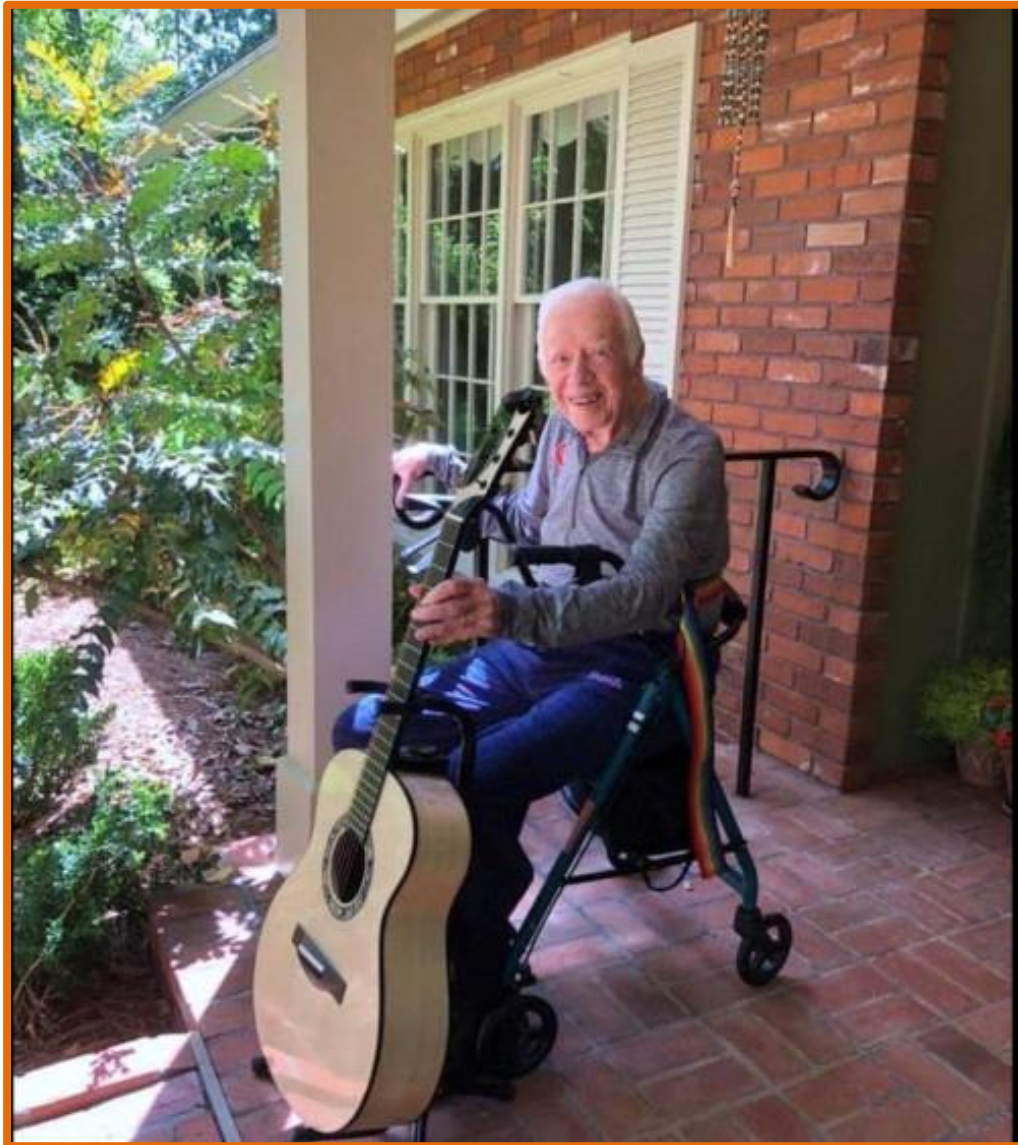
Continued on next page

Maple Burl & Others

This large hard maple log with several burls was brought to me by a customer. This one measures 4 feet long and 30 inches wide! I need help cutting it for coffee tables and bowls. The log also has several other bowl burls that look good.

John Enstrom 763-441-4086.





One of our former presidents, Jimmy Carter, is an outstanding woodworker, furniture maker. I have never heard whether he turns or not. This guitar he has just completed was made from wood from his property, from **A TREE WHICH HE PLANTED AS A BOY.**

WOOD SEALER

At this time sealer is available from:

Lee Luebke, Corcoran MN, lguebke@comcast.net

Julie Abbott, Eden Prairie MN, JulieAbbott@EdinaRealty.com

Bob Meyer, Lino Lakes MN, rjmbobco@comcast.net

Steve Mages, Minnetonka, smages@juno.com

Paul Laes, Cottage Grove, Woodforfun@hotmail.com

I am looking for others to sell sealer throughout the metro area.

Bring plastic jugs if you have them.

Sealer \$10.00 gallon.



We need heavy duty plastic jugs for dispensing sealer.

If you have any gallon containers, we could sure use them. It would be best if you could bring your empty containers to be filled.

The club now has a chip card reader so you can pay Lee Luebke by credit card or cash. Each gallon is still \$10.

Anyone wanting to sell sealer can buy a quantity from me if you like or take some gallons and sell them to members and send the money to Treasurer Mark Debe.

Lee Luebke, President MWA, 612-419-8743

Continued on next page



Andrew Hall – Live Woodturning Demonstration - from County Durham - England

Please find attached your **RSVP invitation**, for the next Record Power ‘Live Session’a **Free Educational Programme for Woodturning**.

We are delighted to support this series of Free ‘Interactive Remote Demonstrations’ (IRD’s) and we welcome you to join our International Woodturning Club.

Last week we welcomed over 1,650 viewers to our Live Session. Please encourage others who might benefit from being part of our community, and join us for these **Inspirational, Educational & Entertaining** Woodturning events.

Simply send an email with **RSVP** in the subject line to miked@recordpower.co.uk – and we will reserve a spot for you. Your log in details will be sent in return.

Live Sessions 1 & 2

Small Hats from the Magnificent Seven – With Andrew Hall - England

Live Session 1

AUSTRALIA

Thursday 28th January

3.30am (AWST) WA

5.00am (ACST) NT

5.30am (AEST) QLD

6.00am (ACDT) SA

6.30am (AEDT)

NSW, VIC, TAS, ACT

NEW ZEALAND

Thursday 28th January

8.30am (NZDT)

USA & CANADA

Wednesday 27th January

2.30pm (EST)

1.30pm (CST)

12.30pm (MST)

11.30am (PST)

Live Session 2

AUSTRALIA

Thursday 11th February

5.30pm (AWST) WA

7.00pm (ACST) NT

7.30pm (AEST) QLD

8.00pm (ACDT) SA

8.30pm (AEDT)

NSW, VIC, TAS, ACT

NEW ZEALAND

Thursday 11th February

10.30pm (NZDT)

USA & CANADA

Thursday 11th February

4.30am (EST)

3.30am (CST)

2.30am (MST)

1.30am (PST)





New rotary vacuum adapter for Revo 18/36 and 24/36 lathes.

Here is the manufacturer's link:

https://lagunatools.com/?s=Rotary+adapter+&post_type=product&type_aws=true

Screws into the headstock

John Campbell

612-707-5986

campbell.jn@gmail.com





Please send items for the Bulletin Board to: mdrprof@gmail.com

As a group which cannot meet in person, we'd like to keep up with our friends and hear about awards, shows, family news (weddings, accomplishments of children and grandchildren), retirements, hospital stays, illnesses, book recommendations, website recommendations and anything else you would normally talk about in person at MWA or Sub-Group meetings. All of these and more are possibilities for the Bulletin Board. We're not seeing our MWA friends face-to-face, but we still need to stay in touch.



Lathe Contact List

The MWA Newsletter is presenting a list of members who would be happy to give you pros & cons and experiences with the lathes they own or with which they have had experience. This list is being updated every week as more members are contacting me saying they'd be happy to be listed. If you would be willing to have your name and email address listed under the type of lathe(s) you have, please contact me .

LATHE	Member	Email address
Bonnie Klein Mini 12x18	Linda Ferber	lindajaneferber@gmail.com
Craftsman Professional	Steve Mages	smages@juno.com
Delta mid size 12"	Randall Thompson	thomp013@umn.edu
Delta mid size 12"	Dan Larson	dhjlar@comcast.net
Delta midi	Bob Meyer	rjmbobco@comcast.net
Delta midi	Joe Zwirn	joezathome@msn.com
Grizzley G 0733	Martin Young	martin.clay.young@gmail.com
Harbor Freight(Central Machinery 10x18)	Rusty Ogren	rick.Ogren@consolidated.com
Jet 1015	James Zangl	james.zangl@gmail.com
Jet 12/21	Lee Luebke	lguebke@comcast.net
Jet 14x42	Rusty Ogren	Rick.Ogren@consolidated.com
Jet 1640	Joe Zwirn	joezathome@msn.com
Jet 1642 EVS	Jenny Trice	jennytrice@aol.com
Jet 1642 1.5 hp	Greg Just	woodturner07@gmail.com
Jet JML 10/14 Mini	Neil Robinette	northsideturners41@gmail.com
Jet JWL - 1220VS	John Campbell	campbell.jn@gmail.com

Continued on next page



Lathe Contact List (cont'd)

Laguna 12/16	Lee Luebke	lguebke@comcast.net
Laguna 18/36	Jay Schulz	ifschulz@comcast.net
Laguna 18/36	Dan Larson	dhjlar@comcast.net
Laguna 18/36	Lee Luebke	lguebke@comcast.net
Laguna 18/36	Mike Lucido	mike.s.lucido@gmail.com
Laguna Revo 18/36 220v	John Campbell	campbell.jn@gmail.com
Laguna Revo 18/36 220v	Neil Robinette	northsideturners41@gmail.com
NOVA 3000	James Zangl	james.zangl@gmail.com
Nova Comet II	Rolf Krogstad	rolf.krogstad@gmail.com
Nova Comet II	Mike Anderson	manderson4700@comcast.net
NOVA DVR 16"	Dan Larson	dhjlar@comcast.net
NOVA DVR 16"	Joe Zwirn	joezathome@msn.com
NOVA DVR XP	Bill Szydlo	szydlo.bill@gmail.com
NOVA DVR XP 16"	Chuck Shreffler	cshreffler@outlook.com
Oneway 2036	Dick Zawacki	dickzawacki@gmail.com
Powermatic 2014	Steve Legvold	stevelegvold@gmail.com
Powermatic 2520B	Steve Mages	smages@juno.com
Powermatic 3520B	Todd Williams	toddwilli@comcast.net
Powermatic 3520B	Steve McLoon	s.c.mcloon@gmail.com
Powermatic 3520C	Reid zimmerman	reidazimmerman@gmail.com
Powermatic 3520C	Dan Ernst	piloto1@comcast.net
Powermatic 4224B	Dan Larson	dhjlar@comcast.net
Powermatic 45	Todd Williams	toddwilli@comcast.net
Robust Liberty	Jim Jacobs	woodmanmn@aol.com
Robust Liberty	Warren Gerber	xlwalleye@gmail.com
Robust Sweet 16	Linda Ferber	lindajaneferber@gmail.com
Robust Sweet 16	Bob Meyer	rjmbobco@comcast.net
Robust Sweet 16	Tim Dodds	tbikefast@aol.com
Shopsmith	Martin Young	martin.clay.young@gmail.com
Vega 2600	Bill Szydlo	szydlo.bill@gmail.com
Vicmarc VL 300	Lee Tourtelotte	leetourtelotte@icloud.com



Member Help Line

The club has organized a "Member Help Line", the purpose of which is to answer questions/give advice and help educate our membership. Even though it is more difficult during the Covid-19 social distancing time to help people in home workshops, there are still ways to help each other with woodturning questions/problems. The volunteers can help via email, telephone, Zoom, some personal contact using social distancing and masks, and probably other ways we haven't tried yet.

Maybe you're a beginner looking for advice on what to buy.

Maybe you have questions on chucking.

Maybe you have sharpening questions.

The volunteers listed on the next page are more than happy to help. Some have listed areas in which they feel more comfortable, but all will help with your woodturning question.

We would like more members to volunteer for our Member Help Line. If you would like to be "on call" please contact Mike Rohrer at mdrprof@gmail.com with your phone #, email address, area where you live, areas you'd be willing to help with, and your name will be added to the list.

Continued on next page



Member Help Line

Mike Rohrer	612-276-9556	mdrprof@gmail.com	bowls, boxes	South Mpls
Steve Miller	715 821-8726	ssmiller920@gmail.com	all types, light on segmenting	River Falls, WI
Lee Tourtelotte	612-670-1874	leetourtelotte@icloud.com	all types, beginner, advanced	South Mpls
Warren Gerber	651 403 2883	xlwalleye@gmail.com	Bowls	Mendota Heights
Jim Jacobs	651-497-1309	woodmanmn@aol.com	beginner/advanced, segmenting, skews	Hastings
Dick Zawacki	507-744-5748	dickzawacki@gmail.com	general, bowls, wood carving	Northfield
Mike Lucido	651-738-2551	mike.s.lucido@gmail.com	general woodturning	Woodbury
Bill Campbell	715-338-2634	wm.e.campbell@uwrf.edu	general woodturning	River Falls, WI
Mark Kelliher	651-636-8678	markandkathy007@comcast.net	general woodturning	Arden Hills
Todd Williams	651-274-4658	toddwilli@comcast.net	general woodturning	Lake Elmo
Bob Meyer	651-483-6187	rjmbobco@comcast.net	bowls, ornaments, sharpening, gen'l.	Lino Lakes
Dick Hicks		rbhicks@rbhicks.com	platters, spindle work, bowls	Zoom from shop
Steve Mages	952-544-5286	smages@juno.com	general woodturning	Minnetonka
Neil Robinette	763-639-1085	northsideturners1@gmail.com	sharpening, tool control, turning vs budget	Brooklyn Park
Andy Levesque	651-769-4070 TEXT	andy.m.levesque@gmail.com	resin/epoxy casting, hybrid turning, vacuum stabilizing, CNC & laser engraving	Lindstrom
Rusty Ogren	612-990-4857	rustywoodsart@gmail.com	resin questions, crack filling	Plymouth
Dan Ernst	651-280-7484	pilot01@comcast.com	coring, wing bowls, bowls, gen'l turning	Maplewood, St Paul
Bill Szydlo	651-206-5547	szydlo.bill@gmail.com	segmenting, sharpening, gen'l turning	Northfield, MN
James Zangl	6541-645-4696	james.zangl@gmail.com	bowls, hollow forms, vases, pens, etc	St Paul -Hamline area
Joe Zwirn	612-619-4793	joezathome@msn.com	segmenting, general woodturning	Brooklyn Center
Mark Palma	612-991-7733	marksworkshop@gmail.com	finishing & color	Lanesboro



MWA Demonstrations Since July 2017

<u>Newsletter</u>	<u>Demo</u>	<u>Demonstrator</u>
July 2017	Hollowing for Embellishment	Gary Mrozek
Aug 2017	Turning & Decorating a Platter	Jeff Luedloff
Sep 2017	Bowl Coring	Neil Robinette
Oct 2017	Traditional Platter, Viking Bowl	Glenn Lucas
Oct 2017	Natural Edge Bowl	Bob Meyer
Nov 2017	From Tree to Bowl	Dan Larson
Dec 2017	Turning Ornaments	Jim Jacobs
Jan 2018	Making a Pendant	Alan & Lauren Zenreich
Feb 2018	Spindle Turning/Milk Paint	Linda Ferber
Mar 2018	Chain Saw Safety & Techniques	Steve Hagen
Apr 2018	Lidded Boxes	Steve McLoon
May 2018	Hollow Forms & Platters	Trent Bosch
	Platters & Bowls	Mike Mahoney
June 2018	Travel Mug	Greg Just
July 2018	Log Preparation & Sawmill	John Enstrom
Aug 2018	Squarish Platter	Mike Hunter
Sep 2018	Pens	Ed Mielech & Rick
Auge		
Oct 2018	Safe & Comfortable Turning	Eric Lofstrom
Nov 2018	Finishing	Mark Palma
Dec 2018	Finials	Steve McLoon
	Lefse Sticks	Jim Jacobs
	A Shop	Todd Williams
	Handles	Tim Heil
Jan 2019	Scandinavian Inspired Bowls	Dan Larson
Feb 2019	Segmented Turning	Curt Theobold
Mar 2019	Peppermills	Tom Sciple
Apr 2019	3-Legged Stool	Keith Gotschall
May 2019	Baby Rattle with Captive Rings	Gary Mrozek
June 2019	Spheres & Embellishments	Steve McLoon
July 2019	Wood-Mizer Portable Sawmill	John Enstrom
Aug 2019	Finial Box	Cindy Drozda
Sep 2019	Spalting	Seri Robinson
Oct 2019	Rings True to Life	Phil Holtan
Nov 2019	Be More Creative	Beth Ireland

<u>Newsletter</u>	<u>Demo</u>	<u>Demonstrator</u>
Dec 2019	Holiday Ornament	Bob Meyer & Mike Hunter
Jan 2020	3-Pointed Vase/Box	Tom Sciple
Feb 2020	Long-stem Natural Edge Vessel	Rudy Lopez
Mar 2020	Hollow Form	Lyle Jamieson
May 2020	Shop/Multiple Topics	Mike Mahoney
Mini # 11	Bowl Turning. Part 1	Dan Larson
Mini # 12	Bowl Turning. Part 2	Dan Larson
Mini # 13	Christmas Bell Ornament	Robin Costelle
Mini # 13	Irish (Glenn Lucas) Platter	Dick Hicks
Mini #15	Log Processing Center	Lee Tourtelotte/Dan Larson
Mini #16	Coring	Dan Larson/Dan Ernst
Mini #17	Wing Bowl	Dan Ernst
Mini #18	Finials	Dick Hicks
Mini #19	Natural Edge Bowl	Bob Meyer
Mini #20	End Grain Platter	Dan Larson
Mini #21	Michael Mode Style Bowl	Lee Tourtelotte
Mini #22	Super Simple Segmenting	Jim, Jacobs
Mini #23	Turning & Painting a Mushroom	Linda Ferber/Rosanne Gold
Mini #25	Stamping & embossing	Joan Sauvageau
Mini #27	Pepper Mills	Steve Miller
Mini #28	Marking Turnings	Linda Ferber
Mini #29	Texturing, embossing	Mike Peace
Mini #31	Xmas Ornament	Hunter/Meyer
Mini #32	Calabash Bowl	Emiliano Achaval
Mini #34	Bowl Basics, Twice Turned	Sam Angelo
Mini #35	Shop design, arrangement	Mark Palma
Mini #36	Skew Fundamentals	Jim Jacobs
Mini #38	Lidded, beaded bowl	Glenn Lucas
Mini #39	Christmas ornaments, gifts	Dan Larson, Dick Hicks
Mini #40	Richard Raffan style box	Mike Hunter
Mini #43	Walnut; Quarter-sawn platter	Mike Mahoney
Mini #44	Embellishments	Linda Ferber
Mini #45	Heart-shaped NE bowl	Dan Ernst



Editor's Notes

Thanks to Fred Schmoll for sending humor to me for the newsletter.

Please get your photos of your February Monthly Challenge to me by Jan. 30.

Finish your Beads of Courage boxes for the Bob Jensen memorial and get the pictures to me.

I'm looking forward to our February meeting and our demonstrator, Eric Lofstrom. Make sure you "attend" the meeting. It will be worth it. Eric's topic will be "Finishing". We all, always have questions about finishing.

Mike Rohrer

Editor

mdrprof@gmail.com



