



Minnesota WoodTurners Association

A LOCAL CHAPTER OF THE AMERICAN ASSOCIATION OF WOODTURNERS



Mini Newsletter No.43

Minnesota Woodturners Association

BOARD MEMBERS

Officers

PRESIDENT Lee Luebke

VICE PRESIDENT AND LIBRARY

Janese Evans

TREASURER Mark Debe

RECORDING SECRETARY

Rosanne Gold

Directors

Reid Zimmerman - 501c3

Coordinator

Marc Paulson

MEMBERSHIP DIRECTOR

Ken Crea

TECHNICAL SUPPORT

Dick Hicks – Audio Visual &
IRD Technical Advisor

Marc Paulson

**AAW REPRESENTATIVE &
DEMONSTRATIONS**

Linda Ferber

OTHER STAFF SUPPORT

Bob Meyer - Group Purchasing

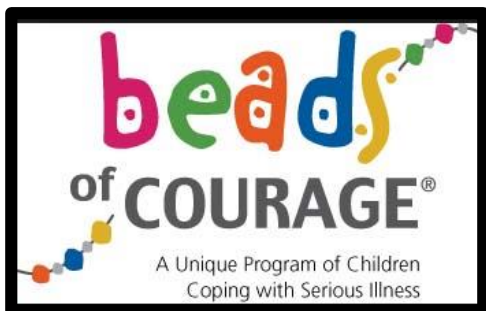
Dan Larson – Classroom & IRD
Coordinator

Mike Hunter – Professional
Demonstrations

Paul Laes – Sales at Meetings

Mike Rohrer - Newsletter





Beads of Courage Project to Honor Bob Jensen

Bob & Diane Puetz are asking those who have volunteered to make these special boxes to do 3 things:

1. **Finish** the boxes as soon as you reasonably can
 2. Get the **boxes to Bob & Diane** in a reasonably short time after you finish them (see list of drop off sites)
 3. **Take pictures of your finished boxes** and send them to Editor Mike Rohrer so we may put the pictures in the newsletter and have a photographic history of this special project.
- If you have any questions, please contact Bob or Diane at: bobpuetz@yahoo.com

- | | | |
|----------------------------|--|-------------|
| 1)North metro: Diane Puetz | diane.puetz@yahoo.com | East Bethel |
| 2)North East :Bob Meyer | rjmbob@comcast.net | Lino Lakes |
| 3)West metro : Steve Mages | smages@juno.com | Plymouth |
| 4)East metro : Mike Lucido | mike.s.lucido@gmail.com | Woodbury |
| 5)South metro: Jim Jacobs | woodmanmn@aol.com | Hastings |

It would be good if you would confirm via email when you will be bringing the finished Beads of Courage boxes



Instant Gallery

Brad Gudim



A small turning by new turner, "Magic Brad"



Instant Gallery (cont'd)

Eric Koslowski



Can they be called acorns if I didn't use any oak to make them?!!



Instant Gallery (cont'd)



A couple of ornaments I made as gifts. This black walnut piece is my first try at an inside-out ornament. It was not easy getting the pieces to fit nicely with just a bandsaw and some sandpaper.



Julie Abbott



This one is apple, nothing special, just a quick ornament. Although, I guess it's special since it was made from limbs trimmed from the apple trees at the orchard where we were married. I'm told that's "romantic". Really, I just ran out of gift ideas and spent an afternoon in the shop.



Ask A Turner

Joe Zwirn

Joe Zwirn would like to talk to someone who has done resin bowl casting with or without a pressure pot.

Please give Joe a call at: 612-619-4793



Monthly Challenge



New 2021 Monthly Meeting Challenge.

We are going to start up the monthly challenge.

The challenge will start in February and sponsored by Woodcraft. We will have some \$10.00 Woodcraft gift cards to give out through a random drawing giving all an equal chance to win. Number of cards to be determined.

To be included in the gift card drawing, pictures and description should be submitted via email to Mike Rohrer mdrprof@gmail.com *once finished but no later than one week before the Monthly Meeting date.* All have an equal chance at winning a gift card.

You received a notice for the new Monthly Challenge. The Challenge for February is a turning that starts from plywood or a 2x4. Please send me pictures of your Challenge turning as soon as it is finished. The deadline is the Saturday before the next meeting, so the deadline for the February Challenge is Jan 30.

There is no judging; prizes will be given by a drawing. As soon as Mike Rohrer receives pictures of your challenge, your name is put in the pot to be drawn (electronically, by some random choosing program).

It is not necessary but if you include a picture of the raw material it will add some interest as the Challenge Pieces are posted.



Monthly Challenge February

Charlie Prokop



Tri corner bowl with walnut, paduk and cherry; ogee shape ring bowl with walnut; 11" wide 5 " tall.

The tri corner bowl was a 1st time turning. The ogee bowl rings required adjustments to the angles of the cuts to get the shape from 40 deg to 24 degrees.

And a nice little pen



Monthly Challenge February

Charlie Prokop



Monthly Challenge February

Ken Hallberg



Trifecta Bowl #2 - from a 5"
cube of colored Baltic birch
plywood with accent pieces
of walnut, bubinga, and birch



Monthly Challenge February

Marc Paulson



Monthly Challenge February

Rusty Ogren

Plywood and resin- a memorial teardrop for an active-duty soldier who died. The broken plywood reflects the shattered lives of those that remain. The letter is for the person who died.



Photography in Woodturning

Doug Johanssen

This is the second in a series of articles regarding photography in woodturning. The first was in Mini Newsletter.38

This article is written to help our wood turners stage and take good photographs of their turnings using their smart phone cameras. These basic instructions also apply if you're using a DSLR camera. For the most part, you should not have to purchase anything more than most people already have in their homes.

The turnings I've seen in our newsletters show incredible workmanship and I hope my photo tips will help our turners present their work in the best possible way. I've thought of making a "Grampa's Woodworking" book of photos of my work for my grandkids – perhaps others have too. But first, let's think about some principles about lighting that we already know but maybe have not actually put into words.

Let's begin with thinking about two sources of light – a spotlight or a diffused source. Outdoors, the spotlight is the sun, and the diffused source is an overcast sky. Indoors, consider the camera flash or a light bulb to be the spotlight whereas the diffused source is natural light coming in a north facing window. Outdoors or indoors, the spotlight source creates harsh shadows whereas the diffused source softens and minimizes shadows. In general, when photographing our wood turnings, we want soft shadows, not harsh ones. Slight shadows are beneficial as they help provide a more pleasing three-dimensional appearance of the subject.

How do we achieve this in setting up our photo shoot? Personally, I like the naturally soft shadows provided outdoors on a cloudy day – but not all cloudy days are equal as the thickness of the overcast varies. Professionals will often use reflective white boards to help control the amount of shadow on either side of the object – but that's getting a bit more advanced and complicated than the scope of this article.



Photography in Woodturning

Doug Johanssen

I just mention it so you know there's a lot more that can be done to improve photos – just as getting new chisels or experimenting with new finishes can enhance our wood working.

If shooting indoors, we can place our object so it is illuminated by a north window (or west window in the morning or east window in the afternoon). White ceilings and white walls also act as reflectors to help diffuse the light (brightly colored walls or nearby brightly colored large objects can skew the colors in your photograph). All this is done without using the flash on your smartphone. Unless you have a really good understanding of lighting and the equipment to go along with it, using a flash is generally not going to give you good results.

The photos I've included with this article show a dark cup (made from mesquite) against a white background. Darker woods generally stand out better against a light background whereas light colored woods seem to show better against a dark (or black) background. That's usually true, but not always – digital photography allows you to experiment without added expense.

In one photo I used a white towel for the background, in the other a large roll of white seamless background paper purchased from a local camera store. Rolls of seamless paper are available in various widths and of course the wider the paper the more it costs.



Photography in Woodturning

Doug Johanssen

Please note that in both photos there are no seams. Using two pieces of whiteboard will show a seam where the two boards join. I find that detracts somewhat from a photo, thus I prefer a seamless background. If you don't have seamless paper, then placing the object on a suitable plain or covered pedestal will help to raise it above the seam and out of the photo.



The wrinkles and texture of the towel seem to take a little bit of the attention away from the cup (using a white sheet works too but the wrinkles are extremely difficult to deal with). Remember, your photograph should highlight your work so don't let the background take away from it. However, if you know how to arrange a good background that enhances your work, do it!



Photography in Woodturning

Doug Johanssen

What comes to mind is an 8-point buck sticking its head out of a patch of brush vs the whole buck visible in a completely snow-covered field. The brush adds a bit more context and suspense as we know how quickly the buck could just disappear.



In my opinion, my Android phone made the white paper background too gray. So, for the third photo I did a little Photoshop editing to make the background much lighter. I know many of you don't have photo editing software but for me it's an indispensable tool. A DSLR allows you to dial in some exposure compensation, thus avoiding some Photoshop work.* My Android doesn't have an exposure compensation feature, perhaps yours does. If so, you won't need Photoshop.

*Ed. Note: I had used Photoshop for years doing my photo editing for all of my teaching and research programs. At the same time as I retired from UMN, Photoshop changed their practice so that instead of purchasing a program, we were going to have to pay a very high annual fee. I searched for a free editing program and settled on GIMP – 2.10. As in Photoshop, I'm sure I only use about 4% of its capabilities, but it works well and is free.

<https://www.gimp.org/downloads/>



Photography in Woodturning

The fourth photo simply shows my setup of the roll of seamless white paper draped over a countertop with the mesquite cup resting on the paper.



Doug Johanssen

We “see” the effects of bright light, diffused light and all sorts of shadows every day, indoors, outdoors, in books, paintings, magazines, newspapers and TV. I hope this article will help you to think about “how” photographers and artists use the tools of their trade to control light to achieve these results.

One final thought. There are plenty of excellent tips on product photography on the internet. Just google “how to take photos of products” and there’s enough to waste a day or two. Much of it is intended for photographers using DSLR’s but even if you don’t have one you can learn and grow to appreciate the level of expertise professional product photographers have. Most of them would likely be as intimidated by using a lathe as you might be in using a camera. But we both can learn.

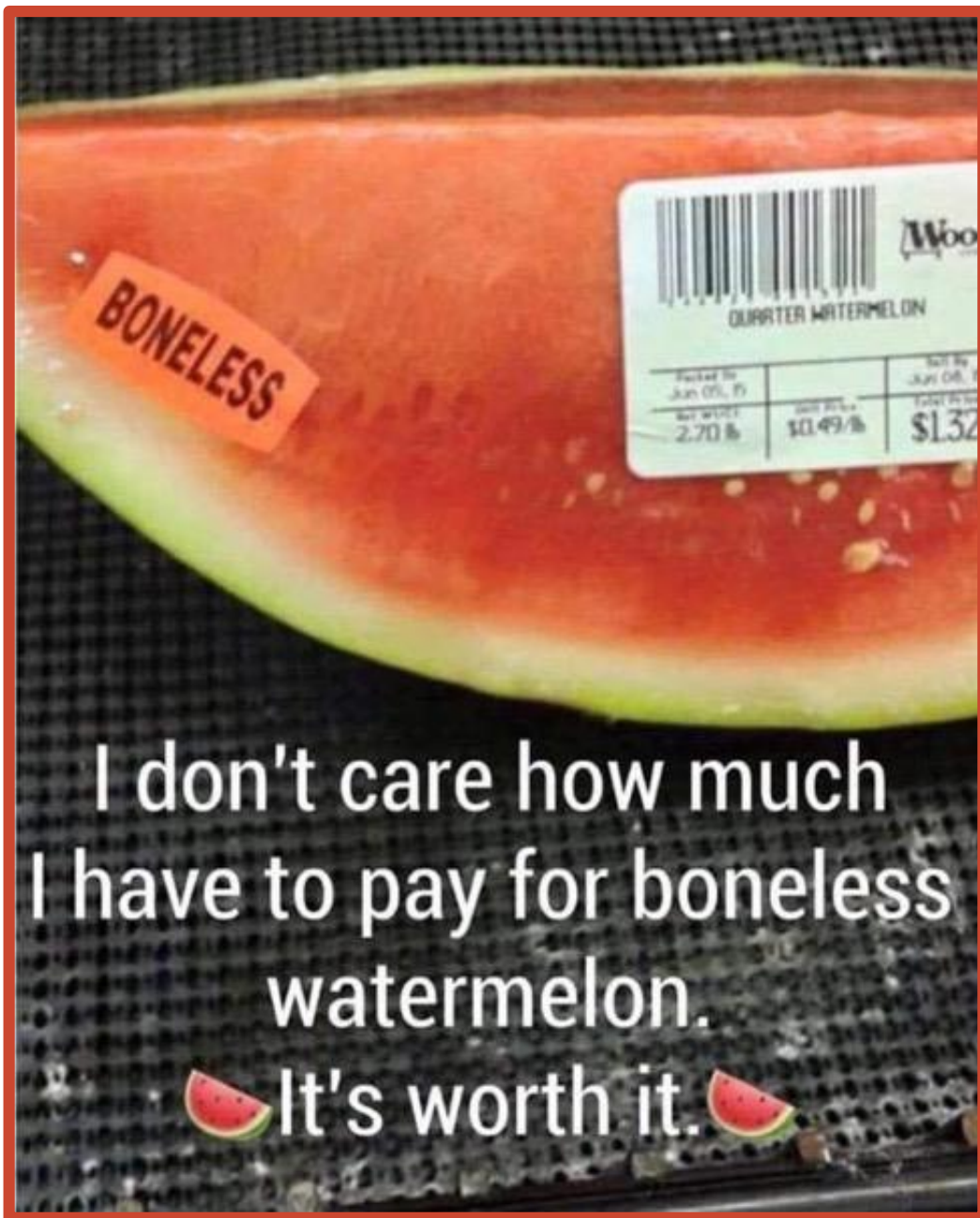


Photography in Woodturning (cont'd)

Doug Johanssen

Pictures taken by Doug in early January of a barred owl. Doug says the title for the second picture is "A prayer in thanks for the rodent I am about to eat."





MWA January “Meeting” Mike Mahoney Demo from California



Mike Mahoney, a pro turner admired by many of the MWA members, provided the Zoom January MWA meeting. The first part of the meeting was about **WALNUT**.

A Walnut Story

My relationship with walnut wood

Juglans is Latin for “Ju”, a shortened form of Jupiter (as in god) and “glans” meaning “acorn”
Jupiter’s Acorn

There are dozens of species of juglans/walnut around the world. Commercially there are 4 valuable species, *Juglans regia* (English walnut), *Juglans nigra* (black walnut), *Juglans hindsii* (claro or California walnut) and *Juglans regia* X *hindsii* (paradox walnut, *aka* Bastogne).



MWA January "Meeting" Mike Mahoney (cont'd)

Juglans regia or English walnut originally grew in the Old World from South Eastern Europe to Japan with the most diverse density in Persia.

Juglans nigra or black walnut grows from South Eastern Canada south to the Southern states to the Eastern Slopes of the Sierra Nevadas.

Juglans hindsii or Claro walnut grows in the fertile northern valley of California

Juglans hindsii x *regia* (Claro x English), commonly called Paradox walnut, is a cross pollinated hybrid developed by Luther Burbank.



Wet/dry walnut orchards. The dry on the left have trees that are a long distance apart to share the scant water



The walnut trees in a wet orchard are irrigated and mature much more quickly than those in a dry orchard

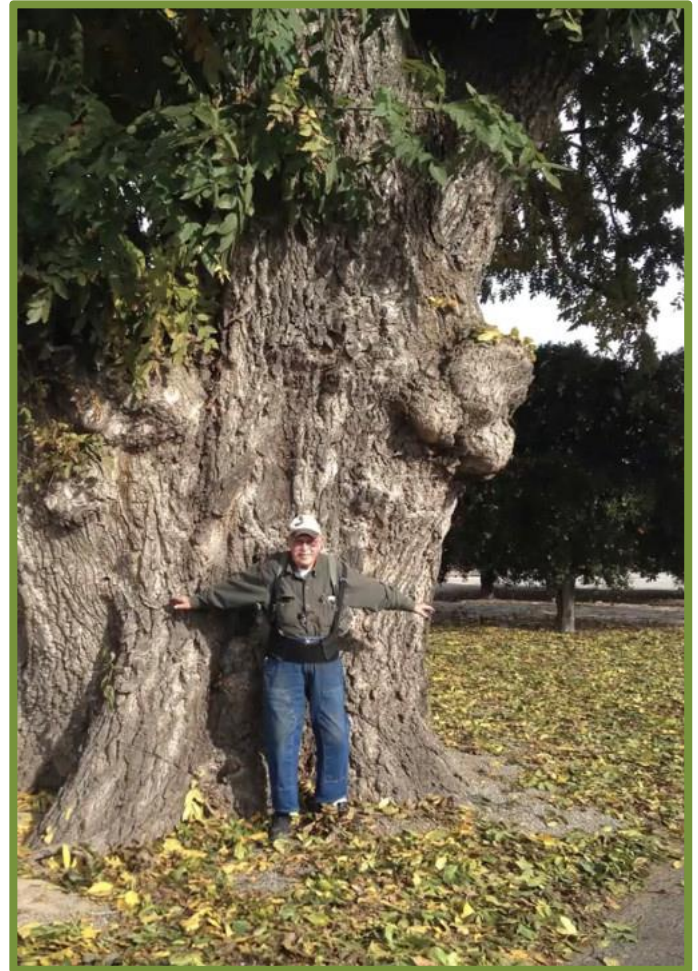




English walnut grafted on Paradox walnut



English walnut grafted on Claro Walnut



A 100-year-old paradox walnut tree with lots of burls

MWA January "Meeting" Mike Mahoney (cont'd)



Interesting Historical Fact

In 1869, the US completed a transcontinental railroad system. Early entrepreneurs learned they could cut the native California walnut and ship lumber to furniture makers back East as they found the claro to have better color and workability than the black walnut. Just like the gold, the native walnut ran out and was soon regarded as endangered, as it still is to this day in Northern California.



Left to right, English, claro, paradox

The Lingo of Figured Wood

How to see Quilt, Fiddleback, Flame, Tiger, Compression, Birdseye, Burl, Blistered, Flame, Marble Cake, Mottled, Ribbon, Swirl, Circassian

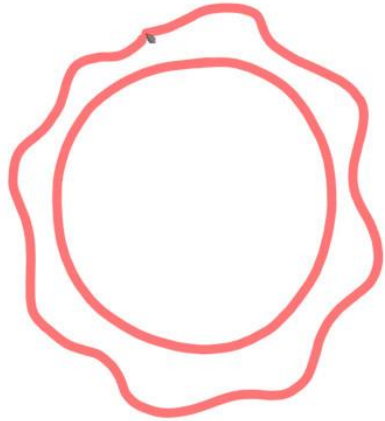
Fiddleback



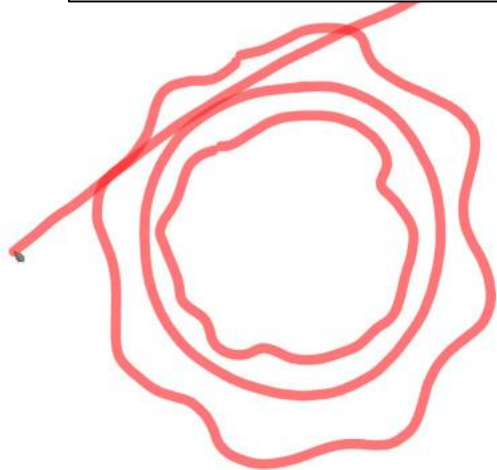
Also known as Tiger and Flame



Seeing figure in the bark



Annual rings are
irregular, not round

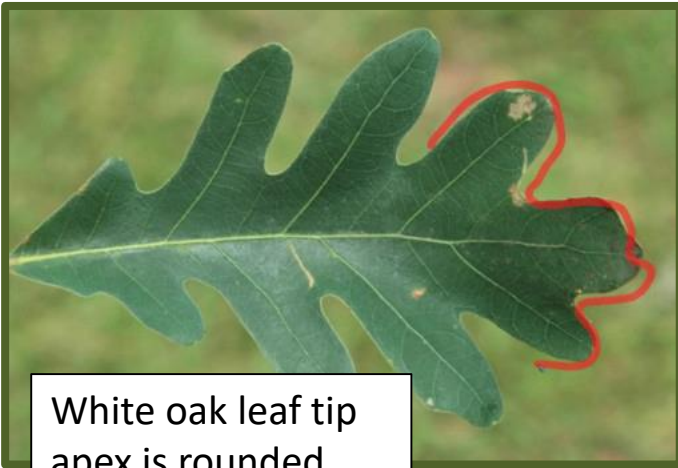


Sliced annual rings
define the figure



Where the bark is jumbled in the crotch, the
figure will be very irregular and interesting

Mike let the group vote on the next topic - **OAK Platter** was chosen



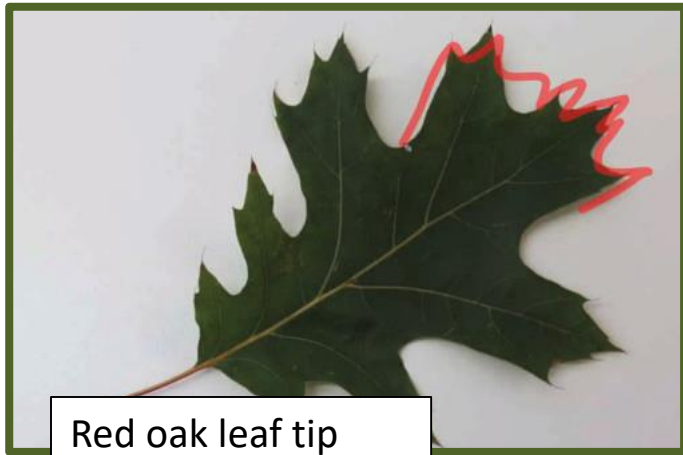
White oak leaf tip
apex is rounded

Red oak vessels will
leak and red oak
rots in the ground

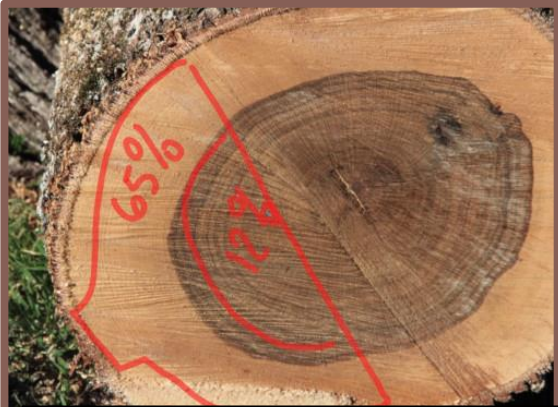
White oak for
vessels, tools &
buildings



Quarter-sawn white oak; cut
parallel to the medullary
rays in a pinwheel pattern



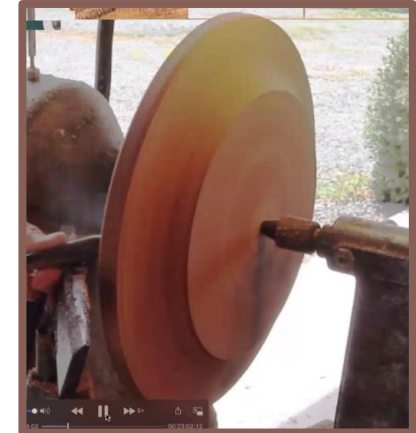
Red oak leaf tip
apex is sharp



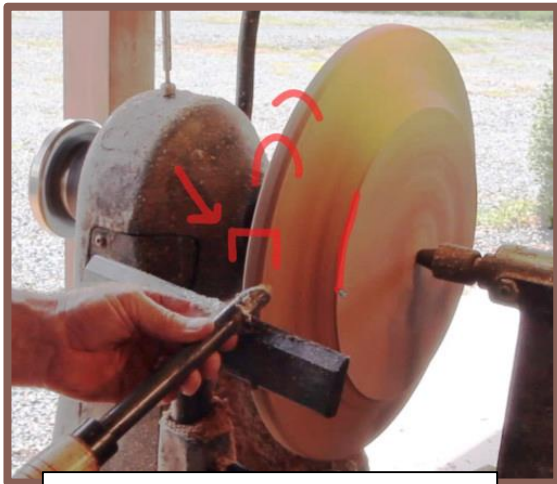
Shrinkage will depend on the moisture percentage in the heartwood and sapwood



Medullary rays from quarter-sawn oak



Mike turns these platters in 2 stages



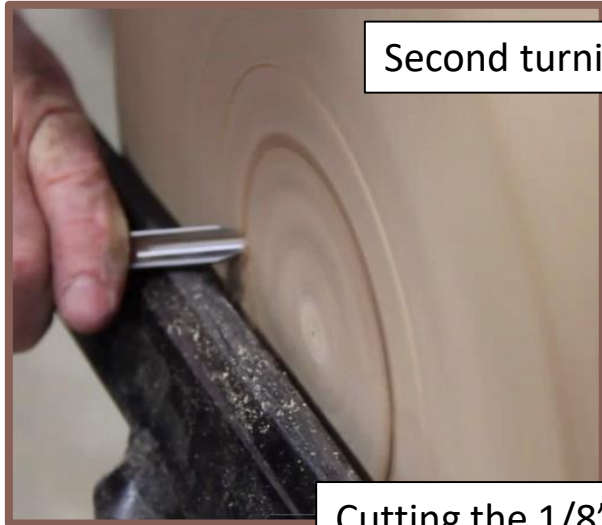
Round the sharp edges in the first turning



Round the ends in cylinders you will dry



Measuring closed chuck jaws for recess



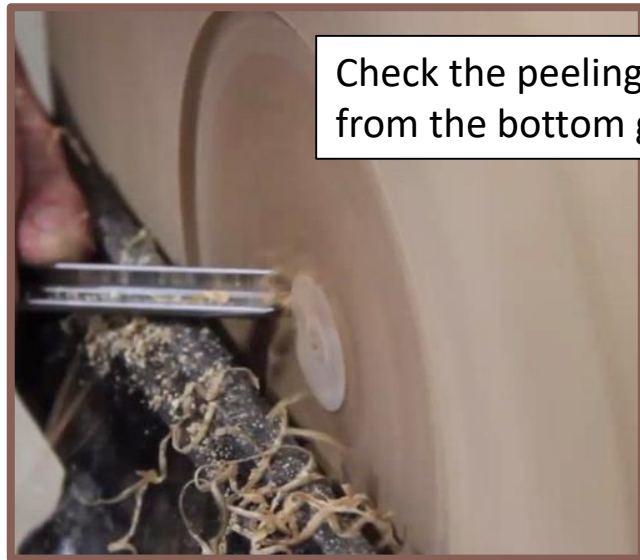
Second turning



Cutting the 1/8" deep recess



Using the bottom gouge to smooth the recess



Check the peeling chips from the bottom gouge



Base should be 50% of platter's diameter



Ogee, bead, base on platter bottom



Sand entire base at this time



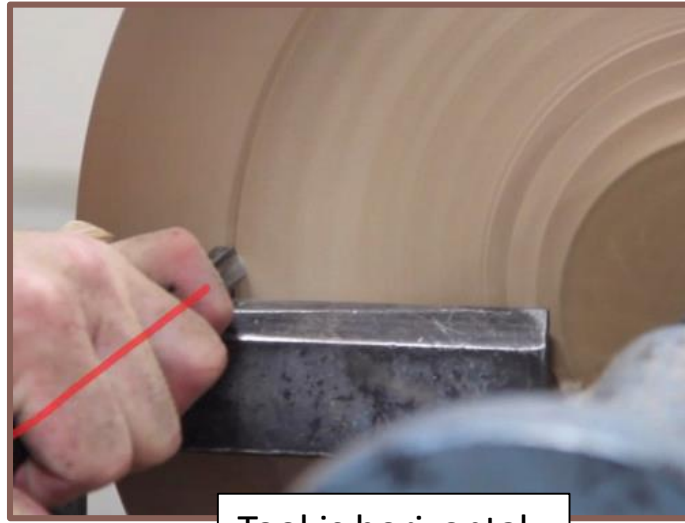
Burnish the sanded area with a worn-out piece of 400 sandpaper



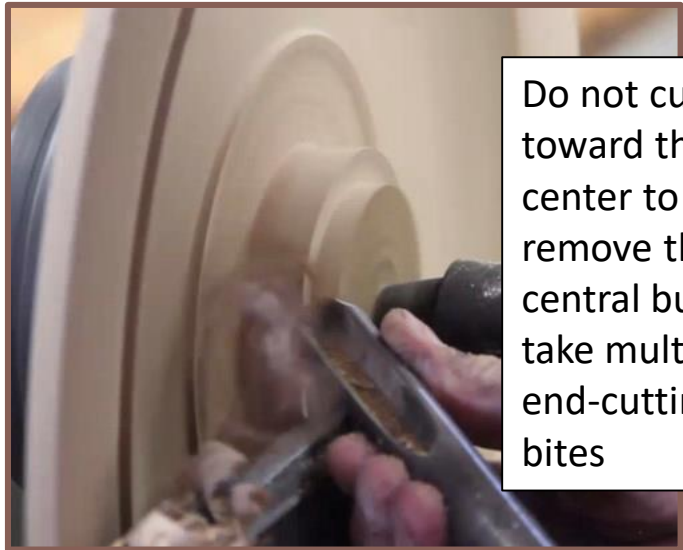
Reverse & mount the platter with the chuck in the recess. Bring up the tailstock to begin turning the rim.



Bulk removal of the platter top with the "big" tool



Tool is horizontal



Do not cut toward the center to remove the central bulk; take multiple end-cutting bites



Mike likes a sharp point on his gouge angled 40 degrees



Scraper angled slightly down; Mike doesn't use negative rake scrapers

MWA January "Meeting" Mike Mahoney (cont'd)

Lee Tourtelotte made me aware of a very nice, informative, 14-minute human interest video in which Ashley Harwood interviews Mike Mahoney. Some tours of his beautiful property and discussions of his winemaking are included.

<https://youtu.be/z17bHgababk>



MWA January "Meeting" Mike Mahoney (cont'd)

Thanks, Mike, for a very informative and interesting demonstration!

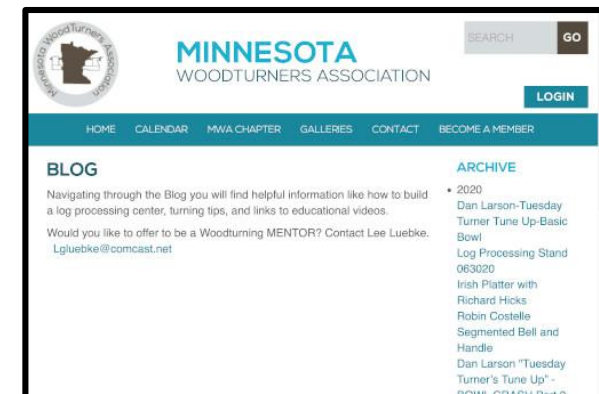
To view Mike's demo:

Step 1: Log into the MWA website home page

Pres. Lee Luebke is archiving the Tuesday Turners Tune-Ups and other demonstrations on the MWA website

Step 2: Under MWA Chapter, click on BLOG

Step 3 : Under ARCHIVE, click on which video you'd like to see





Jay Schulz

1000 Canker Diseases in Walnut

The UofM Extension website has some nice reference articles on 1000 canker diseases in walnuts. You will find them at the top of the list when you search the term “canker in walnut” on the UofM Extension website (a link to the search results is attached below).

[Search | UMN Extension](#)



Walnut

Freshly cut cherry (Jan 4th) 7" to 11" in diameter. I have about 40 lineal feet of wood to share. Will cut to length that you want. Just let me know and come pick it up. I live in south Woodbury.

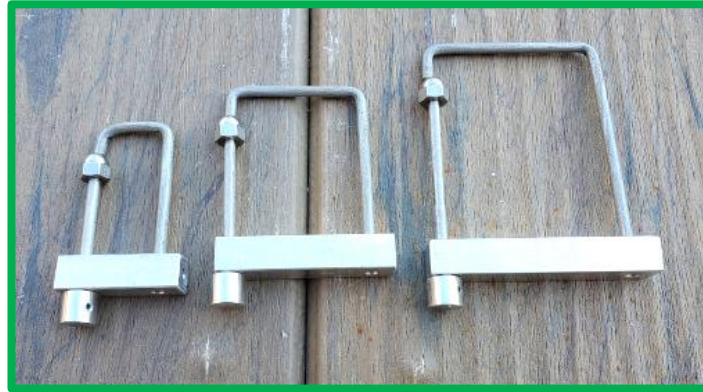
Charlie Prokop

charlieprokop@gmail.com



Continued on next page

Tolly Gauges



Joe Zwirn ordered enough Tolly gauges so Johnny would not charge for shipping. He has one set left and will sell it for \$25, the price everyone who ordered a set paid. If you would like this set, contact Joe at: joezathome@msn.com

In the December 15th Tuesday Turner's Tune-Up Mike Hunter used an interesting and handy thickness gauge, called a Tolly Gauge. Johnny Tolly is a woodturner in Texas. He brought a number of these sets of gauges to our club to sell a couple of years ago and all the income from the sales was donated to Beads of Courage.

Continued on next page



Log Processing Center - LPC

Jenny Trice

MWA member, Jenny Trice, has produced a new and improved dimensioned drawing of the MWA's LPC. Jenny's background is engineering. She retired in May after 31 years in a technical role at 3M.

Jenny says:

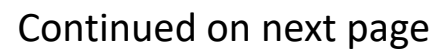
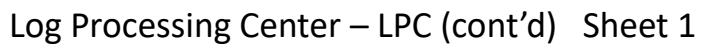
I use an open source (free) software called Onshape. It is very much like commercial CAD packages. It is cloud based, meaning that there is no software download and you don't have to worry about keeping versions updated. It is free as long as your files are open for others to see. I taught myself Onshape, since my retirement, by using the extensive tutorials that have video descriptions and exercises to practice and demonstrate learning. My main reason for learning Onshape was for my woodworking endeavors.

There are many users of Onshape and considerable online support that is available for free. You can make assemblies and even automate motion in them. I have not tried it, but I understand there is some capability to do analysis to simulate loads and resulting stresses to check mechanical integrity of a design under load.

By comparison, I find it much easier to use and more robust than Google Sketchup. It is also easier to create dimensioned drawings from and if designs are created carefully, the dimensions can be changed and everything will update accordingly. I have never been able to get Google Sketchup to allow me to make changes without basically starting the whole project over again.

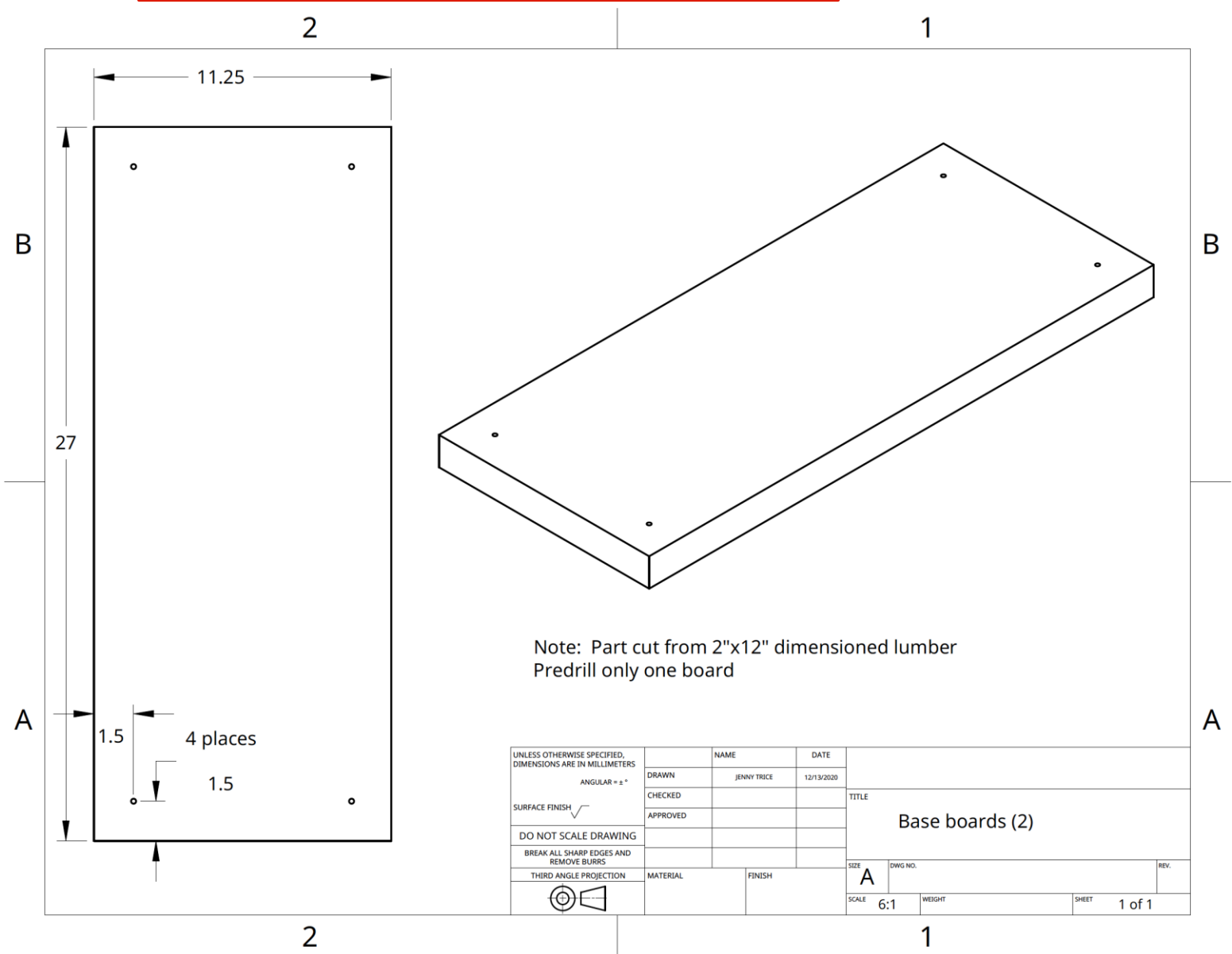
Continued on next page

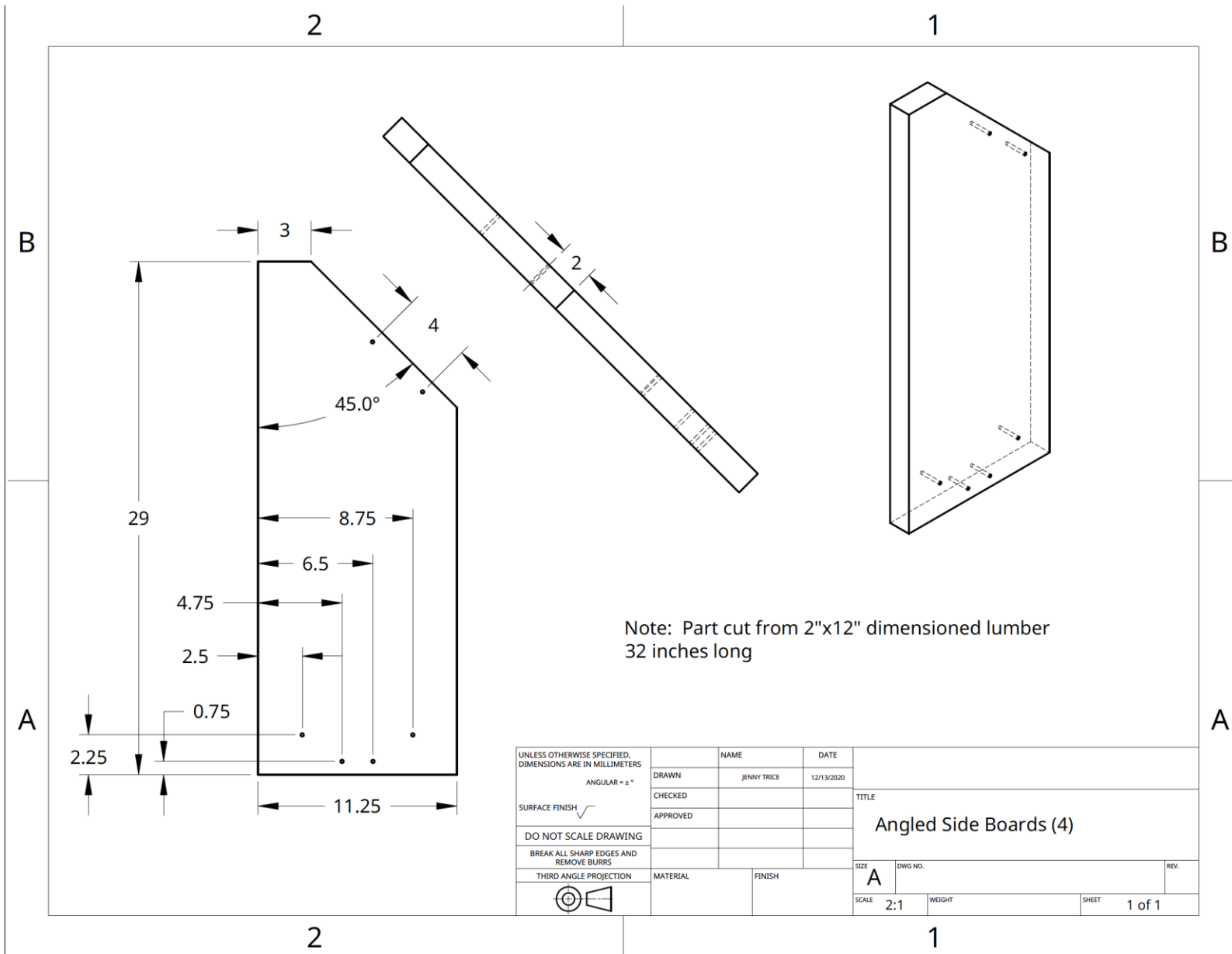


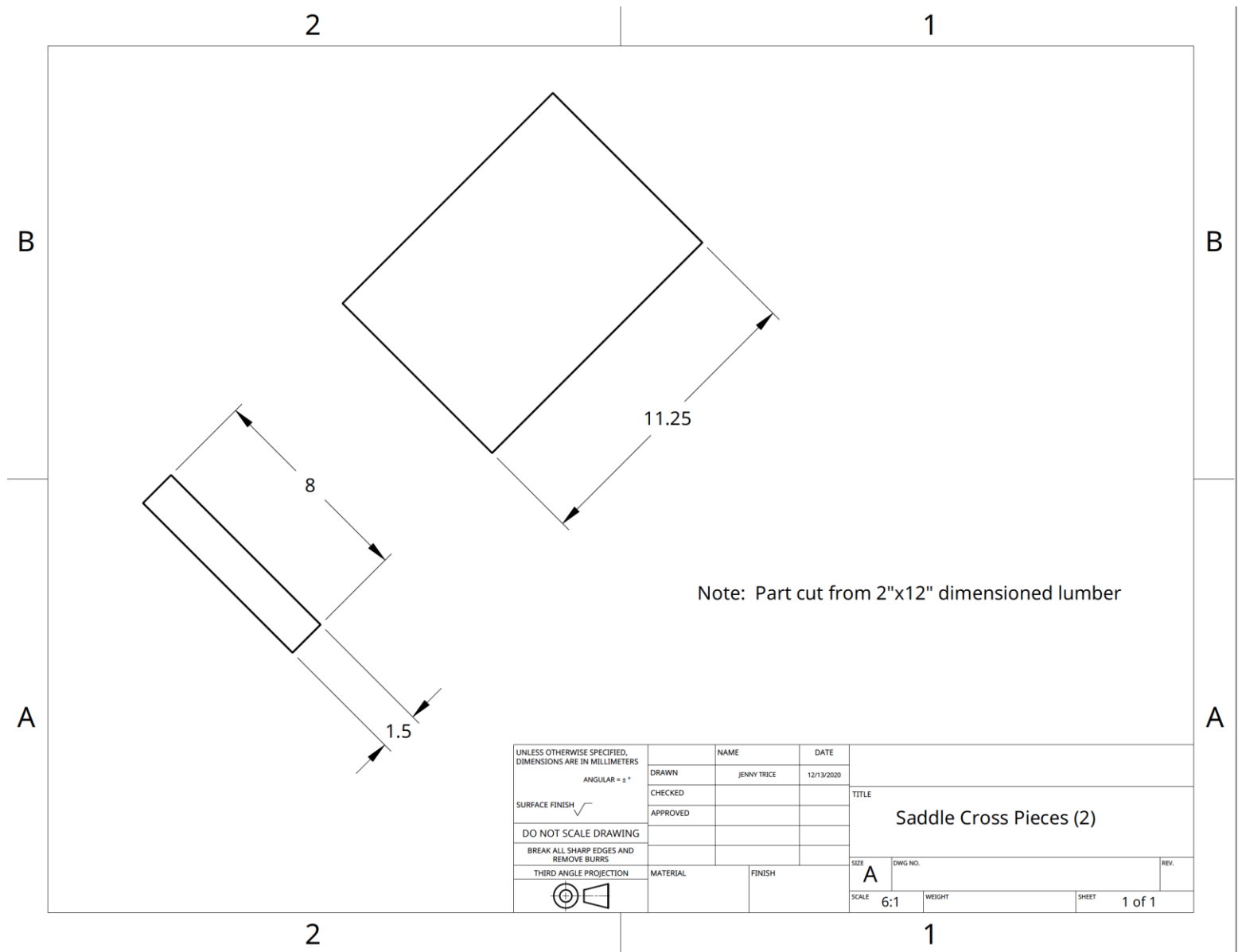




Log Processing Center – LPC (cont'd). Sheet 2

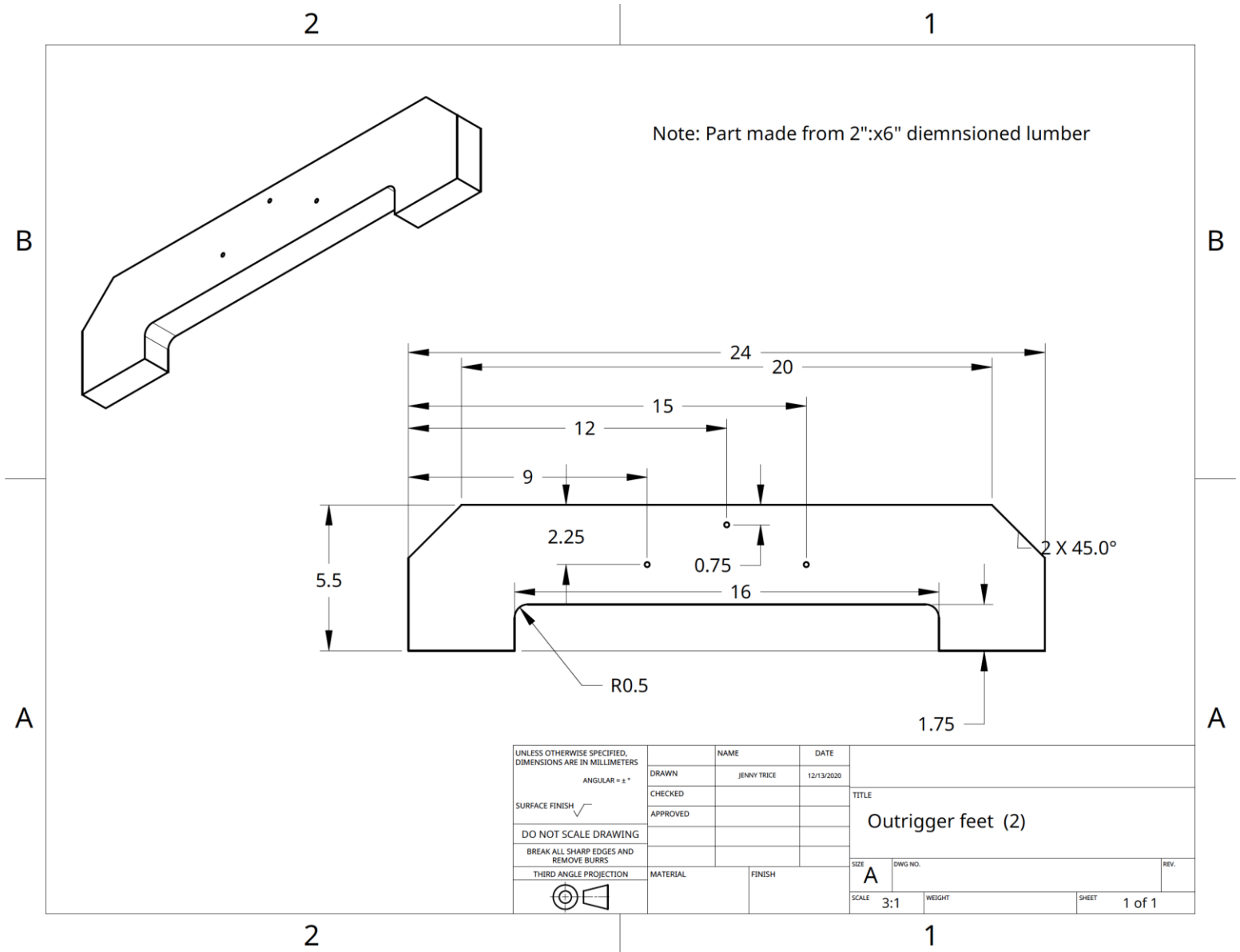






UNLESS OTHERWISE SPECIFIED, DIMENSIONS ARE IN MILLIMETERS ANGULAR = ± °	DRAWN	NAME	DATE	TITLE Saddle Cross Pieces (2)	
	CHECKED	JENNY TRICE	12/13/2020		
	APPROVED				
	DO NOT SCALE DRAWING			SIZE A	DWG NO.
SURFACE FINISH ✓				SCALE 6:1	WEIGHT
BREAK ALL SHARP EDGES AND REMOVE BURRS					SHEET 1 of 1
THIRD ANGLE PROJECTION		MATERIAL	FINISH		REV.







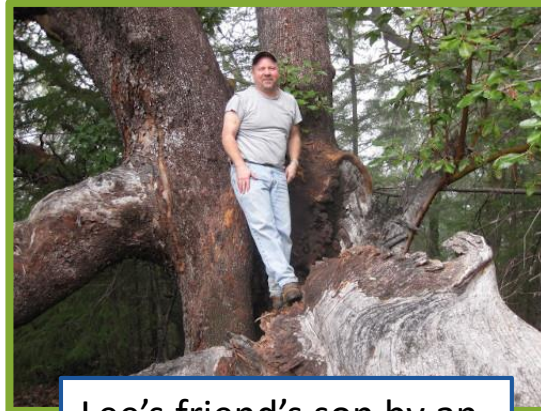
Methusala Tree

Lee Tourtelotte

Lee Tourtelotte has a friend in California, quite near Mike Mahoney's ranch, on whose property are thousands of redwood trees, black oaks and madrones, many laden with large burls



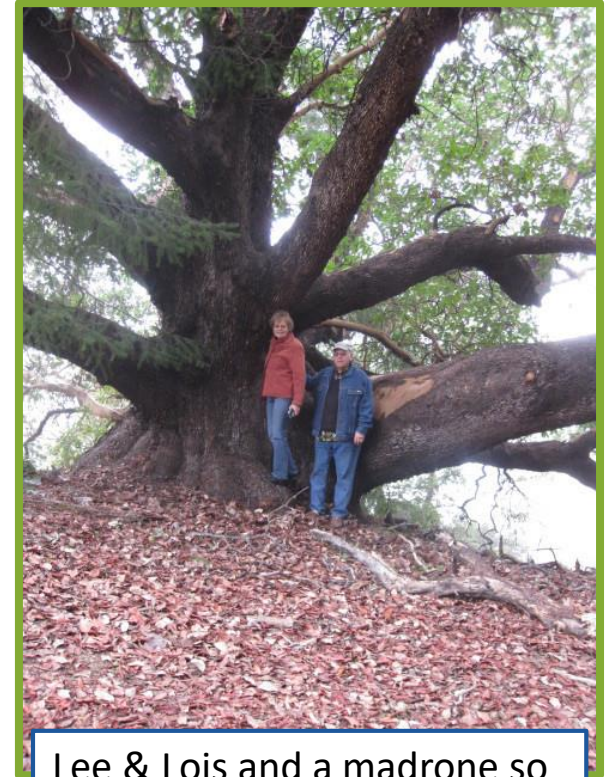
One of thousands of burl-laden redwoods



Lee's friend's son by an ancient madrone



Lee turned a bowl from this black oak burl



Lee & Lois and a madrone so old it is called "Methusala"





Methusala Tree

Lee Tourtelotte



Lee's bowl from the black oak burl

Consider registering for this outstanding woodturner's program

AAW
Master
Series

Live Online Event

Betty Scarpino

Design and Inspiration for Woodturners

Saturday, January 23, 2021 - 3 p.m. Eastern Time

Kickstart your creative approach! Join us online for an extraordinary conversation with the remarkable Betty Scarpino, AAW Honorary Lifetime Member and acclaimed woodturning artist. Moderated by Cindy Drozda.

Betty will offer an in-depth exploration into woodturning design using a fast-paced PowerPoint presentation. From beginner to advanced, there will be inspiration for everyone.

- Hear about ingrained concepts and pushing boundaries.
- Learn about the deconstruction process and how using this method can make additional design variations possible.
- Find out how to evaluate the success of surface design and embellishment combinations, from subtle to outrageous.

Cost: \$15 (\$10 for AAW Members)

Registration: Open thru Friday, January 22, at noon ET.

More information and to register, visit
<https://tiny.cc/AAWMasterSeries>

AAW
AMERICAN ASSOCIATION
OF WOODTURNERS
WE ARE TEACHING THE WORLD TO TURN





Maple Burl & Others

Call me about a 4 ft. long maple burl and others at 763-441-4086.

John Enstrom





Pres. Lee Luebke

WOOD SEALER

At this time sealer is available from:

Lee Luebke, Corcoran MN, lguebke@comcast.net

Julie Abbott, Eden Prairie MN, JulieAbbott@EdinaRealty.com

Bob Meyer, Lino Lakes MN, rjmbobco@comcast.net

Steve Mages, Minnetonka, smages@juno.com

Paul Laes, Cottage Grove, Woodforfun@hotmail.com

I am looking for others to sell sealer throughout the metro area.

Bring plastic jugs if you have them.

Sealer \$10.00 gallon.



We need heavy duty plastic jugs for dispensing sealer.

If you have any gallon containers, we could sure use them. It would be best if you could bring your empty containers to be filled.

The club now has a chip card reader so you can pay Lee Luebke by credit card or cash. Each gallon is still \$10.

Anyone wanting to sell sealer can buy a quantity from me if you like or take some gallons and sell them to members and send the money to Treasurer Mark Debe.

Lee Luebke, President MWA, 612-419-8743





Please send items for the Bulletin Board to: mdrprof@gmail.com

As a group which cannot meet in person, we'd like to keep up with our friends and hear about awards, shows, family news (weddings, accomplishments of children and grandchildren), retirements, hospital stays, illnesses, book recommendations, website recommendations and anything else you would normally talk about in person at MWA or Sub-Group meetings. All of these and more are possibilities for the Bulletin Board. We're not seeing our MWA friends face-to-face, but we still need to stay in touch.



My brother told our mother that
W.T.F. means
“Wow! That’s Fantastic!”
It has really made our texting a lot
more interesting.



Lathe Contact List

The MWA Newsletter is presenting a list of members who would be happy to give you pros & cons and experiences with the lathes they own or with which they have had experience. This list is being updated every week as more members are contacting me saying they'd be happy to be listed. If you would be willing to have your name and email address listed under the type of lathe(s) you have, please contact me .

LATHE	Member	Email address
Bonnie Klein Mini 12x18	Linda Ferber	lindajaneferber@gmail.com
Craftsman Professional	Steve Mages	smages@juno.com
Delta mid size 12"	Randall Thompson	thomp013@umn.edu
Delta mid size 12"	Dan Larson	dhjlar@comcast.net
Delta midi	Bob Meyer	rjmbobco@comcast.net
Delta midi	Joe Zwirn	joezathome@msn.com
Grizzley G 0733	Martin Young	martin.clay.young@gmail.com
Harbor Freight(Central Machinery 10x18)	Rusty Ogren	rick.Ogren@consolidated.com
Jet 1015	James Zangl	james.zangl@gmail.com
Jet 12/21	Lee Luebke	lguebke@comcast.net
Jet 14x42	Rusty Ogren	Rick.Ogren@consolidated.com
Jet 1640	Joe Zwirn	joezathome@msn.com
Jet 1642 EVS	Jenny Trice	jennytrice@aol.com
Jet 1642 1.5 hp	Greg Just	woodturner07@gmail.com
Jet JML 10/14 Mini	Neil Robinette	northsideturners41@gmail.com
Jet JWL - 1220VS	John Campbell	campbell.jn@gmail.com



Lathe Contact List (cont'd)

Laguna 12/16	Lee Luebke	lguebke@comcast.net
Laguna 18/36	Jay Schulz	ifschulz@comcast.net
Laguna 18/36	Dan Larson	dhjlar@comcast.net
Laguna 18/36	Lee Luebke	lguebke@comcast.net
Laguna 18/36	Mike Lucido	mike.s.lucido@gmail.com
Laguna Revo 18/36 220v	John Campbell	campbell.jn@gmail.com
Laguna Revo 18/36 220v	Neil Robinette	northsideturners41@gmail.com
NOVA 3000	James Zangl	james.zangl@gmail.com
Nova Comet II	Rolf Krogstad	rolf.krogstad@gmail.com
Nova Comet II	Mike Anderson	manderson4700@comcast.net
NOVA DVR 16"	Dan Larson	dhjlar@comcast.net
NOVA DVR 16"	Joe Zwirn	joezathome@msn.com
NOVA DVR XP	Bill Szydlo	szydlo.bill@gmail.com
NOVA DVR XP 16"	Chuck Shreffler	cshreffler@outlook.com
Oneway 2036	Dick Zawacki	dickzawacki@gmail.com
Powermatic 2014	Steve Legvold	stevelegvold@gmail.com
Powermatic 2520B	Steve Mages	smages@juno.com
Powermatic 3520B	Todd Williams	toddwilli@comcast.net
Powermatic 3520B	Steve McLoon	s.c.mcloon@gmail.com
Powermatic 3520C	Reid zimmerman	reidazimmerman@gmail.com
Powermatic 3520C	Dan Ernst	piloto1@comcast.net
Powermatic 4224B	Dan Larson	dhjlar@comcast.net
Powermatic 45	Todd Williams	toddwilli@comcast.net
Robust Liberty	Jim Jacobs	woodmanmn@aol.com
Robust Liberty	Warren Gerber	xlwalleye@gmail.com
Robust Sweet 16	Linda Ferber	lindajaneferber@gmail.com
Robust Sweet 16	Bob Meyer	rjmbobco@comcast.net
Robust Sweet 16	Tim Dodds	tbikefast@aol.com
Shopsmith	Martin Young	martin.clay.young@gmail.com
Vega 2600	Bill Szydlo	szydlo.bill@gmail.com
Vicmarc VL 300	Lee Tourtelotte	leetourtelotte@icloud.com



Member Help Line

The club has organized a "Member Help Line", the purpose of which is to answer questions/give advice and help educate our membership. Even though it is more difficult during the Covid-19 social distancing time to help people in home workshops, there are still ways to help each other with woodturning questions/problems. The volunteers can help via email, telephone, Zoom, some personal contact using social distancing and masks, and probably other ways we haven't tried yet.

Maybe you're a beginner looking for advice on what to buy.

Maybe you have questions on chucking.

Maybe you have sharpening questions.

The volunteers listed on the next page are more than happy to help. Some have listed areas in which they feel more comfortable, but all will help with your woodturning question.

We would like more members to volunteer for our Member Help Line. If you would like to be "on call" please contact Mike Rohrer at mdrprof@gmail.com with your phone #, email address, area where you live, areas you'd be willing to help with, and your name will be added to the list.



Member Help Line

Mike Rohrer	612-276-9556	mdrprof@gmail.com	bowls, boxes	South Mpls
Steve Miller	715 821-8726	ssmiller920@gmail.com	all types, light on segmenting	River Falls, WI
Lee Tourtelotte	612-670-1874	leetourtelotte@icloud.com	all types, beginner, advanced	South Mpls
Warren Gerber	651 403 2883	xlwalleye@gmail.com	Bowls	Mendota Heights
Jim Jacobs	651-497-1309	woodmanmn@aol.com	beginner/advanced, segmenting, skews	Hastings
Dick Zawacki	507-744-5748	dickzawacki@gmail.com	general, bowls, wood carving	Northfield
Mike Lucido	651-738-2551	mike.s.lucido@gmail.com	general woodturning	Woodbury
Bill Campbell	715-338-2634	wm.e.campbell@uwrf.edu	general woodturning	River Falls, WI
Mark Kelliher	651-636-8678	markandkathy007@comcast.net	general woodturning	Arden Hills
Todd Williams	651-274-4658	toddwilli@comcast.net	general woodturning	Lake Elmo
Bob Meyer	651-483-6187	rjmbobco@comcast.net	bowls, ornaments, sharpening, gen'l.	Lino Lakes
Dick Hicks		rbhicks@rbhicks.com	platters, spindle work, bowls	Zoom from shop
Steve Mages	952-544-5286	smages@juno.com	general woodturning	Minnetonka
Neil Robinette	763-639-1085	northsideturners1@gmail.com	sharpening, tool control, turning vs budget	Brooklyn Park
Andy Levesque	651-769-4070 TEXT	andy.m.levesque@gmail.com	resin/epoxy casting, hybrid turning, vacuum stabilizing, CNC & laser engraving	Lindstrom
Rusty Ogren	612-990-4857	rustywoodsart@gmail.com	resin questions, crack filling	Plymouth
Dan Ernst	651-280-7484	pilot01@comcast.com	coring, wing bowls, bowls, gen'l turning	Maplewood, St Paul
Bill Szydlo	651-206-5547	szydlo.bill@gmail.com	segmenting, sharpening, gen'l turning	Northfield, MN
James Zangl	6541-645-4696	james.zangl@gmail.com	bowls, hollow forms, vases, pens, etc	St Paul -Hamline area
Joe Zwirn	612-619-4793	joezathome@msn.com	segmenting, general woodturning	Brooklyn Center
Mark Palma	612-991-7733	marksworkshop@gmail.com	finishing & color	Lanesboro



MWA Demonstrations Since July 2017

<u>Newsletter</u>	<u>Demo</u>	<u>Demonstrator</u>
July 2017	Hollowing for Embellishment	Gary Mrozek
Aug 2017	Turning & Decorating a Platter	Jeff Luedloff
Sep 2017	Bowl Coring	Neil Robinette
Oct 2017	Traditional Platter, Viking Bowl	Glenn Lucas
Oct 2017	Natural Edge Bowl	Bob Meyer
Nov 2017	From Tree to Bowl	Dan Larson
Dec 2017	Turning Ornaments	Jim Jacobs
Jan 2018	Making a Pendant	Alan & Lauren Zenreich
Feb 2018	Spindle Turning/Milk Paint	Linda Ferber
Mar 2018	Chain Saw Safety & Techniques	Steve Hagen
Apr 2018	Lidded Boxes	Steve McLoon
May 2018	Hollow Forms & Platters	Trent Bosch
	Platters & Bowls	Mike Mahoney
June 2018	Travel Mug	Greg Just
July 2018	Log Preparation & Sawmill	John Enstrom
Aug 2018	Squarish Platter	Mike Hunter
Sep 2018	Pens	Ed Mielech & Rick
Aug 2018		
Oct 2018	Safe & Comfortable Turning	Eric Lofstrom
Nov 2018	Finishing	Mark Palma
Dec 2018	Finials	Steve McLoon
	Lefse Sticks	Jim Jacobs
	A Shop	Todd Williams
	Handles	Tim Heil
Jan 2019	Scandinavian Inspired Bowls	Dan Larson
Feb 2019	Segmented Turning	Curt Theobold
Mar 2019	Peppermills	Tom Sciple
Apr 2019	3-Legged Stool	Keith Gotschall
May 2019	Baby Rattle with Captive Rings	Gary Mrozek
June 2019	Spheres & Embellishments	Steve McLoon
July 2019	Wood-Mizer Portable Sawmill	John Enstrom
Aug 2019	Finial Box	Cindy Drozda
Sep 2019	Spalting	Seri Robinson
Oct 2019	Rings True to Life	Phil Holtan
Nov 2019	Be More Creative	Beth Ireland

<u>Newsletter</u>	<u>Demo</u>	<u>Demonstrator</u>
Dec 2019	Holiday Ornament	Bob Meyer & Mike
Hunter		
Jan 2020	3-Pointed Vase/Box	Tom Sciple
Feb 2020	Long-stem Natural Edge Vessel	Rudy Lopez
Mar 2020	Hollow Form	Lyle Jamieson
May 2020	Shop/Multiple Topics	Mike Mahoney
Mini # 11	Bowl Turning. Part 1	Dan Larson
Mini # 12	Bowl Turning. Part 2	Dan Larson
Mini # 13	Christmas Bell Ornament	Robin Costelle
Mini # 13	Irish (Glenn Lucas) Platter	Dick Hicks
Mini #15	Log Processing Center	Lee Tourtelotte/Dan Larson
Mini #16	Coring	Dan Larson/Dan Ernst
Mini #17	Wing Bowl	Dan Ernst
Mini #18	Finials	Dick Hicks
Mini #19	Natural Edge Bowl	Bob Meyer
Mini #20	End Grain Platter	Dan Larson
Mini #21	Michael Mode Style Bowl	Lee Tourtelotte
Mini #22	Super Simple Segmenting	Jim, Jacobs
Mini #23	Turning & Painting a Mushroom	Linda Ferber/Rosanne Gold
Mini #25	Stamping & embossing	Joan Sauvageau
Mini #27	Pepper Mills	Steve Miller
Mini #28	Marking Turnings	Linda Ferber
Mini #29	Texturing, embossing	Mike Peace
Mini #31	Xmas Ornament	Hunter/Meyer
Mini #32	Calabash Bowl	Emiliano Achaval
Mini #34	Bowl Basics, Twice Turned	Sam Angelo
Mini #35	Shop design, arrangement	Mark Palma
Mini #36	Skew Fundamentals	Jim Jacobs
Mini #38	Lidded, beaded bowl	Glenn Lucas
Mini #39	Christmas ornaments, gifts	Dan Larson, Dick Hicks
Mini #40	Richard Raffan style box	Mike Hunter
Mini #43	Walnut; Quarter-sawn platter	Mike Mahoney



Editor's Notes

I hope everyone is enjoying their enforced isolation time in their shop.

Finish your Beads of Courage boxes for the Bob Jensen memorial and get the pictures to me.

Photos of the Member Challenge are beginning to come in. Remember, deadline for the February Challenge is my bedtime on Saturday, January 30.

Stay healthy. Get vaccinated when your turn comes up.

Mike Rohrer

Editor

mdrprof@gmail.com



GEEZ, YOU MISS ONE PAYMENT...

