

Minnesota WoodTurners Association

A LOCAL CHAPTER OF THE AMERICAN ASSOCIATION OF WOODTURNERS

AAW | AMERICAN ASSOCIATION
OF WOODTURNERS

Mini Newsletter No.29

Remember when you
were little and all your
underwear had the days
of the week on them.
Those would be helpful
right now.



Instant Gallery



Warren Gerber

These are my COVID peppermills inspired by Steve Miller's demo reported in the Mini Newsletter #27. I made the larger 8" oak mill in the back row in a class that Steve taught a few years ago at the club. The other 6" mills are black walnut; one made from Russian olive. The ones with the flatter tops are close in form to the ones Tom Sciple made at his demo carried in the March 2019 Newsletter.

It is very helpful to have the list of MWA Demonstrations carried in the newsletters to use as a reference when we start a new project. And now with the club's zoom demos available, we have another excellent source of material to help improve our woodturning experience.



Instant Gallery (cont'd)

James Zangl



A neighbor gave me a piece of red oak. It cracked, so I gave it a little help. I carved, burned, and embellished it with stone dust, gold gilt and finally polished it.



Instant Gallery (cont'd)

Mike Rohrer

A few years ago we took down an old cedar fence, which had been up about 20 years. I saved a significant amount of the wood that was still in good shape.



I used some of the 4 x 4 posts to make a couple of bowls. I cut sections of the post, planed the edges and joined them in a 4-piece block about 7"x7". When I was making the baseball bat/baseball graduation present for my NYC grandson, I made a few cedar baseballs for practice.



Instant Gallery (cont'd)

Mike Rohrer



6 ½ h, 5 ¾ w



6 ¼ h, 5 ¾ w



Instant Gallery (cont'd)

Warren Gerber suggested for Show 'n Tell for the SE Metro group showing a turning that ended up being something different than the original plan. I don't know if others had anything because I missed the first 35 minutes due to Zoom problems.

Mike Rohrer



I sanded out the broken area



Several years ago this was just going to be a small bowl. Near the end of turning, I got a bad catch and broke out a good chunk.



I keep this on a narrow shelf at eye level behind my lathe. The notch makes it very easy to grab the chalk I use multiple times for each turning. The mistake became my most used bowl.



Instant Gallery (cont'd)

Jay Schulz was asked to display his turnings at a satellite gallery for the Phipps Center for the Arts, in Hudson, WI at the Woodland Hill Senior facility. His exhibit of 67 pieces runs from September 22 to November 15. These are some of the pieces in the exhibit.



Jay Schulz



Cherry burl, walnut cap/finial;
rosewood, zebra wood cap/finial

3 Beads of Courage boxes



Cherry with walnut, maple,
padauk, birch & Brazilian cherry



White ash with cherry, walnut, maple,
padauk, birch & Brazilian cherry



Black walnut, English
walnut, maple & cherry;
collaboration w/Jim Jacobs



Instant Gallery (cont'd)

Jay Schulz



Hickory w/walnut and cherry laminate



Kentucky coffee 8" x 4 1/2"



Marblewood with Brazilian cherry cap & finial



Pacific madrone 10" x 6"



Instant Gallery (cont'd)

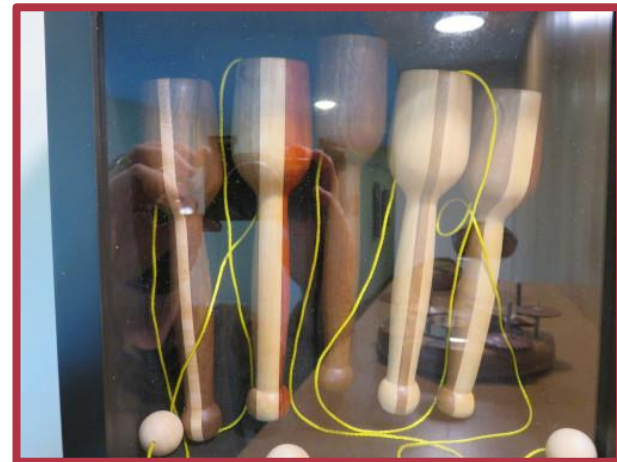
Jay Schulz



Dan Larson from his Sep 4th Tuesday Turners Tune-Up with a 13.5" basswood bowl blank. Dan cored 11", 8.5" and 6" cores and gave the three smallest blanks to Jay.



Basswood cored set from Dan Larson. A small hole in the center of the smallest one needed a walnut medallion, so they were added to the others to keep them as a "set."



Games from various woods



Instant Gallery (cont'd)

Jay Schulz



Segmented white oak and padauk w/walnut cap & finial with a marble bell



Spectraply w/padauk cap & finial



Tulipwood w/ Brazilian cherry cap & finial



Walnut & white oak



Instant Gallery (cont'd)

Ken Hallberg



Black ash burl bowl, 9"
diameter X 5" depth with
Mahoney's walnut stain



Instant Gallery (cont'd)

Doug
Johannson



Photographed this red squirrel in his/her natural wood home in the park beside the Anoka County Library . . . named the squirrel “Squire L the Red”



Ask A Turner

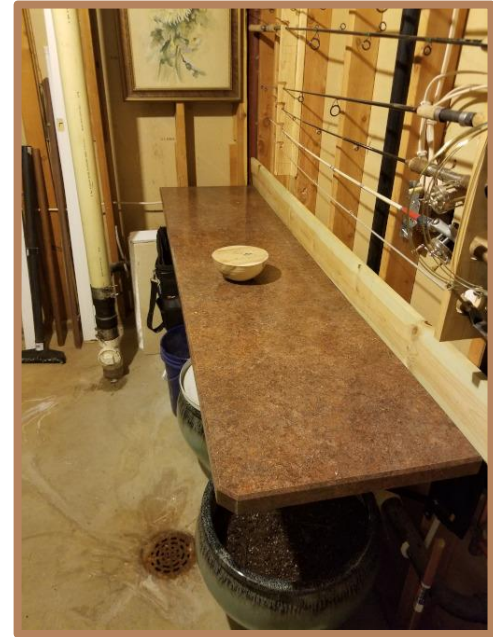
I am in the process of rough turning about 20 bowls that I intend to soak in denatured alcohol to speed up the drying process. I have two questions.

1. How long should I keep the bowls immersed in the alcohol to displace the water in the bowls?
2. I plan to store the bowls in our furnace room to continue the drying process and to have them wait for their turn. Is the evaporating alcohol from the bowls and my furnace a lethal combination?

My wife is anxious for the answer to the second question.

Answers on the following pages

Warren Gerber



My newly installed drying shelf that I was going to use to store my denatured alcohol infused bowl blanks. It's located in my furnace room. I was hoping the low humidity and residual furnace heat would help accelerate the drying process.

My wife is ordering a fire extinguisher from Amazon today.



Ask A Turner (cont'd)

Warren Gerber

Hi Warren, good question. I asked it several years ago too.

My results were: stick with one wood type. I used ash so the density of each blank was similar and found each blank or rough out required a different amount of time to get to a moisture level of 6-10%, from 3 hrs to overnight!

There are too many variables involved to give you a simple answer. One thing I was surprised to learn was that even though each time I submerged a blank and thereby diluted the denatured alcohol with water it was replacing, it didn't seem to reduce its effectiveness substantially!

The results were disappointing for me. I thought denatured alcohol drying would solve the problem of piles of paper bags filled with blanks slowly drying over several weeks or more in order to prevent checking and cracking; that process was giving me about a 70-80% success rate.

The D.A. drying system, while faster, didn't improve the success rate at all, and added more complexity to the process, taking away turning time.

As for your concern with the volatility factor for storage, my experience was the alcohol content evaporated in less than 30 min.

(continued on next page)



Ask A Turner (cont'd)

Warren Gerber

Nowadays I rarely try to rapid dry anything. I no longer mess with alcohol drying.

If I do want something to dry faster, I have a metal cabinet in the basement with a light bulb in the bottom for heat source and holes drilled in the bottom and top of the cabinet for airflow. I rough out my turning, coat all surfaces with Anchorseal and put it in the cabinet. There is much less wood/bowl loss doing this.

Good luck Warren, there are always new challenges to meet in the field of wood turning.

Neil Robinette

Turn Beads of Courage boxes. Those banks are all dry.

Jim Jacobs

(continued on next page)



Ask A Turner (cont'd)

Warren Gerber

My experience with alcohol drying a large amount of bowls was in the spring after the heating season.

1. Everyone back then had different inflexible opinions on how long to soak. I soaked mine overnight. I'm sure the length of time is going to vary with wood thickness and species.
2. I put them in the basement after the surface of the bowls appeared dry. Then I wrapped the outside of the bowl with brown paper, and blue-taped the outer rim to keep the paper on. With some I just tucked the paper over the top and pushed it inside the bowl; this second method worked better. I was concerned that in our relatively dry basement they would dry too fast and crack.
3. 30 to 40 bowls later the CO2 detectors went off in the basement. The basement reeked of alcohol as if I had a brewery going down there. We do have a gas water heater in the basement! The house is still here, however I did open all the basement windows and put a fan in the window to extract fumes.

I also weighed several of the bowls and kept track of the weight loss over the months, writing the date and weight on the paper surrounding the bowls.

(continued on next page)



Ask A Turner (cont'd)

Warren Gerber

In my case it took about 3 months for them to stop weight loss. I unwrapped a few, weighed them and observed that they lost more weight over the next few weeks.

- Anything with knots will crack.
- Anything with a large thick tenon cracked.
- If the bottom of the rough out is thicker than the rims the possibility of rim cracking increases with the increase of difference in bottom to rim thickness.

On one occasion I roughed out a trunk section of a flowering crab. The vessel turned out to be 5" diameter and 8" tall. I did not expect to avoid cracking because it was apple and it contained the pith. I put it in my alcohol soaking container and actually forgot about it. It was in there for at least 3 weeks, probably more. I discovered it when I tried putting another bowl in the alcohol. The thing only developed a small closed crack at the pith. It's still in use today and the crack never expanded.

So, who knows what the right amount of time is? As long as it's understood that there is no one procedure that fits all situations.

All wood is different, drying conditions are different, climates across the country are different.

My basement is a constant 40% humidity with air circulation. So I know what works for me. **Rick Auge**



Ask A Turner (cont'd)

Warren Gerber

Warren,

I believe there are easy answers to both questions.

- If bowls are covered with fresh denatured alcohol (at least 3 to 1 alcohol to wood by volume), in general, the majority of free, unbound water should be removed into the bulk alcohol within 24 hours. Bound water (typically 1/6 to 1/10 depending on species of wood) can take longer but it is a small enough fraction that it shouldn't be an issue. The resulting alcohol will be wet BUT IS STILL FLAMMABLE.
- If there are any sources of ignition (pilot lights from furnace or hot water heater etc. DO NOT PUT FLAMMABLE SOLVENTS, such as ethanol, into the area. Under no circumstances should you ever put flammable or combustible liquids near a source of ignition. Flammable or combustible materials include materials or liquids with a vapor pressure (anything that can evaporate (like denatured alcohol). I suggest soaking the bowls in a covered, airtight pail and drying the soaked bowls in a well-ventilated area away from sources of ignition or sparks.

Jay Schulz



Ask A Turner (cont'd)

Tim Redpath

I am a new MWA member. I am wondering if any member has experience with using a Ring Master? One came with my lathe when I bought it. I would like to explore the possibilities with it and would appreciate any help/tips etc.

Tim Redpath
tim@theredpaths.com



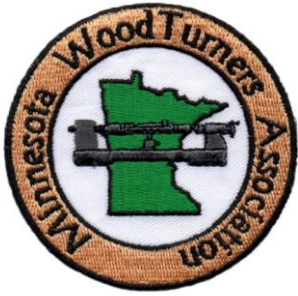
Tips For Turners

George Martin has a “Tip” in the October 2020 issue of American Woodturner, the AAW magazine, titled “Lathe Mounted Sanding Disk” on page 11. Congratulations, George.

If you look at the For Sale part of our MWA website, George is willing to make these sanding jigs for others. The details are posted.







Minnesota WoodTurners Association

A LOCAL CHAPTER OF THE AMERICAN ASSOCIATION OF WOODTURNERS



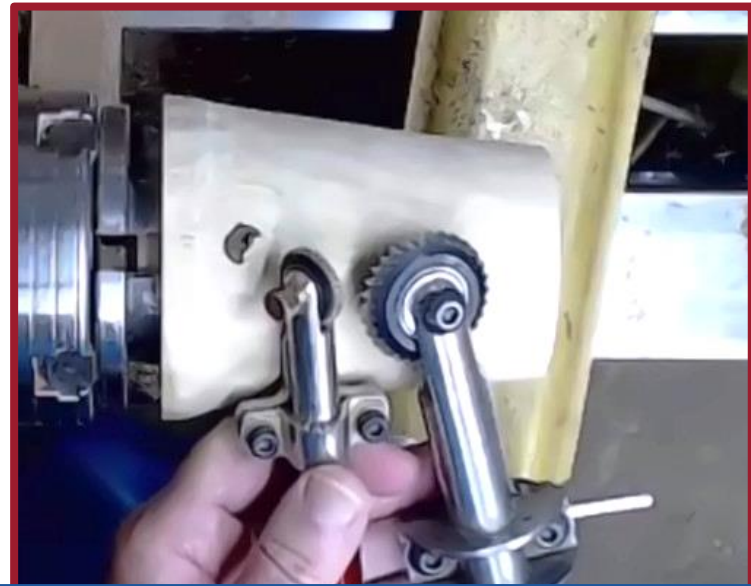
October Demo

*Mike
Peace*

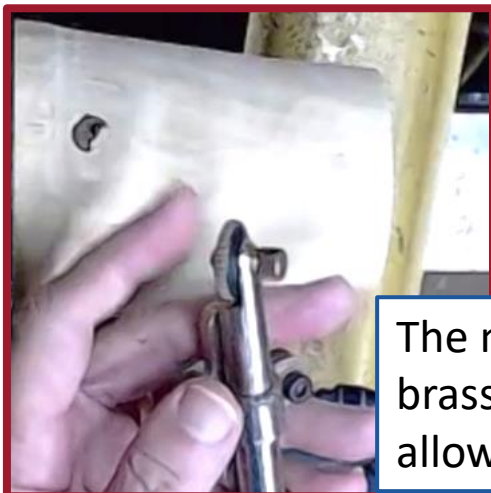
Embellishing With
Turning Tools



Mike Peace (cont'd)



Mike started the demo with the Sorby texturing tools, regular size and “micro”



The micro has a brass bushing, which allows a little play



Bring the wood to the final finish!



Mike Peace (cont'd)



The texturing wheel has pointed teeth



Keep about a 3-finger space between the piece and the tool rest



Pattern made with the large Sorby tool

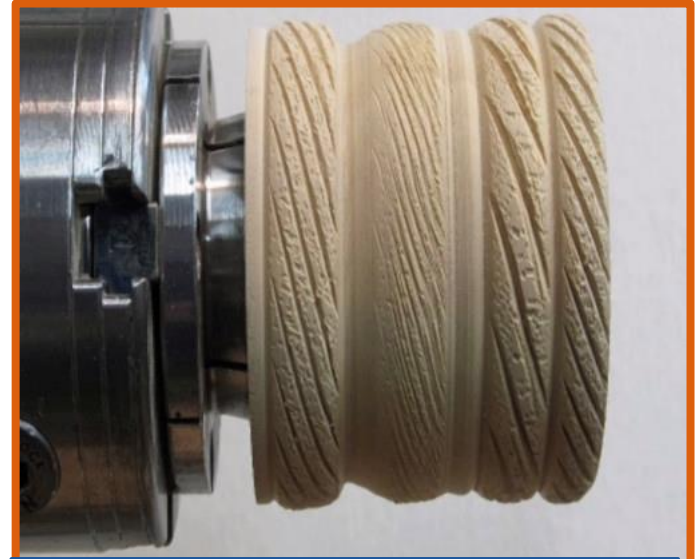


Herring bone pattern

Mike Peace (cont'd)



Acorn pattern on handle



Various spiraling rope patterns

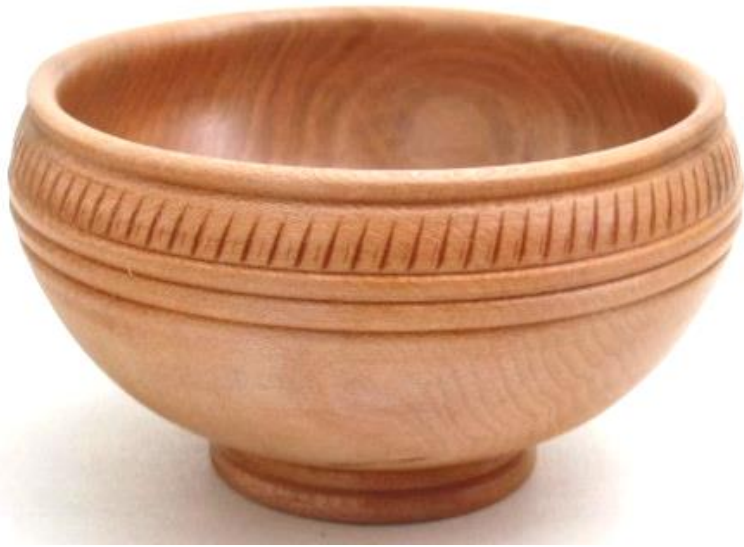


Multiple rim patterns



Spiraling pattern on cherry

Mike Peace (cont'd)



Nick Agar style; all patterns should have borders



No overlap on this pattern even though the bowl is quite tapered



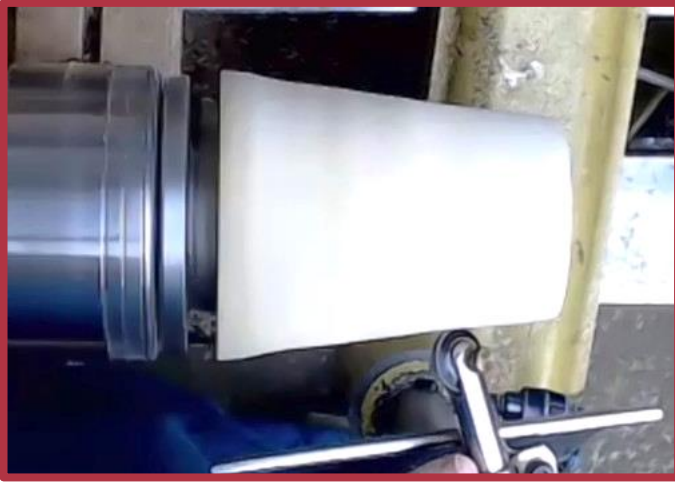
Basket pattern



Pattern on stem of chalice



Mike Peace (cont'd)



The technique with the small tool is “pivot/move”



A rounded bead with texture



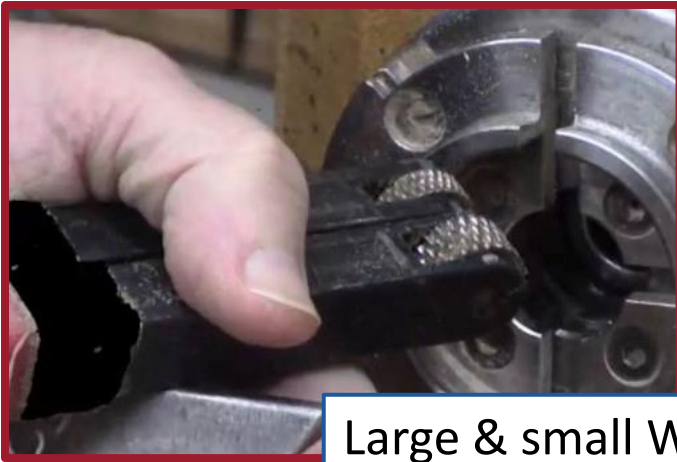
Continuing textures



This is a knurled pattern



Mike Peace (cont'd)



Large & small Wagner knurling tools



Knurling is embossing and marks the wood by “pushing in” rather than cutting



A typical embossing pattern

Mike Peace (cont'd)



For embossing on the bottom it is best to enclose it in a frame



An embossed medallion as an insert



Patterns for inserts



Mike Peace (cont'd)



A tenon on the back of a refrigerator magnet makes it easier to remove



Platter with an embossed area



Insert in a box top



Overlapping embossed pattern

Mike Peace (cont'd)

Overlapping embossing



Rosette done with Wagner tool

Rosette in exotic wood



Mike Peace (cont'd)



Rosettes on handles



Home-made Dremel & shaft tools



Spirals with Dremel tools



Inexpensive HSS bars from Harbor Freight

Mike Peace (cont'd)



Dremel tools – See the handout on Mike's website



Mike demonstrated his homemade chatter tools



Chatter tool on the end grain



Butter knife chatter tool



Mike Peace (cont'd)



Always seal the wood before applying metallic wax with your fingers



Check Mike's website for handouts, sources for metal, bars, etc.

Thanks, Mike. Great demo and lots of tips for texturing, embossing and chattering to embellish our turnings.



Monthly MWA Meeting Demonstration

Mike Peace



Pres. Lee Luebke reminded us that all of our demos are being recorded and as soon as he edits them, they are placed on our website.

See the next page for a detailed explanation of how to access these demos on the MWA website



Tuesday Turners Tune-Ups & Demos during the Covid shutdown will be archived on the MWA website

Step 1: Log into the MWA website home page



Pres. Lee Luebke is archiving the Tuesday Turners Tune-Ups and other demonstrations on the MWA website

Step 2: Under MWA Chapter, click on BLOG cartoon



Step 3 : Under ARCHIVE, click on which video you'd like to see



Winners



We had a great response to the MWA survey, and I would like to thank everyone who participated. The names of 5 members who filled out the survey were drawn and they won gift cards donated by Woodcraft. Here are the winners who will receive the gift cards in the mail.

John Gregg - Tim Dodds - Todd Williams - Peter Demitroff -Pat Griffin

The info from the survey will be used to choose demos we will try in the up-coming year for Tuesday Turners Tune-Up and our monthly Saturday meetings.

We will continue to do Zoom meetings and post recordings of the demos on our website.

Stay well everyone,

Lee Luebke
President MWA
612-419-8743

Sandy Seidel won
the cutting board
from the Linda
Ferber/Rosanne
Gold demo



Area Groups

SE Metro



The SE Metro Sub Group had a virtual get-together on Oct 1. This was organized by Warren Gerber. There were 10 attendees when I finally got in the meeting. I can't report on much because I missed the first 35 minutes of the meeting. I couldn't get into the Zoom and ended up cancelling Zoom and downloading the latest version. Zooms are great and have allowed us to stay in touch, but sometimes there are problems.



Woodturning is a great pastime. We start with what could be firewood; if we really mess up and do a terrible job . . . we've got firewood.

Warren Gerber

Men have become the tools of their tools.
Henry David Thoreau

Good workmen never quarrel with
their tools.

Lord Byron

Don't learn safety by accident.
Author unknown

Edged tools are dangerous things to handle, and
not infrequently do much hurt.

Agnes Repplier, "Wit and Humor," 1892



Nominations for upcoming November Elections of Officers and Directors

At the October 3rd, 2020 monthly Zoom meeting no additional member nominations for officers and directors for the board were offered. Elections of candidates will be at the November 7th, 2020 monthly Zoom meeting.

These Officers and Board Directors nominated and willing to serve another term.

Eligible for election and nominated to serve another term:

President : Lee Luebke

Secretary: Rosanne Gold

Director: Neil Robinette

Director: Dan Ernst

Elections will be conducted at the November 7th, 2020 meeting with those newly elected Directors assuming duties on the first day of January 2021. Election will be by a simple majority of votes cast by the membership present at the November meeting.



Member Help Line

The club has organized a "Member Help Line", the purpose of which is to answer questions/give advice and help educate our membership. Even though it is more difficult during the Covid-19 social distancing time to help people in home workshops, there are still ways to help each other with woodturning questions/problems. The volunteers can help via email, telephone, Zoom, some personal contact using social distancing and masks, and probably other ways we haven't tried yet.

Maybe you're a beginner looking for advice on what to buy.

Maybe you have questions on chucking.

Maybe you have sharpening questions.

The volunteers listed on the next page are more than happy to help. Some have listed areas in which they feel more comfortable, but all will help with your woodturning question.

We would like more members to volunteer for our Member Help Line. If you would like to be "on call" please contact Mike Rohrer at mdrprof@gmail.com with your phone #, email address, area where you live, areas you'd be willing to help with, and your name will be added to the list.



Member Help Line

<u>Name</u>	<u>Phone</u>	<u>Email</u>	<u>Areas of Turning</u>	<u>Location</u>
Mike Rohrer	612-276-9556	mdrprof@gmail.com	bowls, boxes	South Mpls
Steve Miller	715 821-8726	ssmiller920@gmail.com	all types, light on segmenting	River Falls, WI
Lee Tourtelotte	612-670-1874	leetourtelotte@icloud.com	all types, beginner, advanced	South Mpls
Warren Gerber	651 403 2883	xlwalleye@gmail.com	Bowls	Mendota Heights
Jim Jacobs	651-497-1309	woodmanmn@aol.com	beginner/advanced, segmenting, skews	Hastings
Dick Zawacki	507-744-5748	dickzawacki@gmail.com	general, bowls, wood carving	Northfield
Mike Lucido	651-738-2551	mike.s.lucido@gmail.com	general woodturning	Woodbury
Bill Campbell	715-338-2634	wm.e.campbell@uwrf.edu	general woodturning	River Falls, WI
Mark Kelliher	651-636-8678	markandkathy007@comcast.net	general woodturning	Arden Hills
Todd Williams	651-274-4658	toddwilli@comcast.net	general woodturning	Lake Elmo
Bob Meyer	651-483-6187	rjmbobco@comcast.net	bowls, ornaments, sharpening, gen'l.	Lino Lakes
Dick Hicks		rbhicks@rbhicks.com	platters, spindle work, bowls	Zoom from shop
Steve Mages	952-544-5286	smages@juno.com	general woodturning	Minnetonka
Neil Robinette	763-639-1085	northsideturners1@gmail.com	sharpening, tool control, turning vs budget	Brooklyn Park
Andy Levesque	651-769-4070 TEXT	andy.m.levesque@gmail.com	resin/epoxy casting, hybrid turning, vacuum stabilizing, CNC & laser engraving	Lindstrom
Rusty Ogren	612-990-4857	rustywoodsart@gmail.com	resin questions, crack filling	Plymouth
Dan Ernst	651-280-7484	pilot01@comcast.com	coring, wing bowls, bowls, gen'l turning	Maplewood, St Paul
Bill Szydlo	651-206-5547	szydlo.bill@gmail.com	segmenting, sharpening, gen'l turning	Northfield, MN



MWA Demonstrations Since July 2017

<u>Newsletter</u>	<u>Demo</u>	<u>Demonstrator</u>
July 2017	Hollowing for Embellishment	Gary Mrozek
Aug 2017	Turning & Decorating a Platter	Jeff Luedloff
Sep 2017	Bowl Coring	Neil Robinette
Oct 2017	Traditional Platter, Viking Bowl	Glenn Lucas
Oct 2017	Natural Edge Bowl	Bob Meyer
Nov 2017	From Tree to Bowl	Dan Larson
Dec 2017	Turning Ornaments	Jim Jacobs
Jan 2018	Making a Pendant	Alan & Lauren Zenreich
Feb 2018	Spindle Turning/Milk Paint	Linda Ferber
Mar 2018	Chain Saw Safety & Techniques	Steve Hagen
Apr 2018	Lidded Boxes	Steve McLoon
May 2018	Hollow Forms & Platters	Trent Bosch
	Platters & Bowls	Mike Mahoney
June 2018	Travel Mug	Greg Just
July 2018	Log Preparation & Sawmill	John Enstrom
Aug 2018	Squarish Platter	Mike Hunter
Sep 2018	Pens	Ed Mielech & Rick Auge
Oct 2018	Safe & Comfortable Turning	Eric Lofstrom
Nov 2018	Finishing	Mark Palma
Dec 2018	Finials	Steve McLoon
	Lefse Sticks	Jim Jacobs
	A Shop	Todd Williams
	Handles	Tim Heil
Jan 2019	Scandinavian Inspired Bowls	Dan Larson
Feb 2019	Segmented Turning	Curt Theobald
Mar 2019	Peppermills	Tom Sciple
Apr 2019	3-Legged Stool	Keith Gotschall
May 2019	Baby Rattle with Captive Rings	Gary Mrozek
June 2019	Spheres & Embellishments	Steve McLoon
July 2019	Wood-Mizer Portable Sawmill	John Enstrom
Aug 2019	Finial Box	Cindy Drozda

<u>Newsletter</u>	<u>Demo</u>	<u>Demonstrator</u>
Sep 2019	Spalting	Seri Robinson
Oct 2019	Rings True to Life	Phil Holtan
Nov 2019	Be More Creative	Beth Ireland
Dec 2019	Holiday Ornament	Bob Meyer & Mike
Hunter		
Jan 2020	3-Pointed Vase/Box	Tom Sciple
Feb 2020	Long-stem Natural Edge Vessel	Rudy Lopez
Mar 2020	Hollow Form	Lyle Jamieson
May 2020	Shop/Multiple Topics	Mike Mahoney
Mini # 11	Bowl Turning. Part 1	Dan Larson
Mini # 12	Bowl Turning. Part 2	Dan Larson
Mini # 13	Christmas Bell Ornament	Robin Costelle
Mini # 13	Irish (Glenn Lucas) Platter	Dick Hicks
Mini #15	Log Processing Center	Lee Tourtelotte/Dan Larson
Mini #16	Coring	Dan Larson/Dan Ernst
Mini #17	Wing Bowl	Dan Ernst
Mini #18	Finials	Dick Hicks
Mini #19	Natural Edge Bowl	Bob Meyer
Mini #20	End Grain Platter	Dan Larson
Mini #21	Michael Mode Style Bowl	Lee Tourtelotte
Mini #22	Super Simple Segmenting	Jim, Jacobs
Mini #23	Turning & Painting a Mushroom	Linda Ferber/Rosanne Gold
Mini #25	Stamping & embossing	Joan Sauvageau
Mini #27	Pepper Mills	Steve Miller
Mini #28	Marking Turnings	Linda Ferber
Mini #29	Texturing, embossing	Mike Peace



FREE WOOD



We live in Scandia and recently had one of our walnut trees trimmed. We have a number of good sized limbs available for woodworking and are offering them to anyone who would be interested.

christineredkomadson@yahoo.com



THE OLD WOODWORKER

a poem by William John
Longhurst, Australia

Across a bench covered with shavings and tools,
Through passionate eyes his gaze is cast.
With thoughts of children and their toys of wood,
His mind meanders through many times past.

When things that stopped working weren't cast to one side,
Or, though failing, just given a shove,
But repaired and recycled and e'en redesigned
And with a new lease of life, were reloved.

Now, though they're all gone – the boys with their toys
and little girls playing with dolls – so intense,
There are others here now to fill in the void
and delight in the wonders that Grandpa invents.

For he'll take up some pine or whatever's at hand
And look 'long the grain to see if it's straight.
From there will emerge something truly unique
But to gaze on its beauty we'll patiently wait.

As the morning sun shines through glistening dew
and reflects on his face while he dreams far away,
He warms to the thought of new projects to make
and so, he begins another new day.



Editor's Notes

Please keep sending pictures of your turnings for the Instant Gallery and Tips For Turners. Your turnings for the Instant Gallery are not in a contest. We want to see what every member, regardless of skill level, is turning.

The November Virtual MWA meeting will be at 9:00 AM Saturday, Nov. 7.

Keep safe, keep turning, keep helping to prevent the spread of the Covid-19 virus. As the recent group of infections related to Pres. Trump and his staff emphasize, your wearing a mask when you are asymptomatic helps prevent infection of others. We need to put an end to the pandemic (not the main reason, but if we get to have our monthly meetings I can get back to monthly newsletters).

Mike Rohrer, Editor, MWA Newsletter

