

Minnesota WoodTurners Association

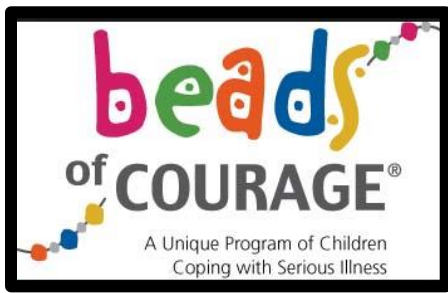
A LOCAL CHAPTER OF THE AMERICAN ASSOCIATION OF WOODTURNERS

AAW | AMERICAN ASSOCIATION
OF WOODTURNERS

Mini Newsletter No 15

Remember all those
times when you wished
the weekend would last
forever. Well, Wish
Granted. Happy Now?





Greg Just



Instant Gallery

Rusty Ogren



Spalted maple beer mug





Tips For Turners

Mike Rohrer

My “Most Used” Tool

The tool I use more than any other single tool in my shop has something to do with what I talked about in the last newsletter regarding my arthritic fingers.

I drop a large percentage of the things I pick up in the shop. Some folks would say I have “dropsy” (dropsy is an old term for the swelling and fluid accumulation in soft tissues, especially around the ankles from congestive heart failure) but I don’t.

My theory is that my brain still sends the same signals to my nerves and muscles in my hands and fingers that it has my entire life, when the signal should be, “When you pick this up squeeze HARDER, dummy, or you’ll drop it”! But it’s not so, of course, I drop it.

My back isn’t what it used to be either, so I REALLY DON’T LIKE BENDING OVER ALL THE TIME. So my most used tool is . . .

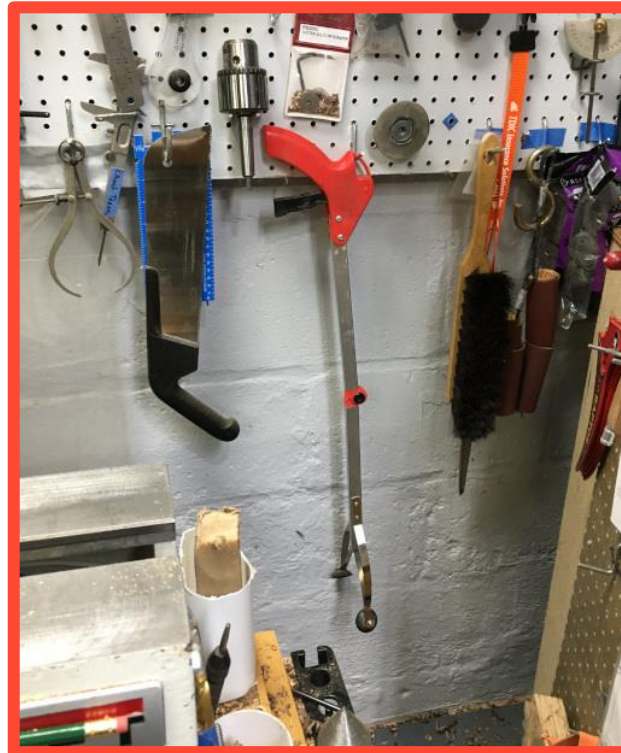


The tool they use in grocery stores, hardware stores and other stores for reaching things on high shelves!



A “reacher/grabber”

Easy to reach, just to the right of my lathe.



AAW Virtual Symposium

July 10-12



Our officers and Board of Directors should be congratulated because they have brought to our club over the last 3 years ALL of the featured turners at the symposium except one.



AAW Virtual Symposium Featured Turners Visits to MWA

Glenn Lucas

October 2017
Newsletter



Trent Bosch &
Mike Mahoney

May 2018
Newsletter



AAW Virtual Symposium Featured Turners Visits to MWA

Curt Theobald

February 2019
Newsletter



Cindy Drozda

April 2019
Newsletter



AAW Virtual Symposium Featured Turners Visits to MWA

Beth Ireland

November 2019
Newsletter



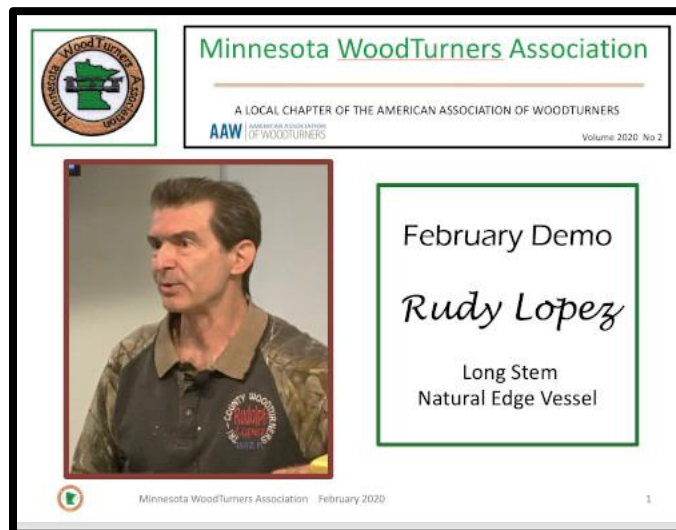
Mike Mahoney

Mini #8
Newsletter



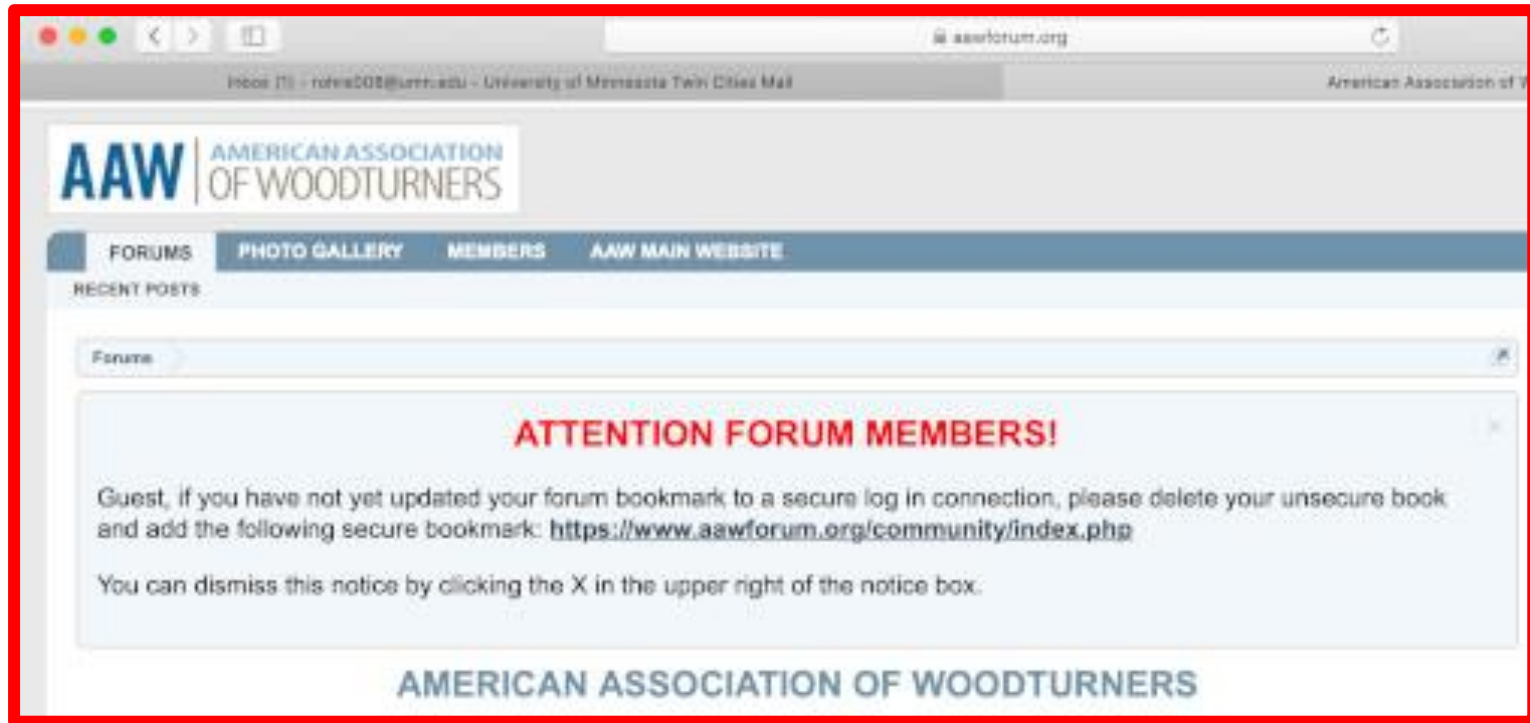
Rudy Lopez

February 2020
Newsletter



AAW Virtual Symposium

July 10-12



Make sure to “add the following secure bookmark”, sign up for the symposium and enjoy woodturning from our national organization



**How am I doing? Well
I just wiped down the
container of Lysol
wipes with a Lysol
wipe.
So I'm fine.
Everything's fine.**



June 30, 2020

MWA "Tuesday Turner's Tune-Up"

Log Processing Center

Lee Tourtelotte & Dan Larson

**TUESDAY
TURNER'S TUNE-
UP**



Pres. Lee Luebke welcomed everyone to the TTTU and introduced Lee Tourtelotte and Dan Larson who presented the Log Processing Center (LPC). Lee announced that for details on building the LPC, go to the MWA Website >MWA Chapter> Blog >2018



MINNESOTA WOODTURNERS PRESENTS



MWA "Tuesday Tune-Up"

Lee Tourtelotte & Dan Larson



Dan & Lee explained how the session would proceed. Lee explained that the LPC idea came from an article in a 2010 issue of the AAW magazine by Emmett Manly from Tennessee.

There was a demo for the MWA and because of interest, a group made about 30 kits and sold them to club members.



MWA "Tuesday Tune-Up"

Lee Tourtelotte & Dan Larson

LOG PROCESSING WITH LEE TOURTELOTTE

Lee started out with the basics of the LPC



He showed his great "wealth"
(his woodpile)

The LPC





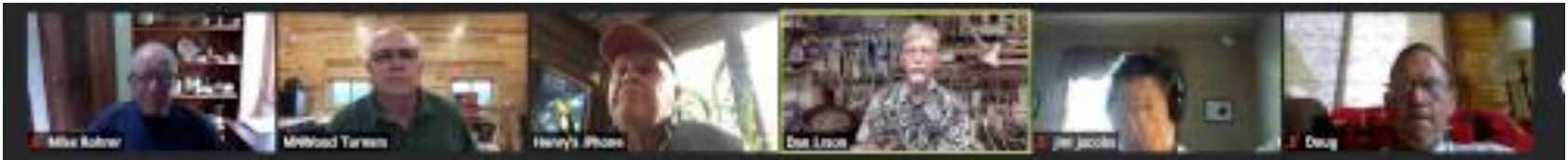
These are the patterns for the pieces of the LPC, complete with screw hole positions, which can be lent to members



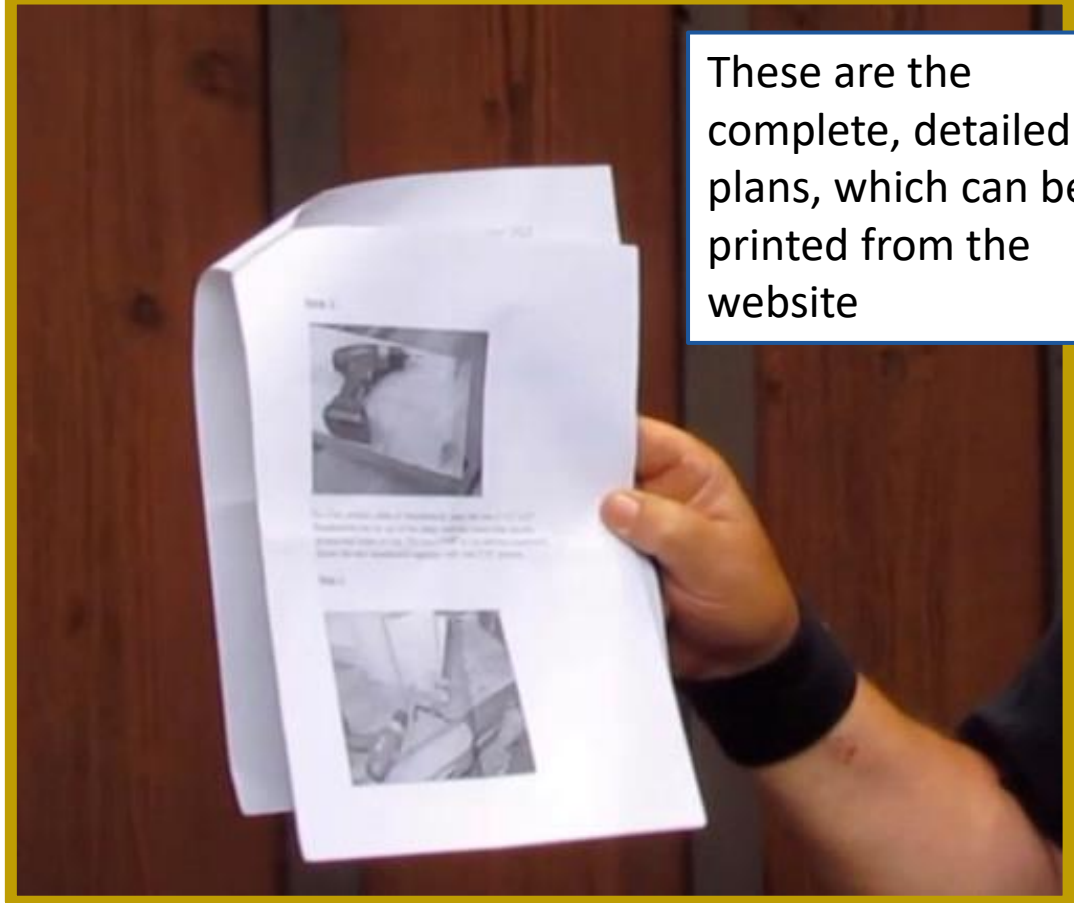
In a video, Lee demonstrated how the LPC holds and controls the log during chain sawing. When the saw is half-way through the log, the top half separates and no binding occurs.



This add-on to the LPC can be used to shape the pieces



Lee shows how using a disk for a pattern and the add-on can be used for shaping the piece



These are the complete, detailed plans, which can be printed from the website



In a video, Dan Larson demonstrated chainsaw safety while giving more detail regarding taking a log to a bowl blank



Dan demonstrated safety equipment including ear and face protection, helmet, Kevlar chaps & gloves, steel toed boots and ethanol free gasoline





Dan saws a big log to length and then cuts through the pith, which may not be in the center, on a simple, very mobile, stand that stabilizes the log



Dan marks the pith in both branches before cutting the crotch in half using the LPC

Dan claims there are 3 types of wood we have available for turning:

1. Wet, green – lots of free and bound water in the wood
2. Seasoned – wood that's been sitting around for 6 months up to 2 to 3 years
3. Full dry, kiln or air dried, or wood that has been twice turned

Even wood that has been dried can warp and change

Some comments from the group:

- Bill Campbell dries his wood with a microwave (not from the kitchen)
- Dan says he does it in increments, 1 minute at a time at half power and lets it cool between times

Handling split ends:

- Dan seals the ends OR leaves the log longer than will be needed and cuts off the ends, which will have split

Suggestion: If the pith is big enough to cut out while chain sawing, it is good for platters; if smaller, maximize the size of the bowls by including it and then getting rid of it while turning

Apple has special problems with cracking. An old saying among turners, "Apple will break your heart."



Dan has a proposal for a challenge:

UFO Sightings

UFO standing for UnFinished Object



We all have UnFinished Objects in our shops. Dan says we should bring (virtually) our objects to the Tuesday Tune-Up sessions and get ideas from the group on how to “finish” these objects that are sitting in “Turning Limbo”

More Covid-19 Thoughts

New monthly budget: Gas
\$0 Entertainment \$0 Clothes
\$0 Groceries \$2,799. Wine \$3,750

Breaking News: Wearing a mask inside your home is now highly recommended. Not so much to stop COVID-19, but to stop eating.

For the second part of this quarantine do we have to stay with the same family, or will they relocate us? Asking for myself . . .

People keep asking: "Is coronavirus REALLY all that serious?" The churches and casinos are closed. When heaven and hell agree on the same thing it's probably pretty serious.

THANKS TO FRED SCHMOLL



REPLAY: from the October 2017 newsletter



Glen Lucas

MWA was fortunate to have world-renowned woodturner and demonstrator from Ireland, Glen Lucas, present a hands-on class on Friday, Sept. 22 and an all-day demonstration on Saturday, Sept. 23.

The educational quality was superb and with the addition of his Irish wit and humor the days were extremely valuable and enjoyable for all who participated.



Hands-On Class



Glenn giving a how-to talk on setting up the Viking Bowl, before we go into the studio to start turning

"I felt this was one of the best classes I have ever attended. I am still very new at turning. I received very good advice and individual attention. I really like the professional classes. I have taken a few. As someone who is still in the beginner class it is nice to actually see what is possible. Please book more classes like these."

Jerry Grzesiak



Glenn showing Gerald Grzesiak a sheer cut on the bottom of the blank





"Glen's class helped me overcome a couple of frustrating bad habits I had developed over the last year. I came away with a really neat 'Viking Bowl' and some very helpful instruction. Wonderful class."

Reid Zimmerman



Bob Meyer (left) and Reid Zimmerman (right) setting up their blanks, being supervised by Chuck Schreffler. Glenn managed to duck as the photo was taken.



Glenn helping Greg Just set up his blank





"Glen provided the history behind the project, the Viking Bowl. He is a very enthusiastic and detailed demonstrator and is very thorough in his teaching and provided lots of details. Glen went step-by-step showing us a little at a time. He focused on sharp tools with proper grind angles. He's also very humorous and described purchasing lots of turning gifts for his wife."

Greg Just



Some stages in Greg's Viking Bowl





Saturday Demo



Bob Meyer, Mike Hunter and Eric Helland
(all the way from Duluth)



Glen explains his plan for the day:

- 1) Traditional Irish platter (history of 400 years)
- 2) Viking Bowl (history of 1000 years)
- 3) Utility Bowl – Using the Oneway coring system
- 4) Lots of sharpening points and other tips along the way



The group eagerly awaiting the day with Glen Lucas
includes all age ranges of turners





“I don’t rush. I
work slowly and
deliberately, but
EFFICIENTLY”



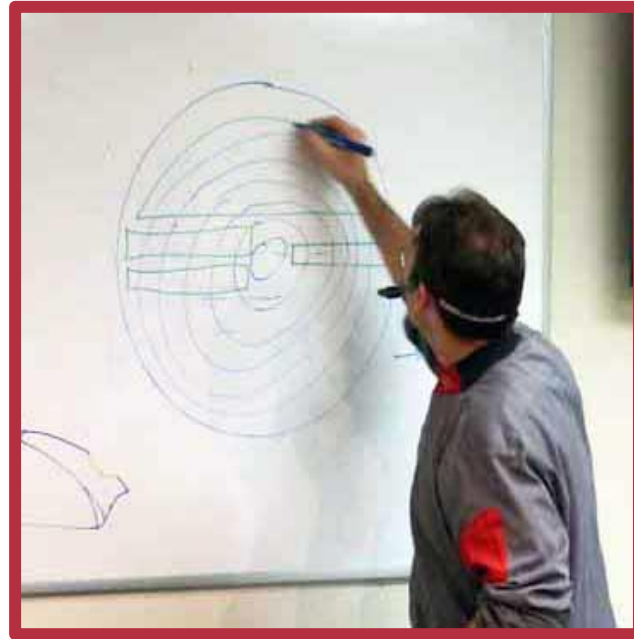
Glen's turning history

- He started turning 22 years ago as a high school student and tried turning everything
- Spindle turning dominated at the beginning
- As he became interested in woodworking, a man named Tommy Keyes lived with his family for 12 years
- Tommy was a Journeyman, someone who traveled from home to home working for people
- Probably the biggest influence Tommy had on Glen was sharpening – he taught him HOW to do it and the necessity to have SHARP TOOLS for any activity involving wood
- An interesting side note – Liam O’Neill, the person who introduced the “Irish grind” to the USA, lived 1 mile from Glen and was also taught by Tommy Keyes
- Glen started furniture making but wanted to be self-employed. He took a 2-year course from the Crafts Council which emphasized the business aspect of woodwork
- He started doing salad bowls and his business took off doing 3000/year





Glenn beginning the platter, doing the bottom first.



Using a diagram of a cross section of a tree, Glenn diagrams the best areas for platters and bowls.

The Platter

- Glen likes platters about 12" in diameter and 1 ¼ " thick. One advantage of the platter is you can get the wood from a lumber yard.
- He likes to start with a 2" thick piece so when he turns off wood to get it to 1 ¼" he releases tension, even in the kiln dried wood, and reduces the movement.
- Glen sometimes does as the Japanese do when they will apply lacquer, that is, turn wet, then turn dry and then turn a third time several days after the first dry turning.

Tips

(gathered from throughout
the demo)



- Pieces don't sell if there is not a lot of interesting grain; white/soft maple is not interesting, therefore doesn't sell nearly as well as wood with interesting grain color and patterns
- When chain sawing a log, clearly mark the pith on both ends and then be sure to line up so the log is accurately cut end to end through the pith
- With a Magic Marker make a red line down the center of the flute of the gouge. When using the gouge if you can't see the red line it won't catch; if red line shows – DANGER
- Keep your handle down below midline to relieve pressure; the lathe and turner don't have to work as hard
- A cone-shaped tail center will keep going deeper into the wood; put a washer over the end of the cone tail center to keep it from going in too deep
- Parabolic flutes are FAR SUPERIOR to "U" or "V" flutes
- Don't lock the spindle when you are unscrewing the faceplate or the chuck; it will damage the spindle
- Use a golf ball in the tailstock to center the piece on a jam chuck
- Sandpaper is GOOD at taking out small lines, BAD at eliminating torn grain
- The Woodturning Cruise in Norway is GREAT!!!



Tips (continued)



- Glen likes the Bionic face shield. He prefers the acetate shield over the carbonate. Acetate provides the best clarity of all the visor materials and tends to be more scratch resistant.
- Recess for expansion chuck: The jaws should be in a perfect circle for the most strength
- When marking a piece with dividers 1) wear a face shield, and 2) ONLY touch the wood with the left leg
- To wet sand, totally wet the piece with oil (Glen likes Mahoney's walnut oil; Glen and Mike Mahoney are great friends and enjoy playing practical jokes on each other)
- Put a MAGNET in the bottom of the oil container so you won't tip it over at the lathe
- To check the inside of a piece for evenness, run your fingers quickly across the entire piece, NOT just to the center
- To eliminate a bump with the negative rake scraper, find the bump, mark either side and just take away the bump
- Dark area in the wood indicates ground water has seeped into the wood carrying minerals and silica and it DULLS TOOLS VERY QUICKLY





To true and face the wood for the bottom, Glen makes pivoting step cuts leaving ridges. He drags across to get rid of the ridges. The quality of the cut doesn't matter. The high definition screens allow the audience to see in detail in 2 different directions, from above and from the tool rest.



Glenn discussed how he and Craft Supplies work together developing his signature tools.





Glen starts the rim before the center.



The rim is finished and in this image the ogee shape of the rim is very obvious.



Glen makes the bases of platters and bowls wide enough to be practical, that is, to not tip when in function





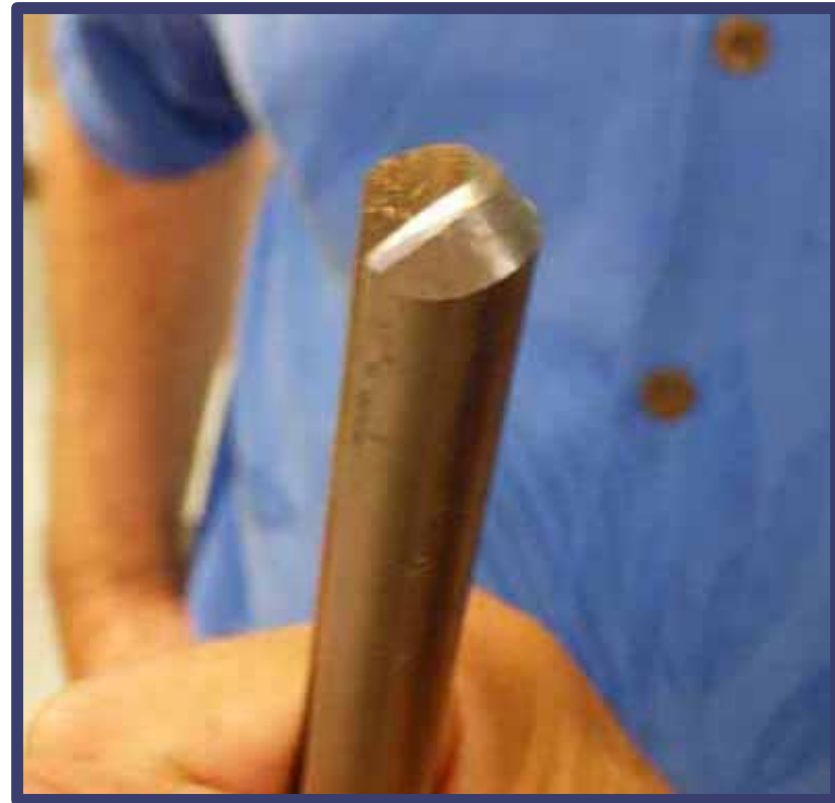
Finished bottom of platter with recess

At the break audience members inspect the finished bottom of the platter





With the platter held in the chuck with the recess, Glen begins the removal of the wood from the center. Glen doesn't take too much from the center before finishing the rim to conclusion.



Glen's "bottom feeder" gouge ground at 60 degrees with an almost square end. The secondary bevel provides relief space for going around the bend. The ears are slightly relieved to help prevent a catch.





Glen uses this modified scraper to finish the recessed foot . One quarter inch on the left starts next to the recessed rim then he rolls the curved portion into the center which is crowned.



Glen's negative rake scraper



He sharpens the tip on the CBN wheel by turning it by hand

Glen begins coring the large piece of wood to make the utility bowl with the Oneway coring system. In his shop this takes him less than a minute.





Glen begins with the outside of the utility bowl



The core is removed. Glen sells these to amateur woodturners



This is a special 6 inch face plate fitted with three bolts ground to a point, with a one inch "post" in the center to stabilize the bowl blank. Faster than a screw chuck in production



The 3rd demo of the day was the Viking Bowl, known in Scandinavia for over 1000 years. The large amount of wood chips is emphasized in the screen view.



Wood chips are flying, keeping the folks in the first row awake. The Vikings probably didn't wear face masks-they wouldn't fit over their helmets.





Glen uses CBN wheels and Tormek grinding systems. He has color coded attachments for each tool to save time in sharpening.



This jig fits over the tailstock spindle and one or more cutters can be attached at exact diameters to mark where to cut for recesses, tenons, etc.



Dan Larson's always excellent camera work lets the audience see the demo in great detail on the 4 high definition screens





Lots of wood chips. The sign of a good demo



Glen had only a few DVDs left and grateful attendees were having him sign them



Glen provided the MWA 2 fantastic days of great woodturning education, humor and the feeling that we had made a new and amazing friend!



MWA Demonstrations Since July 2017

Warren Gerber suggested that I incorporate an easy way to locate a previous demo that has been documented in the newsletter since July 2017. No one has said they don't like it, so I'll continue.

Mike Rohrer, Editor

<u>Newsletter</u>	<u>Demo</u>	<u>Demonstrator</u>
July 2017	Hollowing for Embellishment	Gary Mrozek
Aug 2017	Turning & Decorating a Platter	Jeff Luedloff
Sep 2017	Bowl Coring	Neil Robinette
Oct 2017	Traditional Platter, Viking Bowl	Glenn Lucas
Oct 2017	Natural Edge Bowl	Bob Meyer
Nov 2017	From Tree to Bowl	Dan Larson
Dec 2017	Turning Ornaments	Jim Jacobs
Jan 2018	Making a Pendant	Alan & Lauren Zenreich
Feb 2018	Spindle Turning/Milk Paint	Linda Ferber
Mar 2018	Chain Saw Safety & Techniques	Steve Hagen
Apr 2018	Lidded Boxes	Steve McLoon
May 2018	Hollow Forms & Platters	Trent Bosch
	Platters & Bowls	Mike Mahoney
June 2018	Travel Mug	Greg Just
July 2018	Log Preparation & Sawmill	John Enstrom
Aug 2018	Squarish Platter	Mike Hunter
Sep 2018	Pens	Ed Mielech & Rick Auge
Oct 2018	Safe & Comfortable Turning	Eric Lofstrom
Nov 2018	Finishing	Mark Palma
Dec 2018	Finials	Steve McLoon
	Lefse Sticks	Jim Jacobs
	A Shop	Todd Williams
	Handles	Tim Heil

<u>Newsletter</u>	<u>Demo</u>	<u>Demonstrator</u>
Jan 2019	Scandinavian Inspired Bowls	Dan Larson
Feb 2019	Segmented Turning	Curt Theobold
Mar 2019	Peppermills	Tom Sciple
Apr 2019	3-Legged Stool	Keith Gotschall
May 2019	Baby Rattle with Captive Rings	Gary Mrozek
June 2019	Spheres & Embellishments	Steve McLoon
July 2019	Wood-Mizer Portable Sawmill	John Enstrom
Aug 2019	Finial Box	Cindy Drozda
Sep 2019	Spalting	Seri Robinson
Oct 2019	Rings True to Life	Phil Holtan
Nov 2019	Be More Creative	Beth Ireland
Dec 2019	Holiday Ornament	Bob Meyer & Mike Hunter
Jan 2020	3-Pointed Vase/Box	Tom Sciple
Feb 2020	Long-stem Natural Edge Vessel	Rudy Lopez
Mar 2020	Hollow Form	Lyle Jamieson
May 2020	Shop/Multiple Topics	Mike Mahoney
Mini # 11	Bowl Turning. Part 1	Dan Larson
Mini # 12	Bowl Turning. Part 2	Dan Larson
Mini # 13	Christmas Bell Ornament	Robin Costelle
Mini # 13	Irish (Glenn Lucas) Platter	Dick Hicks
Mini #15	Log Processing Center	Lee Tourtelotte/Dan Larson



Walnut for Charity

Jim Jacobs recently picked up a huge pile of walnut. The contractor who donated it would like it used in a charitable way. Jim will be making some bead box kits from it. These are available for \$25.00 which includes shipping to your door. These are intermediate level kits.

The other option is come pick up what you want and make a donation. The money will go to the Salvation Army who let us hold meetings at their headquarters in Roseville for several years. Walnut is in Hastings. Call or text Jim Jacobs 651-497-1309.



Wood to Share with Turners



I have gotten a fair amount of wood that needs to be shared with fellow turners. It was cut last winter. I have buckthorn, oak, walnut, cherry, hickory. All about 4" and bigger.

Please call Ben Pawlak at 952-938-6452.



For Sale



I am now offering a new style bead box kit.

These have the body and top assembly ready to go on the lathe. Designed for the intermediate wood turner.

Total cost of \$25.00 includes shipping to your door.

Can accept checks or Pay Pal.

Contact Jim Jacobs

woodmanmn@aol.com

or 651-497-1309



Member Help Line

The club is setting up a "Member Help Line", the purpose of which will be to answer questions /give advice/ and help educate our membership. Maybe you're a beginner looking for advice on what to buy. Maybe you have questions on chucking. Maybe you have sharpening questions. We would like more members to volunteer for our Member Help Line. If you would like to be "on call" please contact Mike Rohrer at mdrprof@gmail.com with your phone #, email address, area where you live, areas you'd be willing to help with, and your name will be added to the list.

Name	Phone	Email	Areas of Turning	Location
Mike Rohrer	612-276-9556	mdrprof@gmail.com	bowls, boxes	South Mpls
Steve Miller	715 821-8726	ssmiller920@gmail.com	all types, light on segmenting	River Falls, WI
Lee Tourtelotte	612-670-1874	leetourtelotte@icloud.com	all types, beginner, advanced	South Mpls
Warren Gerber	651 403 2883	xlwalleye@gmail.com	Bowls	Mendota Heights
Jim Jacobs	651-497-1309	woodmanmn@aol.com	beginner/advanced, segmenting, skews	Hastings
Dick Zawacki	507-744-5748	dickzawacki@gmail.com	general, bowls, wood carving	Northfield
Mike Lucido	651-738-2551	mike.s.lucido@gmail.com	general woodturning	Woodbury
Bill Campbell	715-338-2634	wm.e.campbell@uwrf.edu	general woodturning	River Falls, WI
Mark Kelliher	651-636-8678	markandkathy007@comcast.net	general woodturning	Arden Hills
Todd Williams	651-274-4658	toddwilli@comcast.net	general woodturning	Lake Elmo
Bob Meyer	651-483-6187	rjmbobco@comcast.net	bowls, ornaments, sharpening, gen'l.	Lino Lakes
Dick Hicks		rbhicks@rbhicks.com	platters, spindle work, bowls	Zoom from shop
Steve Mages	952-544-5286	smages@juno.com	general woodturning	Minnetonka
Neil Robinette	763-639-1085	northsideturners1@gmail.com	sharpening, tool control, turning vs budget	Brooklyn Park
Andy Levesque	651-769-4070 TEXT	andy.m.levesque@gmail.com	resin/epoxy casting, hybrid turning, vacuum stabilizing, CNC & laser engraving	Lindstrom
Rusty Ogren	612-990-4857	Rick.Ogren@consolidated.com	resin questions, crack filling	Plymouth



Editor's Notes

This is the 15th Coronavirus Mini Newsletter featuring the **Tuesday Turners' Tune-Up**, the MWA Log Processing Center, presented by Lee Tourtolotte and Dan Larson.

Glenn Lucas' class from the October 2017 is brought back for this issue.

The American Association of Woodturners' National Symposium begins Friday.

Stay safe; have fun isolating yourself in your shop.

Mike Rohrer, Editor mdrprof@gmail.com

