



Minnesota WoodTurners Association

A LOCAL CHAPTER OF THE AMERICAN ASSOCIATION OF WOODTURNERS

AAW | AMERICAN ASSOCIATION
OF WOODTURNERS

Volume 2023 July



June Demonstrator
Eric Koslowski
Gnomes



July Demonstrator
Linda Ferber
Spindles



In This Issue

Minnesota Woodturners Association

BOARD MEMBERS

Officers

PRESIDENT

Charlie Prokop

VICE PRESIDENT AND AAW REPRESENTATIVE & DEMONSTRATIONS

Linda Ferber

TREASURER

Mark Debe

RECORDING SECRETARY

Julie Abbott

Directors

Dan Ernst

Janese Evans

Rosanne Gold

Dick Hicks – Class Coordinator

Reid Zimmerman **501c3 Coordinator**

MEMBERSHIP DIRECTOR

Ken Crea

TECHNICAL SUPPORT

Janese Evans

Dick Hicks

Dan Larson

Lee Luebke

LIBRARY

Steve Clark

OTHER STAFF SUPPORT

Bob Meyer, Janese Evans - Group Purchasing

Dan Larson - Class Coordinator

Mike Hunter – Professional Demonstrations

Paul Laes – Sales at Meetings

Mike Rohrer - Newsletter

Meeting

a. Pre-Meeting

i. Beads of Courage p. 3

ii. Instant Gallery p. 14

b. June Meeting p. 22

c. July Meeting p. 26

Future Meetings p. 34

Lending A Hand p. 35

New Members p. 41

Tips for Turners p. 43

Area Group Meetings p. 45

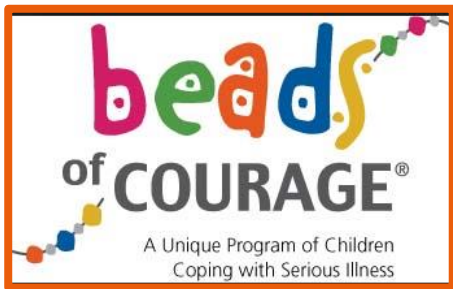
Bulletin Board p. 57

Lathe Contact p. 65

Member Help Line p. 67

Editor's Notes p. 69





June/July

Jay Schulz manages the
Beads of Courage program
for the MWA

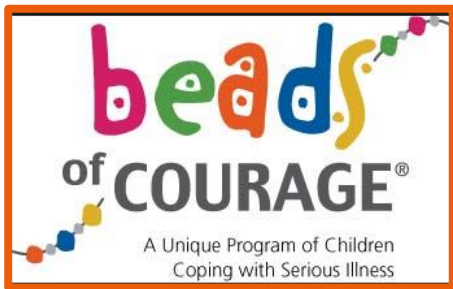


Greg Just

John Suhreptz

Jay Schulz





June/July



Greg Just



Craig Brue



June/July Beads of Courage Boxes



John and Nancy Suhreptz

June/July Beads of Courage Boxes



Denny Dahlberg

June/July Beads of Courage Boxes



Don Schlais



Greg Just



Lorraine Helferich

June/July Beads of Courage Boxes



Jim Robertson



Steve Legvold and Jay made a visit to North Memorial NICU July 21. They delivered BoC boxes, bags and toys to Katie S. who is one of the Child Life Specialists working with the NICU patients and their families.



Greg Just



Don Schlais



Jim Robertson



Martin Young



Steve Legvold



Anonymous

Diane Puetz, Pete Withoff, Rhonda Schulz, Carol Olson, Reid Zimmerman



Bob Meyer –
ball & cups

Ken Schwichtenberg -
tops





Steve Legvold & Katie S.





Remember folks, **EVERY** bead is a procedure these kids have gone through

For information about how to participate in our program, contact our MWA member who manages our program, Jay Schulz at jfschulz@comcast.net

From the diary of a Pre-schooler

My five-year old students are learning to read. Yesterday one of them pointed at a picture in a zoo book and said "Look at this! It's a frickin' elephant!"

I took a deep breath, then asked... "What did you call it?"

"It's a frickin' elephant! It says so on the picture!"

And so it does...



" A f r i c a n Elephant "

Hooked on phonics! Ain't it wonderful?

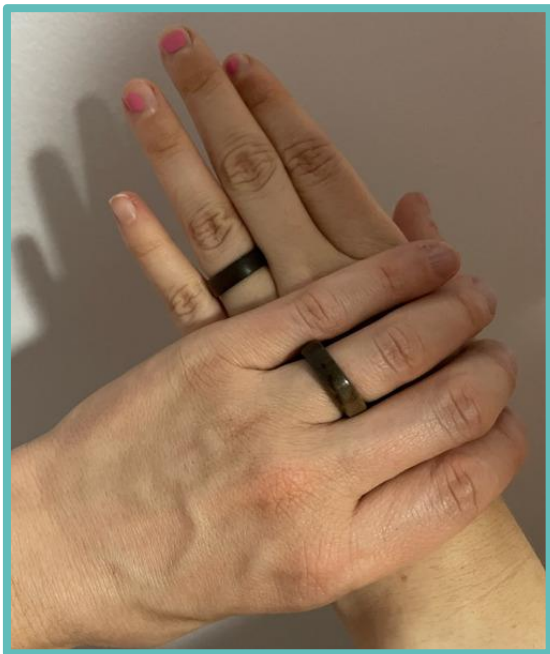
Now that's funny, I don't care who you are.





Instant Gallery (on – line)

John Campbell



Here are engagement rings that I turned for my son and his fiancé. They are not wedding rings, they are getting something else. Wood is a mystery to me. Finished with Dr's Woodshop High Build Friction Polish. Tried CA, but it got cloudy after a couple of layers.



Chalice made with IPE wood in the center and tiger wood on the exterior. Finished with walnut oil, food and alcohol safe.





Instant Gallery (on – line)

John Campbell



My first attempt at a gonk. The hat is walnut, body and nose are mystery wood. Finished with Dr's Woodshop High Build Friction Polish.



Spalted birch stabilized with Cactus Juice. End grain turning about 5 inches tall and 5 inches in diameter, finished with Beale Buffing System.



Poplar finished with Dr's Woodshop High Build Friction Polish. About 8 inches tall. I used an ELBO hollowing system that allows me to get deeper than a gouge. The hole in the middle is 6 inches deep.





Instant Gallery

James Zangl



First, I thought I'd make a natural edge bowl, then I tried a natural edge with some burned embellishments, then a little vinegar/steel wool coloring and gold-colored enhancements. I then did a cut edge bowl with the same treatment then a hollow form with the works, all from one log. Now what to do with all this stuff?





Instant Gallery

What can I make from this pile of logs?

James Zangl





Instant Gallery

James Zangl



Was it gonk or gronk? Anyway, this is my first attempt. I don't think the beard is right.





Instant Gallery

George Martin

Reuge music box. It plays a Carousel Waltz .





Instant Gallery

Some definitions and descriptions:
Dodecahedron – an object with 12 equal faces (each face represents a pentagon in a regular dodecahedron).
Dodecyl – of or pertaining to twelve.
Geodesic dodecyl sphere – a sphere with twelve equal faces.

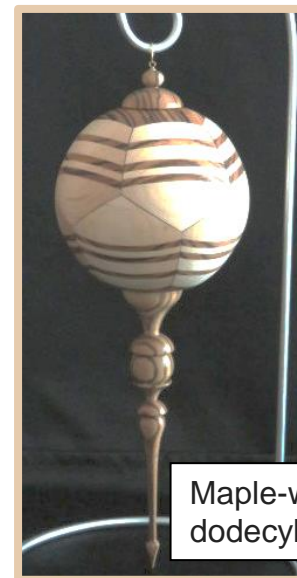


Maple-padauk petal bowl

Jay Schulz



Cherry-walnut dodecyl sphere



Maple-walnut dodecyl sphere



Zebrawood-walnut petal bowl





Instant Gallery

Jay Schulz



Walnut



If you have turned something recently, bring it to the INSTANT GALLERY at the meeting or email a photograph to mdrprof@gmail.com





Meeting June



Kids and their phones



Duane Gemelke's ready for the demo



Control Central



Plenty of good wood



Mark Debe



Mike Rohrer & Sid Buxton





Meeting June



We were treated to a great Dan Larson-produced video production of the trip Dan Larson, Dick Hicks and Dan Ernst took to Glenn Lucas's fantastic classroom in Ireland.

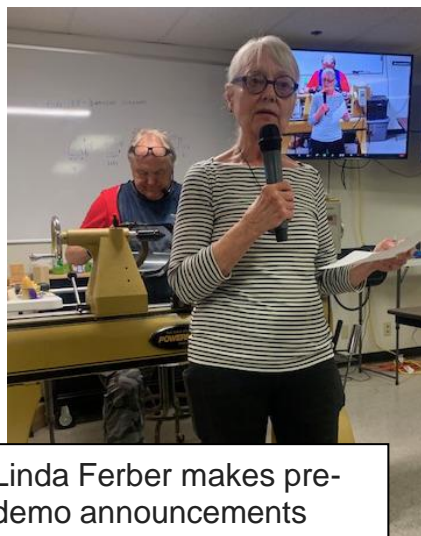




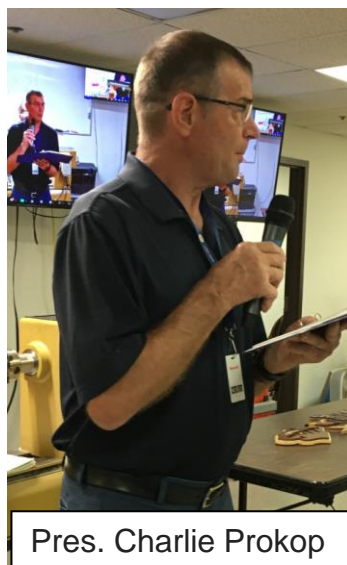
Meeting June



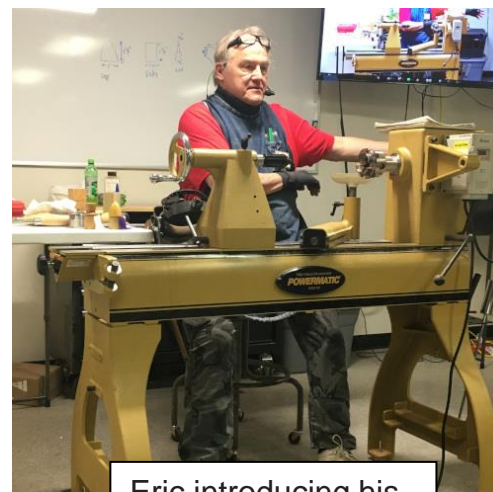
Eric Koslowski concentrating before the demo



Linda Ferber makes pre-demo announcements



Pres. Charlie Prokop



Eric introducing his demo of GNOMES





Meeting June



Eric demonstrated start to finish with the gnomes

Eric turns sitting. This is probably a thing many of us should learn to do to prolong our turning life



Eric and completed gnomes. Check his entire demo on the blog page of the MWA. Details on page x.

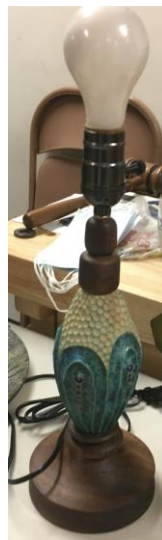




Meeting July Instant Gallery



Don Schlais & the
Instant Gallery



Congratulations,
John Suhreptz!
First Prize and
Grand Champion
Prize, Cannon
Valley Fair



Dan Larson



Dan Ernst-cherry



Al Fletcher





Meeting July Instant Gallery



Byron Patterson
Box elder/walnut



Sid Buxton



Dan Ernst-
cherry





Meeting July Member Challenge



Dave Schulte



Shauna Patterson



Eric Koslowski
Not a
contestant



Sid Buxton



Byron Patterson





July Before the Meeting



2 JEFFS
(Koltveit and
Luedloff)



Al Fletcher picking out Turning
instructional CDs from Steve Clark



Ken Crea manages our
membership program

I want to give a “Shout Out” for our CD library. When I first joined the MWA I had been turning a while but I would still have ranked myself as a beginner. At every meeting I signed out 2 CDs. For that month I could watch them over and over, stop them, go over difficult spots on the CD and then on the lathe. It’s a great way to learn and improve!

Mike Rohrer, Editor





July Demonstration

Linda Ferber



Linda had a display of pieces starting as spindles



Linda's ready to begin demo



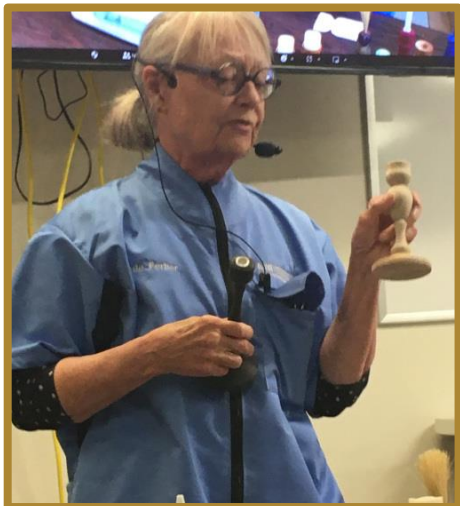
Jim Helferich examining a piece





July Demonstration

Linda Ferber



So many artistic and practical pieces can begin with a spindle



Linda's demonstrating beginning the basic spindle



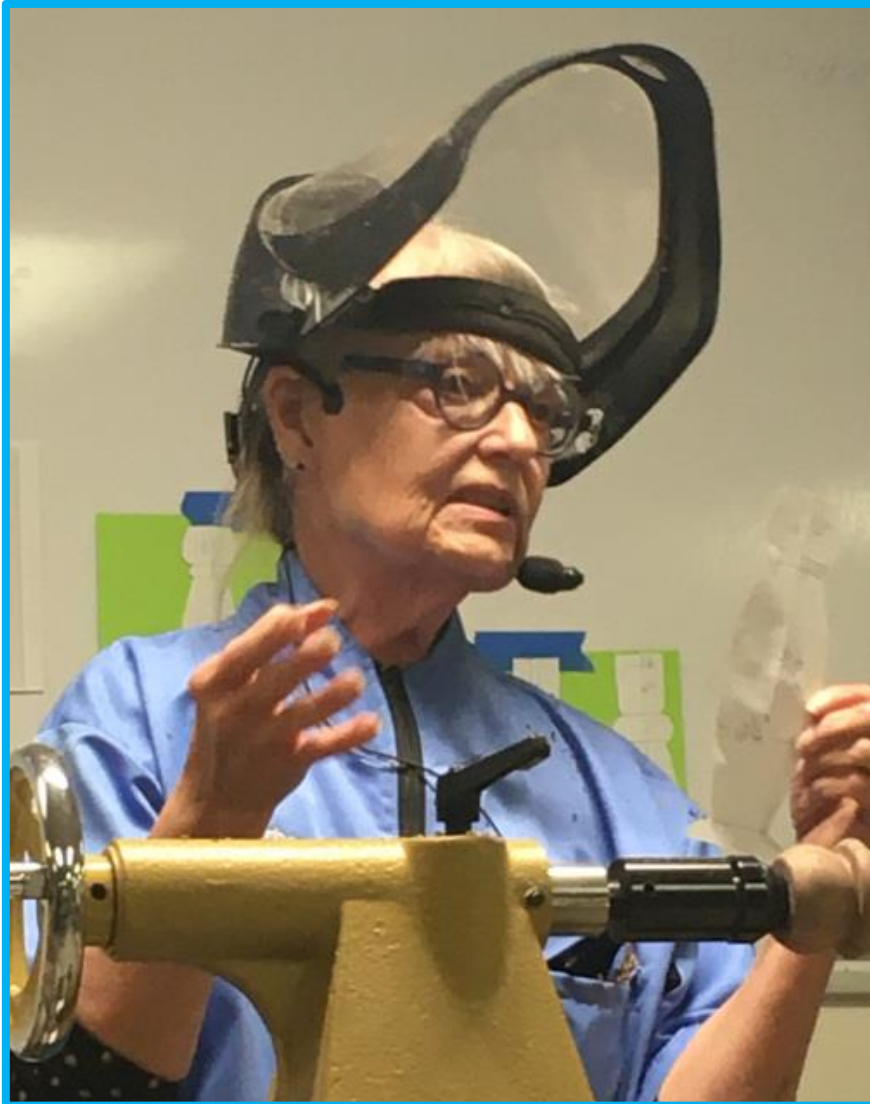
Dividing the spindle into segments





July Demonstration

Linda Ferber



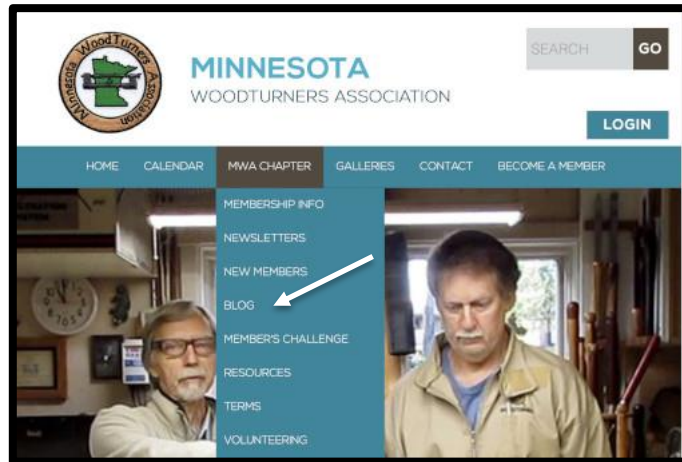
Thank you, Linda, for your great demo. Meetings like this with these great demonstrations are what make the MWA such a great value for serious woodturners.



MWA June/July Demo (cont'd)

Eric Koslowski - Kronks

Linda Ferber - Spindles



Thank you so much, Eric and Linda

The demos are available on the MWA's website under the blogs

On the Home Page, click on Blog. If this page does not show up, go to:

<https://www.mnwoodturners.com/mwa-chapter/blog/>

BLOG

Check out the 2020-2021 and other Archives. We have our Tuesday Turners Tune Up demo posted.

Navigating through the Blog you will find helpful information like how to build a log processing

ARCHIVE

- 2023
- 2022
- 2021
- 2020
- 2019

Go to 2023

Gnomes with Eric Koslowski

The Toe Turner

The Whirly Brothers go to Ireland

Spindle Turning with Linda Ferber

Click on the link to the YouTube video of the demo





FUTURE MONTHLY MEETINGS

In person and Zoom Demonstration August 2023

August 5

Demo starts at 10:00 am

Zoom is live at 9:30 am

Doors open at 9:00 am

Demo – 2 part Hollow forms

Jim Jacobs

Hogging out a large piece of wood to make a deep vase is quite an involved process. Jim Jacobs will share with us his knowledge and skills of creating hollow forms in 2 parts. There are a number of steps that Jim will cover include layout, setup, and turning techniques for this process along with how to put the piece back together. A demo not to be missed!





Lending A Hand

We bought a condo in Prospect Park in Mpls just 4 miles up the river from where we'd lived for 23 years. Just at the time we needed to move I was hit with a couple of medical problems, one of which prevented me from lifting anything, standing or climbing stairs. We needed to get all our "stuff" out. Charlie Prokop put out a call for some folks to help. Mark Palma took over organizing this group. We thought we had 5 or 6 folks coming and that would be enough. As it turned out, 13 came. In the week prior to the event on June 17 I had turned down another 25 or 30 people offering to help.

Everyone pitched right in. The furniture had been moved by "2 Guys And A Truck", so it was the other items, including everything in the basement that needed to be moved out of the house. Jeff Luedloff immediately took over organizing the volunteers. I'm sure he was a Top Sergeant in his previous life. The job was completed in 2 hours.



All Mike could do was watch



A few of the volunteers

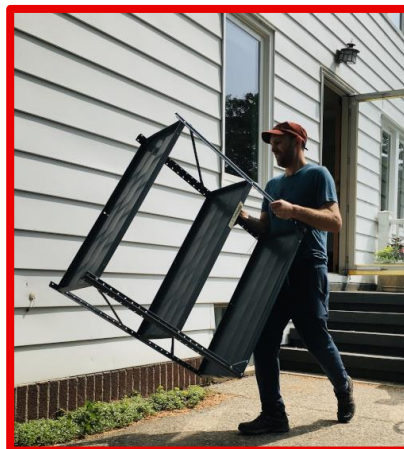




Lending A Hand



Organizer Mark Palma



Everything getting to the garage



I am so proud to be a member of the MWA, a group of people brought together by their love of woodturning. Most importantly, every member is willing to help every other member. Mike Rohrer



This just looks suspicious! 🤔





Being a little older, I am very fortunate to have someone call and check on me everyday. He is from India and is very concerned about my car warranty.



Thanks to
James Zangl





MWA August MEETING

August 5, 2023 MWA Monthly Meeting

Doors Open at 9 am

Zoom is live at 9:30 am

Demo starts at 10 am

Houck Building

12811 16th Ave N Plymouth MN 55441

Demo – Jim Jacobs – “Two Part Hollow Forms”

Bring your Spindle/Candlestick for
the Member Challenge to the August meeting

INSTANT GALLERY TURNINGS CAN BE SENT TO EDITOR MIKE ROHRER (mdrprof@gmail.com)

OR BROUGHT

TO THE MONTHLY MEETING.

MONTHLY CHALLENGE TURNINGS MUST BE BROUGHT TO THE MONTHLY MEETING

Remember Jeff Koltveit from Woodcraft will be at the meeting

You can call in an order & Jeff will bring it to the meeting





New Members June/July 2023

Welcome all new members and we all look forward to getting together face to face and meeting you soon

Paul Christenson

Jacob Koch

Brian Sick

Eric Overgaard

Doug Senn

Roger Olson

David Stolzberg

Patty Thomsen

Ken Thomsen

Eagan

Elk River

Maple Grove

Lakeville

Cottage Grove

Eagan

Minneapolis

Bloomington

Bloomington



New Members June/July 2023

Father & Daughter
Patty & Ken Thomsen



Jacob Koch



Tips for Turners

Todd Williams

I have a Powermatic 3520B: 20" swing and 35" bed. I initially thought it would be great to be able to move the head stock to the end and use the auxiliary bed to turn 30+" diameter pieces. BUT I have turned only a few platters at the 20" diameter range and have no need to go larger.

Two reasons: FEAR and MARKET. Fear, because handling a very large piece of wood which must be trimmed to a round blank can be intimidating, not to mention slow and tiring. And how do you mount it with only one person? It is heavy! Market, because I have found very few customers for platters or bowls in the 18-20" range. I have not had anyone in several years of craft shows ask for an even larger one.

I recommend staying with the 20" swing lathe, unless you are into large, architectural items. My lathe is plenty heavy, and you can always add more weight with sandbags, etc.



Tips for Turners

James Zangl

I just watched a demonstration on-line and a member of the audience asked, "What speed are you using?"

I wonder how often I have heard that question?

Now I may be mistaken with what I am about to say, but these are my thoughts.

Why do you ask about the speed? What difference does it really make? The Pro will be much more comfortable at a higher speed and be much better at telling when that speed will get them in trouble. And it seems a high speed on a Powermatic 4224 is a lot different than on a Jet 1015.

What does speed do for you? It removes wood more quickly because more wood is being presented faster. You will be able to avoid some of the bouncing caused by uneven grain or wood.

But will it give a cleaner cut? I think no. A clean cut is due to the sharpness of the tool and the presentation of the tool. A hand plane does not move fast, but if it is sharp and presented properly you will get a clean cut. If these two principles are not followed, no amount of speed will help. Am I correct?



Area & Regional Meetings

Do you live in the North Metro Area? Are you interested in an area group of woodturners?

North Metro Turners

Contact John Enstrom if you are interested in being part of a group in the North Metro

John's contact numbers:
Phone: 763-441-4086
Email: enstrom06@msn.com



Area & Regional Meetings

Hamburger Club

The Hamburger Club met Thursday, July 13 at Big Louie's for fellowship and discussion of our favorite activity, woodturning

Going around right to left...
Brenda Connors, John Enstrom, Bob Puetz, Mike Hunter, Dan Ernst, Neil Robinette, Tom Peters, Dick Hicks, Dan Larson, Steve McLoon

If you would like to be notified about the once-a-month lunch get-together, please contact Mike Hunter at huntertoolsystems@gmail.com



Area & Regional Meetings (cont'd)

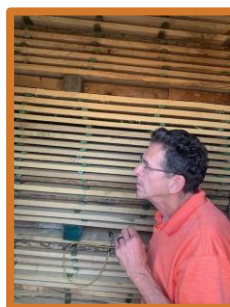
SE Metro- June

Jim Jacobs is a friend of the owners of Wood from the Hood, Rick & Cindy Siewert. He arranged a tour for the June meeting of the SE Metro group.

Wood from the Hood is an enterprise that believes that by reclaiming wood from Twin Cities neighborhoods rather than having this wood going to landfills, shredded into landscape mulch, or burned, these trees are able to live on in the form of sustainable, handcrafted wood products. They only use wood from zip codes within Minneapolis and St. Paul.



Rick Siewert explains the purpose and accomplishments of Wood from the Hood



Salvaged Twin Cities wood



Area & Regional Meetings (cont'd)

SE Metro- June



Biggest bandsaw you've ever seen to slice the big logs



Production of the highest quality furniture making wood



John Suhreptz offered Mike Rohrer a scooter so he could attend the tour





Lunch was arranged for The HOWE restaurant, just a few blocks down Minnehaha Ave.

Area & Regional Meetings (cont'd)

SE Metro-July

The annual meeting on the Mississippi River with lunch prepared by Chef Bob Hanson was held Thursday July 20

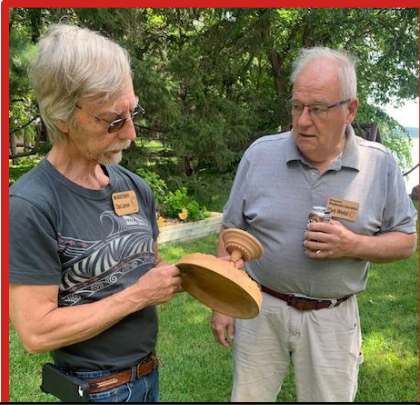


Dan Larson showing
Chef Bob a platter



Area & Regional Meetings (cont'd)

SE Metro-July



Dan Larson & Mark Wedul

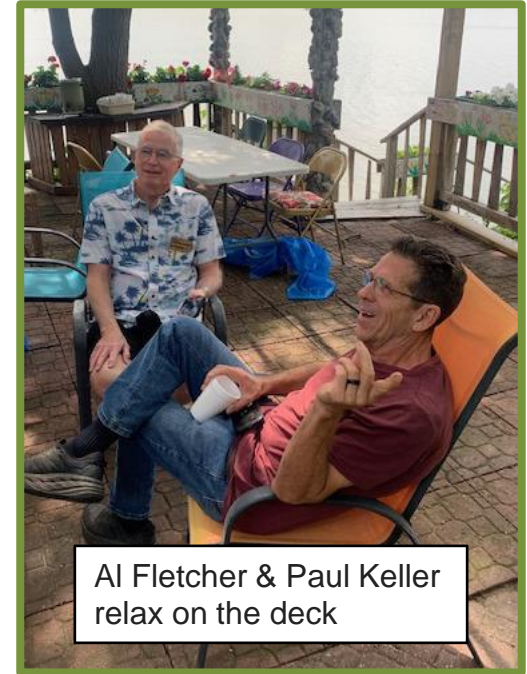


Show 'n Tell



Area & Regional Meetings (cont'd)

SE Metro-July



Al Fletcher & Paul Keller
relax on the deck



Area & Regional Meetings (cont'd)

SE Metro-July

Lee Tourtelotte and Dick Hicks wearing their Vicmarc caps. Being the only owners in our organization of Vicmarc lathes they thought they should form a User Group. Discussion continues as to who will be the president of the group.



Time for lunch!



Thanks to Chef Bob for hosting this annual summer event

Thanks to Lee Tourtelotte for the photographs



Area & Regional Meetings (cont'd)

Northeast Turners

June breakfast
meeting at the
Rusty Cow.
Meeting with
friends, talking
about woodturning.



Area & Regional Meetings (cont'd)

Northeast Turners

Saturday, July 15 breakfast meeting at the Rusty Cow.
Lots of good woodturning discussions.



If anyone would like to join in, drop an email to Greg Just at woodturner07@gmail.com. We usually meet on the third Saturday at 7:30 a.m.





**When older people say,
"Enjoy them while
they are young."
They are talking about
your knees and hips
not your kids.**



Mark Palma is the Guest Editor of WOODTURNING.
The issue includes a profile of Linda Ferber.



Mark Palma

Evaluating Cracks, Knots, and Voids

By Mark F. Palma

Oh no! Your blank is cracked! Now what? Learn how to turn cracked blanks into workable pieces (or when to let it go) with Mark F. Palma's article Evaluating Cracks, Knots, and Voids from the May 2021 edition of *Woodturning Fundamentals*.

[Click here for a direct link to the article.](#)



Mark Palma has an article in the AAW “Keep Turning”





I have some Boxelder wood from a wind damaged tree that shows raspberry colored spalting. Figured I'd take a shot in the dark to see if somebody could use it. The wood is located in Maplewood. Much of the tree has been cut up into 12" to 16" long pieces. I didn't know about streaking until it was too late and given the tree's location in my yard, chunking it up was the only safe way to bring the remainder down. The largest pieces are 12" in diameter, but I noticed some rot in the center of some of them. The smaller diameter pieces seem sound. It would be fine for people to contact me directly. Luke Harter 612-845-5855





Lee Luebke



I have 5 Log Cutting stands for sale I built from my old deck lumber. They are modeled after the instructions on our website. They are \$60.00 each and they can contact me by email at lguebke@comcast.net or by phone at 612-419-8743.





ELK RIVER REGIONAL GROUP

John Campbell and John Enstrom would like to form a regional group for the Elk River Area turners.

Conceptually, we would meet for lunch at Bootleggers in Nowthen, 19735 Iguana St. NW, Nowthen, MN 55330.

If you are interested contact:

John Campbell, 612-707-5986 and John Enstrom 763-441-4086



Rohrers' silver maple in Ireland

Last winter a big, beautiful, but sick silver maple tree in Cec's and Mike's front yard had to come down. Some of the wood went to MWA members of course. One bowl, turned by Dan Ernst, went to Ireland as a gift to Cornelia and Glenn Lucas. Dan filled the bowl with chocolate gold coins. So, a bit of Minneapolis maple has found its way to a shelf in Glenn Lucas's shop.



Glenn and Cornelia Lucas appreciating the gold coin filled maple bowl



Dan's bowl resting on a shelf in Glenn Lucas's Ireland home



WOOD SEALER

At this time sealer is available at the monthly meetings and from:

Charlie Prokop, Woodbury, MN charlieprokop@gmail.com

Julie Abbott, Eden Prairie, MN, julieabbott@edinarealty.com

Bob Meyer, Lino Lake, MN, rjmbobco@comcast.net

Steve Mages, Minnetonka, smages@juno.com

Paul Laes, Cottage Grove, Woodforfun@hotmail.com



I am looking for others to sell sealer throughout the metro area.

Bring plastic jugs if you have them.

Sealer \$20.00 gallon.

We need heavy duty plastic jugs for dispensing sealer. If you have any gallon containers, we could sure use them. It would be best if you could bring your empty containers to be filled.

The club now has a chip card reader so you can pay Charlie by credit card or cash.

Anyone wanting to sell sealer can buy a quantity from me if you like or take some gallons and sell them to members and send the money to Treasurer Mark Debe.

Charlie Prokop, President MWA





Please send items for the Bulletin Board to: mdrprof@gmail.com

As a group which has a common hobby but also is a group of good friends, we'd like to keep up with our friends and hear about awards, shows, family news (weddings, accomplishments of children and grandchildren), retirements, hospital stays, illnesses, book recommendations, website recommendations and anything else you would normally talk about in person at MWA or Sub-Group meetings. All of these and more are possibilities for the Bulletin Board. As we start seeing all our MWA friends face-to-face monthly, we can still reach the entire membership by the Bulletin Board.



Lathe Contact List

The MWA Newsletter is presenting a list of members who would be happy to give you pros & cons and experiences with the lathes they own or with which they have had experience.

This list is being updated every week as more members are contacting me saying they'd be happy to be listed. If you would be willing to have your name and email address listed under the type of lathe(s) you have, please contact me .

<u>LATHE</u>	<u>Member</u>	<u>Email address</u>
Bonnie Klein Mini	Bill Szydlo	szydlo.bill@gmail.com
Bonnie Klein Mini 12x18	Linda Ferber	lindajaneferber@gmail.com
Craftsman Professional	Steve Mages	smages@juno.com
Delta mid size 12"	Randall Thompson	thomp013@umn.edu
Delta mid size 12"	Dan Larson	dhjlar@comcast.net
Delta midi	Bob Meyer	rjmbobco@comcast.net
Delta midi	Joe Zwirn	joezathome@msn.com
Grizzley G 0733	Martin Young	martin.clay.young@gmail.com
Harbor Freight(Central Machinery 10x18)	Rusty Ogren	rick.Ogren@consolidated.com
Jet 1015	James Zangl	james.zangl@gmail.com
Jet 12/21	Lee Luebke	lguebke@comcast.net
Jet 14x42	Rusty Ogren	Rick.Ogren@consolidated.com
Jet 1640	Joe Zwirn	joezathome@msn.com
Jet 1642 EVS	Jenny Trice	jennytrice@aol.com
Jet 1642 1.5 hp	Greg Just	woodturner07@gmail.com
Jet JML 10/14 Mini	Neil Robinette	northsideturners41@gmail.com
Jet JWL - 1220VS	John Campbell	campbell.jn@gmail.com
Laguna 12/16	Lee Luebke	lguebke@comcast.net
Laguna 18/36	Jay Schulz	jfschulz@comcast.net
Laguna 18/36	Dan Larson	dhjlar@comcast.net
Laguna 18/36	Lee Luebke	lguebke@comcast.net
Laguna 18/36	Mike Lucido	mike.s.lucido@gmail.com
Laguna Revo 18/36 220v	John Campbell	campbell.jn@gmail.com
Laguna Revo 18/36 220v	Neil Robinette	northsideturners41@gmail.com



Lathe Contact List (cont'd)

NOVA 3000	James Zangl	james.zangl@gmail.com
Nova Comet II	Rolf Krogstad	rolf.krogstad@gmail.com
Nova Comet II	Mike Anderson	manderson4700@comcast.net
NOVA DVR 16"	Dan Larson	dhjar@comcast.net
NOVA DVR 16"	Joe Zwirn	joezathome@msn.com
NOVA DVR XP	Bill Szydlo	szydlo.bill@gmail.com
NOVA DVR XP 16"	Chuck Shreffler	cshreffler@outlook.com
Oneway 2036	Dick Zawacki	dickzawacki@gmail.com
Powermatic 2014	Steve Legvold	stevelegvold@gmail.com
Powermatic 2520B	Steve Mages	smages@juno.com
Powermatic 3520B	Todd Williams	toddwilli@comcast.net
Powermatic 3520B	Steve McLoon	s.c.mcloon@gmail.com
Powermatic 3520C	Reid zimmerman	reidazimmerman@gmail.com
Powermatic 3520C	Dan Ernst	piloto1@comcast.net
Powermatic 4224B	Dan Larson	dhjar@comcast.net
Powermatic 45	Todd Williams	toddwilli@comcast.net
Record Power Coronet Herald 14 x 20	Gary Egbert	gtegbert@yahoo.com
Robust American Beauty	Tim Dodds	tbikefast@aol.com
Robust Liberty	Jim Jacobs	woodmanmn@aol.com
Robust Liberty	Warren Gerber	xlwalleye@gmail.com
Robust Sweet 16	Linda Ferber	lindajaneferber@gmail.com
Robust Sweet 16	Bob Meyer	rjmbobco@comcast.net
Shopsmith	Martin Young	martin.clay.young@gmail.com
Shopsmith (restored)	Lee Luebke	lgluebke@comcast.net
Vega 2600	Bill Szydlo	szydlo.bill@gmail.com
Vicmarc VL 300	Lee Tourtelotte	leetourtelotte@icloud.com



Member Help Line

The club has organized a "Member Help Line", the purpose of which is to answer questions/give advice and help educate our membership. Even though it has been more difficult during the pandemic social distancing time to help people in home workshops, there are still ways to help each other with woodturning questions & problems. The volunteers can help via email, telephone, Zoom, personal contact using social distancing and masks if desired, and probably other ways we haven't tried yet.

Maybe you're a beginner looking for advice on what to buy.

Maybe you have questions on chucking.

Maybe you have sharpening questions.

The volunteers listed on the next page are more than happy to help. Some have listed areas in which they feel more comfortable, but all will help with your woodturning question.

We would like more members to volunteer for our Member Help Line. If you would like to be "on call" please contact Mike Rohrer at mdrprof@gmail.com with your phone #, email address, area where you live, areas you'd be willing to help with, and your name will be added to the list.

Continued on next page



Member Help Line

Mike Rohrer	612-276-9556	mdrprof@gmail.com	bowls, boxes	South Mpls
Steve Miller	715 821-8726	ssmiller920@gmail.com	all types, light on segmenting	River Falls, WI
Lee Tourtelotte	612-670-1874	leetourtelotte@icloud.com	all types, beginner, advanced	South Mpls
Warren Gerber	651 403 2883	xlwalleye@gmail.com	Bowls	Mendota Heights
Jim Jacobs	651-497-1309	woodmanmn@aol.com	beginner/advanced, segmenting, skews	Hastings
Dick Zawacki	507-744-5748	dickzawacki@gmail.com	general, bowls, wood carving	Northfield
Mike Lucido	651-738-2551	mike.s.lucido@gmail.com	general woodturning	Woodbury
Bill Campbell	715-338-2634	wm.e.campbell@uwrf.edu	general woodturning	River Falls, WI
Mark Kelliher	651-636-8678	markandkathy007@comcast.net	general woodturning	Arden Hills
Todd Williams	651-274-4658	toddwilli@comcast.net	general woodturning	Lake Elmo
Bob Meyer	651-483-6187	rjmbobco@comcast.net	bowls, ornaments, sharpening, gen'l.	Lino Lakes
Dick Hicks		rbhicks@rbhicks.com	platters, spindle work, bowls	Zoom from shop
Steve Mages	952-544-5286	smages@juno.com	general woodturning	Minnetonka
Neil Robinette	763-639-1085	northsideturners1@gmail.com	sharpening, tool control, turning vs budget	Brooklyn Park
Andy Levesque	651-769-4070 TEXT	andy.m.levesque@gmail.com	resin/epoxy casting, hybrid turning, vacuum stabilizing, CNC & laser engraving	Lindstrom
Rusty Ogren	612-990-4857	richardogren@protonmail.com	resin questions, crack filling	Plymouth
Dan Ernst	651-280-7484	pilot01@comcast.com	coring, wing bowls, bowls, gen'l turning	Maplewood, St Paul
Bill Szydlo	651-206-5547	szydlo.bill@gmail.com	segmenting, sharpening, gen'l turning	Northfield, MN
James Zangl	6541-645-4696	james.zangl@gmail.com	bowls, hollow forms, vases, pens, etc	St Paul -Hamline area
Joe Zwirn	612-619-4793	joezathome@msn.com	segmenting, general woodturning	Brooklyn Center
Mark Palma	612-991-7733	marksworkshop@gmail.com	finishing & color	Lanesboro



Editor's Notes



Recent months have been tough on me with one medical/physical problem replacing another. The MWA has been a support in more ways than one. Not only do I know that folks that love woodturning are still going through all their usual activities helping and encouraging each other, but if a member needs some assistance, they are more than willing to volunteer time and effort.

Please send me pictures of your recently completed turned pieces for the Instant Gallery. Send Tips for Turners, What's On My Lathe, Ask A Turner and things for the Bulletin Board.

If you have any suggestions for the newsletter, please contact me.

Mike Rohrer, Editor

mdrprof@gmail.com



