



# Minnesota WoodTurners Association

A LOCAL CHAPTER OF THE AMERICAN ASSOCIATION OF WOODTURNERS

**AAW** | AMERICAN ASSOCIATION  
OF WOODTURNERS

Volume 2022 December



December  
Demonstrator

*Linda  
Ferber*

**EMBELLISHING  
ORNAMENTS**



# In This Issue

## Minnesota Woodturners Association

### BOARD MEMBERS

#### Officers

##### **PRESIDENT**

Charlie Prokop

##### **VICE PRESIDENT AND AAW REPRESENTATIVE & DEMONSTRATIONS**

Linda Ferber

##### **TREASURER**

Mark Debe

##### **RECORDING SECRETARY**

Julie Abbott

#### Directors

Dan Ernst

Janese Evans

Rosanne Gold

Dick Hicks – Class Coordinator

Reid Zimmerman **501c3 Coordinator**

##### **MEMBERSHIP DIRECTOR**

Ken Crea

##### **TECHNICAL SUPPORT**

Janese Evans

Dick Hicks

Dan Larson

Lee Luebke

##### **LIBRARY**

Steve Clark

##### **OTHER STAFF SUPPORT**

Bob Meyer, Janese Evans - Group Purchasing

Dan Larson - Class Coordinator

Mike Hunter – Professional Demonstrations

Paul Laes – Sales at Meetings

Mike Rohrer - Newsletter

Member Ornament Challenge	p. 3
November Meeting	
a. Pre-Meeting	
i. Beads of Courage	p. 5
ii. Instant Gallery	p. 11
iv. Before the Meeting	p. 22
b. Meeting	
i. Main Presentation	
Linda Ferber	p. 24
ii. Member Challenge	p. 31
Tips For Turners	p. 35
New Members	p. 37
Spike's Keg of Nails	p. 38
Area Group Meetings	p. 39
Bulletin Board	p. 41
Lathe Contact	p. 48
Member Help Line	p. 50
Editor's Notes	p. 53





# EXTRA EXTRA EXTRA-READ ALL ABOUT IT

## Results of 2022

### Member Ornament Challenge Drawings





# EXTRA EXTRA EXTRA-READ ALL ABOUT IT

## Results of 2022

### Member Ornament Challenge Drawings

#### Minnesota Woodturners Ornament Challenges 2022

- Woodcraft Challenge: Prize of Woodcraft gift certificates

Woodcraft gift card winners

#### NOVICE

First Draw 3 cards Larry Thomas

Second Draw 2 cards Slip - missing name

Third Draw 2 cards Sid Buxton

Forth Draw 1 card Mike Braml

Fifth Draw 1 card Brian Karsjens

#### ADVANCED

First draw 3 cards Linda Ferber

Second Draw 2 cards Mike Rohrer

Third Draw 2 cards Jay Schulz

Forth Draw 1 card Julie Abbott

Fifth Draw 1 card Greg Just





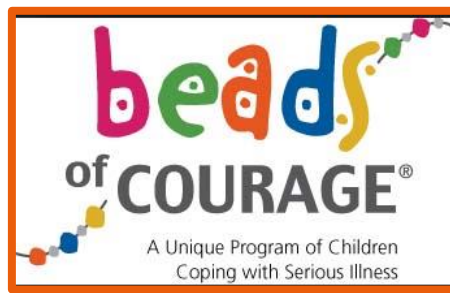


"Thank you so much to the MN Woodturners for such a beautiful gift! Isaac has over 1,000 beads (40' in length) between open heart surgery and leukemia treatments, almost all before the age of 2, and this is the perfect way to keep his beads safe and display them for the world to see. So even though he (thankfully) won't remember the days and procedures that earned him these beads, his family will forever be able to tell him the story of his courage and strength and how he overcome every obstacle presented in his life."

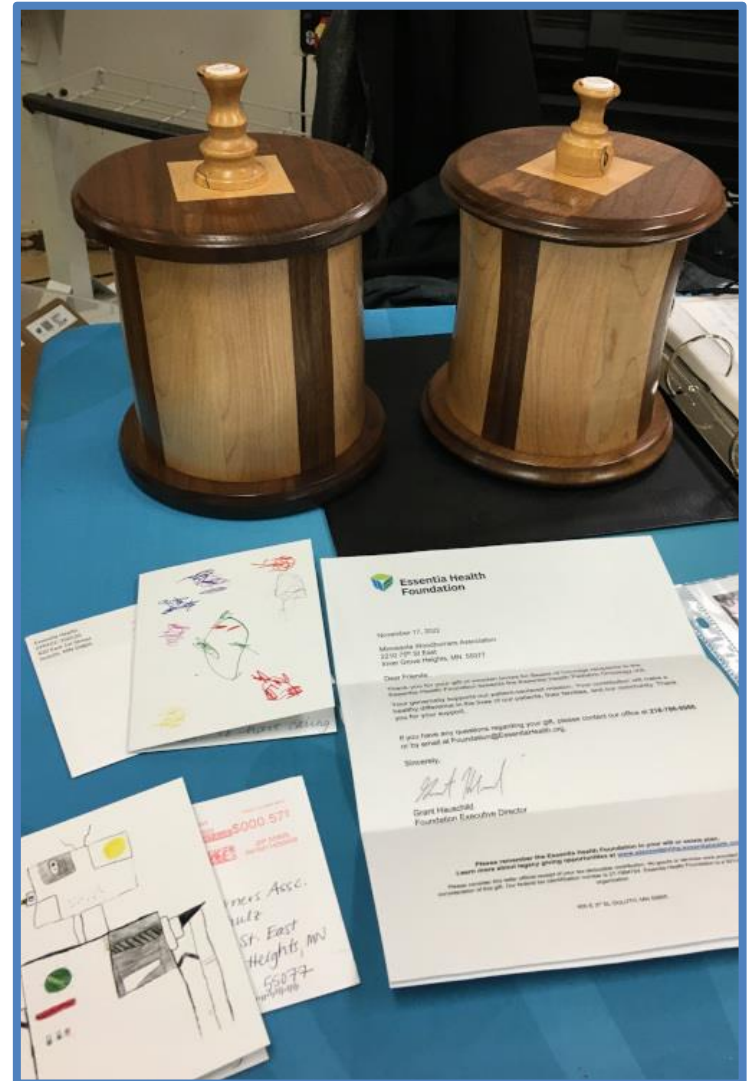
- Isaac's Mama

The first photo was taken when they received the bead box last June (2022). The photo of him with the cape was from his Gold Hope Project session and shows how much better he is doing.





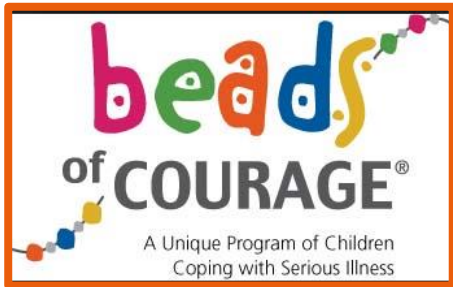
Thank you letters and  
cards from Essentia  
Health Foundation  
and young patients



Jay Schulz, Director of the MWA  
Beads of Courage program,  
making an announcement at the  
December meeting







**Pete Withoff**

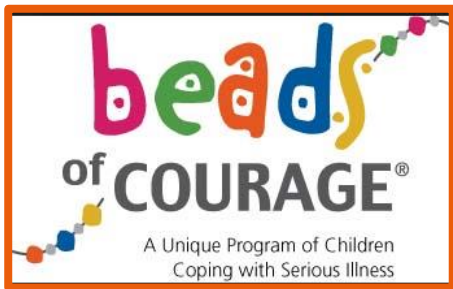


Two Beads of Courage boxes and 10 Beads of Courage bags from Pete Withoff at the December 3<sup>rd</sup> MWA meeting. Pete did the bag sewing himself. So now we have two MWA members (not wives) that sew BoC bags.





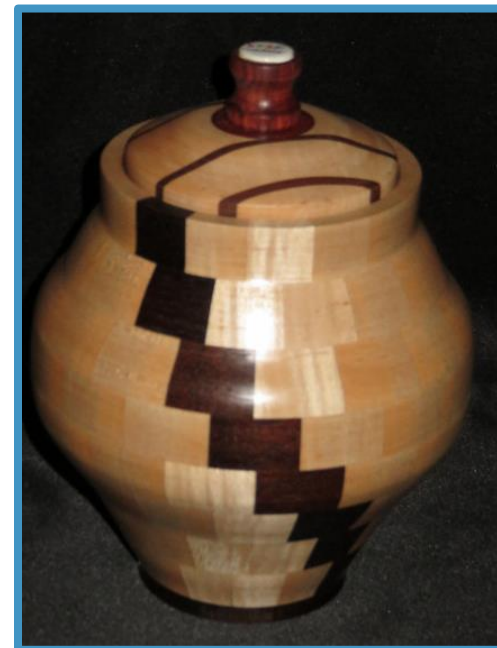




Jay Schulz is at the BoC table in the front room at all the MWA meetings. Here he is showing Jules Macellaro some items.



Anonymous  
woodturner



Be careful where you shop online. We ordered a german shepherd and now this guy lives with us.



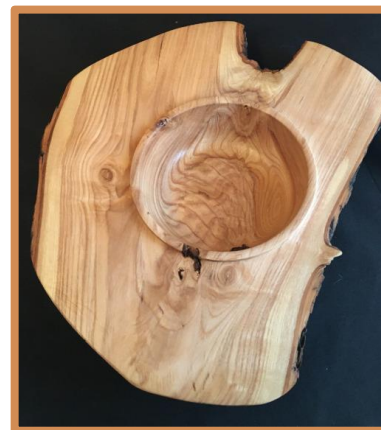
Greg Just received this Christmas present, a wooden salad bowl from IKEA, some assembly required





If you have turned something recently, bring it to the INSTANT GALLERY or email it to [mdrprof@gmail.com](mailto:mdrprof@gmail.com)

## Mike Rohrer



This was the piece from the Nov. newsletter "What's On My Lathe?" I got this fresh silver maple crotch from Lee Tourtelotte, split it and made 2 crotch wing bowls 10½" x 9" x 2". I thought the grain in the crotch, which became the bottoms of the bowls, was very interesting. Finished with 2 coats of Minwax Antique Oil.







# Instant Gallery (cont'd)

Mike Rohrer



This was another piece from the Nov. newsletter, "What's On My Lathe?" I found this bowl in the October AAW magazine. I tore out part of the page and took it to my shop.





## Instant Gallery (cont'd)

Mike Rohrer



Acorn ornaments/boxes;  
sizes range from 2 ½" to 6 ¼"



Fresh cherry from John  
Enstrom 6" x 8"







## Instant Gallery (cont'd)

Alan Fletcher



Christmas tree in progress. I made the colored ornaments by filling straws with different colored resin and then sliced them on the bandsaw. This was a Rockler project.



My attempt at making a Crystal Cave vase I found on YouTube but it was unsuccessful due to the extreme depth and my non-functional homemade 9" tool rest that had too much vibration due to the limitation of my 5/8" tool rest slot. Now that I am a member of this great resource, perhaps I'll get help to resurrect this one.







## Instant Gallery (cont'd)

**Bill Campbell**



2 ironwood pieces, 3"x5" calabash  
and 3"x8" bowl.

A red maple bowl, 10"x5".  
All are finished with  
Mahoney's walnut oil





## Instant Gallery (cont'd)

Dan Ernst



Cindy Drozda inspired waterfall bowl, black ash burl, African blackwood pedestal and finial, dyed and finished with Osmo top oil





## Instant Gallery (cont'd)

**Dan Ernst**



Natural Edge cherry burl, Osmo top oil







## Instant Gallery (cont'd)

## Warren Gerber



I found a way to enhance a pretty average looking basswood bowl, thanks to my sister who lives in Cyrus, Minnesota. Her friend, Carol Braaten, is a rosemaling artist from Farwell, Minnesota, a town with a population of 50 people located near Cyrus.

Rosemaling is a type of decorative painting on wood. Norwegian rosemaling is usually painted on wood while the Swedish Dalmalning is created on canvas. I had a wooden bowl, so I went with the Norwegian for this project.

In Norway there is a specific rosemaling style for each region of the country. Telemark is the most common style with an asymmetrical design with a root center. The scrolls come from this root while flowers and leaves of different sizes and colors branch off from that base design. The second most common painted type is Rogaland. This bowl is painted in the Rogaland style. The style is very symmetrical where each side is a mirror image of the other.





## Instant Gallery (cont'd)

Jay Schulz



I turned a few more Epoxy and burl ornaments. I may actually be getting the hang of this. To make them "see-through" I have been adding a flood coat of epoxy to the inside of the hollow globes after sanding.



Both hollow ornaments are 2" globes of epoxy with either green or orange tint and mica flecks and imbedded mappa burl. The green ornament has a silver Celtic knot charm and gaboony ebony cap and finial finished with shellac. The orange ornament has a gold wire spiral with an amethyst crystal and it has a walnut cap and finial finished with walnut oil.





# Instant Gallery (at the meeting)



**Dan Ernst**



River birch



River birch with red milk paint



Hickory burl







# Instant Gallery (at the meeting cont'd)

**Steve Clark**



Maple

**Jay Schulz**



Ebony burl, epoxy

See p. 19



Walnut burl, epoxy





## Before the Demo



Bill Brackon



David Skjelbostad



Gary Eddy



Mike Hunter, Linda Ferber,  
Julie Abbott



Jeff Luedloff managing  
the front table



John Enstrom &  
Stephan Bossert



Mike Edwards



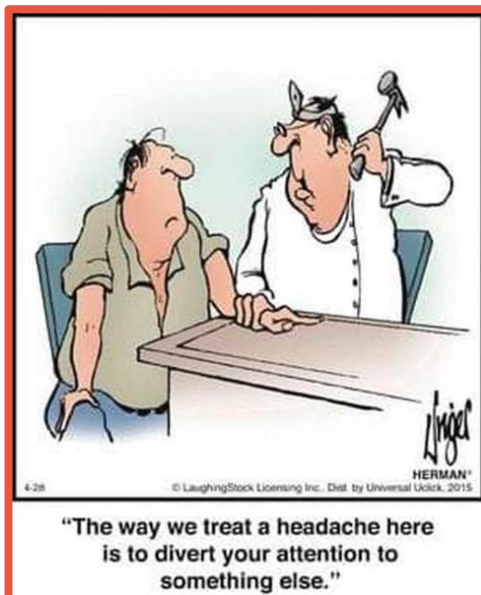
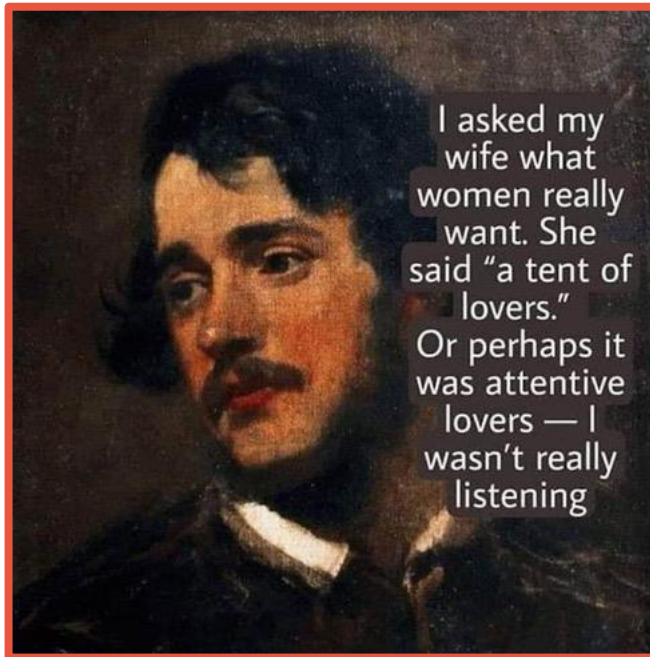
Scott Thomas



Sid Buxton











# December Demonstration

## Linda Ferber **EMBELLISHING**



Pres. Lee Luebke  
introduces Linda

As a culmination of the 3-month Member Ornament Challenge, Linda gave a demonstration of embellishing techniques for using on the ornaments

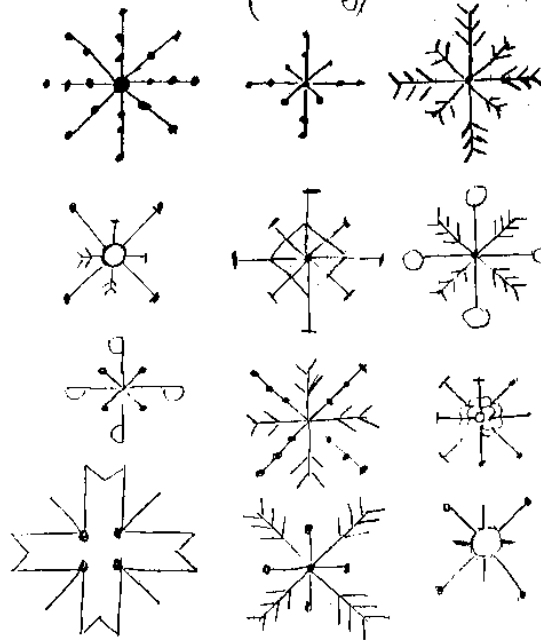




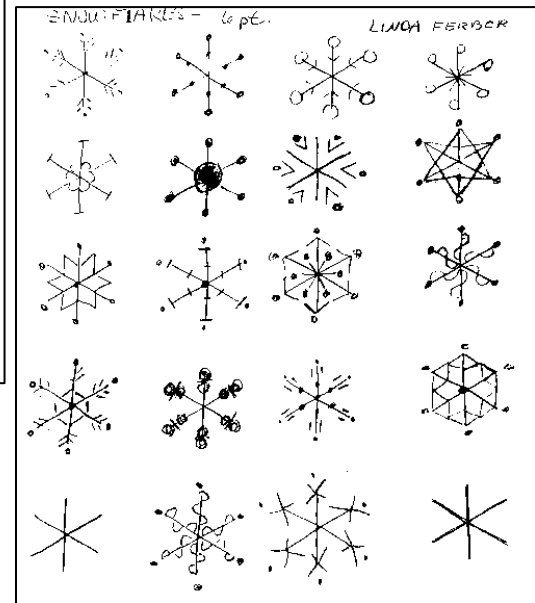
Linda divided her demo into 3 parts, woodburning, texturing and painting



Snowflakes (Whimsy) Linda Ferber



Linda showed how before using the woodburning instruments she would always have her design completed so she could draw it in very soft pencil on the wood, so there would be no indentation. She began with 6-pointed snowflakes.





## MWA November Demo (cont'd)

Linda Ferber– **EMBELLISHING**



Mark Debe & David Struck

With the 4 screens in the meeting room, the in-person participants and the folks watching at home on-line see exactly the same thing





# MWA November Demo (cont'd)

Linda Ferber— **EMBELLISHING**



Linda answered many questions and explained the differences in the available woodburning equipment, carving tools, paint and brushes

3 tables were set up for hands-on practice of the techniques demonstrated by Linda

Matt Wilke taking in the details of the embellishment techniques

Linda emphasized throughout her demonstration the necessity of attention to detail and preparation. She emphasized that care needed to be taken at each step because the turner had already invested so much time in the fabrication of the piece that it would be terrible to damage the piece during embellishment.

The details of the demonstration can only be appreciated and understood by watching the recording of the entire demonstration with all the close-up photography and detailed explanations while using the materials and instruments. Details of how to see the demonstration are given on the next page.



Linda is showing Don Pohlman some carving techniques with the Dremel tool

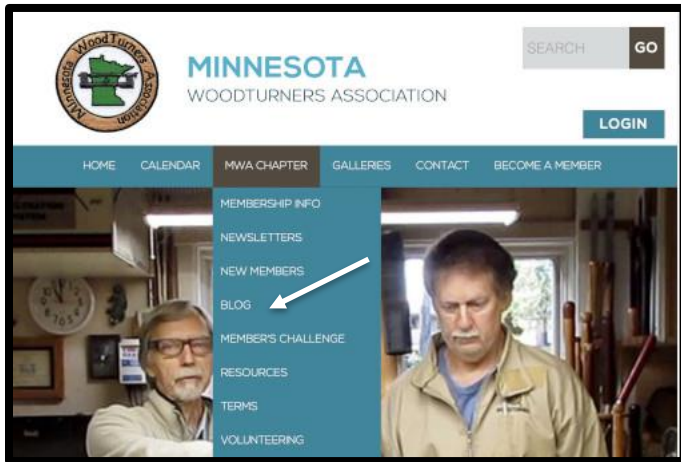


# MWA November Demo (cont'd)

Linda Ferber– **EMBELLISHING**

Thank you so much, Linda

Linda's demo is available on the MWA's website under the blogs



On the Home Page, click on Blog. If this page does not show up, go to:

<https://www.mnwoodturners.com/mwa-chapter/blog/>

## BLOG

*Check out the 2020-2021 and other Archives. We have our Tuesday Turners Tune Up demos posted.*

Navigating through the Blog you will find helpful information like how to build a log processing

## ARCHIVE

- 2022
- 2021
- 2020
- 2019
- 2017
- 2016

Go to 2022 Blogs and scroll to the bottom and click

Turn it Square with Steve McLoon

Turn Ornament Globe with Mike Hunter

Finials and Icicals with Jeff Luedloff

Linda Ferber ornament embellishments

Click on the link to the YouTube video of the demo





## MWA JANUARY MEETING

**January 7<sup>th</sup>, 2023 MWA Monthly Meeting**

**Demo starts at 9 am**

Houck Building

12811 16th Ave N Plymouth MN 55441

**In House Only with Phil Holtan\***

"Better Finish with Less Sanding on Bowls? Chasing the Ultimate Cut."  
**Phil will demo how to achieve better finishes with better cuts**

"My goal is to turn a better bowl with less sanding. I will show to and interact with the club in how to get the best cut possible. This involves sharpening well, shearing cuts, speed, tool angles, tool and body position, tool choice for bowl gouges and scrapers, including some attention to best cuts with carbide scrapers."

**\* Due to issues with OSHA, we are not able to Zoom the meeting. We anticipate that we can resume Zoom in Feb 2023.**

**Remember Jeff Koltveit from Woodcraft will be at the meeting**  
**You can call in an order & Jeff will bring it to the meeting**







## FUTURE MONTHLY MEETINGS

**We anticipate that we can resume Zoom in Feb 2023.**

**Feb 4<sup>th</sup> - Dan Larson**

**March 4<sup>th</sup> - Rick Auge**

**12811 16th Ave N Plymouth MN 55441**

## FUTURE MEMBER CHALLENGES

**To work on in January – Bring to the February Meeting**  
**PENS**

**To work on in February – Bring to the March Meeting**  
**A Bowl From A Board**

**To work on in March – Bring to the April Meeting**  
**Turn A Platter**

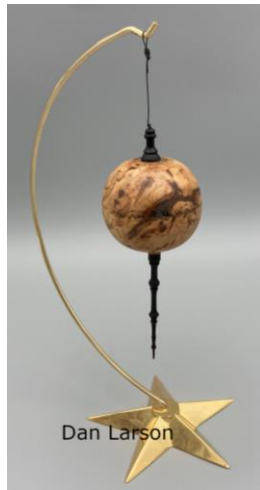


# Member Challenge – November/December



Karsjens

Brian Karsjens



Dan Larson

Dan Larson



Sid Buxton

Sid Buxton

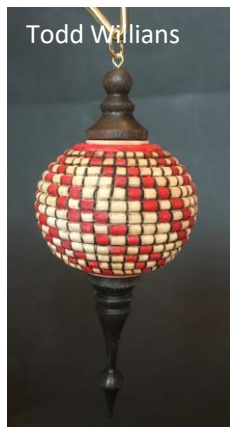


Todd Williams

Todd Williams



Todd Williams



Todd Williams

Todd Williams



Todd Williams



Mike Rohrer

Mike Rohrer



Mike Rohrer



Matthew Wilkie

Matthew Wilke



Ed Downey

Ed Downey

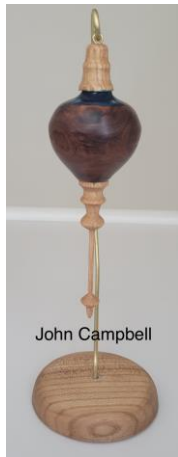


# Member Challenge – November/December (cont'd)



Linda Ferber

Linda Ferber



John Campbell

John Campbell



Mike Braml



Larry Thomas



Greg Just



Julie Abbott



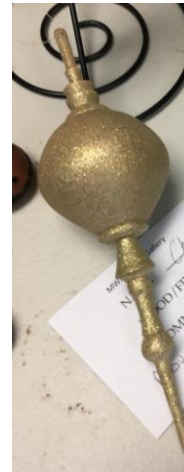
Don Pohlman



Ellen Starr



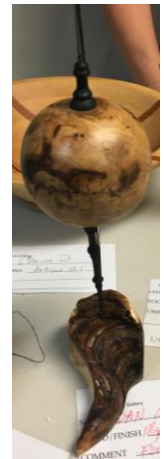
Sid Buxton



Charlie Prokop



Don Pohlman



Dan Larson





Member Challenge – November/December (cont'd)



Matt Wilkie



Danny Judd



David Brewer



John Suhreptz



John Suhreptz



John Suhreptz



Jay Schulz



## Member Challenge – November/December (cont'd)



Steve Legvold

**CONGRATULATIONS TO ALL THE ENTRANTS IN THE  
MEMBER ORNAMENT CHALLENGE**

**A SPECIAL CONGRATULATIONS TO MIKE HUNTER, JEFF  
LUEDLOFF AND LINDA FERBER FOR ORGANIZING THESE  
SESSIONS AND DOING SUCH A FANTASTIC JOB OF TEACHING US  
TO MAKE THE ORNAMENTS**



# Tips for Turners

**Alan Fletcher**



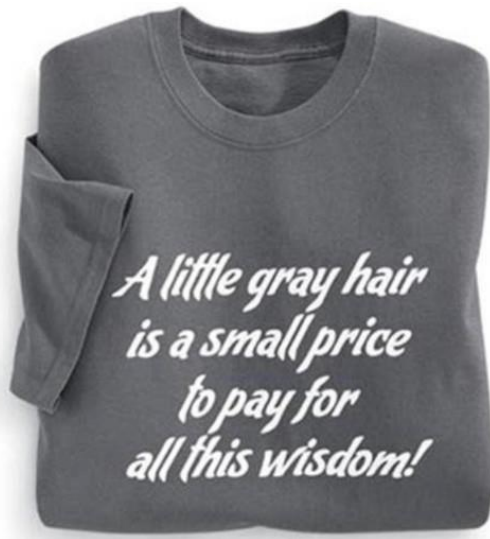
Another way of using Cole jaws. I used them to center the next ring to a salad bowl in progress. Because the ring was 11.25" in diameter, I couldn't grip it from either the inside or the outside so I screwed the Cole jaws to it in a portion of the ring that I knew would be cut away once it was on the lathe.







I went to the grocery store and they now have a parking spot for Fat guys that like to grill. That's so considerate.



I'm disappointed when  
a liar's pants don't  
actually catch on fire



## New Members November 2022

Welcome all new members and we all look forward to getting together face to face and meeting you soon

Randall Tlachac

Plymouth

Patricia Cordano

Minneapolis

Michael Jankowski

Burnsville



## Spike's Keg of Nails and 'Nowledge

In the strange competitive world of lumberjack competitions, perhaps the strangest contest of all is the open modified chainsaw event – the event those in the know simply call the “hot saw.” The engines are modified snowmobile and motocross engines, with 50-60 horsepower, running anywhere from 10,000 to 12,000 rpms. The only three regulations are these: 1) they're single cylinder, 2) they hold their own fuel and oil, and 3) they're pull started. These unworldly-looking monsters are -without exaggeration- the loudest thing I've ever heard.

There is a fear that as we reduce wood into smaller and smaller components we also reduce our emotional attachment to the structures and our sense of place.

Crosscut saw competition is an exceedingly expensive sport. A good two-man crosscut saw costs \$2,000. Only three crosscut saw makers are left in the world today. When I asked how a lumberjack from the old days might fare in today's competitions, I found that there isn't a standard chainsaw that can cut through an 18-inch round of white pine as fast as a crosscut saw. The fastest time for a stock chainsaw is 15.4 seconds; for a one-man crosscut saw, it's 10.3.

Our houses breathe. In fact, my 155-year-old house hyperventilates. Old houses may go through fifty to seventy complete air exchanges in a day, while a new, tightly sealed home may have just one. Both numbers are far from perfect. Fifty air exchanges per day means you're heating fifty houses' worth of air each day in order to keep one house warm. But only one air exchange can be worse. It means that all the moisture generated inside from a family of four on any given day – from showers (1/2 pound), cooking and dishwashing (3 pounds), watering plants (3-5 pounds), or simply living and breathing (12 pounds) – stays inside. Plus, other moisture generated and you've got a rotten problem to solve.

From: A Splintered History of Wood, c.2008, by Spike Carlsen, published by Harper Collins  
Spike lives in Stillwater, MN





# Area & Regional Meetings

## Hamburger Club

The Hamburger Club met at Big Louie's Restaurant on December 15. The heavy snow discouraged a large number of attendees.



If you would like to be added to the announcement list, email Mike Hunter.  
[huntertoolsystems@gmail.com](mailto:huntertoolsystems@gmail.com)



## Area & Regional Meetings (cont'd)

### NE Metro



The NE Metro Sub-Group has been re-formed after a hiatus due to Covid. 14 people were in attendance (but this is the only picture we got from the meeting).

Greg Just and Tim Rystrom comparing left thumb injuries

**SE Metro** did not meet in December and will reconvene in January





Dick Hicks & Jeff Luedloff found this burl laden tree and made an offer, purchasing the ENTIRE tree



Stanza 4 from the poem:

## Knot Work / Not Work / Knot Hole / Not Whole: A Mapping

By Lee Ann Roripaugh

Burl's the wood that's formed when a tree becomes stressed or sick, causing the grain to arabesque

and warp into strange spirals, distorted forms, eye-spotted with visible knots. Burl erupts when infestations

of insects or mold spread unchecked beneath bark's façade, the burl becoming larger more ornate,

as the tree continues to grow. Easy to dismiss as tumors, or eyesores, burl's actually incredibly rare, very expensive.

A tree's not whole without its burl and if someone tries to cut burl from a tree while the tree's alive, the tree will die.







Yikes! It just plain blew apart. Whoa!  
12" bowl of buckthorn, koa and spalted maple



**\$29.99** ~~\$55.36~~

**DENTURE DRILL BIT HOLDER**

Definitely catches the eye of a dentist/turner

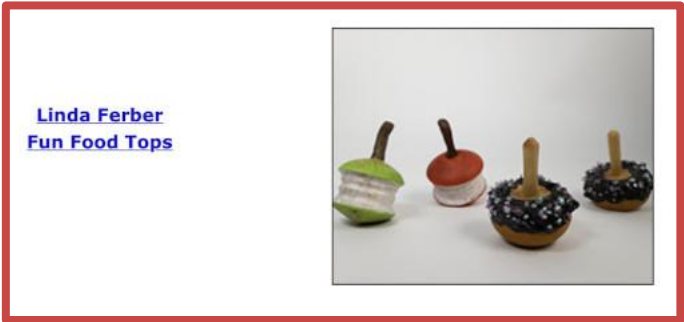
Michael D. Rohrer, D.D.S., M.S.

Continued on next page





Congratulations, Linda & Steve



# GALLERIES

JAN 13 | FEB 19

Steve Miller  
**Nature's Natural Beauty**  
Turned Wood

The Phipps Center for the Arts at The Phipps Center for the Arts, Hudson WI



Steve Miller

Continued on next page







## Be careful in your shop! A recent article

A Louisiana pastor was found dead on Tuesday morning after being injured in a "tragic accident," according to church officials.

Rev. Jimmy Jeanfreau Jr., the pastor of Immaculate Conception Roman Catholic Church in Marrero, was killed in a woodworking accident at a carpentry workshop on the church's campus, according to NOLA.com and Fox affiliate WVUE-DT.

The Jefferson Parish Coroner's Office said that Jeanfreau, 60, is suspected to have died at some point on Monday night after sustaining traumatic injuries while using a lathe, a stationary tool used to shape wood, reported NOLA.com.

We may never know what exactly happened. I'm guessing he got hit in the head by the wood. Many lathes do not go slowly enough for starting a big chunk of wood. The other big mistake is not using the tail stock for maximum support. I know some lathes have a "swivel head" . . . these would seem very dangerous to me since the tail stock cannot be used. OR . . . he was trying to rough a bowl blank with the spindle roughing gouge. He will never enjoy turning again.

Jim Jacobs





## WOOD SEALER

At this time sealer is available at the monthly meetings and from:

Charlie Prokop, Woodbury, MN [charlieprokop@gmail.com](mailto:charlieprokop@gmail.com)

Julie Abbott, Eden Prairie, MN, [JulieAbbott@EdinaRealty.com](mailto:JulieAbbott@EdinaRealty.com)

Bob Meyer, Lino Lake, MN, [rjmbobco@comcast.net](mailto:rjmbobco@comcast.net)

Steve Mages, Minnetonka, [smages@juno.com](mailto:smages@juno.com)

Paul Laes, Cottage Grove, [Woodforfun@hotmail.com](mailto:Woodforfun@hotmail.com)



I am looking for others to sell sealer throughout the metro area.

Bring plastic jugs if you have them.

Sealer \$20.00 gallon.

We need heavy duty plastic jugs for dispensing sealer. If you have any gallon containers, we could sure use them. It would be best if you could bring your empty containers to be filled.

The club now has a chip card reader so you can pay Charlie by credit card or cash.

Anyone wanting to sell sealer can buy a quantity from me if you like or take some gallons and sell them to members and send the money to Treasurer Mark Debe.

Charlie Prokop, President MWA





Please send items for the Bulletin Board to: [mdrprof@gmail.com](mailto:mdrprof@gmail.com)

As a group which has a common hobby but also is a group of good friends, we'd like to keep up with our friends and hear about awards, shows, family news (weddings, accomplishments of children and grandchildren), retirements, hospital stays, illnesses, book recommendations, website recommendations and anything else you would normally talk about in person at MWA or Sub-Group meetings. All of these and more are possibilities for the Bulletin Board. We're not seeing all our MWA friends face-to-face monthly, but we still need to stay in touch.





## Lathe Contact List

The MWA Newsletter is presenting a list of members who would be happy to give you pros & cons and experiences with the lathes they own or with which they have had experience.

This list is being updated every week as more members are contacting me saying they'd be happy to be listed. If you would be willing to have your name and email address listed under the type of lathe(s) you have, please contact me .

<u>LATHE</u>	<u>Member</u>	<u>Email address</u>
Bonnie Klein Mini	Bill Szydlo	<a href="mailto:szydlo.bill@gmail.com">szydlo.bill@gmail.com</a>
Bonnie Klein Mini 12x18	Linda Ferber	<a href="mailto:lindajaneferber@gmail.com">lindajaneferber@gmail.com</a>
Craftsman Professional	Steve Mages	<a href="mailto:smages@juno.com">smages@juno.com</a>
Delta mid size 12"	Randall Thompson	<a href="mailto:thomp013@umn.edu">thomp013@umn.edu</a>
Delta mid size 12"	Dan Larson	<a href="mailto:dhjlar@comcast.net">dhjlar@comcast.net</a>
Delta midi	Bob Meyer	<a href="mailto:rjmbobco@comcast.net">rjmbobco@comcast.net</a>
Delta midi	Joe Zwirn	<a href="mailto:joezathome@msn.com">joezathome@msn.com</a>
Grizzley G 0733	Martin Young	<a href="mailto:martin.clay.young@gmail.com">martin.clay.young@gmail.com</a>
Harbor Freight(Central Machinery 10x18)	Rusty Ogren	<a href="mailto:rick.Ogren@consolidated.com">rick.Ogren@consolidated.com</a>
Jet 1015	James Zangl	<a href="mailto:james.zangl@gmail.com">james.zangl@gmail.com</a>
Jet 12/21	Lee Luebke	<a href="mailto:lguebke@comcast.net">lguebke@comcast.net</a>
Jet 14x42	Rusty Ogren	<a href="mailto:Rick.Ogren@consolidated.com">Rick.Ogren@consolidated.com</a>
Jet 1640	Joe Zwirn	<a href="mailto:joezathome@msn.com">joezathome@msn.com</a>
Jet 1642 EVS	Jenny Trice	<a href="mailto:jennytrice@aol.com">jennytrice@aol.com</a>
Jet 1642 1.5 hp	Greg Just	<a href="mailto:woodturner07@gmail.com">woodturner07@gmail.com</a>
Jet JML 10/14 Mini	Neil Robinette	<a href="mailto:northsideturners41@gmail.com">northsideturners41@gmail.com</a>
Jet JWL - 1220VS	John Campbell	<a href="mailto:campbell.jn@gmail.com">campbell.jn@gmail.com</a>
Laguna 12/16	Lee Luebke	<a href="mailto:lguebke@comcast.net">lguebke@comcast.net</a>
Laguna 18/36	Jay Schulz	<a href="mailto:jfschulz@comcast.net">jfschulz@comcast.net</a>
Laguna 18/36	Dan Larson	<a href="mailto:dhjlar@comcast.net">dhjlar@comcast.net</a>
Laguna 18/36	Lee Luebke	<a href="mailto:lguebke@comcast.net">lguebke@comcast.net</a>
Laguna 18/36	Mike Lucido	<a href="mailto:mike.s.lucido@gmail.com">mike.s.lucido@gmail.com</a>
Laguna Revo 18/36 220v	John Campbell	<a href="mailto:campbell.jn@gmail.com">campbell.jn@gmail.com</a>
Laguna Revo 18/36 220v	Neil Robinette	<a href="mailto:northsideturners41@gmail.com">northsideturners41@gmail.com</a>



# Lathe Contact List (cont'd)

NOVA 3000	James Zangl	<a href="mailto:james.zangl@gmail.com">james.zangl@gmail.com</a>
Nova Comet II	Rolf Krogstad	<a href="mailto:rolf.krogstad@gmail.com">rolf.krogstad@gmail.com</a>
Nova Comet II	Mike Anderson	<a href="mailto:manderson4700@comcast.net">manderson4700@comcast.net</a>
NOVA DVR 16"	Dan Larson	<a href="mailto:dhjar@comcast.net">dhjar@comcast.net</a>
NOVA DVR 16"	Joe Zwirn	<a href="mailto:joezathome@msn.com">joezathome@msn.com</a>
NOVA DVR XP	Bill Szydlo	<a href="mailto:szdlo.bill@gmail.com">szdlo.bill@gmail.com</a>
NOVA DVR XP 16"	Chuck Shreffler	<a href="mailto:cshreffler@outlook.com">cshreffler@outlook.com</a>
Oneway 2036	Dick Zawacki	<a href="mailto:dickzawacki@gmail.com">dickzawacki@gmail.com</a>
Powermatic 2014	Steve Legvold	<a href="mailto:stevelegvold@gmail.com">stevelegvold@gmail.com</a>
Powermatic 2520B	Steve Mages	<a href="mailto:smages@juno.com">smages@juno.com</a>
Powermatic 3520B	Todd Williams	<a href="mailto:toddwilli@comcast.net">toddwilli@comcast.net</a>
Powermatic 3520B	Steve McLoon	<a href="mailto:s.c.mcloon@gmail.com">s.c.mcloon@gmail.com</a>
Powermatic 3520C	Reid zimmerman	<a href="mailto:reidazimmerman@gmail.com">reidazimmerman@gmail.com</a>
Powermatic 3520C	Dan Ernst	<a href="mailto:piloto1@comcast.net">piloto1@comcast.net</a>
Powermatic 4224B	Dan Larson	<a href="mailto:dhjar@comcast.net">dhjar@comcast.net</a>
Powermatic 45	Todd Williams	<a href="mailto:toddwilli@comcast.net">toddwilli@comcast.net</a>
Record Power Coronet Herald 14 x 20	Gary Egbert	<a href="mailto:gtegbert@yahoo.com">gtegbert@yahoo.com</a>
Robust American Beauty	Tim Dodds	<a href="mailto:tbikefast@aol.com">tbikefast@aol.com</a>
Robust Liberty	Jim Jacobs	<a href="mailto:woodmanmn@aol.com">woodmanmn@aol.com</a>
Robust Liberty	Warren Gerber	<a href="mailto:xlwalleye@gmail.com">xlwalleye@gmail.com</a>
Robust Sweet 16	Linda Ferber	<a href="mailto:lindajaneferber@gmail.com">lindajaneferber@gmail.com</a>
Robust Sweet 16	Bob Meyer	<a href="mailto:rjmbobco@comcast.net">rjmbobco@comcast.net</a>
Shopsmith	Martin Young	<a href="mailto:martin.clay.young@gmail.com">martin.clay.young@gmail.com</a>
Shopsmith (restored)	Lee Luebke	<a href="mailto:lguebke@comcast.net">lguebke@comcast.net</a>
Vega 2600	Bill Szydlo	<a href="mailto:szdlo.bill@gmail.com">szdlo.bill@gmail.com</a>
Vicmarc VL 300	Lee Tourtelotte	<a href="mailto:leetourtelotte@icloud.com">leetourtelotte@icloud.com</a>



## Member Help Line

The club has organized a "Member Help Line", the purpose of which is to answer questions/give advice and help educate our membership. Even though it is more difficult during the Covid-19 social distancing time to help people in home workshops, there are still ways to help each other with woodturning questions/problems. The volunteers can help via email, telephone, Zoom, some personal contact using social distancing and masks, and probably other ways we haven't tried yet.

Maybe you're a beginner looking for advice on what to buy.

Maybe you have questions on chucking.

Maybe you have sharpening questions.

The volunteers listed on the next page are more than happy to help. Some have listed areas in which they feel more comfortable, but all will help with your woodturning question.

We would like more members to volunteer for our Member Help Line. If you would like to be "on call" please contact Mike Rohrer at [mdrprof@gmail.com](mailto:mdrprof@gmail.com) with your phone #, email address, area where you live, areas you'd be willing to help with, and your name will be added to the list.

Continued on next page





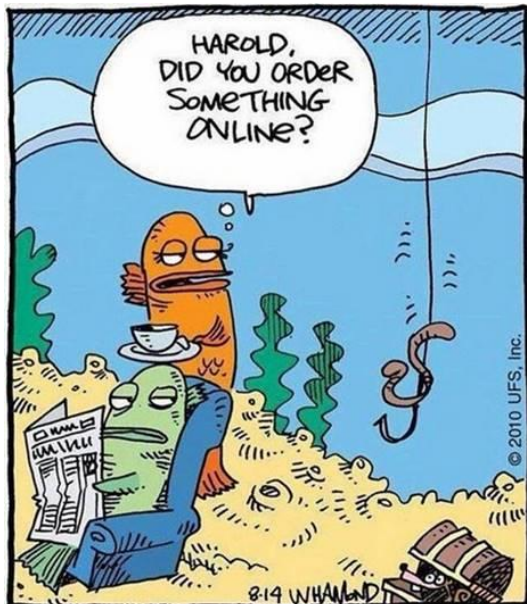
# Member Help Line

Mike Rohrer	612-276-9556	<a href="mailto:mdrprof@gmail.com">mdrprof@gmail.com</a>	bowls, boxes	South Mpls
Steve Miller	715 821-8726	<a href="mailto:ssmiller920@gmail.com">ssmiller920@gmail.com</a>	all types, light on segmenting	River Falls, WI
Lee Tourtelotte	612-670-1874	<a href="mailto:leetourtelotte@icloud.com">leetourtelotte@icloud.com</a>	all types, beginner, advanced	South Mpls
Warren Gerber	651 403 2883	<a href="mailto:xlwalleye@gmail.com">xlwalleye@gmail.com</a>	Bowls	Mendota Heights
Jim Jacobs	651-497-1309	<a href="mailto:woodmanmn@aol.com">woodmanmn@aol.com</a>	beginner/advanced, segmenting, skews	Hastings
Dick Zawacki	507-744-5748	<a href="mailto:dickzawacki@gmail.com">dickzawacki@gmail.com</a>	general, bowls, wood carving	Northfield
Mike Lucido	651-738-2551	<a href="mailto:mike.s.lucido@gmail.com">mike.s.lucido@gmail.com</a>	general woodturning	Woodbury
Bill Campbell	715-338-2634	<a href="mailto:wm.e.campbell@uwrf.edu">wm.e.campbell@uwrf.edu</a>	general woodturning	River Falls, WI
Mark Kelliher	651-636-8678	<a href="mailto:markandkathy007@comcast.net">markandkathy007@comcast.net</a>	general woodturning	Arden Hills
Todd Williams	651-274-4658	<a href="mailto:toddwilli@comcast.net">toddwilli@comcast.net</a>	general woodturning	Lake Elmo
Bob Meyer	651-483-6187	<a href="mailto:rjmbobco@comcast.net">rjmbobco@comcast.net</a>	bowls, ornaments, sharpening, gen'l.	Lino Lakes
Dick Hicks		<a href="mailto:rbhicks@rbhicks.com">rbhicks@rbhicks.com</a>	platters, spindle work, bowls	Zoom from shop
Steve Mages	952-544-5286	<a href="mailto:smages@juno.com">smages@juno.com</a>	general woodturning	Minnetonka
Neil Robinette	763-639-1085	<a href="mailto:northsideturners1@gmail.com">northsideturners1@gmail.com</a>	sharpening, tool control, turning vs budget	Brooklyn Park
Andy Levesque	651-769-4070 TEXT	<a href="mailto:andy.m.levesque@gmail.com">andy.m.levesque@gmail.com</a>	resin/epoxy casting, hybrid turning, vacuum stabilizing, CNC & laser engraving	Lindstrom
Rusty Ogren	612-990-4857	<a href="mailto:richardogren@protonmail.com">richardogren@protonmail.com</a>	resin questions, crack filling	Plymouth
Dan Ernst	651-280-7484	<a href="mailto:pilot01@comcast.com">pilot01@comcast.com</a>	coring, wing bowls, bowls, gen'l turning	Maplewood, St Paul
Bill Szydlo	651-206-5547	<a href="mailto:szydlo.bill@gmail.com">szydlo.bill@gmail.com</a>	segmenting, sharpening, gen'l turning	Northfield, MN
James Zangl	6541-645-4696	<a href="mailto:james.zangl@gmail.com">james.zangl@gmail.com</a>	bowls, hollow forms, vases, pens, etc	St Paul -Hamline area
Joe Zwirn	612-619-4793	<a href="mailto:joezathome@msn.com">joezathome@msn.com</a>	segmenting, general woodturning	Brooklyn Center
Mark Palma	612-991-7733	<a href="mailto:marksworkshop@gmail.com">marksworkshop@gmail.com</a>	finishing & color	Lanesboro



I told my wife I saw a  
deer on the way to  
work.

She said, "How do you  
know he was headed to  
work?"



## Editor's Notes



Happy New Year! We welcome our new president, Charlie Prokop, and are confident he and the Board and other officers will continue the outstanding activities, education and support of our love of woodturning.

If you are comfortable attending the monthly meetings, please join us at Houck Machine. Wearing a mask is certainly acceptable and welcome.

Bring your new turnings to the meetings for the Instant Gallery or you can email me pictures.

The entries for the Members' Monthly Challenge (pens) **MUST** be brought to the February meeting. Prizes (gift cards) will be awarded at the meeting.

I don't think any of us can read the thank you letter from Isaac's mom on page 5 for the Beads of Courage box without shedding a tear. Before he was 2, Isaac had 1000 beads! Each bead represents a procedure, some not so terrible, a blood draw, some extremely hard, a major biopsy. Please continue to make Beads of Courage boxes or bags and get them to Jay Schulz.

If you have any suggestions for the newsletter, please contact me.

Mike Rohrer, Editor  
[mdrprof@gmail.com](mailto:mdrprof@gmail.com)

