



# Minnesota WoodTurners Association

A LOCAL CHAPTER OF THE AMERICAN ASSOCIATION OF WOODTURNERS

**AAW** | AMERICAN ASSOCIATION  
OF WOODTURNERS

Volume 2022 November



November  
Demonstrator

*Jeff  
Luedloff*

**FINIALS**



# In This Issue

## Minnesota Woodturners Association

### BOARD MEMBERS

#### Officers

##### **PRESIDENT**

Charlie Prokop

##### **VICE PRESIDENT AND AAW REPRESENTATIVE & DEMONSTRATIONS**

Linda Ferber

##### **TREASURER**

Mark Debe

##### **RECORDING SECRETARY**

Julie Abbott

#### Directors

Dan Ernst

Janese Evans

Rosanne Gold

Dick Hicks – Class Coordinator

Reid Zimmerman **501c3 Coordinator**

##### **MEMBERSHIP DIRECTOR**

Ken Crea

##### **TECHNICAL SUPPORT**

Janese Evans

Dick Hicks

Dan Larson

Lee Luebke

##### **LIBRARY**

Steve Clark

##### **OTHER STAFF SUPPORT**

Bob Meyer, Janese Evans - Group Purchasing

Dan Larson - Class Coordinator

Mike Hunter – Professional Demonstrations

Paul Laes – Sales at Meetings

Mike Rohrer - Newsletter

New Officers	p. 3
Member Ornament Challenge	p. 4
November Meeting	
a. Pre-Meeting	
i. Beads of Courage	p. 6
ii. Instant Gallery	p. 10
iv. Before the Meeting	p. 21
b. Meeting	
i. Announcements	p. 24
ii. Main Presentation	
Jeff Luedloff	p. 25
c. After Meeting	
Wood in Parking lot	p. 35
Member Challenge-November	p. 37
Tips For Turners	p. 40
New Members	p. 41
What's On My Lathe?	p. 43
Ornament Class	p. 45
Spike's Keg of Nails	p. 46
Ask A Turner	p. 48
Area Group Meetings	p. 51
Bulletin Board	p. 62
Lathe Contact	p. 67
Member Help Line	p. 69
Editor's Notes	p. 72



## New Officers & Board Members



Charlie Prokop  
President



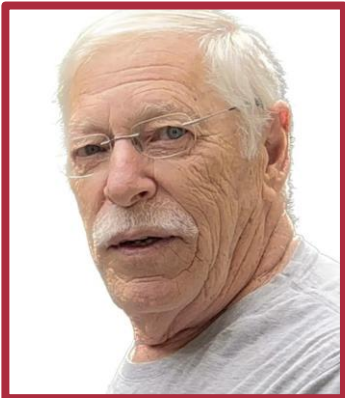
Linda Ferber  
Vice President



Mark Debe  
Treasurer



Julie Abbott  
Recording Secretary



Dan Ernst  
Director



Janese Evans  
Director



Rosanne Gold  
Director



Dick Hicks  
Director



Reid Zimmerman  
Director





# EXTRA EXTRA EXTRA-READ ALL ABOUT IT

## Minnesota Woodturners Ornament Challenges and Auction- 2022

- Participation challenge: Prize of Hunter gift certificate redeemable at Woodcraft
- Woodcraft Challenge: Prize of Woodcraft gift certificates
- MWA Ornament Auction: Proceeds to benefit the MWA chapter

## PARTICIPATION CHALLENGE

### HOW TO ENTER:

For Participation Challenge ornaments to be entered into the challenge need to be **SUBMITTED** via email by December 10<sup>th</sup>. Email: Mike Rohrer [mdrprof@gmail.com](mailto:mdrprof@gmail.com)

The email should include the following.

1. Photo labeled with turner's last name
2. Turner's first and last name. If it is a collaboration, all names (if a collaboration, the prize will be given to the person doing the entry to split with the team)
3. Category you would like to enter, either Advanced or Novice

### Prize:

A random drawing of all entries, Advanced and Novice will be held by December 12<sup>th</sup>. Winners will be announced via chapter email blast. **For Participation Challenge, the prize is a \$125 gift certificate redeemable at Woodcraft for a Hunter Tool of your choice.**

We would like to see as many of the ornaments as possible in person at the December meeting, but it is not a requirement for entry.

Continued on next page







## Minnesota Woodturners Ornament Challenges and Auction- 2022 (cont'd)

### Minnesota Woodturners Ornament Auction- 2022

At the December 3rd meeting there will be an ornament auction. The ornaments will be donated by MWA members and donations will be on display starting at the November meeting. Proceeds of the auction will benefit the chapter and be used to support our mission of education.

Bidding will start at the November meeting and conclude at the December meeting (online zoom bids as well as in person will be processed.) This is an excellent opportunity to support our chapter and a chance to take home a treasure made by a fellow turner or to shop for gifts.

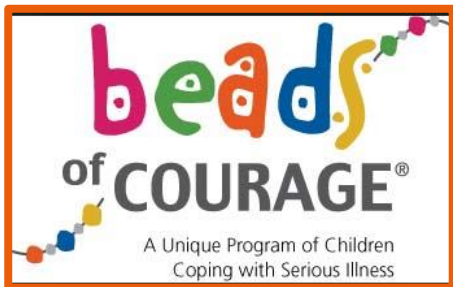
A slide show display of as many of the ornaments as possible will be created for a special edition of the MWA newsletter.

We are hoping for a huge turnout for this chapter ornament challenge and auction. Get in your shop and start turning!

*All members doing a newly turned globe and finial brought to the meeting or sending pictures to Mike Rohrer will be entered into a drawing for a **Mike Hunter Tools \$125.00 Gift Certificate**. Pictures to Mike Rohrer by **December 10th 2022**. I will draw a name after the 10th. **Thanks Mike Hunter for the Gift Certificate.***

Please start spreading the word – if questions, email Linda Ferber at [lindajaneferber@gmail.com](mailto:lindajaneferber@gmail.com)





Jay Schulz

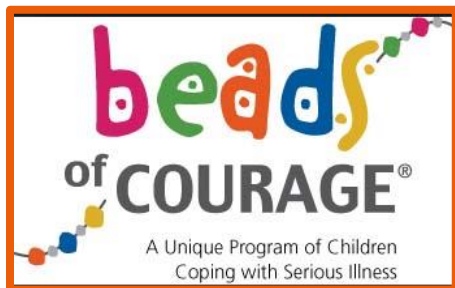


10 Beads of Courage Bags by Carol Olson



Beads of Courage Box by Sid Buxton. Oak with a walnut segmented ring.



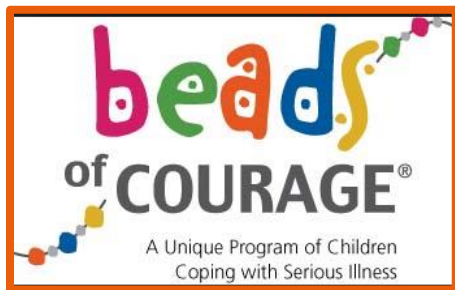


JoHannah Orman at the Erick Peter Person Oncology Center of Essentia Health (formerly known as St. Marys) in Duluth accepts 10 Beads of Courage boxes and 16 BoC bags

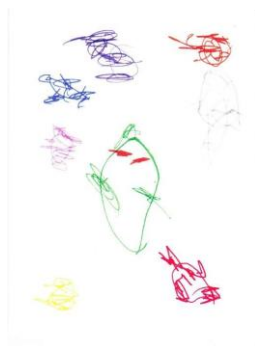


Cherry & spectacularly segmented box -- Greg Just IMG_0823	Oak, maple, cherry, pecan pieced stove box -- Anonymous IMG_8480 Box 012	Cherry, maple with epoxy, mahogany(?), alder, purpleheart segmented ring box -- Don Schlais #202 IMG_0790
Cherry, maple w epoxy, mahogany(?), purpleheart, segmented ring box #206 -- Don Schlais IMG_0791	Purpleheart, ambrosia maple, maple, stove box -- Anonymous, IMG_0836	Maple, walnut, oak, pieced stove box -- Anonymous IMG_8497
Walnut, Maple cherry, pieced stove box, Mike Rohrer, IMG_8675	Cherry with epoxy stove box, ? wood -- Anonymous, IMG_0837	Ash, birch, maple with epoxy, walnut, purpleheart segmented ring box -- Don Schlais #208 IMG_0787
Hickory, walnut, maple, stove box, Mike Rohrer, IMG_8709	BoC Bead Bags -- Cec Rohrer, Carol Olson, Diane P. & Rhonda S., Lorraine Hetherich IMG_0833	BoC Bead Bags -- Rhonda S & Diane Puetz IMG_0835





Thank you card from Parker, age 3,  
patient at Essentia Health Erick Peter Person Cancer Center



(cover)

Rhonda, Cec, Carol  
Diane and Lorraine -  
Thank you so much for  
your donation of Beads  
of Courage bags for our  
patients. They are all  
so adorable! Thank you  
for sharing your time  
and talents to help  
support our patients. Our  
patients are so  
fortunate to have caring

Parker drew:  
Green - Dr. Perko  
Orange - Jenny (Pediatric Nurse)  
Red - Julie (Dr. Perko's Office)  
Purple - Johannah (Child Life)  
Blue - Jess (Dr. Perko's Office)  
Pink - Bonnie (Pediatric CNL)  
Yellow - Jess (Dr. Perko's Office)  
Gray - Sarah (Child Life)

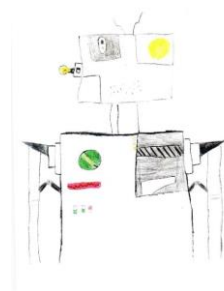
groups like you supporting  
them during their  
cancer journey.  
With Appreciation -  
The team at The Erick Peter  
Person Children's Cancer Center

Parker, Age 3 - Neuroblastoma Survivor  
Erick Peter Person Children's Cancer Center  
Essentia Health  
EssentiaHealth.org  
Printed by **ShelDon**

(inside)

(back)

Thank you card from Lane, age 12,  
patient at Essentia Health Erick Peter Person Cancer Center



(cover)

Dear AWH Members -  
Thank you for your  
recent donation of Beads  
of Courage boxes for our  
patients. Your talents  
continue to amaze us  
and our patients who  
love getting to choose which  
box they like best. Thank  
you for sharing your time  
and gifts to help bring

Joy to our patients.  
With Appreciation -  
The team at the  
Erick Peter Person  
Children's Cancer  
Center

Lane, Age 12 - Neuroblastoma Survivor  
Erick Peter Person Children's Cancer Center  
Essentia Health  
EssentiaHealth.org  
Printed by **ShelDon**

(inside)

(back)

Thank you notes



### **EXERCISE FOR PEOPLE OVER 60**

Begin by standing on a comfortable surface, where you have plenty of room at each side.

With a 5-lb potato bag in each hand, extend your arms straight out from your sides and hold them there as long as you can. Try to reach a full minute, and then relax.

Each day you'll find that you can hold this position for just a bit longer.

After a couple of weeks, move up to 10-lb potato bags. Then try 50-lb potato bags and eventually try to get to where you can lift a 100-lb potato bag in each hand and hold your arms straight for more than a full minute. (I'm at this level).

After you feel confident at that level, put a potato in each bag.

Thanks to Charlie Prokop





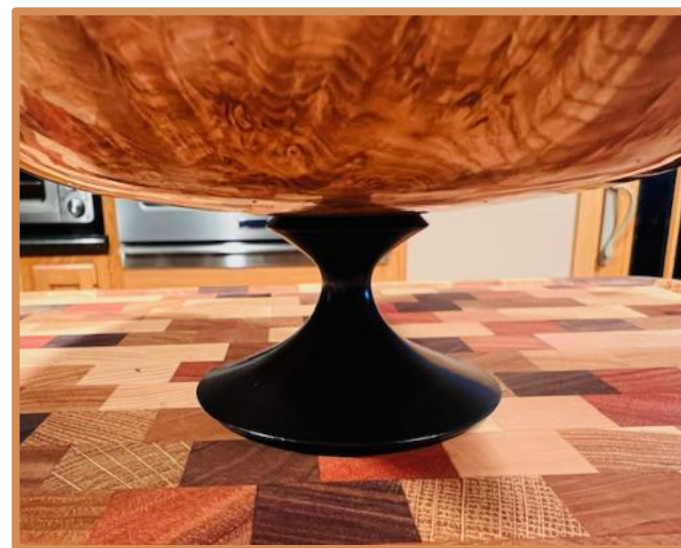


# Instant Gallery

**Dan Ernst**



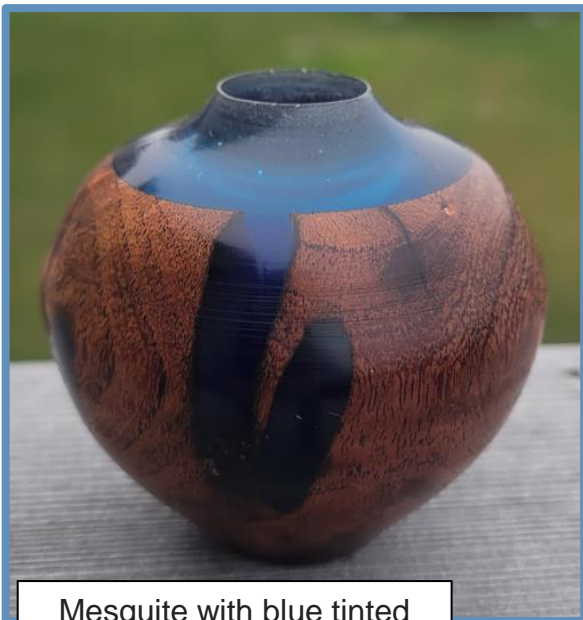
My burls are still talking to me.  
Here is my latest piece.  
9-1/2" Black Ash Burl with ebonized  
cherry pedestal





## Instant Gallery (cont'd)

**John Campbell**



Mesquite with blue tinted epoxy. Finished with homemade micro finish



Threaded box unknown wood, finished with high build friction polish.



Elm finished with Beale polishing system





## Instant Gallery (cont'd)

**John Campbell**



Ornament globe is mesquite & epoxy, 2 ¼" d. Hanger and icicle are oak. Icicle is 4 inches long and 1/8 inch in the thin portion.



Mesquite & epoxy, 2 ½" d, 1 ½" deep, made from wood left from making the globe. Finished with homemade micro polish.







## Instant Gallery (cont'd)

**Ken Hallberg**



Trident Tulip Bowl  
4 1/2" H. X 5 1/2" D.  
Maple, mahogany, bloodwood and Baltic birch





## Instant Gallery (cont'd)

**Mike Rohrer**



This was in the  
"What's On My Lathe"  
section in last month's  
newsletter



Mesquite was given to me by Jim  
Jacobs who says he never applies a  
finish to mesquite except wax because  
of the large amount of oil in the wood.

Mesquite "Square Bowl" after Steve McLoon. 5 3/4 " square x  
2 5/8" deep. The entire surface was finish sanded to 320  
before mounting on the lathe following Steve's directions.







# Instant Gallery (at the meeting)



**Byron Patterson**





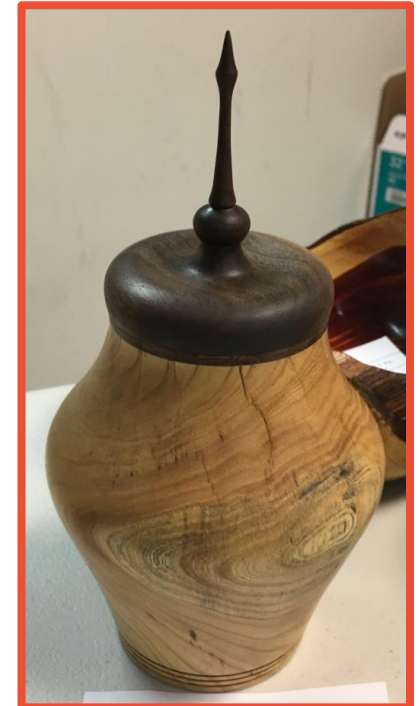
# Instant Gallery (at the meeting)

**Dan Larson**



Red boxelder

**Steve Clark**



Elm, walnut





# Instant Gallery (at the meeting)

**George Martin**



George brought a small tool he'd made for hollowing



**Charlie Prokop**



Apple and cherry flutes







# Instant Gallery (at the meeting)

**Mike Rohrer**



Red cedar  
Wipe-on poly

**Bill Breckon**



Olive  
Poly finish





# Instant Gallery (at the meeting)

**Greg Ford**



Boxelder  
Turquoise epoxy filler

**Linda Ferber**



Birch  
Acrylic paint







# Instant Gallery (at the meeting)

**Phil Holtan**



Ginkgo, cherry burl,  
spalted maple





# Before the Meeting



Jeff Koltveit representing Woodcraft. If you call and order ahead, Jeff will bring the item(s) to the meeting and you can pay and pick them up.



Mike Hunter & Bob Puetz. Wood is for sale with proceeds to the club.



Martin Young choosing a gourmet donut



Silent Auction



Sid Buxton enjoys a donut



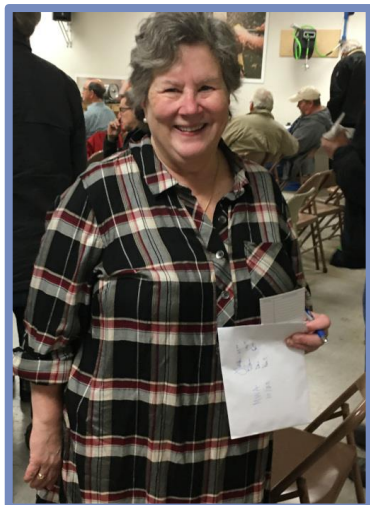
Judy Andrews and Jay Schulz discuss Beads of Courage







## Before the Meeting (cont'd)



Board Member, Janese Evans –  
managing Silent Auction



Linda Ferber &  
Dan Larson



Steve Clark managing  
the DVD library, a  
GREAT way to learn  
woodturning



For a very small fee you can  
take DVDs for a month





Not to brag, but I just went into another room and actually remembered why I went in there.

It was the bathroom, but still....



**The older you get the more you appreciate cancelled plans, early nights, thunderstorms and alcohol that is on sale.**



Thanks to Fred Schmoll





# Announcements

Janese Evans will bring small cut-out wooden sweaters to use for practice at the December 3<sup>rd</sup> MWA meeting. These will be used to practice the embellishment techniques Linda Ferber will teach at the meeting.

*All members doing a newly turned globe and finial brought to the meeting or sending pictures to Mike Rohrer will be entered into a drawing for a **Mike Hunter Tools \$125.00 Gift Certificate**. Pictures to Mike Rohrer by **December 10th 2022**. I will draw a name after the 10th. **Thanks Mike Hunter for the Gift Certificate.***







# November Demonstration



## Jeff Luedloff **FINIALS**

As part of the 3 sessions on globe ornaments, Jeff will show us how to do an icicle and a finial to complete the ornament





Pres. Lee Luebke announces the results of the election.

Our top-notch cameraman, Dan Larson, ensures that those attending and those watching at home will see the details of the meeting and the demonstration



The crowd is applauding the results of the MWA election



In-coming president, Charlie Prokop, enjoying a front row seat next to Lee Tourtelotte





## MWA November Demo (cont'd)

Jeff Luedloff– **FINIALS**



Pres. Lee Luebke introduces our demonstrator, Jeff Luedloff, to the in-person and zoom audiences



Ken Crea, membership chair, announces a new committee that will analyze the gains and losses in the membership







Linda Ferber discusses the Ornament Challenges and the format for the December meeting



Jeff begins by explaining his strategy when turning spindles. He considers finials to be very precise and very delicate spindles.

# MWA November Demo (cont'd)



Jeff begins with a spindle roughing gouge as one would do with any square blank that will become a spindle



Dan's camera work captures the details of Jeff's technique



Turning the very fine tip, Jeff emphasizes:

- 1) Start with a heavy enough blank that the small turned area will not wobble,
- 2) Turn from right to left, from the top to the bottom of the spindle/finial
- 3) Turn just a small area, sand to completion and **NEVER NEVER** touch this area again





# MWA November Demo (cont'd)



Jeff begins with a spindle roughing gouge as one would do with any square blank that will become a spindle



Dan's camera work captures the details of Jeff's technique



Turning the very fine tip, Jeff emphasizes:

- 1) Start with a heavy enough blank that the small turned area will not wobble,
- 2) Turn from right to left, from the top to the bottom of the spindle/finial
- 3) Turn just a small area, sand to completion and **NEVER NEVER** touch this area again

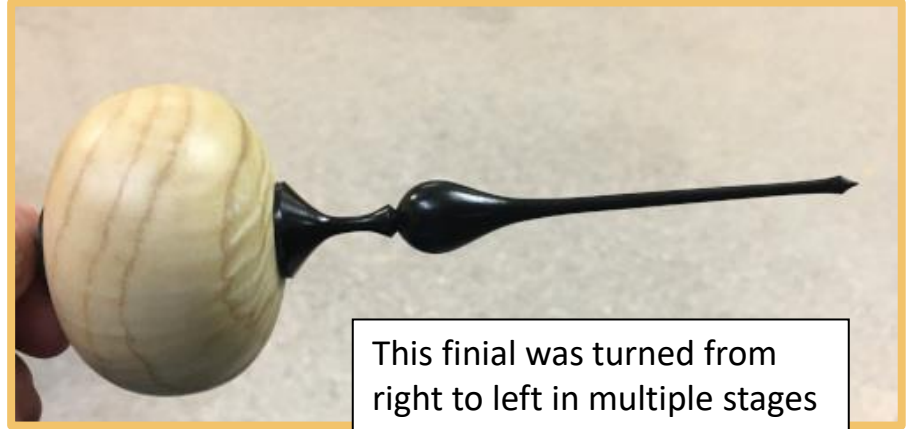




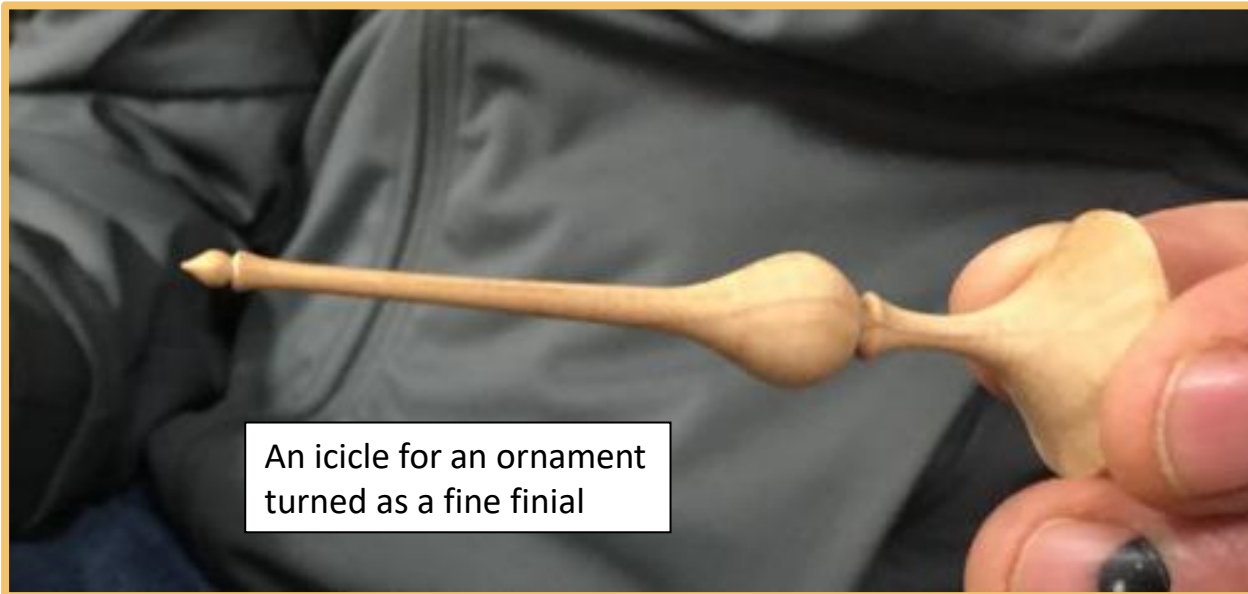
## MWA November Demo (cont'd)



An example of a fine tip with a thin shaft



This finial was turned from right to left in multiple stages that were completed and never touched a second time



An icicle for an ornament turned as a fine finial

## MWA November Demo (cont'd)



Jeff likes to use a mouth atomizer for staining finials

Following your demonstration, many of us were able to turn finials for the very first time of which we are very proud



Thank you, Jeff, for an excellent demonstration, well-organized, well-presented, well-explained.

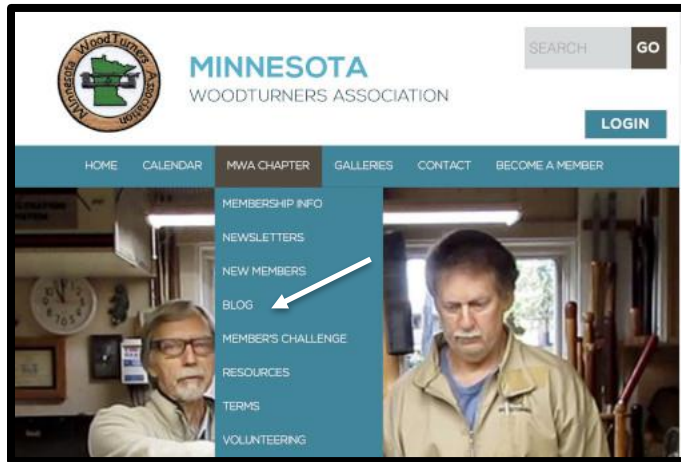


# MWA November Demo (cont'd)

Jeff Luedloff– **FINIALS**

Thank you so much, Jeff

Jeff's demo is available on the MWA's website under the blogs



On the Home Page,  
click on Blog

Turn it Square with  
Steve McLoon

Turn Ornament  
Globe with Mike  
Hunter

Finials and Icicals  
with Jeff Luedloff

Go to 2022 Blogs and scroll  
to the bottom and click

**FINIALS AND ICICALS WITH JEFF  
LUEDLOFF**

Posted: Nov 5th, 2022 9:00 am

**TOPIC: TURN FINIALS AND ICICLES.**

**ADD THESE TO YOUR GLOBE TURNED WITH  
MIKE HUNTERS DEMO TURNING GLOBES**

**LINK: [HTTPS://YOUTU.BE/I7SLXWYT5UK](https://youtu.be/i7SLXWYT5UK)**

Click on the link to the  
YouTube video of the demo







## MWA October Demo (cont'd)

### Monthly MWA Meetings

**FOR NOW, WE WILL CONTINUE DOING ZOOM DEMO PRESENTATIONS AS WELL  
AS IN-PERSON MEETINGS**

**MOST MEETINGS ARE SCHEDULED FOR THE FIRST SATURDAY OF THE MONTH  
AND WILL START AT 9:00 am.**

**December's Demo will be Embellishing**

**Linda Ferber**

**Saturday, December 3, 9:00 am**

**An email will be sent to all members with the log-on code for the Zoom**

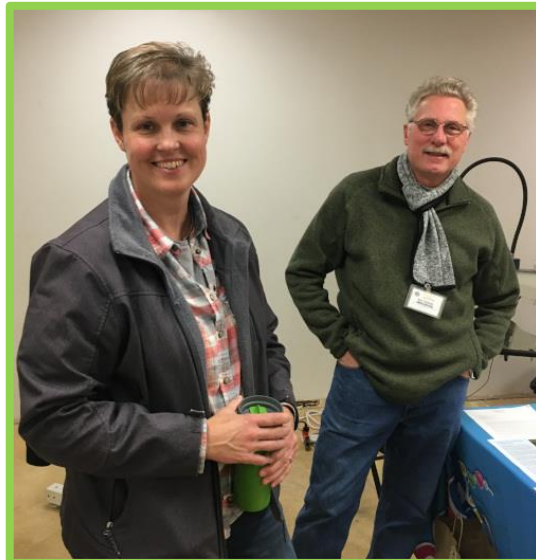




# After the Demo



New Recording Secretary,  
Julie Abbott & Beads of  
Courage Chair, Jay Schulz



Buying memberships





# Wood in the Parking Lot

At the pre-Covid meetings, an excellent collection of turning blanks was available and a drawing was held for the order in which members could choose their wood. From this point on, no drawing will be held; members are requested to make a donation to the MWA and then choose the wood they would like.



A reason to come to the meeting is the great deal you can get on turning blanks after the meeting





## Member Challenge – November/December

### **Participation Club Challenge for the months of October, November and December.**

In October watch Mike Hunter demo Turning an Ornament Globe then turn your globe(s) the rest of October. In November watch Jeff Luedloff on turning Finials and Icicles to fit Mike Hunter's globes. Then in the rest of November turn your finials and icicles to fit your globes. In December Linda Ferber will show us Embellishments on the Globes. At the December monthly meeting, members should bring your finished globes and finials to the meeting and you can embellish them right at the meeting. There will be a small fee to Linda for supplies. If you don't come to the meeting, you can email pictures of your ornament to [mdrprof@gmail.com](mailto:mdrprof@gmail.com). See p.3 for details

Mike Hunter will bring ornaments from Johnny Tolly, Dick Sing, Bob Rosand and Rebecca DeGroot to the December meeting.

All members doing a newly turned globe and finial brought to the December meeting or sending pictures to Mike Rohrer will be entered into a drawing for a **Mike Hunter Tools \$125.00 Gift Certificate**. Pictures to Mike Rohrer by December 10<sup>th</sup>. Pres. Lee Luebke will draw a name after the 10th. Thank you Mike Hunter for the Gift Certificate.

You can do more than one globe and finial but only one entry per person will be put in the drawing.



# Member Challenge – November/December



Karsjens

Brian Karsjens



Dan Larson

Dan Larson



Sid Buxton

Sid Buxton

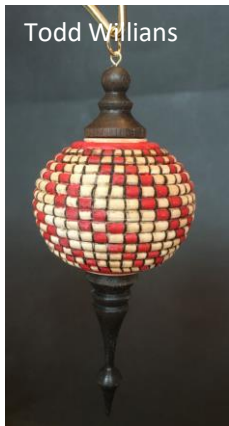


Todd Williams

Todd Williams



Todd Williams



Todd Williams

Todd Williams



Todd Williams



Mike Rohrer

Mike Rohrer



Mike Rohrer



Matthew Wilkie

Matthew Wilke



Ed Downey

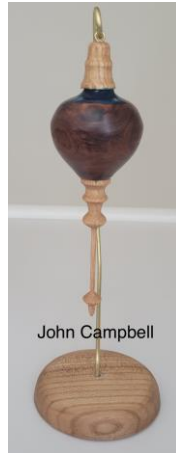
Ed Downey



## Member Challenge – November/December (cont'd)



Linda Ferber



John Campbell

If you want to enter the Member Ornament Challenge, send an image (with your name on it, if possible, see page 4) and if you are Advanced or Novice to [mdrprof@gmail.com](mailto:mdrprof@gmail.com) By December 10





# Tips for Turners

## **Tips from S.E. Metro meeting Friday November 18**

You walk away from these splinter meetings with pearls of wisdom.

1. Hide what you buy from your wife.
2. Don't talk to Jim (Jacobs) about lathes because you'll be spending way more than you need to.
3. Using your finger as a tool rest when you're using your negative rake scraper, nothing bad can happen.

*From Gary Eddy*



## New Members November 2022

Welcome all new members and we all look forward to getting together face to face and meeting you soon

April Leaveck

Travis Gast

Pat Halloran

Tom Parker

Michael Overstreet

Michael Edwards

David Berger

Alan Fletcher

Harry Troost

Scott Miller

James Weidenbach

Columbia Heights

Rogers

Wayzata

Monticello

St. Paul

Maple Grove

Elk River

Mahtomedi

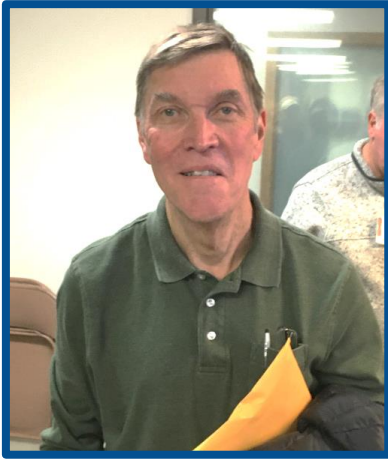
River Falls

St. Paul

Bloomington



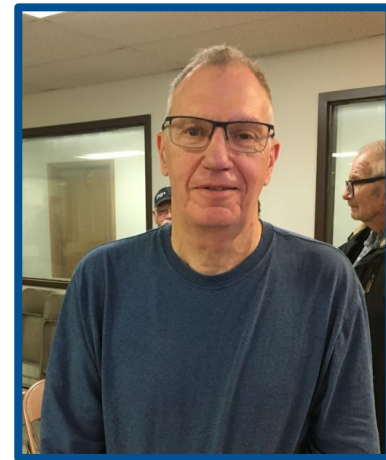
## New Members attending the November meeting



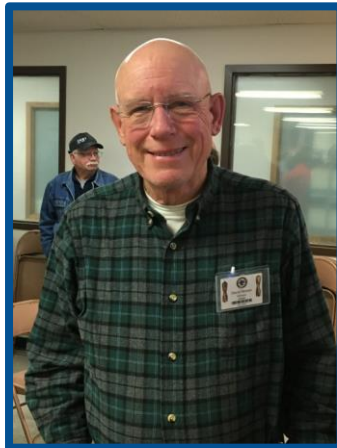
Kevin Demann



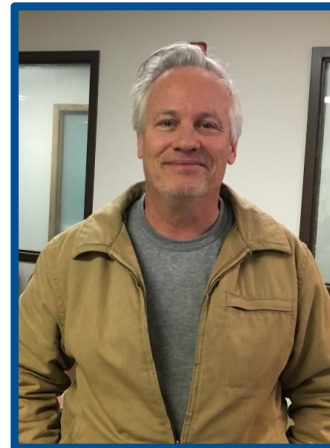
Travis Gast



Tom Rankin



David Brewer



Pat Halloran





# What's On My Lathe?

We have a new feature in our newsletter in which we're asking members to snap a picture of a work in progress (the key is "in progress") and send it to the editor so we can see pieces being actively created, rather than just seeing completed and "finished" work.

I found this bowl in the October AAW magazine. I tore out part of the page and took it to my shop

**Mike Rohrer**



# What's On My Lathe?(cont'd)

**Mike Rohrer**



Lee Tourtelotte gave me some nice fresh silver maple. I decided to split this crotch and make facing crotch wing bowls. This is the first half. I love the crotch grain in the bowl portion.



Please snap a picture of a work in progress on your lathe and send it to me. I doubt if I'm the only turner who has their phone in the shop.





# November 12 Ornament Class

Mike Hunter, Jeff Leudloff and Dick Hicks sharing their expertise for ornament turning





# Spike's Keg of Nails and 'Nowledge

In May 2006, a 17 ½ -ounce chunk of wood sold for \$3.54 million, putting its value at over \$202,000 per ounce. Of course, it helps that this particular chunk of wood, known as the Hammer violin, was crafted by a man with the last name of Stradivari.

Five basic woods – maple, yellow birch, sugar pine, poplar, and Sitka spruce – are used in every piano; more in custom made or limited-edition models. When a piano costs \$30,000 to \$90,000, you use only the best.

It's the soundboard's job to vibrate and transmit every note ranging from the lowest A to the highest C and all eighty-six notes in between. It is the soundboard – each with its own minute variations in how the wood was grown, dried, cut, glued, shaped, and eventually installed – that helps create each piano's unique voice. Unless the soundboard – the piano's amplifier – is made of the purest, straightest-grained Sitka spruce, everything else is just window dressing.

There are fifty-eight parts to each piano key: each needs to fit with the tolerances of a Ferrari valve job.

In northern Minnesota, hybrid poplar plantations are already in full swing. For optimum production per acre, the trees are planted, cared for, and harvested pretty much like giant cornstalks. Treated as a cash crop, the trees can grow to 60 feet in ten years, and poplar fields can yield up to six times as much wood per acre as natural forests. Trees can be planted on marginally productive cropland, and they prevent erosion to boot.

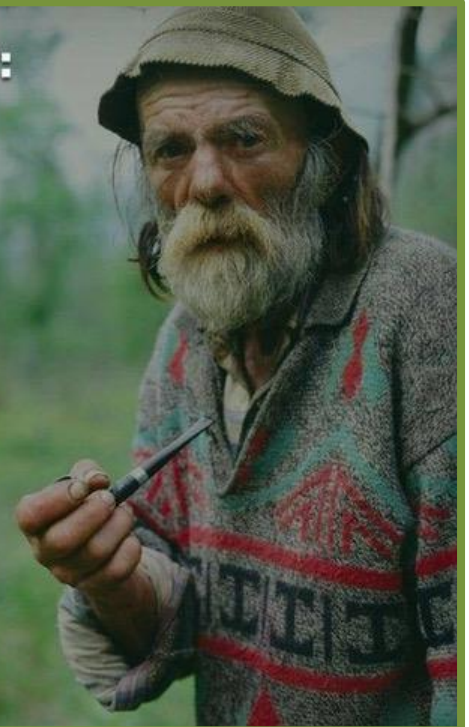
From: A Splintered History of Wood, c.2008, by Spike Carlsen, published by Harper Collins  
Spike lives in Stillwater, MN





### **SURVIVAL TIP:**

If you get lost  
in the woods  
start talking  
about politics  
and someone  
will show up  
to argue with  
you.



# Ask A Turner

FROM THE OCTOBER NEWSLETTER

I need some help. I've only turned a few pieces of fresh wood. I love it! It turns so easily, I love the large chips that come off the tools, the beautiful curves I seem to be able to get easier than with the very dry blanks. The problems I'm having:

- 1) when I don't have time to turn the bowl to completion in one day (which is what happens virtually every time), I come back to the bowl the next day and there are cracks in the end grain
- 2) when turning the inside of the bowl, the tenon that I make the same size as I do with dry wood cracks or breaks off.

I'm hoping for some suggestions.

Frustrated Turner

## Todd Williams answers Frustrated Turner

1. If you have to leave a partly cut object of green wood, coat all the surfaces, especially the end grain, with wax. Use 2 or 3 coats to slow the water release. You could also wrap the piece in plastic. But you must be aware of molding if left for very long.
2. The tenon made of green wood is more delicate than one of dried wood. Thus, no real magic, but use lighter cuts and nicely sharpened tools to minimize stress on the tenon. And don't squeeze the scroll chuck more than necessary to achieve a secure mount.





## Ask A Turner (cont'd)

### Dan Larson answers Frustrated Turner

Yes, although I love turning green wood, there are some things a turner must do to overcome the problems that can be associated turning a fresh blank. Basically, one must always try to slow the drying process down as you work with wet wood. Once you start turning, even if you take a long lunch break, you will want to put a plastic bag over the piece. If you leave it for a longer period, you could spritz the wood with water using a spray bottle and then put it in the plastic bag. You can also fill the plastic bag with chips from the piece you've just been turning, to further slow down the drying process and prevent cracking.

If you need to pause in your turning overnight, use the same process. However, it's best if you can complete the turning in one sitting because if you leave the wet turning in a bag for a few days, the wood will mold and you'll have to cut the mold away as you finish the bowl.

Another consideration is the tenon and wall thickness. As the wet wood dries, there can be a problem with uneven wall thickness especially at the bottom and the tenon. The thinner sides will dry faster than a thick bottom. The pressure from water in a thicker bottom will tend to crack the bowl. Whatever the thickness you're going for, try to keep every part of the bowl an even thickness. If you have finished the bowl, but haven't taken off the tenon yet, again put the bowl in a bag to prevent the possibility of cracking.



## Ask A Turner (cont'd)

Dan Larson

Also, with green wood, you could break the tenon off, usually because of a too small tenon, a poorly cut tenon or lots of pressure being applied by the chuck jaws. Size the tenon according to the size of your blank. Wet wood is heavier than dry wood so there is a lot more pressure on the tenon so a bigger tenon supports better. One can always reshape the bottom of the bowl when you reverse chuck the turning to take off the larger tenon and finalize the shape.

What I like to do, as soon as I'm finished turning, is put a finish on the bowl, even if the bowl seems wet. Many people feel uncomfortable with this. I like Minwax Antique Oil Finish. It is not too expensive and can be found in neighborhood hardware stores or big box stores. I also like Watco Butcher Block Oil & Finish. I think the oil in these finishes probably replaces the water slowly as the bowl dries. I also put the finished piece in a PAPER BAG, with the top open to continue to slow the drying process, just as an additional bit of insurance to prevent cracking.

Finally, be aware that depending on the species of wood and how wet it is when turned, your bowl will warp and change shape as it dries. This just adds to the organic appeal of a hand turned wooden bowl.

I hope these suggestions help you enjoy turning green wood as much as I do!



# Area & Regional Meetings

## Hamburger Club

The Hamburger Club met at the headquarters and gallery of the American Association of Woodturners, in Landmark Center, downtown St. Paul on Thursday, Nov. 17. Because of the situation of the tour through the gallery, the attendance was limited to the first 15 people to sign up.

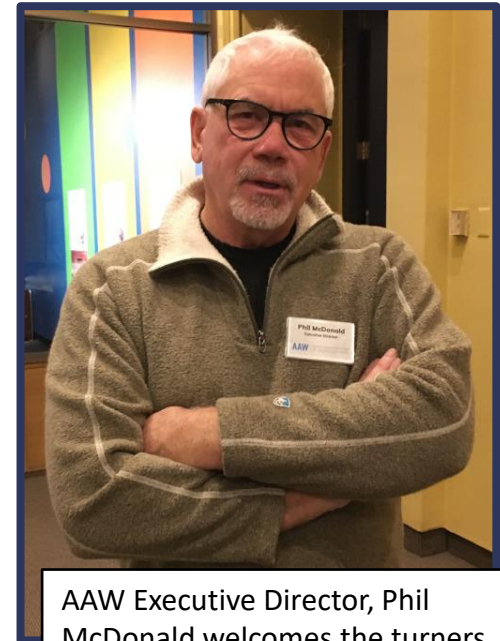
The meeting, as always organized by Mike Hunter, was absolutely outstanding. After lunch of sandwiches, chips and drinks, the group was welcomed by the AAW Executive Director, Phil McDonald. Phil introduced the AAW curator and arts administrator, Tib Shaw. Tib gave an in-depth tour of the gallery and AAW collection.



Dan Larson and AAW staff member, Alexa Calliguri



AAW staff Jen Newberg and Jane Charbonneau



AAW Executive Director, Phil McDonald welcomes the turners





## Area & Regional Meetings (cont'd)

## Hamburger Club



Tib had rearranged some of the displays to accommodate the group and to present a large display for our "Touch Tour" (That is extremely rare in a gallery!)

After washing our hands and learning some ground rules, we had the rare privilege of handling some incredible woodturnings



This large Norwegian great wheel lathe from the late 1700s had been lost overboard in a storm crossing the Atlantic. The owner was devastated, losing his livelihood. However, another ship following a short time later recovered it and reunited it with its owner.



Bob Puetz holding an antique bowl



Lee Tourtelotte holding a pedestal bowl, possibly Middle Eastern



## Area & Regional Meetings (cont'd)

## Hamburger Club



3 Mikes, Hunter, Kummer & Rohrer, enjoying the AAW gallery



1800s Swedish box with locking lid



"Rejects from the Bat Factory" Eccentric bats by artist Mark Sfirri. A set was recently acquired by the Baseball Hall of Fame.



Art From the Lathe  
Selections from the Permanent Collection of the American Association of Woodturners

Work by the late artist Frank Sudol. Display shows how his style progressed over time.

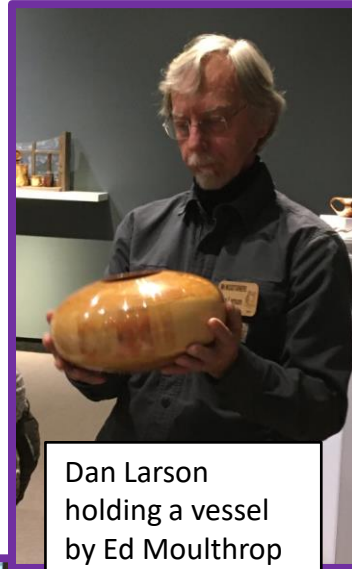
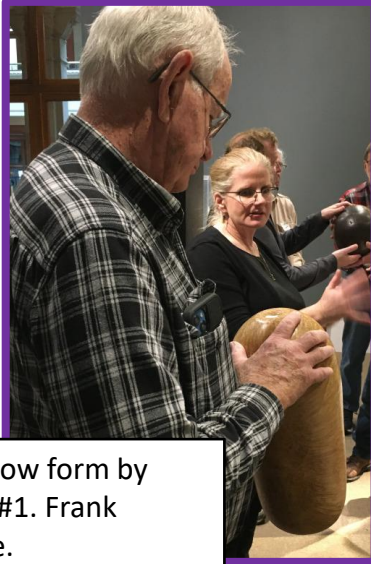




## Area & Regional Meetings (cont'd)



(Right) Jim Parker holding a hollow form by David Ellsworth, AAW member #1. Frank Sidol's first pierced piece, above.



Dan Larson holding a vessel by Ed Moulthrop



Bob Stocksdale, 'bird mouth' bowl. Stocksdale introduced this form to the field.



Tib and a koa bowl by Jack Straka



Betty Scarpino, *Undercurrents*, donated by Rhonda Fox Waltz & Kevin Waltz

## Hamburger Club



Some of the tops sent by turners around the world in honor of Linda Ferber's retirement from the AAW.



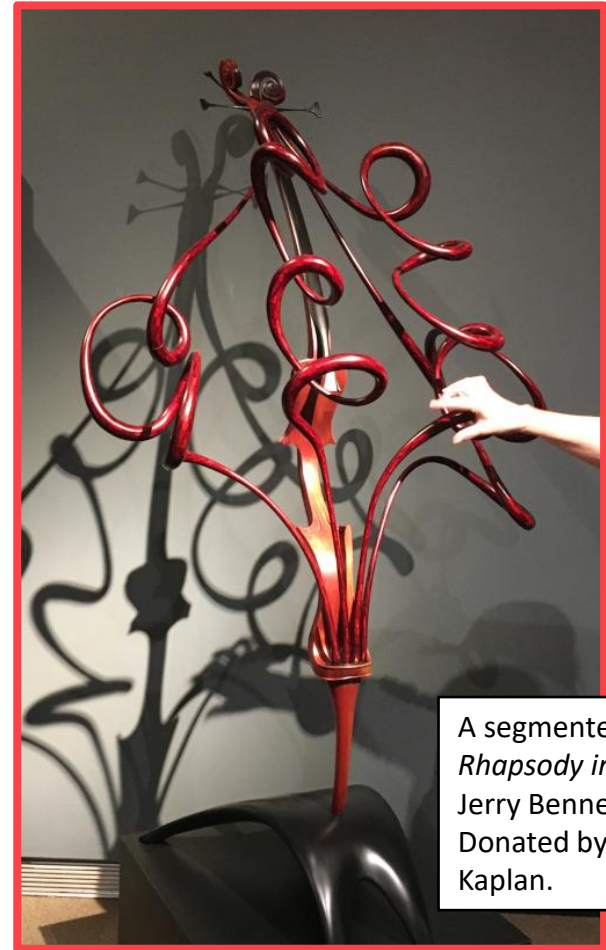


## Area & Regional Meetings (cont'd)

## Hamburger Club



Tib describing how materials and negative space were used by artists Bill Luce, Hans Weissflog, and William Hunter.

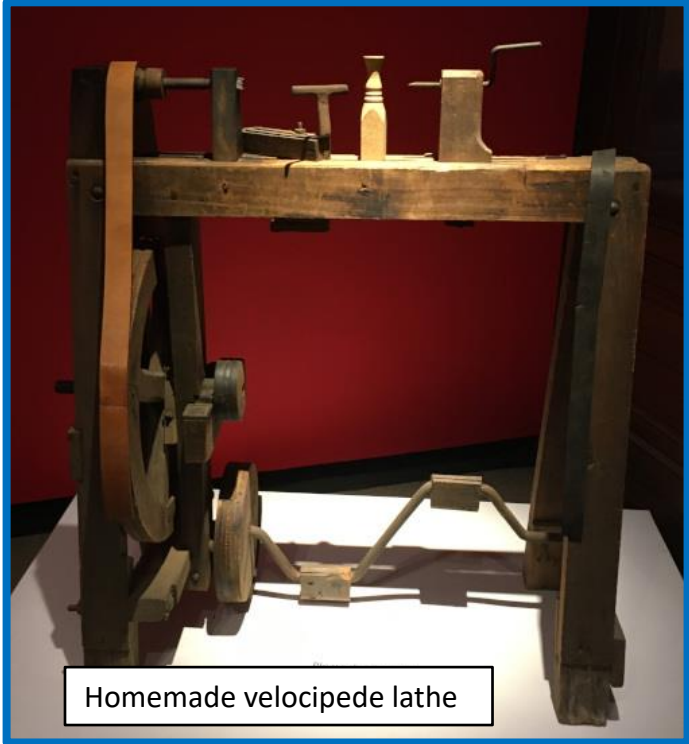


A segmented piece, *Rhapsody in Red*, by Jerry Bennett. Donated by Deena Kaplan.

Check out Jerry's excellent description of his work

<https://www.youtube.com/watch?v=KGiD27q2iRc>





Homemade velocipede lathe



Large, very old lathe, found under hay bales in northern MN.

Thanks to Mike Hunter, Tib Shaw and Phil McDonald for the opportunity to have this excellent experience.

American Association of Woodturners  
**GALLERY of WOOD ART**

If you have not visited the AAW headquarters and the Gallery of Wood Art in St. Paul, check out the details at:  
<https://www.facebook.com/aawwoodart>





**Did you know?**

**By replacing your potato chips  
with grapefruit as a snack  
you can lose up to 90%  
of what little joy you still  
have left in your life.**



© DEPOSITPHOTOS  
© BRIGHTSIDE





## Area & Regional Meetings (cont'd)

## SE Metro

The SE Metro group met on Friday, Nov. 18  
at the Green Mill Restaurant in Hastings



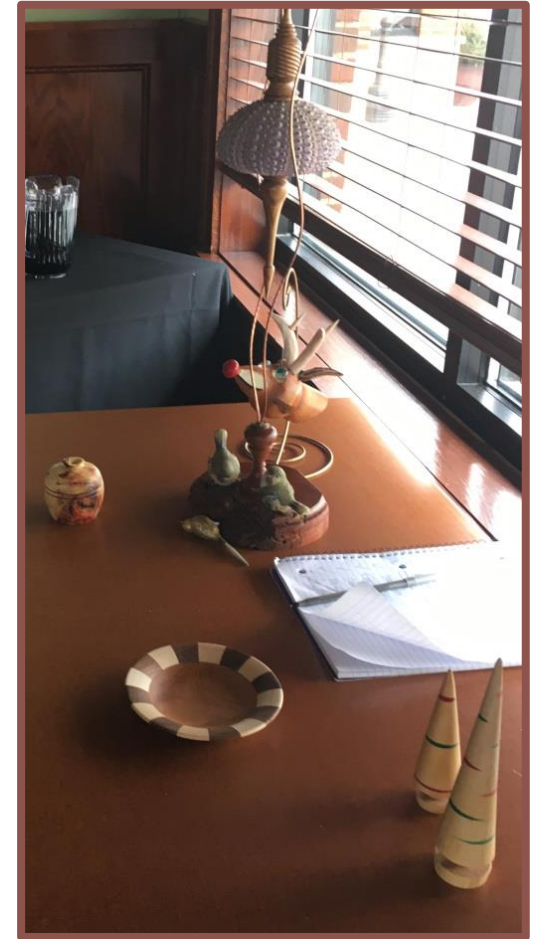
Most of the attendees



## Area & Regional Meetings (cont'd)

## SE Metro

### Instant Gallery



Jim Jacobs presents Outgoing President, Lee Luebke, with a 2" thick maple Thank You card





*Paraprosdokian* (pair-uh-prahz-DOHK-ee-in) is a figure of speech wherein a sentence or phrase takes an unexpected twist, leading to a surprising—and often humorous—ending. Paraprosdokians use the element of surprise to upend audience expectations and create a humorous or dramatic effect. (Sir Winston Churchill loved them)

Where there's a will . . . I want to be in it.

The last thing I want to do is hurt you . . . but it's still on my list.

Knowledge is knowing a tomato is a fruit . . . wisdom is not putting it in a fruit salad.

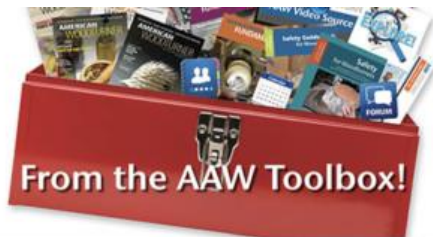
You do not need a parachute to skydive . . . you only need  
a parachute to skydive twice.

I used to be indecisive . . . now I'm not so sure.

To be sure of hitting the target . . . shoot first and call whatever you  
hit the bullseye.

I am supposed to respect my elders . . . but it is getting harder and  
harder to find someone older than I am.





# WOODTURNING FUNDAMENTALS

American Association of Woodturners  
November 2022 • Vol 11 No 4

**Linda Ferber**  
**Candle Holder Grouping**



Linda Ferber has a candle holder group in the latest issue of the AAW Toolbox and an article in Woodturning FUNDamentals. Congrats, Linda!

## TECHNIQUES

### OFF-AXIS JEWELRY

BY LINDA FERBER

I have explored jewelry making for a while, so it was natural to start investigating the addition of off-axis turning with my jewelry work. This style of jewelry is easy to make with a minimal investment in time and materials. But keep in mind small does not necessarily mean fast, because attention to detail at this scale is critical. Small objects invite scrutiny from viewers—more so than the attention someone is likely to give to a salad bowl before deciding on a purchase. And, it has always struck me that when a person chooses to wear your art, they are making a significant statement.

#### The wood

I turn these small pendants from remnants of end grain spindle projects (Photo 1). I keep a bin of useful-someday cutoffs, and the first task is to search for the best from the bin. But is always a good choice but not essential. The wood can be 2" - 3" (5cm - 8cm) diameter scraps and need not be long—the thickness of a pendant is typically 1/4" (6mm) or less. I prefer to start with a blank that is about 3-1/2" (9cm) long or less as this keeps vibration when turning to a minimum. This size will yield plenty of material for these slightly domed disk that will become off-axis pendants.

#### The off-axis jig

There are jigs you can purchase to accomplish this task, but these are so easy and quick to make. I chose to create jigs that represent three different offsets of 5, 15, and 20 degrees (Photo 2). For each jig I selected a piece of roughly 2" - (5cm-) square scrapwood with both ends squared off, then chucked the piece and turned a tenon on one end. Next, I made an angled cut on the opposite end of each blank to establish the three offset angles. There are several options for making the angled cuts, including using a Japanese saw and cutting by hand, or a bandsaw with a fine-tooth blade. If you use a bandsaw, be sure to secure the blank to keep it from rolling into the blade and causing injury. Sand the saw cuts to create a uniform, flat surface for attaching your jewelry blank.

#### Select stock



Small projects like this can be turned from remnants from past projects. Choose spindle stock as these are endgrain forms.

#### Create off-set jigs



Create jigs by rounding a spindle blank, then cutting an angle on the tailstock end with a handsaw or bandsaw.

#### BANDSAW SAFETY

To safely cut a round form on a bandsaw, securing the work is essential. See Betty Scarpino's article "Jig for Bandsawing Round Objects," linked below.

[tiny.cc/Bandsawingjig](http://tiny.cc/Bandsawingjig)



Linda Ferber  
Saint Paul, Minnesota  
651-497-6485  
lindajaneferber@gmail.com

I have been turning for more than 20 years and enjoy the creative possibilities and personal challenges that woodturning provides. The opportunity to try woodturning presented itself back when my dad auctioned his shop equipment and I purchased his lathe, thinking that with this one piece of equipment I could create with wood. With no previous experience with a lathe, I took a bowl turning class and found the local chapter of the AAW. Looking back, that one impulse purchase at an auction has made a big impact on my life.

My early memories of working on craft projects mostly revolved around spending time with family. I enjoy making items that capture a moment or

emotion. The first part of the process is the material and shape, selecting the wood, and turning the shape. The final step is applying color to bowls and pin jewelry.

Inspiration is drawn from my surroundings and memories, making a connection to these experiences and attempting to interpret them through the shape and color of a piece.

Several of my project articles have been published in *American Woodturner* and *Woodturning FUNdamentals*. Two most recent include a 2-part "Inlaid Whimsical Hand



"Mirror" (Aug 2021) and "More Fun with Button Inlay: Jewelry, Magnets, & More" (Nov 2021).

I have facilitated three Women in Turning Virtual Exchanges.

Two articles describing the events – "Ripples Become a Tsunami" (2021) and "Breaking Boundaries and Removing Limitations" (Apr 2021), were co-written with Marie Anderson.

I am a member of the Minnesota Woodturners Association and the AAW's Women in Turning (WIT) and Youth Committee.



## Introduction to Power Carving – Mushrooms

"Mark making" is a term used to describe the different lines, patterns, and textures that are made visible as a manifestation of applied or gestural energy. It is the gestural "language" of the artist. Texture and pattern are terms that describe various decorative elements. A pattern is a visual element that repeats, such as plaid or stripes, whereas texture can be felt, such as the surface of a brick or a piece of burlap.

With the basics today, I hope to inspire you to experiment and explore new techniques. Express yourself with energy and individuality. Start by making sample boards, getting familiar with your tools to improve your skill, and clarify your marks.

### INSPIRATION AND PLANNING

- "Don't wait for inspiration. It comes when you are working."
- "If you only look to other woodturners for inspiration, your possible outcomes are limited." – Beth Ireland

Focus on a subject or idea of something that interests you. Research and explore books, walks in the city or nature, the Internet, and more. Take photos and look at photos online. Create your own bulletin boards using photos, sketch books, and practice boards in wood.

Lately I have been walking in the Dakota County Parks, seeing nature, leaves, pine cones, and taking photos. Slowly, these themes are manifesting themselves in my work.

### TOOLS AND SUPPLIES

- PPE – mask, good lighting and ventilation, comfortable chair, eye protection, PowerCap or Trend air shield, dust extractor, etc.
- Dremel – inexpensive and available at many places. The bits and burs are interchangeable with other units. This is good for an introduction to test your interest, but it is heavy and noisy. You might not be able to use it for long periods.
- Micro carver unit – very versatile – I will focus on three burs. Learning a new skill or technique involves practice, making multiples of a project.

That is where I started taking a few burs, exploring what marks they make, how to use them to get results and various applications.

Today's carvings will be painted using a dry brush technique to enhance the depth of the marks with color on the background and the raised edges left by the marks. When painting, keep in mind the end results and focus on layers of texture and the raised areas that will catch the paint and reflect light.

### CARVING APPLICATIONS WITH SELECTED BURS

There are many types of power carvers and burs, and there are many considerations involving wood selection and grain. Plan your project and keep in mind details, interest, and movement of the final piece. Cover your eyes and wear dust protection.

- Ball nose and cylinder stump cutter 3/32" size, or most units have collets for multiple sizes.
- Ball cutters – Swiss diamond is a favorite.
- Cup cutters – [mdiwoodcarvers.com](http://mdiwoodcarvers.com)
- Shop-made cup bur by Neil Robinette – a drill bit that has been shortened and a U-shape carved in center
- Sanding bits
- Brushes – soft bristle to remove dust and various wire brushes for texture

Carving objectives for skill building – Understanding and getting comfortable with your tools. Develop the shape and design for project. Simplify lines. Add layers of texture so every inch of the piece is covered. Undercuts add interest and depth.

### HOLDING TOOL

- Always braced with a triangle formed between your hands, work and table surface, and the hand piece of the tool. Use gentle pressure on the first pass to outline the shape, going back with more pressure to add depth.
- Speed is a very similar concept as the lathe, i.e., faster for cutting, slower for sanding, very slow for brushes. Not all machines have a digital speed

Linda will use much of this in her December 3 embellishment demo





readout. Get familiar with your machine and watch the angle of your cuts.

- Cuts
  - Direction while carving should always be toward you.
  - Depth – make more than one pass.
- Carving can be described as creating texture. This adds depth and interest to images you are creating. Go beyond mushrooms. Other examples are the pine cone, which involves two burs. Applying paint adds to the image and recognition of the item. Another example of this added detail is a tree trunk with two marks combined with paints.

#### TEXTURES AND HOW THEY ARE MADE

##### Mushroom

- Cap – ball nose bur
- Gills – roto saw, ball burs
- Stem – roto saw, ball burs

##### Tree trunk

- Ball nose for general lines (watch spaces in between). The bit that came with Dremel set for in between spaces to give dimension. Carbide grinding stone.

##### Pine cone

- Cup cutter
- Ball cutter for carving depth into the pine cone seed scale

##### Daisy or sunflower

- Cup cutter
- Roto saw for petals
- Ball cutter for stippling

Stippling – Covering an area with dots, a wildly time-consuming technique. Stippling can be done with a wide variety of sizes, works well with painting techniques, and can create optical illusions by adding depth and interest.

- As design itself
- As background for larger design
- To add character marks for detail

A summer water scene, as an example, has features of three types of reflection, each with its own pattern and texture.

#### SANDING

Power carving requires sanding and smoothing with the carving unit and various bits to using a bit of sand paper on the end of a chop stick to hand sanding. You also will need a brush to remove dust and pieces of sand paper for hand sanding.

##### Power sanding

- Flexible sanding disc from [mdiwoodcarvers.com](http://mdiwoodcarvers.com) consists of mandrel and pop-on discs in various grits

- Mandrel with cut bits of sand paper
  - 3M 5925 Double Sided Heavy Duty Mounting Tape, Waterproof VHB Foam Tape, 32FT Length, 0.4" Width or ½" width
  - Prepare various strips in three grits cut to size for hand sanding and power sanding
- 3M sanding disc
- Satin defuzzing tool from [mdiwoodcarvers.com](http://mdiwoodcarvers.com)
- Buffing disc on mandrel part of Dremel kit

Hand sanding – Power sanding takes you only so far. You easily can round over a sharp edge with power sanding. Nothing replaces hand sanding.

- Chop sticks with top cut at slant and small piece of tape with sandpaper attached
- Piece of sand paper in hand

#### PAINTING

Dry brush painting technique should be on a clean surface, using sanding and/or brushes to achieve the perfect surface. Like most tasks, there is the best tool for the job, and this applies to brushes: flat for large board stroke areas, round for applying lots of paint to cover entire area, slanted for dry brush application.

- Prepare the surface. Paint will not stick to charred or dusty wood, so clean well. It will give your paint a cleaner, crisper surface. First use a soft wire brush and finish with a toothbrush.
- To add depth, apply a base coat of black or dark paint and wait for it to dry.
- Drybrush is a painting technique using a relatively dry paint brush but still holds a small amount of paint. With drybrush over carving and burning, you want to paint only the lines that stand proud. 20 layers is ideal – 6 is a bare minimum.
- Textures painted with a dry brush are characterized by the specific transitions of light and shadow and gossamer tones. Water is an example.
  - Select a range of blues. It is best if there are at least 4 to 5 colors, such as aqua shades and green tones.
  - Black and white can be mixed with each color. Metallic paints or additions are favorites – metallic silver, bronze, or gold.

Color basics, the color wheel

- Primary colors: red, blue, yellow
- Secondary colors: mixture of two of primary colors
- Tertiary colors: mixture of primary and secondary colors
- Complimentary colors are located opposite on color wheel
- Analogous colors are located together on color wheel

Also need a pallet for paint, water, paper towels, and a spray bottle if you are working for longer period a spray bottle. The acrylic on the pallet will dry out, so adding a little water with mister or with brush keeps it fresh.





Pres. Lee Luebke

## WOOD SEALER

At this time sealer is available from:

Lee Luebke, Corcoran MN, [lgluebke@comcast.net](mailto:lgluebke@comcast.net)

Julie Abbott, Eden Prairie MN, [JulieAbbott@EdinaRealty.com](mailto:JulieAbbott@EdinaRealty.com)

Bob Meyer, Lino Lakes MN, [rjmbobco@comcast.net](mailto:rjmbobco@comcast.net)

Steve Mages, Minnetonka, [smages@juno.com](mailto:smages@juno.com)

Paul Laes, Cottage Grove, [Woodforfun@hotmail.com](mailto:Woodforfun@hotmail.com)

I am looking for others to sell sealer throughout the metro area.

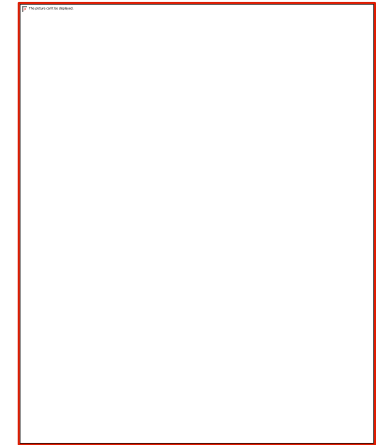
Bring plastic jugs if you have them.      Sealer \$15.00 gallon.

We need heavy duty plastic jugs for dispensing sealer. If you have any gallon containers, we could sure use them. It would be best if you could bring your empty containers to be filled.

The club now has a chip card reader so you can pay Lee Luebke by credit card or cash.

Anyone wanting to sell sealer can buy a quantity from me if you like or take some gallons and sell them to members and send the money to Treasurer Mark Debe.

Lee Luebke, President MWA, 612-419-8743





Please send items for the Bulletin Board to: [mdrprof@gmail.com](mailto:mdrprof@gmail.com)

As a group which cannot meet in person, we'd like to keep up with our friends and hear about awards, shows, family news (weddings, accomplishments of children and grandchildren), retirements, hospital stays, illnesses, book recommendations, website recommendations and anything else you would normally talk about in person at MWA or Sub-Group meetings. All of these and more are possibilities for the Bulletin Board. We're not seeing our MWA friends face-to-face, but we still need to stay in touch.





## Lathe Contact List

The MWA Newsletter is presenting a list of members who would be happy to give you pros & cons and experiences with the lathes they own or with which they have had experience.

This list is being updated every week as more members are contacting me saying they'd be happy to be listed. If you would be willing to have your name and email address listed under the type of lathe(s) you have, please contact me .

<u>LATHE</u>	<u>Member</u>	<u>Email address</u>
Bonnie Klein Mini	Bill Szydlo	<a href="mailto:szydlo.bill@gmail.com">szydlo.bill@gmail.com</a>
Bonnie Klein Mini 12x18	Linda Ferber	<a href="mailto:lindajaneferber@gmail.com">lindajaneferber@gmail.com</a>
Craftsman Professional	Steve Mages	<a href="mailto:smages@juno.com">smages@juno.com</a>
Delta mid size 12"	Randall Thompson	<a href="mailto:thomp013@umn.edu">thomp013@umn.edu</a>
Delta mid size 12"	Dan Larson	<a href="mailto:dhjlar@comcast.net">dhjlar@comcast.net</a>
Delta midi	Bob Meyer	<a href="mailto:rjmbobco@comcast.net">rjmbobco@comcast.net</a>
Delta midi	Joe Zwirn	<a href="mailto:joezathome@msn.com">joezathome@msn.com</a>
Grizzley G 0733	Martin Young	<a href="mailto:martin.clay.young@gmail.com">martin.clay.young@gmail.com</a>
Harbor Freight(Central Machinery 10x18)	Rusty Ogren	<a href="mailto:rick.Ogren@consolidated.com">rick.Ogren@consolidated.com</a>
Jet 1015	James Zangl	<a href="mailto:james.zangl@gmail.com">james.zangl@gmail.com</a>
Jet 12/21	Lee Luebke	<a href="mailto:lguebke@comcast.net">lguebke@comcast.net</a>
Jet 14x42	Rusty Ogren	<a href="mailto:Rick.Ogren@consolidated.com">Rick.Ogren@consolidated.com</a>
Jet 1640	Joe Zwirn	<a href="mailto:joezathome@msn.com">joezathome@msn.com</a>
Jet 1642 EVS	Jenny Trice	<a href="mailto:jennytrice@aol.com">jennytrice@aol.com</a>
Jet 1642 1.5 hp	Greg Just	<a href="mailto:woodturner07@gmail.com">woodturner07@gmail.com</a>
Jet JML 10/14 Mini	Neil Robinette	<a href="mailto:northsideturners41@gmail.com">northsideturners41@gmail.com</a>
Jet JWL - 1220VS	John Campbell	<a href="mailto:campbell.jn@gmail.com">campbell.jn@gmail.com</a>
Laguna 12/16	Lee Luebke	<a href="mailto:lguebke@comcast.net">lguebke@comcast.net</a>
Laguna 18/36	Jay Schulz	<a href="mailto:jfschulz@comcast.net">jfschulz@comcast.net</a>
Laguna 18/36	Dan Larson	<a href="mailto:dhjlar@comcast.net">dhjlar@comcast.net</a>
Laguna 18/36	Lee Luebke	<a href="mailto:lguebke@comcast.net">lguebke@comcast.net</a>
Laguna 18/36	Mike Lucido	<a href="mailto:mike.s.lucido@gmail.com">mike.s.lucido@gmail.com</a>
Laguna Revo 18/36 220v	John Campbell	<a href="mailto:campbell.jn@gmail.com">campbell.jn@gmail.com</a>
Laguna Revo 18/36 220v	Neil Robinette	<a href="mailto:northsideturners41@gmail.com">northsideturners41@gmail.com</a>



# Lathe Contact List (cont'd)

NOVA 3000	James Zangl	<a href="mailto:james.zangl@gmail.com">james.zangl@gmail.com</a>
Nova Comet II	Rolf Krogstad	<a href="mailto:rolf.krogstad@gmail.com">rolf.krogstad@gmail.com</a>
Nova Comet II	Mike Anderson	<a href="mailto:manderson4700@comcast.net">manderson4700@comcast.net</a>
NOVA DVR 16"	Dan Larson	<a href="mailto:dhjar@comcast.net">dhjar@comcast.net</a>
NOVA DVR 16"	Joe Zwirn	<a href="mailto:joezathome@msn.com">joezathome@msn.com</a>
NOVA DVR XP	Bill Szydlo	<a href="mailto:szydlo.bill@gmail.com">szydlo.bill@gmail.com</a>
NOVA DVR XP 16"	Chuck Shreffler	<a href="mailto:cshreffler@outlook.com">cshreffler@outlook.com</a>
Oneway 2036	Dick Zawacki	<a href="mailto:dickzawacki@gmail.com">dickzawacki@gmail.com</a>
Powermatic 2014	Steve Legvold	<a href="mailto:stevelegvold@gmail.com">stevelegvold@gmail.com</a>
Powermatic 2520B	Steve Mages	<a href="mailto:smages@juno.com">smages@juno.com</a>
Powermatic 3520B	Todd Williams	<a href="mailto:toddwilli@comcast.net">toddwilli@comcast.net</a>
Powermatic 3520B	Steve McLoon	<a href="mailto:s.c.mcloon@gmail.com">s.c.mcloon@gmail.com</a>
Powermatic 3520C	Reid zimmerman	<a href="mailto:reidazimmerman@gmail.com">reidazimmerman@gmail.com</a>
Powermatic 3520C	Dan Ernst	<a href="mailto:piloto1@comcast.net">piloto1@comcast.net</a>
Powermatic 4224B	Dan Larson	<a href="mailto:dhjar@comcast.net">dhjar@comcast.net</a>
Powermatic 45	Todd Williams	<a href="mailto:toddwilli@comcast.net">toddwilli@comcast.net</a>
Record Power Coronet Herald 14 x 20	Gary Egbert	<a href="mailto:gtegbert@yahoo.com">gtegbert@yahoo.com</a>
Robust American Beauty	Tim Dodds	<a href="mailto:tbikefast@aol.com">tbikefast@aol.com</a>
Robust Liberty	Jim Jacobs	<a href="mailto:woodmanmn@aol.com">woodmanmn@aol.com</a>
Robust Liberty	Warren Gerber	<a href="mailto:xlwalleye@gmail.com">xlwalleye@gmail.com</a>
Robust Sweet 16	Linda Ferber	<a href="mailto:lindajaneferber@gmail.com">lindajaneferber@gmail.com</a>
Robust Sweet 16	Bob Meyer	<a href="mailto:rjmbobco@comcast.net">rjmbobco@comcast.net</a>
Shopsmith	Martin Young	<a href="mailto:martin.clay.young@gmail.com">martin.clay.young@gmail.com</a>
Shopsmith (restored)	Lee Luebke	<a href="mailto:lguebke@comcast.net">lguebke@comcast.net</a>
Vega 2600	Bill Szydlo	<a href="mailto:szydlo.bill@gmail.com">szydlo.bill@gmail.com</a>
Vicmarc VL 300	Lee Tourtelotte	<a href="mailto:leetourtelotte@icloud.com">leetourtelotte@icloud.com</a>



# Member Help Line

The club has organized a "Member Help Line", the purpose of which is to answer questions/give advice and help educate our membership. Even though it is more difficult during the Covid-19 social distancing time to help people in home workshops, there are still ways to help each other with woodturning questions/problems. The volunteers can help via email, telephone, Zoom, some personal contact using social distancing and masks, and probably other ways we haven't tried yet.

Maybe you're a beginner looking for advice on what to buy.

Maybe you have questions on chucking.

Maybe you have sharpening questions.

The volunteers listed on the next page are more than happy to help. Some have listed areas in which they feel more comfortable, but all will help with your woodturning question.

We would like more members to volunteer for our Member Help Line. If you would like to be "on call" please contact Mike Rohrer at [mdrprof@gmail.com](mailto:mdrprof@gmail.com) with your phone #, email address, area where you live, areas you'd be willing to help with, and your name will be added to the list.

Continued on next page





# Member Help Line

Mike Rohrer	612-276-9556	<a href="mailto:mdrprof@gmail.com">mdrprof@gmail.com</a>	bowls, boxes	South Mpls
Steve Miller	715 821-8726	<a href="mailto:ssmiller920@gmail.com">ssmiller920@gmail.com</a>	all types, light on segmenting	River Falls, WI
Lee Tourtelotte	612-670-1874	<a href="mailto:leetourtelotte@icloud.com">leetourtelotte@icloud.com</a>	all types, beginner, advanced	South Mpls
Warren Gerber	651 403 2883	<a href="mailto:xlwalleye@gmail.com">xlwalleye@gmail.com</a>	Bowls	Mendota Heights
Jim Jacobs	651-497-1309	<a href="mailto:woodmanmn@aol.com">woodmanmn@aol.com</a>	beginner/advanced, segmenting, skews	Hastings
Dick Zawacki	507-744-5748	<a href="mailto:dickzawacki@gmail.com">dickzawacki@gmail.com</a>	general, bowls, wood carving	Northfield
Mike Lucido	651-738-2551	<a href="mailto:mike.s.lucido@gmail.com">mike.s.lucido@gmail.com</a>	general woodturning	Woodbury
Bill Campbell	715-338-2634	<a href="mailto:wm.e.campbell@uwrf.edu">wm.e.campbell@uwrf.edu</a>	general woodturning	River Falls, WI
Mark Kelliher	651-636-8678	<a href="mailto:markandkathy007@comcast.net">markandkathy007@comcast.net</a>	general woodturning	Arden Hills
Todd Williams	651-274-4658	<a href="mailto:toddwilli@comcast.net">toddwilli@comcast.net</a>	general woodturning	Lake Elmo
Bob Meyer	651-483-6187	<a href="mailto:rjmbobco@comcast.net">rjmbobco@comcast.net</a>	bowls, ornaments, sharpening, gen'l.	Lino Lakes
Dick Hicks		<a href="mailto:rbhicks@rbhicks.com">rbhicks@rbhicks.com</a>	platters, spindle work, bowls	Zoom from shop
Steve Mages	952-544-5286	<a href="mailto:smages@juno.com">smages@juno.com</a>	general woodturning	Minnetonka
Neil Robinette	763-639-1085	<a href="mailto:northsideturners1@gmail.com">northsideturners1@gmail.com</a>	sharpening, tool control, turning vs budget	Brooklyn Park
Andy Levesque	651-769-4070 TEXT	<a href="mailto:andy.m.levesque@gmail.com">andy.m.levesque@gmail.com</a>	resin/epoxy casting, hybrid turning, vacuum stabilizing, CNC & laser engraving	Lindstrom
Rusty Ogren	612-990-4857	<a href="mailto:richardogren@protonmail.com">richardogren@protonmail.com</a>	resin questions, crack filling	Plymouth
Dan Ernst	651-280-7484	<a href="mailto:pilot01@comcast.com">pilot01@comcast.com</a>	coring, wing bowls, bowls, gen'l turning	Maplewood, St Paul
Bill Szydlo	651-206-5547	<a href="mailto:szydlo.bill@gmail.com">szydlo.bill@gmail.com</a>	segmenting, sharpening, gen'l turning	Northfield, MN
James Zangl	6541-645-4696	<a href="mailto:james.zangl@gmail.com">james.zangl@gmail.com</a>	bowls, hollow forms, vases, pens, etc	St Paul -Hamline area
Joe Zwirn	612-619-4793	<a href="mailto:joezathome@msn.com">joezathome@msn.com</a>	segmenting, general woodturning	Brooklyn Center
Mark Palma	612-991-7733	<a href="mailto:marksworkshop@gmail.com">marksworkshop@gmail.com</a>	finishing & color	Lanesboro



When one door closes and another door opens . . .  
You're probably in prison!

When I say "the other day" . . .  
I could be referring to anytime anytime between  
yesterday and 20 years ago

I had my patience tested . . .  
I'm NEGATIVE!!!!

If you're sitting in public and a stranger takes a seat near you,  
just stare straight ahead and say . . .  
"Did you bring the money?"

I hate when a couple argues in public and I missed the beginning . . .  
and I don't know whose side I'm on!

When I ask for directions . . . don't use words like EAST!



## Editor's Notes



Congratulations to our new President, Charlie Prokop! I'm sure he'll look forward to all the help and suggestions you can offer to make this the best woodturning club in the country.

Winter has officially arrived. When Minneapolis and St. Paul declare a Snow Emergency, it's winter. Some family members and friends who do not live in Minnesota are amazed we have designated "Snow Emergencies." They just assume the entire winter in Minnesota is a Snow Emergency.

Lots happened with the MWA in November. Make sure you check out the Hamburger Club's tour of the Gallery of Wood Art at the headquarters of the AAW in the Landmark Center in St. Paul. If you haven't seen it, you MUST visit it. If you contact the AAW office ahead of time and let them know you are an AAW member (probably being an MWA member is enough, but AAW is better), you can ask if Tib Shaw, the Art Director could be available to show you some especially important pieces. If she has time, she'll do it.

I hope to see lots of you at the December 3<sup>rd</sup> MWA meeting. Send your entries for the Member Ornament Challenge to me by December 10. Guidelines are in the newsletter

If you have any suggestions for the newsletter, please contact me.

Mike Rohrer, Editor  
[mdrprof@gmail.com](mailto:mdrprof@gmail.com)

