

Minnesota WoodTurners Association

A LOCAL CHAPTER OF THE AMERICAN ASSOCIATION OF WOODTURNERS

AAW | AMERICAN ASSOCIATION
OF WOODTURNERS

Volume 2021 December



Death at the
Lathe
Part 4-Conclusion
p. 43

*Demo - Glenn Lucas
Turning a Square Bowl
p. 5*



BOARD MEMBERS

Officers

PRESIDENT

Lee Luebke

VICE PRESIDENT AND LIBRARY

Janese Evans

TREASURER

Mark Debe

RECORDING SECRETARY

Rosanne Gold

Directors

Reid Zimmerman **501c3 Coordinator**

Dick Hicks

MEMBERSHIP DIRECTOR

Ken Crea

TECHNICAL SUPPORT

Dick Hicks

**AAW REPRESENTATIVE &
DEMONSTRATIONS**

Linda Ferber

OTHER STAFF SUPPORT

Bob Meyer - Group Purchasing

Dan Larson - Class Coordinator

Mike Hunter – Professional Demonstrations

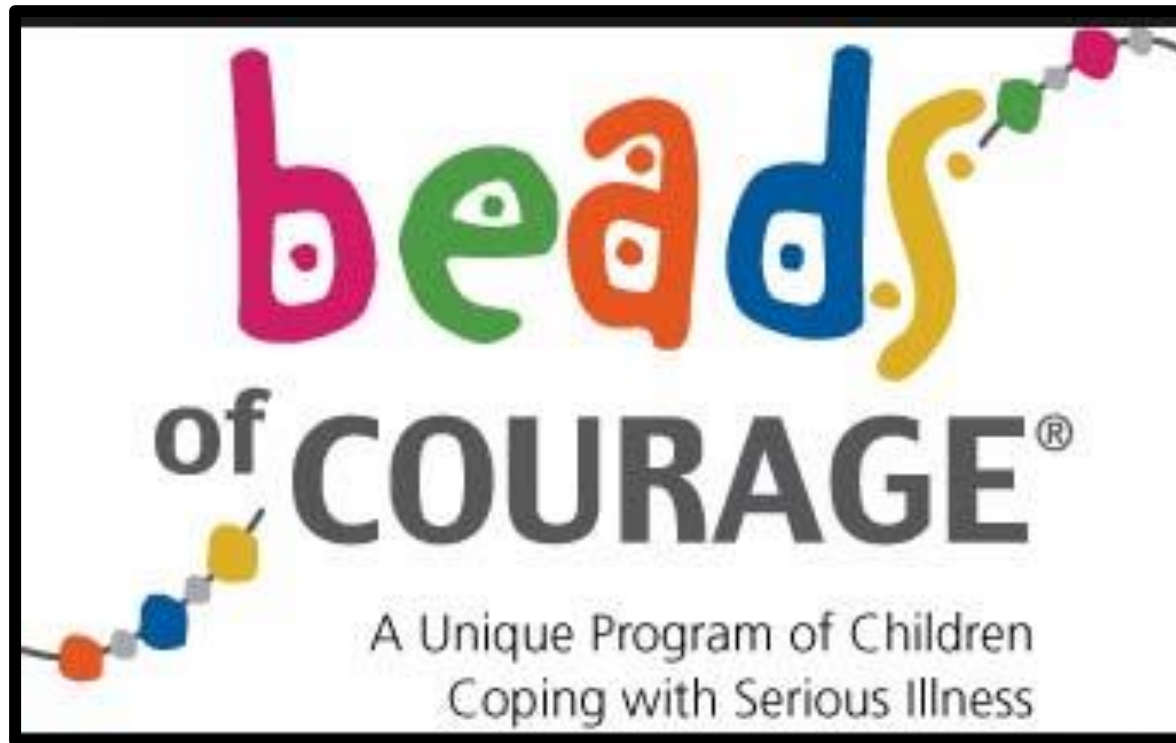
Paul Laes – Sales at Meetings

Mike Rohrer - Newsletter

In This Issue

Beads of Courage	p. 3
MWA Demo	
Glenn Lucas	p. 5
Tues Turners' Tune Up	
Jim Jacobs	p. 12
Instant Gallery	p. 18
Tips for Turners	p. 30
Member Challenge	p. 33
Death At The Lathe	
Short Story-Conclusion	p. 43
Bulletin Board	p. 52
New Members	p. 58
Lathe Contact	p. 59
Member Help Line	p. 61
Editor's Notes	p. 63





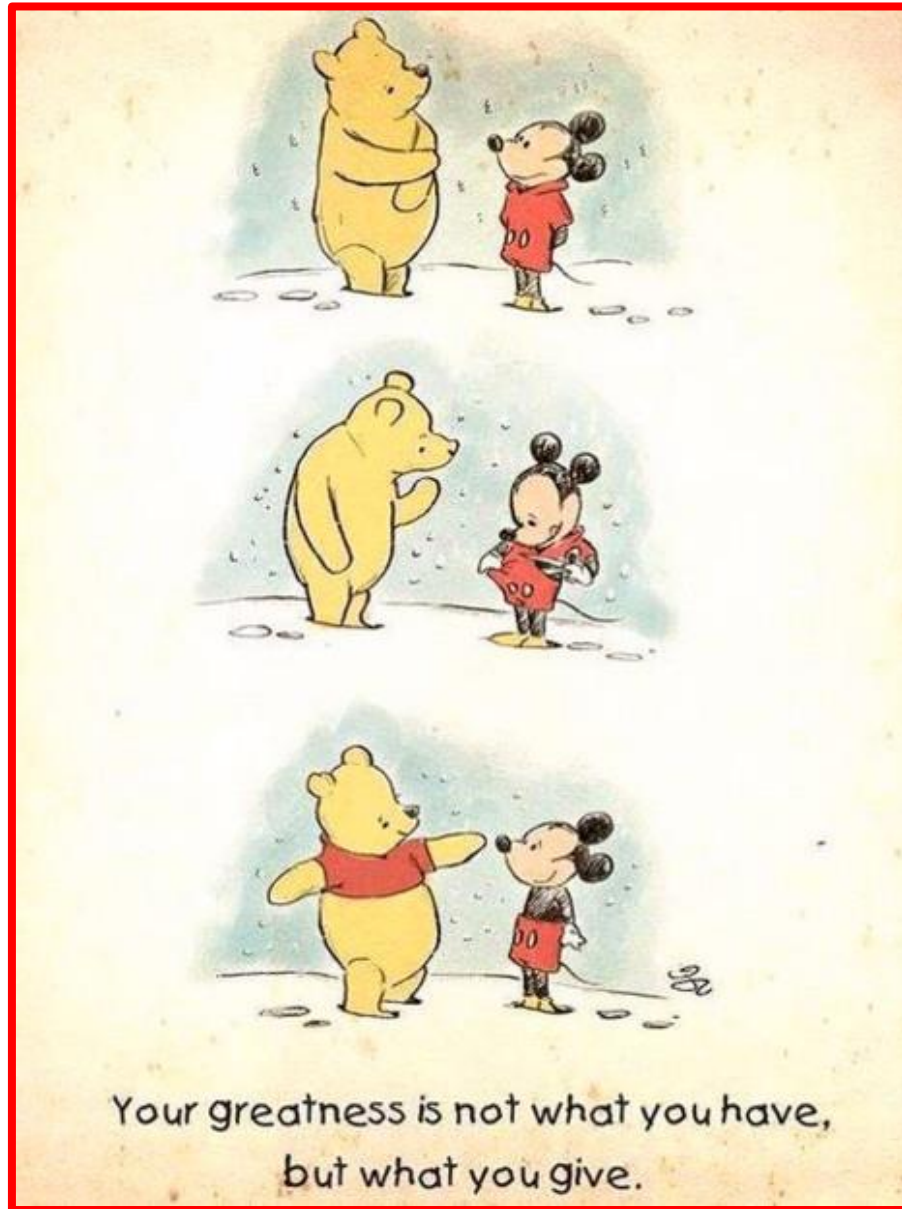
I have Beads of Courage logo beads and artist cards available. I am happy to mail them out to any turner who needs them. Just contact me.

Jay Schulz

Cell: 651-398-0717

Email: jfschulz@comcast.net







MWA December Demo

Glenn Lucas

TURNING A SQUARE BOWL



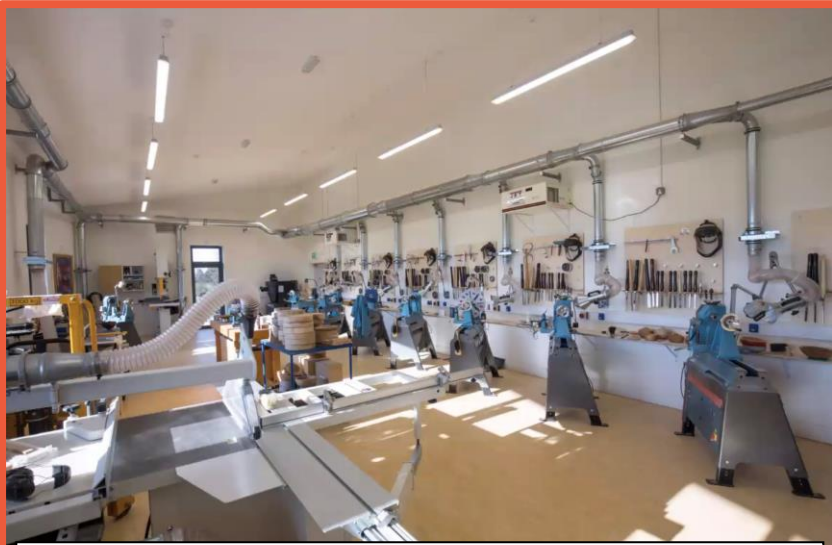
Cornelia & Glenn Lucas in their new shop and classroom, County Carlow, Ireland

No one could ask for a more beautiful location for their shop than the setting for Glenn's complex



Pres. Lee Luebke introduces the Lucases and describes how the virtual demo will work.

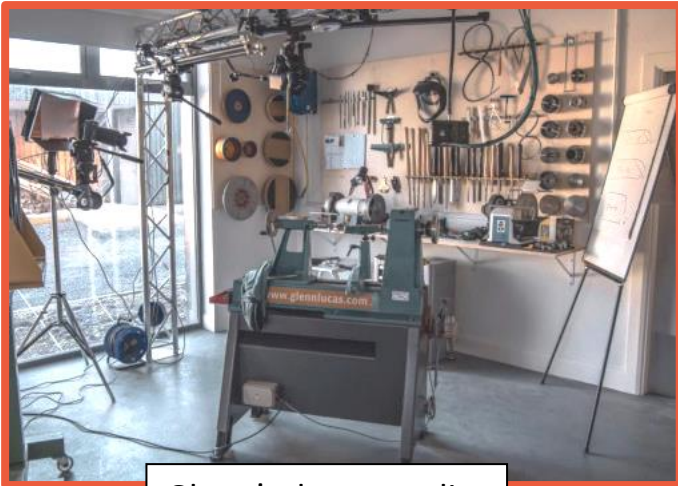




The State-of-the-Art classroom at Glenn's complex



A recent class and their production



Glenn's demo studio



Glenn's bowls for which he's most well-known



Glenn loading his kiln

MWA December Demo (cont'd)

Glenn Lucas



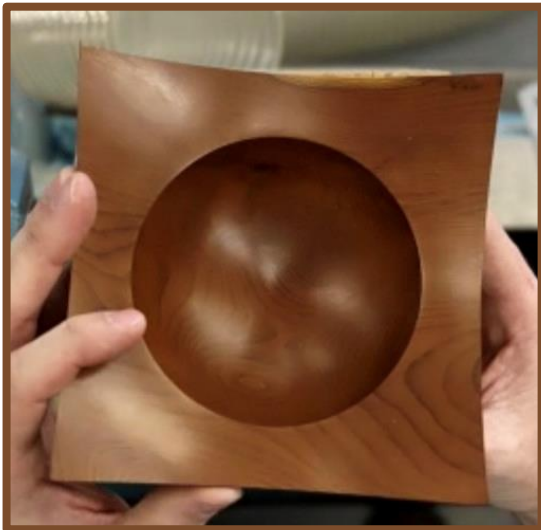
A 24" square bowl that won an international prize



How Glenn mounted it for turning



Blank of spalted beech



Glenn did this yew bowl years ago



Beginning to turn the blank; the third for the rim is marked



Beginning to turn the tenon and base

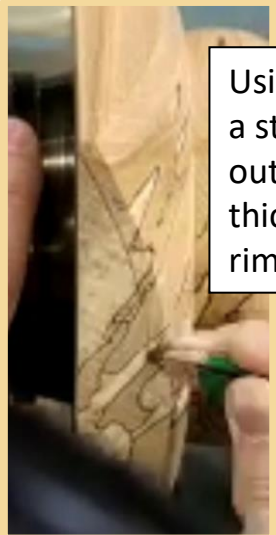




Developing the base and beginning the bowl



Corners are determined and will be protected



Using his finger as a stop, Glenn outlines the thickness of the rim



Beginning to shape the concavity of the rim



Thinning the inside of the rim staying away from the corners



Hollowing the bowl



Final sanding of
the rim

Thank you, Glenn for
a very interesting
and informative
demo



MWA December Demo (cont'd)

Glenn sent a recording of the Zoom presentation to Pres. Lee Luebke and said we could have access for a couple of days. Many demonstrators who do woodturning education for a living will not leave a recording on our website for an indefinite period. If you want to see the demo by our outstanding demonstrators, sign in for the Saturday club meetings.

FOR NOW, WE WILL CONTINUE DOING ZOOM DEMO MEETINGS.
MOST MEETINGS ARE SCHEDULED FOR THE FIRST SATURDAY OF THE MONTH
AND WILL START AT 9:00 am

January's Demo will be Rebecca DeGroot, Turning a Walking Mushroom
Saturday, January 8, 9:00 am

An email has been sent to all members with the log-on code for the Zoom

The following months' demos will be:

February – Barbara Dill

March- Mark Palma

April – Jason Breach

May – John Beaver

June – Carl Jacobson

July – Jason Clark



RHYMES WITH ORANGE HILARY PRICE



Tuesday Turners' Tune Up

Produced by Dan Larson

Getting A Grip & Chuck It by Jim Jacobs

Jim, one of the very early members of the MWA and a wealth of woodturning knowledge, in his shop in Hastings. His TTTU will go over hundreds of ways of holding wood so that we may shape it with our tools.



A mini drive



Multiple drives



Steb centers



Tuesday Turners' Tune Up



Jim loves the Steb centers. With the spring-loaded drive, he does not have to stop the lathe to remove the piece being turned

Jim Jacobs



Penn State headstock drives



Jim prefers mounting with a faceplate rather than a screw. This is a self-centering faceplate. Jim uses 4 screws to attach the faceplate.



Jim's rule on chucks: DO NOT BUY CHEAP CHUCKS. Jim prefers Oneway, Nova and Easy Wood.



Tuesday Turners' Tune Up

Jim Jacobs



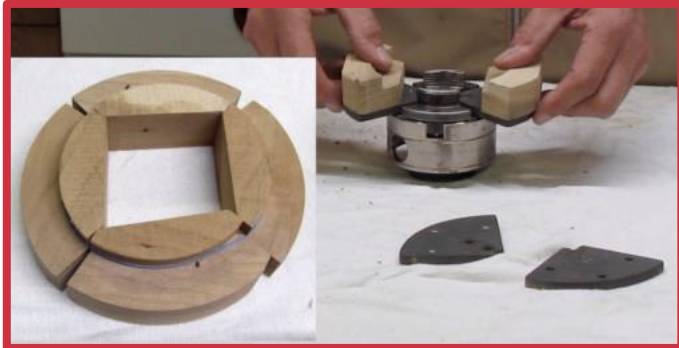
Oneway flat jaws



A Longworth chuck - homemade



To mount a natural edge bowl, Jim clears away enough bark to get to solid wood and uses a 2-prong drive



With Oneway flat jaws, Jim can use specially made jaws for specific purposes



A favorite trick of Jim's is to glue on a square of wood to hold with the chuck jaws



Jim screws the square on wet wood and glues it on kiln-dried wood



Tuesday Turners' Tune Up

Jim Jacobs



The square is screwed onto this wet wood. Jim's mounting squares are 3" thick so there will be a solid seat for the chuck against the wood



An Elio drive for easy adjustment on the bark side of a natural edge blank



Jim uses paper glue joints for joining mounting squares to blanks

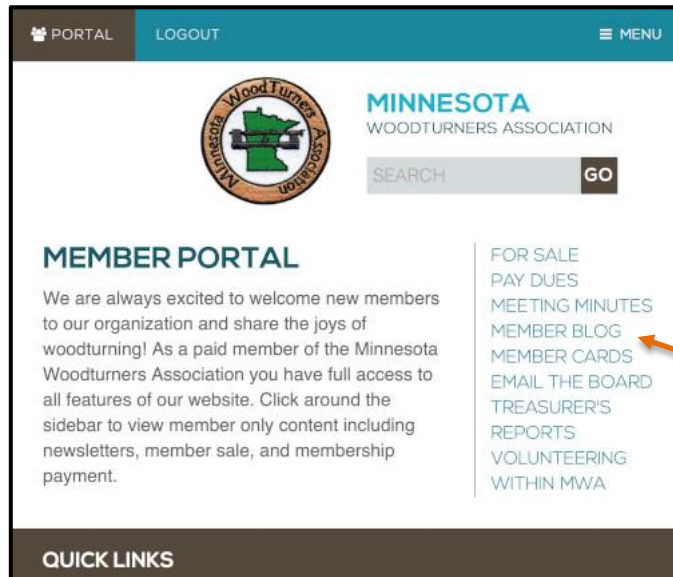


Nova live center kit



Tuesday Turners' Tune Up

Jim's entire program can be watched using the MWA Member Blog

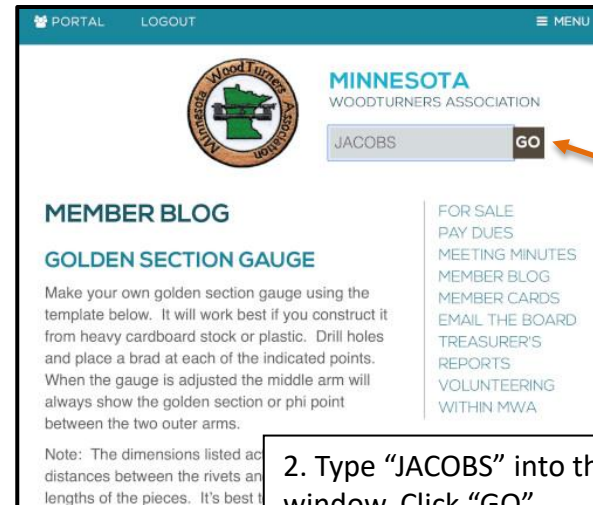


1. Log into the MWA website and click on the "MWA Blog"

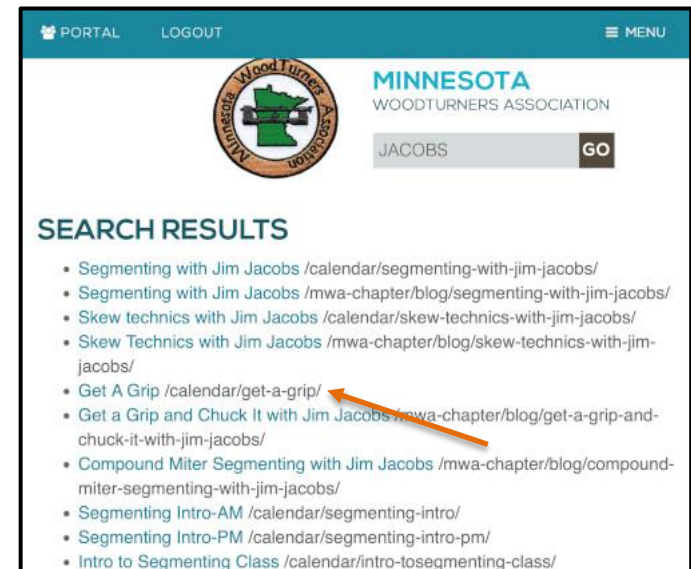
3. Click on "Get a Grip and Chuck It"

Thanks so much, Jim and Dan, for such an excellent, information-filled TTTU!

Jim Jacobs



2. Type "JACOBS" into the search window. Click "GO"



A Bowl

By Jane Hirshfield*

If meat is put into the bowl, meat is eaten.

If rice is put into the bowl, it might be cooked.

If a shoe is put into the bowl,
the leather is chewed and chewed over,
a sentence that cannot be taken in or forgotten.

A day, if a day could feel, must feel like a bowl.
Wars, loves, trucks, betrayals, kindness,
it eats them.

Then the next day comes, spotless and hungry.

The bowl cannot be thrown away.
It cannot be broken.

It is calm, unclipsable, rindless,
and, big though it seems, fits exactly in two human hands.

Hands with ten fingers,
fifty-four bones,
capacities strange to us almost past measure.
Scented – as the curve of the bowl is –
with cardamom, star anise, long pepper, cinnamon, hyssop.

*From the book, LEDGERS, Alfred A. Knopf, ©2020



Instant Gallery

Charlie Prokop



Wood list, starting from the left, going across the front. and circling the back

1st vase	spalted maple, palm, rosewood, "brown" wood, walnut rings, white maple
2nd bowl,	cherry, purpleheart, padauk
3rd bowl,	birch, padauk, Honduran walnut, "brown" wood
4th bowl	crab apple, Honduran walnut, padauk, epoxy
5th bowl	birch burl with epoxy (solid blank)
6th bowl	birch burl, walnut, padauk,
7th bowl	maple, walnut, "brown" wood, purple heart

Larger bowls are pushing 12" dia
The vase is 9" tall, and 10" dia



Instant Gallery

Charlie Prokop

I made 3 square bowls last summer. I never got around to the 4th till this challenge! (Charlie got this to me too late for the square bowl challenge last month)



Highly figured walnut with a tung oil finish

Instant Gallery

Lee Tourtelotte



Lee's birdfeeder from
November's newsletter being
put to good use in December



Instant Gallery

Lee Tourtelotte



Red Cedar candy bowl, dyed walnut lid, blackwood finial with rhinestone - finished with tung oil.



Instant Gallery

Mike Rohrer



I've been having fun with Charlie Prokop style "bowls from a board". This one is walnut with maple, oak and granadillo inserts. It's still hard to get the 2-part layers and the inserts perfectly lined up.



Instant Gallery

Mike Rohrer



I have fun with the challenge of taking a blank that seems to have defects or areas that would make it difficult or impossible to turn a standard bowl and see what I can come up with. Here's a slightly spalted maple blank from a crotch. I liked the grain pattern and tried a platter.

Instant Gallery

Mike Rohrer



This was a mesquite blank that needed some slight modifications to make a bowl.



Instant Gallery

Warren Gerber



These are 11"X 3" white pine bowls. They have very interesting growth rings because they were made from a branch that was nearly horizontal to the ground. It was the branch you would select to hang your swing from.



This started out to be a once-turned black walnut platter. It was a black walnut crotch, which I thought was perfect platter material. Then it morphed into a black walnut plate, which I microwaved and it started to go crazy warping. It finally became a black walnut 10-inch clock.

I think ET got stuck in the clock and needs help getting out so he can call home. Maybe ET got himself into a time warp and couldn't get out. My mother planted that tree probably 50 years ago and my nephew cut it down to improve the view from his deck. Does that make the clock a family heirloom?



Instant Gallery

George Martin



A beaded dish is from flat white oak; 7" wide



A birch bowl with green layers of milk paint and a hint of bark left on. 5" wide



10" platter from Brazilian cherry

All were finished with Odie's Oil



Instant Gallery

George Martin



I finally turned this piece of ash into a heart-shaped bowl. I finished it with Watkins light walnut and then Odie's oil. It looks like a Rorschach psychological test inside. It is about seven inches wide.



Ten small bowls (about 4 inches wide, and an inch thick) all made from construction grade pine from a work site. What I love is how light and fragile each piece feels, and how the grain is so visible.

I finished some with Watco Light Walnut oil and others with Odie's oil. Five of them were Christmas gifts for our neighbors. All holding chocolate!



Instant Gallery

Martin Young



This angel is made from ash and stands 13" tall. The body of the angel is a multi-axis turning.

**I STILL DON'T KNOW WHAT
I'M WEARING TO THE LIVING
ROOM NEW YEAR'S EVE.

I MIGHT NOT EVEN GO.**



Tips For Turners

If you want to impress your family and friends by using Greek when you're talking about your wood, try

xylophilous

PRONUNCIATION:
(zy-LOF-uh-luhs)

MEANING:
adjective: Growing on or living in wood

ETYMOLOGY:
From Greek xylo- (wood) + -philous (liking). Earliest documented use: 1862



Tips For Turners

Mike Rohrer

I like to mount wood to be turned with a screw chuck when I can. As my hands get increasingly arthritic, it is much more difficult to get the the blank tight up against the chuck and get it loose from the chuck once the outside is turned. I bought a “band wrench” from my neighborhood hardware store (Nokomis Hardware) and it works great!





“Good heavens! Pablo got an ‘F’ in art! ... Well, I’m just going to go down to that school myself and meet this teacher face to face!”

Monthly Challenge



New 2021 Monthly Meeting Challenge.

We are going to start up the monthly challenge.

The challenge will start in February and sponsored by Woodcraft. We will have some \$10.00 Woodcraft gift cards to give out through a random drawing giving all an equal chance to win. Number of cards to be determined.

To be included in the gift card drawing, pictures and description should be submitted via email to Mike Rohrer mdrprof@gmail.com *once finished but no later than one week before the Monthly Meeting date.* All have an equal chance at winning a gift card.



The Monthly Challenge for
January was
“Turn A Pen”



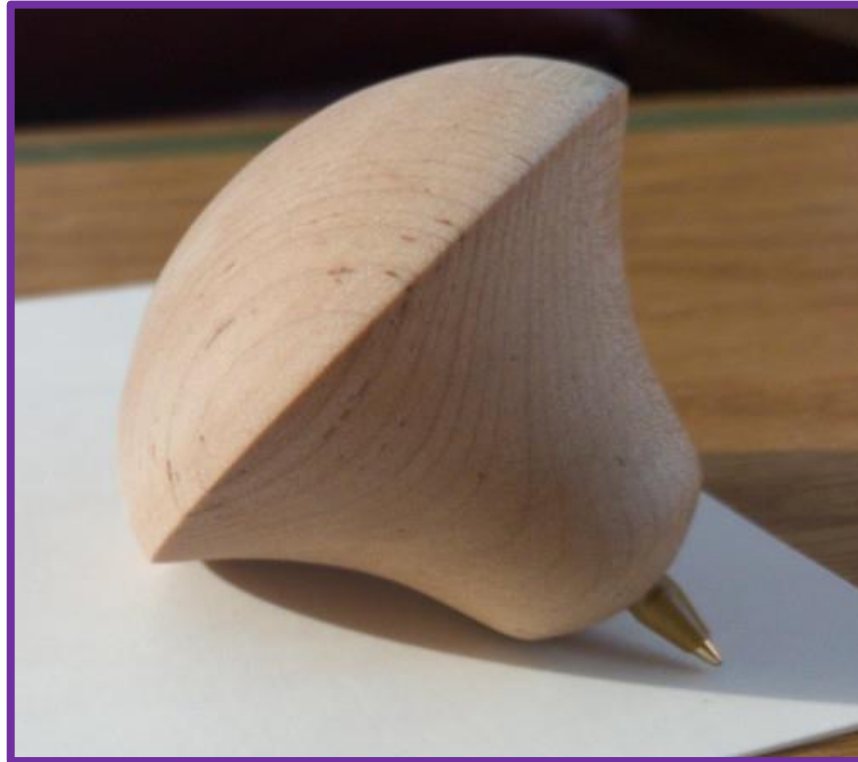
December Monthly Challenge – “Turn A Pen”

Linda Ferber



December Monthly Challenge –
“Turn A Pen”

Linda Ferber



One more pen for the arthritic hand.



December Monthly Challenge – “Turn A Pen”

Gary Egbert



This is a sample of the over 40 pens I have made during Covid. Most are made from 50-year-old air dried walnut or cherry harvested and milled by my father in Illinois. One is mesquite wood I got south of Tucson, AZ. The two lighter pens are made from zirbe wood (stone pine) I brought back from the Austrian alps near Innsbruck.



December Monthly Challenge – “Turn A Pen”

Charlie Prokop



3 pens turned from cutoffs that came from a large spalted birch burl



December Monthly Challenge – “Turn A Pen”

Brian Sick



Pen made from wenge and oak with veneer inserts (sorry I don't know the wood type).



December Monthly Challenge – “Turn A Pen”

Lee Luebke



These six pens are made with walnut burl



These refrigerator pens are maple and the top two are dyed with a wood dye

December Monthly Challenge – “Turn A Pen”

Jay Schulz

The two on the left in the back row are Olivewood, the middle one is dyed & spalted tamarind and the two on the right are Honduran rosewood



The front row left is a zebrawood barrel blank, the middle an acrylic barrel and the far right is dyed & spalted tamarind. All are made with Wallstreet pen kits and finished with shellac.



February Monthly Challenge

Submit your entries for the February Monthly Challenge
“Turn Something Lidded”

Submit your entries for the February Challenge during January!
Send them to mdrprof@gmail.com by January 26.

Remember, you may submit more than 1 entry so we may enjoy your turnings, but your name will only be entered in the drawing once, giving everyone an equal chance to win.

Future Challenges:

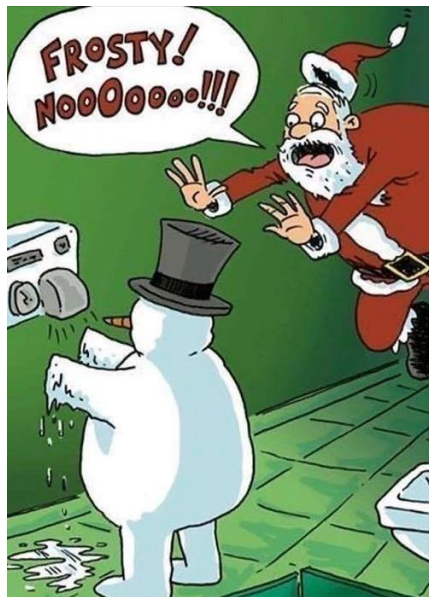
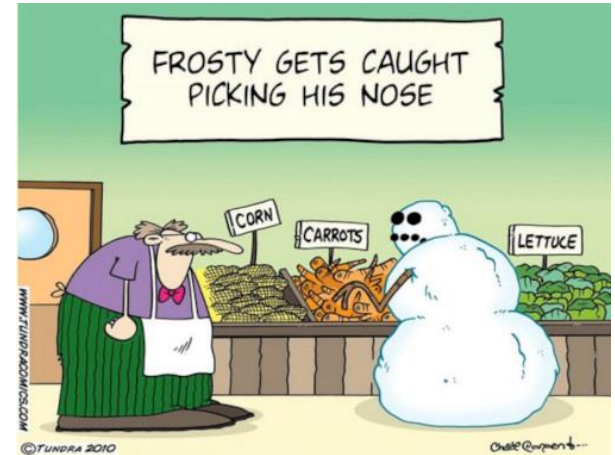
March (turn during Feb): Turn What You Do For A Traditional Bowl

April (turn during Mar): Turn Something Cut and Put Back Together

May (turn during Apr): Turn a Platter



Some left over Xmas cartoons



Death at the Lathe - Conclusion

A short story in 4 parts by Michael D. Rohrer

Synopsis of Episode 1

Dr. Mark Roberts is a retired professor of pathology at the University of Minnesota who lives by the “Witch’s Hat” water tower in Prospect Park near the campus. He has spent decades making furniture as a hobby and about 15 years ago got interested in woodturning. He took a class from David Ellsworth and they had become friends. Mark really enjoys turning Ellsworth style hollow vessels. During his career at the university, his research focused on the areas of bone cancer diagnosis and treatment. Not long before retirement a professor of surgery came to Mark with an idea for a new diagnostic technique, which Mark perfected. The surgery professor insisted they apply for a patent. One day Mark’s wife returned from volunteering at a neighborhood food shelf and quickly got supper on the table. When Mark didn’t come in to eat from his shop at his usual time, she went to his shop and found his lathe running and Mark in a pool of blood on the floor with a turning tool embedded in his chest.

Synopsis of Episode 2

Lt. Ed Sylvester, Head of the Homicide Unit of the Minneapolis Police Department, is a woodturner and is very interested in a report from the previous night shift about the death of a doctor in his woodturning shop. The sergeant who covered the case and the assistant medical examiner who was called both thought that it was a result of an unfortunate accident. Ed was embarrassed that he was probably more interested in what kind of lathe and shop the doctor would have than about his death. Never having heard of any turner dying in their shop from an accident, he immediately went to the death scene.

Continued on next page



Synopsis of Episode 2 (cont'd)

Checking the photos and report of the death, Ed found that the doctor had died from a skew being embedded 3-4 inches into his chest. Ed called and waked up the night shift sergeant and demanded he get there immediately. In the shop he saw that the doctor had been working on an Ellsworth style bowl and that the outside was finished. The doctor had been working on hollowing the interior. Ed noted two large, signed posters of David Ellsworth on the wall. When the sergeant arrived, Ed told him that a turner does not use a skew to hollow a big vessel and a catch would not throw a tool 4 inches into his chest. Lt. Sylvester tells his sergeant, "This was not a woodturning accident. This is MURDER!"

Synopsis of Episode 3

Lt. Sylvester started looking around Dr. Roberts' shop and was quite envious of his Vicmarc lathe and all the doctor's equipment and tools. He found an Ellsworth tool apparently misplaced in the rack with parting tools and a small skew. Everything was well organized. Along with the turning tools and equipment there were two expensive road bikes hanging on the wall and two large posters of David Ellsworth, signed by Ellsworth, with notes to Dr. Roberts. Lt. Sylvester then talked to the doctor's wife who said he had mentioned a disagreement with a colleague, Dr. Ralph Kitson. He talked with the next-door neighbor, a lady who had lived in that house for 88 years. She had seen someone outside Dr. Roberts' shop in surgical scrubs putting on surgical gloves. Ed asked his wife, Jules, a professor at the medical school, for help with the case. He valued her analytical brain and knew she was always discrete. She said she'd heard Dr. Roberts and Dr. Kitson arguing and she'd picked up a name. She found the person on Google and discovered she was a young professor in Quebec. From her recently published papers Jules thought she might be the true inventor of the material Drs. Roberts and Kitson were trying to patent. Lt. Sylvester realizes he needs to get in touch with the young professor in Canada immediately.

Continued on next page



PART FOUR

Ed had his secretary calling offices at the McGill University in Quebec to try to find Dr. Sylvie Lavoie and see if the phone number he'd found on the internet was for her office, lab or home. Meanwhile, Ed looked up Dr. Ralph Kitson in the University of Minnesota directory. He found his office address in the Phillips-Wangensteen Building and a couple of telephone numbers. The first was his office and a secretary said he was in surgery but planned on being in his lab after he finished, which would probably be mid-afternoon.

Ed's secretary waved at him, put her hand over the phone and said she had Dr. Lavoie on the phone, line 2. Ed punched the button and said, "Dr. Lavoie, this is Lt. Edwin Sylvester, Head of Homicide for the Minneapolis, Minnesota Police Department. Thanks for talking to me. I'm very sorry to have to tell you we're investigating the murder of a person I think you know, Professor Mark Roberts. Do you have a few minutes to talk to me?"

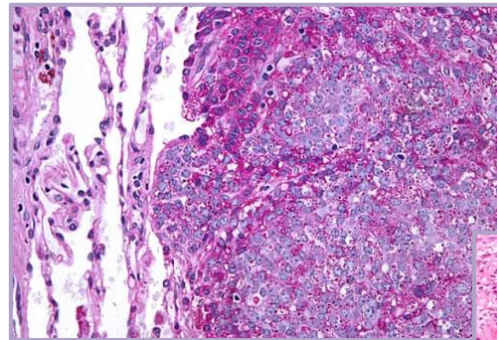
Dr. Lavoie gasped and said, "Oh, my gosh! That's terrible! Oh, just terrible! But why are you contacting me?"

"I also believe you know Professor Ralph Kitson."

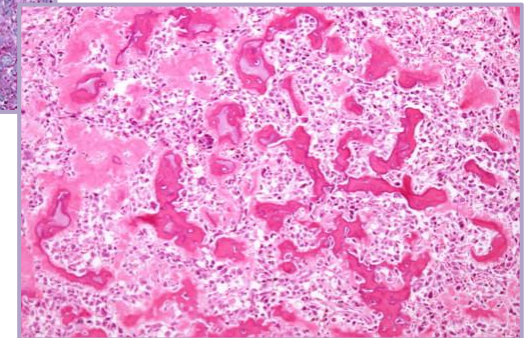
"Unfortunately, yes" Dr. Lavoie replied. Her voice belied her true feelings.

"Why unfortunately?"

Her voice rose with emotion and anger: "He's not a good person. He's dishonest! Dr. Ralph Kitson does not deserve to be a professor or a surgeon treating people!"



Microscopic sections
of osteosarcoma
(bone cancer)



“And why is that, Dr. Lavoie?” replied Ed. “Can you please explain why you have these feelings?”

“Certainly!” I was working on a Ph.D while I was doing my orthopedic surgery residency. Out of the research I found a new, better, faster way to diagnose osteogenic sarcoma, you know, bone cancer. I presented a paper at a small orthopedic meeting in Vancouver with people from the States and Canada. The paper I’ve submitted hasn’t come out in the journal yet, only the abstract from the meeting. But Ralph Kitson is stealing my discovery! He’s claiming he and Mark Roberts discovered it! Their research is in the same area as mine. He’s even filed a patent application on it! This is my original research! I discovered it first!”

“But how can he do that? Aren’t you complaining and putting up a fight in some academic area or legally? How can you let this happen?” asked Ed.

“I’m just a new assistant professor. Ralph Kitson is a well-known, very active and very important person in our field. He told me if I made any noise about this, he’d ‘bury me’ academically. He said he’d make sure I never got a decent position in any university medical school anywhere in the world now or ever in the future! He emphasized he could do it because of his position and reputation.”



McGill University, Montreal

Continued on next page

Death at the Lathe (cont'd)

Michael D. Rohrer



McGill University, Montreal



Ed spoke calmly and evenly. "Thank you so very much, Professor Lavoie. You have helped me more than you can know." Ed got in his car and headed over to the campus and parked in a "patient only" spot near the entrance of the Phillips-Wangensteen building. He had a short time before Kitson was supposed to be out of surgery, so he called Roberts' wife on his cell. When she answered Ed said, "Mrs. Roberts. I've just talked to a young woman who's a new professor at McGill University and she claims your husband and Ralph Kitson were stealing her discovery."

Continued on next page



Mrs. Roberts replied, "Mark was so upset with Ralph! He told him it was unethical and illegal to claim that they'd discovered the new treatment. Ralph kept telling him that their published research was so close to Sylvie's research nobody without their specific knowledge could ever know that. Mark and Ralph really had some arguments about that in the last couple of weeks. Mark wanted to withdraw their patent application. He said no matter how much money they'd make, it wasn't ethical, honest or legal and he didn't want to be a part of it."

Ed thanked Mrs. Roberts, clicked off his phone and headed immediately to Ralph Kitson's lab. He showed his badge and ID to a lab assistant who wanted to know who he was and what he was doing coming into this laboratory. Ed sat down in Kitson's chair at his desk in the small lab office, which had large windows and from which he could see everything in the lab.



Phillips-Wangensteen Building, Univ. of Minnesota Medical Campus



About 45 minutes later an older man walked quickly and purposefully into the lab, turned into the office, and stopped quickly. "What are you doing sitting at my desk?" he said very loudly. Ed introduced himself and told Kitson to sit down in the visitor's chair in the corner of the office.

Continued on next page

"You've heard about Dr. Mark Roberts' death. We are certain it was not accidental. I'm seriously concerned about your connection to Dr. Roberts' death", declared Ed.

"What do you mean? I was performing a surgery at the time and besides that, I've NEVER been in Mark's shop" shouted Kitson.

Ed calmly replied, "While I was waiting for you, I made some calls to the operating room folks. I found out you left before the end of the surgery, that you had your senior resident do all the easier wrap-up stuff and what they called the "closing." That was very close to the time Professor Roberts was murdered. I'm sure with just a little work I can discover it was exactly the time of his death."

"I had to get back to the lab to make sure an experiment had gone well", vehemently replied Kitson.

"A neighbor saw someone in scrubs outside Dr. Roberts' shop at that time. We'll do some checking with the lab personnel and see what their recollections of that exact time are. I think you decided to get rid of Mark Roberts because he wanted to drop the patent application and admit to the dishonesty that was taking place."

Kitson started shouting, "That's not true! I had been arguing strongly with Mark about his abandoning our research at a time when I needed him just so he could work in that goddamn woodshop of his making all his worthless, ugly, stupid bowls you can't even put anything in! What a waste of energy and time! The man has - - had a fantastic scientific brain!"

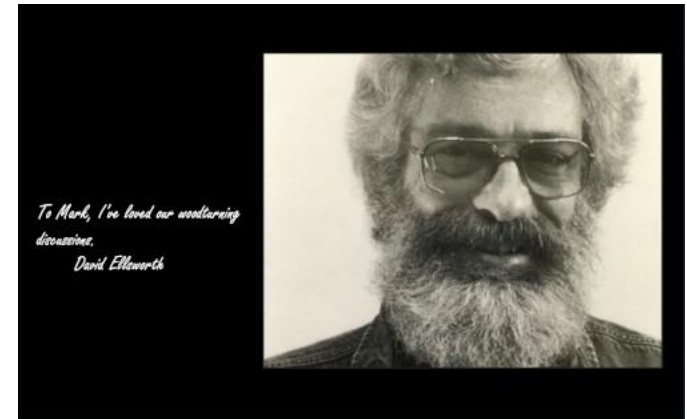
Continued on next page



Death at the Lathe (cont'd)

Michael D. Rohrer

“I couldn’t have killed him. I’ve NEVER been in his shop. He was obsessed with that stupid workshop and carving wood while it was going round and round”, shouted Kitson. He had walked away from his life of science! The legendary men of science were no longer his heroes. His heroes had become bearded wood guys who would autograph big posters that Mark would put on his walls and worship!”



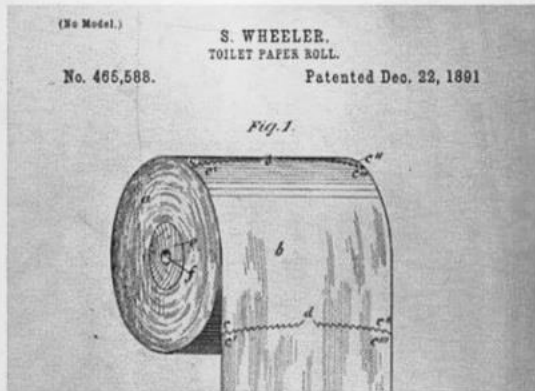
Ed slowly stood up, looked Dr. Ralph Kitson in the eye and said, “Dr. Ralph Kitson, I am arresting you for the murder of Dr. Mark Roberts. You have the right to remain silent. Anything you say can and will be used against you in a court of law. You have the right to an attorney. If you cannot afford an attorney, one will be provided for you.”

Ed turned Kitson around, put handcuffs on him, walked him out to the elevator in front of numerous shocked laboratory personnel, and smiled, thinking, “David, you have helped me again, in a way that you could never have imagined.”

THE END



The original patent from 1891 for a toilet paper roll shows the correct rolling direction, in case you ever doubted.



Linda Ferber

Linda Ferber co-authored an article with Marie Anderson in the December 2021 issue of American Woodturner, pages 32-37, "Ripples Become A Tsunami, The 2021 virtual WIT eXchange"



Linda also had a multiple section piece entitled "Team Triple Dares" in cooperation with Rosanne Gold and Daryl Gray on page 36



Maple Burls

Jim Mills



I ran into a fellow in Cologne (south of Waconia) that sold his mill and has several maple burls that he is willing to sell. If you are interested, call Stan at 612-581-0959.





John Schultz

I Need Wood Chips

This might be dangerous, in terms of getting a LOT, but I am looking for sawdust or shavings from woodturning to put around my hops (for brewing beer) to keep the weeds down.

I live in the Afton area but I am willing to pick up trash bags of clean shavings or sawdust in the East metro area. I have a trailer for larger quantities. (plastic trash bags would be a lot easier for me - don't have to return them!)

I am probably looking for 10- 20 yards of sawdust total.

I have a lot of weeds. And I'll probably use it on the path to the hops.

I'd like a limited amount of black walnut sawdust because it contains a compound called juglone. I found a good reference for walnut toxicity:

https://washtenawcd.org/uploads/5/9/2/0/59207889/black_walnut_toxicity_to_plants.pdf indicating the compound decays in about 2 months in soil plus hops are a pretty tough/aggressive plant and not listed as sensitive to juglone so I am not worried about a little (<10%) black walnut.

Contact info is

jcschultz01@hotmail.com

Continued on next page



WOOD SEALER

At this time sealer is available from:

Lee Luebke, Corcoran MN, lguebke@comcast.net

Julie Abbott, Eden Prairie MN, JulieAbbott@EdinaRealty.com

Bob Meyer, Lino Lakes MN, rjmbobco@comcast.net

Steve Mages, Minnetonka, smages@juno.com

Paul Laes, Cottage Grove, Woodforfun@hotmail.com

I am looking for others to sell sealer throughout the metro area.

Bring plastic jugs if you have them.

Sealer \$10.00 gallon.



We need heavy duty plastic jugs for dispensing sealer.

If you have any gallon containers, we could sure use them. It would be best if you could bring your empty containers to be filled.

The club now has a chip card reader so you can pay Lee Luebke by credit card or cash. Each gallon is still \$10.

Anyone wanting to sell sealer can buy a quantity from me if you like or take some gallons and sell them to members and send the money to Treasurer Mark Debe.

Lee Luebke, President MWA, 612-419-8743

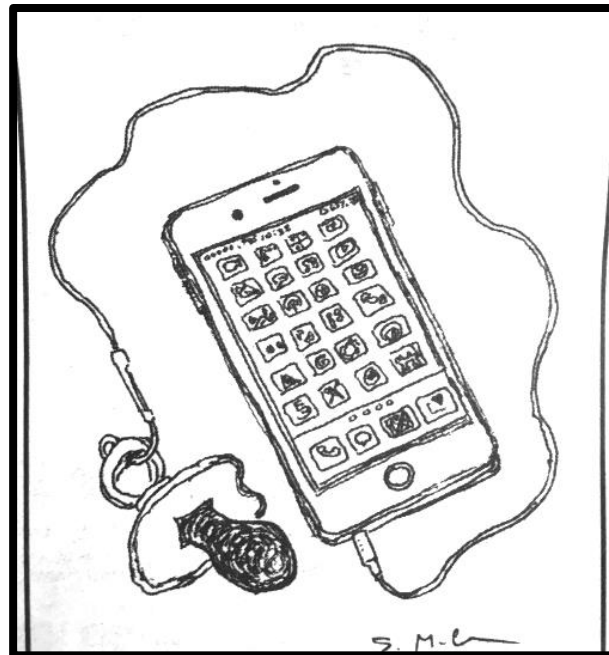
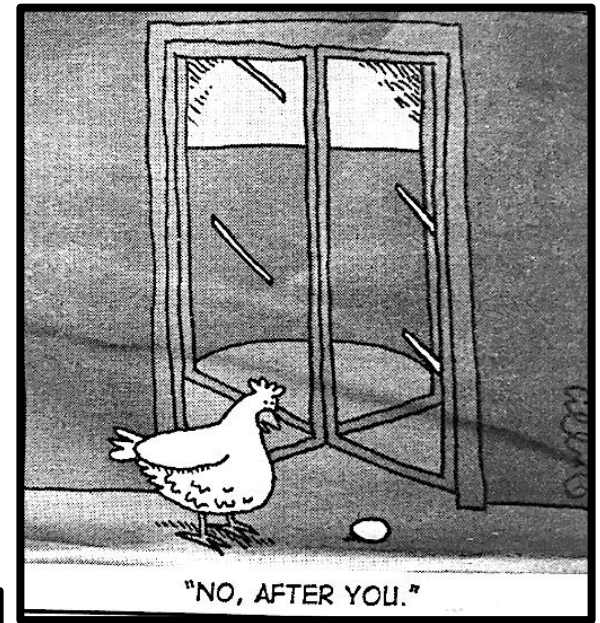


Please send items for the Bulletin Board to: mdrprof@gmail.com

As a group which cannot meet in person, we'd like to keep up with our friends and hear about awards, shows, family news (weddings, accomplishments of children and grandchildren), retirements, hospital stays, illnesses, book recommendations, website recommendations and anything else you would normally talk about in person at MWA or Sub-Group meetings. All of these and more are possibilities for the Bulletin Board. We're not seeing our MWA friends face-to-face, but we still need to stay in touch.

Dan Ernst-jigs for bandsawing big pieces and logs





New Members December 2021

Welcome all new members and we all look forward to getting together face to face as soon as we can.

Kevin Booth
Tom Varno
John Olson

Brooklyn Center
Roseville
Courtland



Lathe Contact List

The MWA Newsletter is presenting a list of members who would be happy to give you pros & cons and experiences with the lathes they own or with which they have had experience. This list is being updated every week as more members are contacting me saying they'd be happy to be listed. If you would be willing to have your name and email address listed under the type of lathe(s) you have, please contact me .

LATHE	Member	Email address
Bonnie Klein Mini 12x18	Linda Ferber	lindajaneferber@gmail.com
Craftsman Professional	Steve Mages	smages@juno.com
Delta mid size 12"	Randall Thompson	thomp013@umn.edu
Delta mid size 12"	Dan Larson	dhjlar@comcast.net
Delta midi	Bob Meyer	rjmbobco@comcast.net
Delta midi	Joe Zwirn	joezathome@msn.com
Grizzley G 0733	Martin Young	martin.clay.young@gmail.com
Harbor Freight(Central Machinery 10x18)	Rusty Ogren	rick.Ogren@consolidated.com
Jet 1015	James Zangl	james.zangl@gmail.com
Jet 12/21	Lee Luebke	lguebke@comcast.net
Jet 14x42	Rusty Ogren	Rick.Ogren@consolidated.com
Jet 1640	Joe Zwirn	joezathome@msn.com
Jet 1642 EVS	Jenny Trice	jennytrice@aol.com
Jet 1642 1.5 hp	Greg Just	woodturner07@gmail.com
Jet JML 10/14 Mini	Neil Robinette	northsideturners41@gmail.com
Jet JWL - 1220VS	John Campbell	campbell.jn@gmail.com

Continued on next page



Lathe Contact List (cont'd)

Laguna 12/16	Lee Luebke	lguebke@comcast.net
Laguna 18/36	Jay Schulz	jfschulz@comcast.net
Laguna 18/36	Dan Larson	dhjar@comcast.net
Laguna 18/36	Lee Luebke	lguebke@comcast.net
Laguna 18/36	Mike Lucido	mike.s.lucido@gmail.com
Laguna Revo 18/36 220v	John Campbell	campbell.jn@gmail.com
Laguna Revo 18/36 220v	Neil Robinette	northsideturners41@gmail.com
NOVA 3000	James Zangl	james.zangl@gmail.com
Nova Comet II	Rolf Krogstad	rolf.krogstad@gmail.com
Nova Comet II	Mike Anderson	manderson4700@comcast.net
NOVA DVR 16"	Dan Larson	dhjar@comcast.net
NOVA DVR 16"	Joe Zwirn	joezathome@msn.com
NOVA DVR XP	Bill Szydlo	szymlo.bill@gmail.com
NOVA DVR XP 16"	Chuck Shreffler	cshreffler@outlook.com
Oneway 2036	Dick Zawacki	dickzawacki@gmail.com
Powermatic 2014	Steve Legvold	stevelegvold@gmail.com
Powermatic 2520B	Steve Mages	smages@juno.com
Powermatic 3520B	Todd Williams	toddwilli@comcast.net
Powermatic 3520B	Steve McLoon	s.c.mcloon@gmail.com
Powermatic 3520C	Reid zimmerman	reidazimmerman@gmail.com
Powermatic 3520C	Dan Ernst	piloto1@comcast.net
Powermatic 4224B	Dan Larson	dhjar@comcast.net
Powermatic 45	Todd Williams	toddwilli@comcast.net
Robust American Beauty	Tim Dodds	tbikefast@aol.com
Robust Liberty	Jim Jacobs	woodmanmn@aol.com
Robust Liberty	Warren Gerber	xlwalleye@gmail.com
Robust Sweet 16	Linda Ferber	lindajaneferber@gmail.com
Robust Sweet 16	Bob Meyer	rimbobco@comcast.net
Shopsmith	Martin Young	martin.clay.young@gmail.com
Shopsmith (restored)	Lee Luebke	lguebke@comcast.net
Vega 2600	Bill Szydlo	szymlo.bill@gmail.com
Vicmarc VL 300	Lee Tourtelotte	leetourtelotte@icloud.com



Member Help Line

The club has organized a "Member Help Line", the purpose of which is to answer questions/give advice and help educate our membership. Even though it is more difficult during the Covid-19 social distancing time to help people in home workshops, there are still ways to help each other with woodturning questions/problems. The volunteers can help via email, telephone, Zoom, some personal contact using social distancing and masks, and probably other ways we haven't tried yet.

Maybe you're a beginner looking for advice on what to buy.

Maybe you have questions on chucking.

Maybe you have sharpening questions.

The volunteers listed on the next page are more than happy to help. Some have listed areas in which they feel more comfortable, but all will help with your woodturning question.

We would like more members to volunteer for our Member Help Line. If you would like to be "on call" please contact Mike Rohrer at mdrprof@gmail.com with your phone #, email address, area where you live, areas you'd be willing to help with, and your name will be added to the list.

Continued on next page



Member Help Line

Mike Rohrer	612-276-9556	mdrprof@gmail.com	bowls, boxes	South Mpls
Steve Miller	715 821-8726	ssmiller920@gmail.com	all types, light on segmenting	River Falls, WI
Lee Tourtelotte	612-670-1874	leetourtelotte@icloud.com	all types, beginner, advanced	South Mpls
Warren Gerber	651 403 2883	xlwalleye@gmail.com	Bowls	Mendota Heights
Jim Jacobs	651-497-1309	woodmanmn@aol.com	beginner/advanced, segmenting, skews	Hastings
Dick Zawacki	507-744-5748	dickzawacki@gmail.com	general, bowls, wood carving	Northfield
Mike Lucido	651-738-2551	mike.s.lucido@gmail.com	general woodturning	Woodbury
Bill Campbell	715-338-2634	wm.e.campbell@uwrf.edu	general woodturning	River Falls, WI
Mark Kelliher	651-636-8678	markandkathy007@comcast.net	general woodturning	Arden Hills
Todd Williams	651-274-4658	toddwilli@comcast.net	general woodturning	Lake Elmo
Bob Meyer	651-483-6187	rjmbobco@comcast.net	bowls, ornaments, sharpening, gen'l.	Lino Lakes
Dick Hicks		rbhicks@rbhicks.com	platters, spindle work, bowls	Zoom from shop
Steve Mages	952-544-5286	smages@juno.com	general woodturning	Minnetonka
Neil Robinette	763-639-1085	northsideturners1@gmail.com	sharpening, tool control, turning vs budget	Brooklyn Park
Andy Levesque	651-769-4070 TEXT	andy.m.levesque@gmail.com	resin/epoxy casting, hybrid turning, vacuum stabilizing, CNC & laser engraving	Lindstrom
Rusty Ogren	612-990-4857	rustywoodsart@gmail.com	resin questions, crack filling	Plymouth
Dan Ernst	651-280-7484	pilot01@comcast.com	coring, wing bowls, bowls, gen'l turning	Maplewood, St Paul
Bill Szydlo	651-206-5547	szydlo.bill@gmail.com	segmenting, sharpening, gen'l turning	Northfield, MN
James Zangl	6541-645-4696	james.zangl@gmail.com	bowls, hollow forms, vases, pens, etc	St Paul -Hamline area
Joe Zwirn	612-619-4793	joezathome@msn.com	segmenting, general woodturning	Brooklyn Center
Mark Palma	612-991-7733	marksworkshop@gmail.com	finishing & color	Lanesboro



Editor's Notes



We've gone through another year of restrictions because of the Covid pandemic. There have been many more serious problems than the disruption to our woodturners organization, including over 800,000 deaths, but focusing on the MWA, there continued to be a major disruption to our patterns of getting together, teaching and learning woodturning and making new friends and strengthening old friendships.

Our membership has stayed close to the pre-pandemic numbers. Not as many members as I would have expected participated in the MWA demonstrations by outside experts and the TTTU (Tuesday Turners' Tune Ups) produced by Dan Larson and Dick Hicks presenting local turning experts. For those of you who have not participated, they are all excellent and will undoubtedly help you with your woodturning hobby.

The newsletter was published weekly rather than monthly for 53 issues, then 2 a month for April and May and we returned to a monthly format in June. Because we're still not sure when we can meet in person, please submit things for the Instant Gallery and the Member Challenge. Remember, we do Tips For Turners and Ask A Turner that can come in handy given we're not meeting together.

I hope you enjoyed the serialized murder mystery I wrote, *Death At the Lathe*. I may consider continuing the adventures of the woodturning Head of Homicide, Lt. Ed Sylvester.

This issue marks four and a half years that I've enjoyed being the MWA Newsletter editor. Have a happy and safe 2022 and spend as much time as you can making wood chips at the lathe. I burned a few bowls in the fireplace over Christmas when our children and their families were at our house, demonstrating what an efficient hobby woodturning is, resulting in either gift-worthy pieces or interesting pieces of firewood.

Mike Rohrer
Editor

mdrprof@gmail.com

