

Rudolph Lopez Demo/Class Descriptions

www.RudolphLopez.com

Thin Stem Natural Edge Goblet from a Limb

We will be turning a thin stem natural edge goblet from a green limb approximately 1½" - 2" dia. I will show attendees the simple techniques I use to easily turn a thin stem natural edge goblet from a green limb using mostly a 1/2" or 5/8" side ground bowl gouge. I will explain limb selection, pith orientation, different techniques used for stabilizing thin stems, the use and sharpening of Negative Rake scrapers and drying to help avoid cracking.

Students will learn to use the side ground bowl gouge for spindle work with emphasis on tool control, improving their skill with the bowl gouge and also learn the technique and finesse needed for turning thin stems on goblets. (Length and thickness of stems can be adjusted to the ability/comfort level of students).

Skill level / Experience: Beginner with good basic knowledge of the lathe & tool use, turns currently.

Wood required; Green Limb sections approx... 1 ¾" – 2 ½" dia. about 12" long. Best to be left in long log sections to be cut to length the day of class to avoid end checks.

Tools & supplies; Face Shield recommended, **Safety Glasses required**, Chuck for 1"X 8 mini-lathe or lathe that will be used, 1/2" or 5/8" side ground Bowl gouge, 1/4" to 3/4" Round nose scraper, Parting tool, I will have some extra tools for students to use.



Rudolph Lopez Demo/Class Descriptions

www.RudolphLopez.com

Natural Edge Wing Bowl from a Half log or crotch section

We will be turning a thin natural edge wing bowl from a green log or crotch section. Design and layout considerations regarding limb orientation, crotch figure, keeping or eliminating features or flaws in the wood will be covered. The basics of bevel-supported cuts along with two of the most important fundamentals of turning - sharp tools and good tool control will be emphasized. Turning thin allows the wood to warp and move which influences the final piece and helps avoid cracking. I will explain using and sharpening Negative Rake scrapers their benefits and how safe they are to use. Sanding wet wood both on and off of the lathe along with different finishing techniques will also be covered.

Students will improve their skill with the side ground bowl gouge with emphasis on tool control and learn the technique and finesse needed for turning thin on interrupted cuts. (Thinness and complexity of bowl can be adjusted to the ability/comfort level of students).

Skill level / Experience: Intermediate with skills beyond the basics, familiar with using the side ground bowl gouge and able to comfortably turn a natural edge bowl.

Wood required; Green "Y" Crotch sections with limbs approx. 2"-3" dia. or straight log sections approx. 6" dia. X 6"-7" long.

Tools & Supplies; Face Shield Recommended, **Safety Glasses required,** Chuck for 1"X 8 mini-lathe or lathe that will be used, 1/2" or 5/8" side ground Bowl gouge, Round nose scraper, Skew, Parting tool. I will have some extra tools for students to use.



Rudolph Lopez Demo/Class Descriptions

www.RudolphLopez.com

Natural Edge End-Grain Vase

We will be turning a natural edge end grain vase from a green log using a bowl gouge and the Rolly Munro Hollower. I will explain limb selection, pith orientation and drying to help avoid cracking. We will cover the differences of cutting end-grain verses side-grain and using different end-grain hollowing methods. We will use the Rolly Munro Hollowing tool and discuss it verses the bowl gouge, scrapers or a hook tool along with the use and sharpening of the negative rake scraper. I will demonstrate how light can be used to gauge thickness, reverse jamb chucking to undercut and hollow the foot, and sanding wet wood on and off of the lathe.

Skill level / Experience: Beginner/Intermediate with skills beyond the basics, familiar with using the side ground bowl gouge and able to comfortably turn a natural edge bowl.

Wood required; Green log sections approx. 4" – 6" dia. X 6" long. Best to be left in long log sections to be cut to length the day of class to avoid end checks.

Tools & supplies; Face Shield recommended, **Safety Glasses required**, Chuck for 1"X 8 mini-lathe or lathe that will be used, 1/2" or 5/8" side ground Bowl gouge, 1/4" to 3/4" Round nose scraper, Parting tool, I will have some extra tools for students to use.



Rudolph Lopez Demo/Class Descriptions

www.RudolphLopez.com

A B C's of Bowl Turning (morning session)

We will first turn a shallow flat rim bowl then progress onto turning a natural edge bowl. Discussions on the correct sharpening of the side ground bowl gouge. We will cover the different cuts used and the when, why and how each cut should be used to turn bowls safely and efficiently with a cleanly cut surface that will reduce sanding. We will also discuss the layout of the bowl in the log relating to grain symmetry and to predict warping. Most of the emphasis in this class is on correct tool technique using bevel supported cuts and sharp tools. Students will be encouraged to concentrate on good tool technique and not so much on finishing bowls.

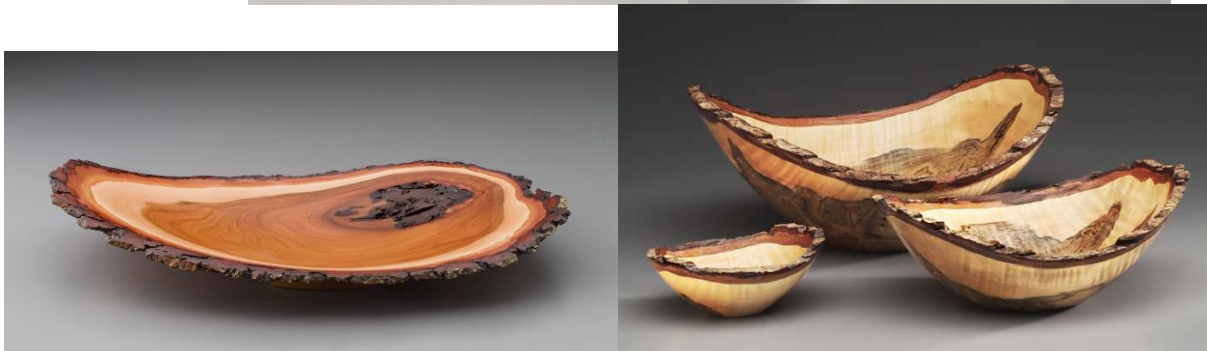
X Y Z's of Bowl turning (afternoon session)

Building on the correct bowl gouge techniques learned in the morning session students will improve on these to do more advanced bowl shapes such as closed form bowls, thin walled bowls, Calabash round bottom and elongated wing style bowls. I will explain and demonstrate the different bevel angles on the bowl gouges and how they relate to cutting different areas of the bowls. Also we will discuss some different tools and techniques used for these types of bowls and I will explain using and sharpening Negative Rake scrapers.

Skill level / Experience: Beginner with good basic knowledge of the lathe & tool use, turns currently.

Wood required; Green log sections approx... 6" -8" dia. X 8" long. Best to be left in long log sections to be cut to length the day of class to avoid end checks

Tools & supplies; Face Shield recommended, **Safety Glasses required**, Chuck for 1"X 8 mini-lathe or lathe that will be used, 1/2" or 5/8" side ground Bowl gouge, 1/4" to 3/4" Round nose scraper, Parting tool, I will have some extra tools for students to use.



Rudolph Lopez Demo/Class Descriptions

www.RudolphLopez.com

Twice Turned Vase or Bowl with Decorated Rim Detail from a Log

This is a somewhat challenging project which requires everything from basic spindle work to good tool control on interrupted cuts.

We will turn a vase from a log which is first turned long grain (spindle orientation) to put beads or cove decoration around the log. The log will then be repositioned to side grain orientation to shape the vase or bowl form. The bead/cove decoration now becomes a rim detail around the rim of the vase.

Skill level / Experience: Intermediate with skills beyond the basics, familiar with using the side ground bowl gouge and able to comfortably turn a natural edge bowl with intermittent edges.

Wood required; Green log sections approx. 5" – 6" dia. X 6" long. Best to be left in long log sections to be cut to length the day of class to avoid end checks.

Tools & Supplies; Face Shield Recommended, **Safety Glasses required**, Chuck for 1"X 8 mini-lathe or lathe that will be used, 1/2" or 5/8" side ground Bowl gouge, Round nose scraper, Skew, Parting tool. I will have some extra tools for students to use.



Rudolph Lopez Demo/Class Descriptions

www.RudolphLopez.com

Square to round Bowls, Vases and Hollow Forms

I will explain and demonstrate the process I use to create a bowl or vase, which is square on top and tapers to round at the bottom. Starting with a square or rectangular blank that has been prepared on a bandsaw to taper the sides, the remaining exterior corners will be turned leaving the four tapered sides previously cut on the band saw. Then the interior of the bowl or vase will be turned into the square top. The basics of bevel-supported cuts along with two of the most important fundamentals of turning - sharp tools and good tool control will be emphasized. I will demonstrate how and why this along with lathe speed affects how efficiently and cleanly interrupted edges can be turned safely. Techniques for sanding and/or embellishing the different surfaces of the forms will also be discussed. I will show a variety of ways blanks can be cut on the band saw which will start you thinking about how many different design possibilities there are for square to round bowls, vases and hollow forms. Attendees will learn the process I use to set-up and draw the layout of a design on the blank and how it is cut on the band saw and then oriented on the lathe to be turned.

This demonstration will provide attendees with a several new creative ideas and open up many new design possibilities.

Skill level / Experience: Beginner with good basic knowledge of the lathe & tool use, turns currently.

Wood required; Semi-dry or dry wood. For vases- **End Grain** lengths approx. 3"x 3" about 6" long. For bowls- **Side Grain** 6" x 6" square approx. 4" thick.

Band Saw required for cutting sides of blanks

Tools & supplies; Face Shield recommended, **Safety Glasses required**, Chuck for 1"X 8 mini-lathe or lathe that will be used, 1/2" or 5/8" side ground Bowl gouge, 1/4" to 3/4" Round nose scraper, Parting tool, I will have some extra tools for students to use

