

MINNESOTA WOODTURNERS

A S S O C I A T I O N

in association with the American Association of Woodturners

WINTER, 2000



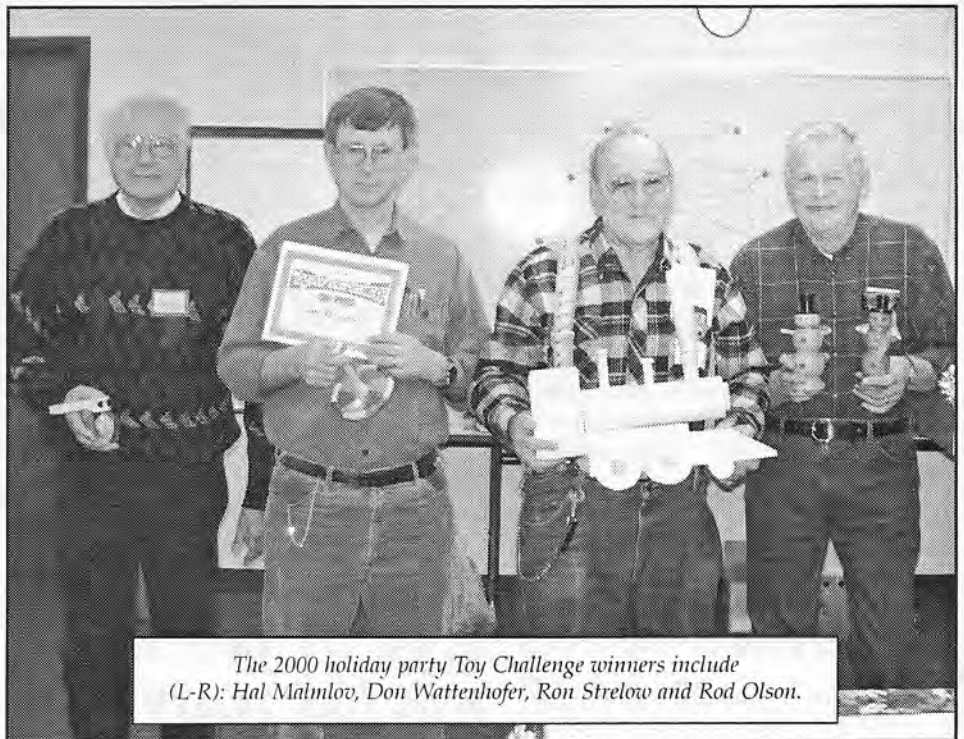
JANUARY MEETING **- Craig Lossing**

The January membership meeting will be on Saturday January 20, 2001 from 1:00 P.M. to 4:30 P.M. at the Commers Co. at 9150 35W West Service Road in Blaine. Directions: Take 35W north to Co. Rd. J (85th Ave. N.E.). Turn left and go over 35W to the West Frontage Road. Turn right and go north to Commers Co.

Bring your own chair to the meeting. Also bring show and tell items. There will be a wood raffle and refreshments.

Craig Lossing will be demonstrating various turning projects which will cover all levels of woodturning experience from beginner to expert. Craig is a member of MWA and is also a new member on the board.

He brings many years of woodturning experience to the MWA.



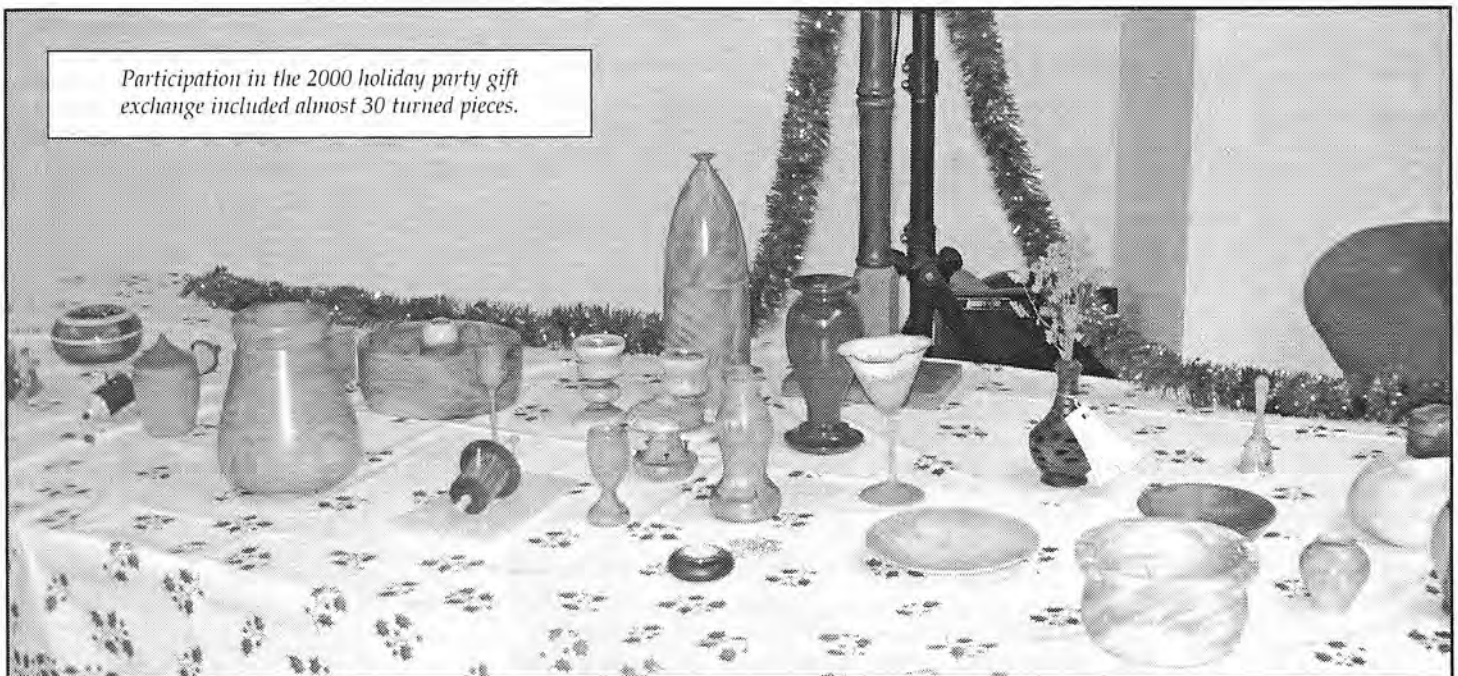
The 2000 holiday party Toy Challenge winners include (L-R): Hal Malmlov, Don Wattenhofer, Ron Strelow and Rod Olson.

FEBRUARY MEETING

The February membership meeting will be on Tuesday, February 20, 2001 from 6:30 P.M. to 10:00 P.M. at the Rockler's Store on Lyndale between Lake St. and 31st Ave. S. in Minneapolis. The focus of

the meeting will be on the best use of a piece of wood: bowl, platter, lamp, or fire-wood, etc. Topics will include grain alignment, crotch pieces, cutting blanks, etc. So bring a piece of wood or two that you would like to get some ideas on how best to use them.

Participation in the 2000 holiday party gift exchange included almost 30 turned pieces.



BOARD OF DIRECTORS MEETING

The first board meeting of 2001 will be on Wednesday January 10th at 6:30 P. M. We invite all members to offer input to the board. If you have ideas for meeting subjects or meeting locations; ideas for newsletter content; criticism (constructive please) of anything happening in the club; or ideas for anything else you would like the club to do, please contact any one of the board members listed in the newsletter.

PURCHASE OF MINI-LATHES

One of the goals for 2001 is to purchase two mini-lathes for the purpose of facilitating small group hands-on sessions. Since many of our new members are new to woodturning, this would provide opportunities to meet with more experienced turners who could share their knowledge. The portability of the mini-lathes would make it possible to have sessions in different geographical areas to accommodate our widespread membership. We would need volunteers to host these small groups. The volunteer hosts do not necessarily have to be the mentors or teachers, but should have space to accommodate 5-10 turners.

We could also expand our demonstrations at the Washington County Fair and the Tool Show at the State Fairgrounds depending on the number of volunteers. Additional ideas for demonstrations would



be at schools and retirement homes among others.

MWA 2000 HOLIDAY PARTY

Our annual Holiday Party was held on December 12, 2000...another huge success!!!! This year members' spouses and

significant others were invited; so, to accommodate everyone the party was held at the AAW facility in Shoreview, MN. For a change of pace we had 'pot luck'... with very tasty and delightful results.

Last year, we had our first "Toys for Tots" challenge with great success; so, this year we did a repeat, doubling the number of Toys and block sets donated to the local "Toys for Tots" program. Our "Toy" Challenge competition resulted in the following 'Certificate of Award' winners: 1st place-Ron Strelow, 2nd place-Rod Olson, 3rd place-Hal Malmlov, and 4th place-Don Wattenhofer. Nice job guys!!!

Members present also participated in our annual "Turned Gift" Exchange and drawing of over \$700 in gift certificates and prizes donated by MWA, Rocklers, Woodcraft, Craft Supplies, Craig Lossing, Abrasive Resources, and Shaw Lumber.

Our Thanks to: Mary Lacer and the AAW for hosting this great event, all the Board members and their spouses, Jerry Rauch and his decorating committee, Jim Jacobs for spearheading the "Toys" program, all the members who did yeoman duty making the toys and over 250 blocks, a special thanks to Cathy Nicholson for creating all those magnificent bags for the block-sets, and finally, our appreciation to Rod Olson for hand-delivering all the Toys out to the Family Services Div. Dakota County. We were happy to see Merrily Hehn at the party, and we want to thank her for using her calligraphy talent again on the Toy Challenge winners' certificates.

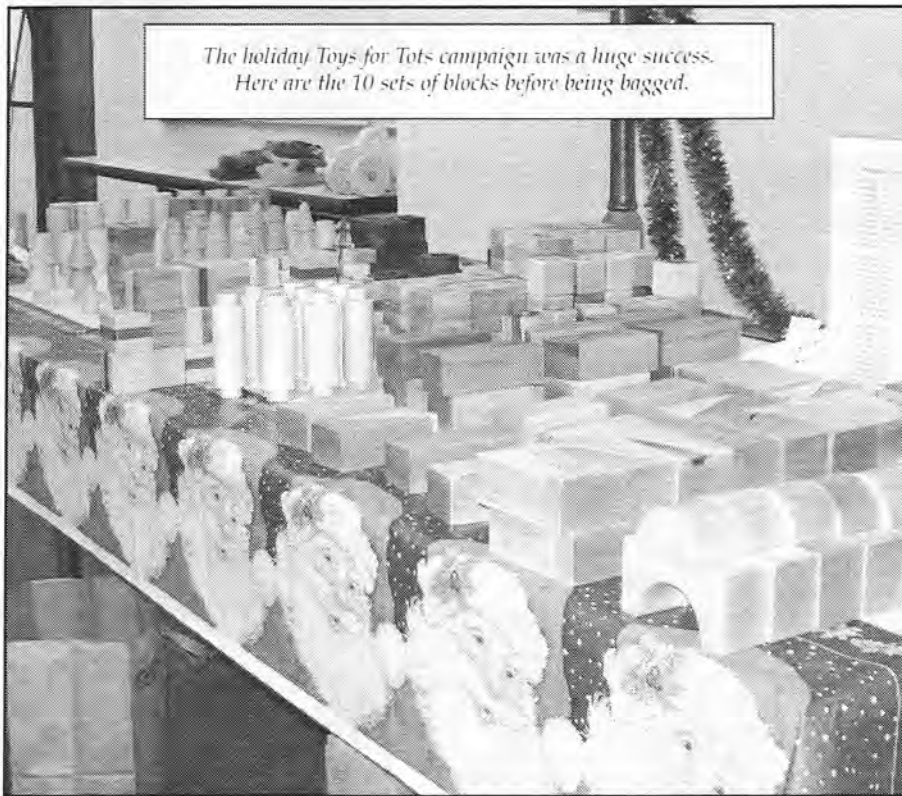
Our Club is Growing!

The Minnesota Woodturners Association is growing! Below is a list of the new members in the 4th quarter of 2000. Welcome the club, new members.

NAME	FROM
Jim Taglia	Grant, MN
John Plahn	Mound, MN
Andrew Cockcroft	Apple Valley, MN
Jim Hanley	Stillwater, MN
Bob Poole	River Falls, WI
Bill Clarke	Bloomington, MN
Mike Fredericks	Vadnais Heights, MN
Tom Osborn	Hastings, MN
Bill Tarzwell	Roseville, MN
Steve Bouchie	Osceola, WI
Dave Etter	N. St. Paul, MN
Carolyn Allard	Stillwater, MN
Karl Stauber	Stillwater, MN
Terry Erno	Osseo, MN
Pat Schuler-Brian Vroblusky	Robbinsdale, MN
Dick McMaster	Rochester, MN
Kurt Schumacher	Lake Elmo, MN

We have a total of 56 new members in the year 2000!

The holiday Toys for Tots campaign was a huge success.
Here are the 10 sets of blocks before being bagged.



The Board

President

Bruce Arones Ph.: 651-433-5364

Vice President

John Nicholson Ph.: 763-785-1587

Secretary

Open

Treasurer/Membership

Ron Meilahn Ph.: 651-633-8902

Newsletter Editor

Todd Schweim Ph.: 612-861-7409

Newsletter Mailing

John Ratliff Ph.: 651-770-6471

Librarian

Linda Ferber Ph.: 651-454-5774

Members-at-large

Don Wattenhofer Ph.: 612-572-1045

Craig Lossing Ph.: 651-785-4194

MEMBERSHIP RENEWALS ARE DUE

It is time to renew your membership for 2001. Members who attended the Holiday Party and paid their \$25 renewal dues have already received their new membership cards. For those who have already paid, but could not attend the party, your new membership cards are enclosed in this newsletter.

Also, to save postage and minimize handling, we have included the 2001 membership cards to all who have not yet renewed. To activate your 2001 membership please return the enclosed renewal form, along with your \$25 check, made payable to MWA. With 126 active members in 2000, the postage saved on this procedure will go a long way towards the cost of two new club lathes being purchased in 2001.

Please remember to include your new telephone 'area code' and E-mail address if they have changed.

In addition to receiving 10% discount at Rockler's and Woodcraft, we now have a similar 10% discount with Abrasive Resources in Fridley, MN. Our members have also just recently completed a group purchase with Craft Supplies of \$2506, with savings of over 19% off their catalog price. So, renew now to continue your many membership benefits!!

MINNESOTA WOODTURNERS ASSOCIATION MEMBERSHIP

YES! I would like to be a member of the Minnesota Woodturners Association. I understand I will receive all issues of the newsletter starting with the next mailing. I also understand I will be receiving a "new member kit" if applicable. Annual Dues: \$25.00.

AAW Member? New Member Renewing Member

Name _____

Address _____

City _____ State _____ Zip _____

Phone _____ e-mail address _____

I am interested in:

- Helping out at meetings
- Being on the planning committee
- Helping at demos and shows
- Serving on the board
- Contributing to the newsletter

Notice! The potential for accident or injury does exist! By signing below, you agree to accept full and all responsibility for any accident, injury, or loss which may occur to you at the meeting or meeting site, and to release from liability the "Minnesota Woodturners Association", all members and officers of the "Minnesota Woodturners Association" and any person, company, or entity associated with the location where the meeting is held.

Signature _____

Mail this application to: MN Woodturners Association, % Ron Meilahn,
1638 23rd Ave. NW, New Brighton, MN 55112

First-Class Mail

Minnesota Woodturners Association
 1638-23rd Avenue NW
 New Brighton, MN 55112



**MEMBER
HOTLINE**

The activities of this club are the product of many volunteer efforts by a number of people. The following individuals have volunteered to help out from time-to-time in various ways. Please let them know you appreciate their efforts when you see them. Also, if you would like to volunteer, just let Bruce Arones know and he will add you to the list.

GROUP PURCHASES

Bruce Arones651-433-5364
 Ron Meilahn651-633-8902

WOOD RAFFLES

John Ratliff651-770-6471
 Wayne Keifer952-496-1280

MENTORSHIP

John Magnussen...763-477-6294
 John Engstrom...952-475-0307
 Jim Jacobs651-437-2302
 Tom Sheilds507-625-4186
 Mel Turcanik507-634-7570

GLUE SALES

Hal Malmlov952-831-7676

MEMBERSHIP SERVICE

Ron Meilahn651-633-8902
 Bruce Arones651-433-5364

LIBRARY

Linda Ferber651-454-5774

REFRESHMENTS

Duane Gemelke...763-566-8516
 John Ratliff651-770-6471

PROGRAMS

Mary Lacer651-484-9094

PERMANENT SITE SEARCH

Duane Gemelke...763-566-8516
 Mary Lacer651-484-9094
 John Ratliff651-770-6471

NEWSLETTER

Todd Schweim...612-861-7409
 John Ratliff651-770-6471

VIDEO

Jim Jacobs651-437-2302
 George Dupre715-448-3002



MEMBERS: If you would like to sell any of your woodworking tools or equipment through the Minnesota Woodturning Association's newsletter, now is your chance!

Simply type up the information and send it to:

Todd Schweim
 Editor, MWA newsletter
 7644-1/2 Lyndale Avenue South
 Minneapolis, MN 55423

INCREDIBLE WOOD! FANTASTIC PRICES!

Bocote	\$14/bd. ft.	Chechen Burl	\$5/lb.
Mex. Cocobolo	\$15/bd. ft.	Ramone Burl	\$5/lb.
Paela	\$8/bd. ft.	Ziricote Burl	\$5/lb.
Redheart	\$8/bd. ft.	Spanish Olive	\$3/lb.
Honduras Rosewood	\$16/bd. ft.	<i>Other woods available!</i>	
Ziricote	\$16/bd. ft.	Call Craig Lossing	
Lignum Vitae	Cheap	(651) 785-4194	
Snakewood logs	\$12/lb.		

CLASSIFIED ADS

Turning related ads are free to members. Commercial ads are billed at \$4 per month, per column inch. To place an ad, call Todd Schweim (612) 861-7409.

Ads will run one issue unless you call to extend your ad each additional issue. Call for submission deadline information.