

---

---

# Minnesota Woodturners Association

---

---

March 1995

---

---

## LOCAL CHAPTER OF THE AMERICAN ASSOCIATION OF WOODTURNERS

### NATIONAL SYMPOSIUM

June, July and August are months we do not schedule meetings but a reminder that the 1995 National AAW Symposium sponsored and run by the American Association of Woodturners



is being held July 6th through July 8th at the University of California at Davis, California. This is an event that can be enjoyed by anybody with an interest in woodturning and is a fantastic learning experience. Following are several members who have attended past symposiums and would

be glad to answer any questions about the symposiums they attended. Mary Redig, Don Watenhofer, Chuck Pitschka, Earl Sack, Chuck Sjodin, Dick Paradise, Mel Turcanik, Dave Schneider. We will also have information pamphlets available at the next meetings.

---

### NORTHERN WOODS WOODWORKING EXHIBITION

A reminder to all members that the Northern Woods Woodworking Exhibition will be held October 19-22, 1995 at Southdale Center in the

Garden Court. All members are eligible to enter up to 2 pieces in the show for an entry fee of \$25 and will be eligible for all awards including the Best Turning Award with a prize of \$100 which is being supplied by our club. This exhibition provides you with an opportunity to see some of the best woodworking and woodturning in Minnesota. You will be able to meet some of the artists and see demonstrations by Members of the Minnesota Woodturners association. Please contact Don Wattenhofer or Chuck Pitschka if you would like to be a demonstrator.

### Inside This Issue

- |   |                                       |
|---|---------------------------------------|
| 1 | National Symposium                    |
| 2 | Meeting Dates and Information         |
| 3 | Northern Woods Woodworking Exhibition |
| 4 | Board meeting of 2/16/95              |
| 5 | Past Meetings                         |

## MEETING DATES AND INFORMATION

**March 14th, 1995, Tuesday  
7:00 PM - 9:00 PM  
PHOTOGRAPHY.**

Jim Tracy will show his techniques for photographing turnings. He will have a camera, backdrop and lighting setup. He will also photograph turnings that members bring to the meeting. (limit two please).

Feel free to bring your own cameras, take your own photos and hopefully learn how to use your camera better.

The meeting will be held at the Woodcraft Store, 9741 Lyndale Ave S. Bloomington, Mn (884-3634). This is approximately 2 miles south of I-494 and 1/4 mile east of I-35W. The store hours for that day will be 9:00AM - 6:00PM. They will be closed between 6:00 and 7:00PM and will open at 7:00PM for us. They will be open for sales to us during and immediately following our meeting.

Please bring "Show and Tell items". These can be anything from the best of, the worst of, mistakes we do not want to

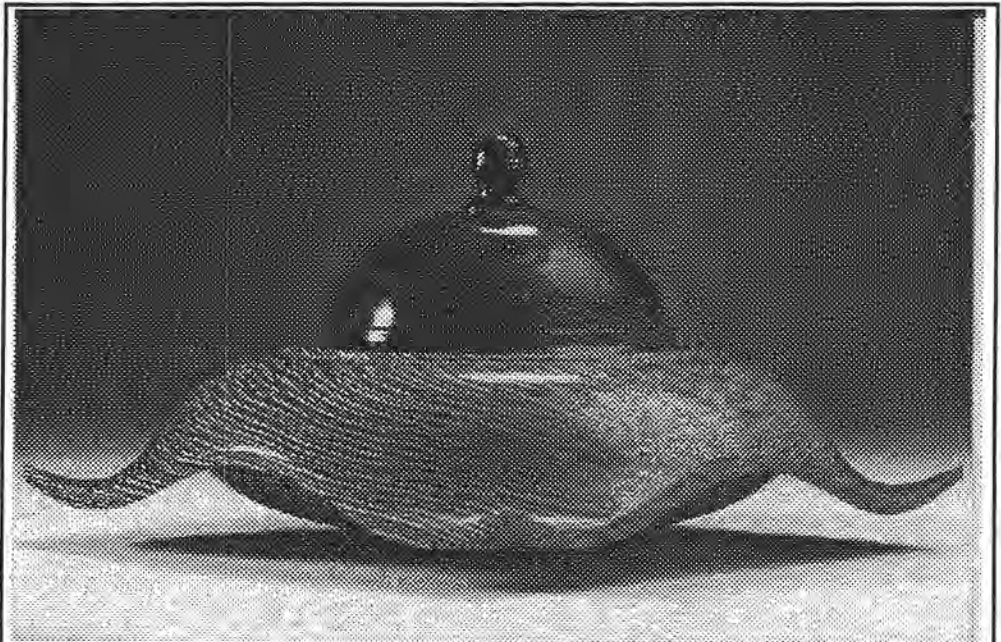
repeat, etc. Remember, we all learn continually.

**April 15th, 1995, Saturday.  
9:00 Am to 5:00 PM  
PROFESSIONAL  
DEMONSTRATION.**

This meeting is jointly

This will be an all day demonstration by Professional Wood Turner Michael Mode.

Michael is an accomplished professional woodturner from New Haven, Vermont. He has worked as a professional woodturner for approximately 15 years. Prior to that, he



**An Example of Michael Modes Work**

sponsored by The Minnesota Woodturners Association and The Minnesota Wood Workers Guild.

The meeting will be from 9:00 Am to 5:00 PM with a 1 hour lunchbreak. (Lunch is not included but there are several good restaurants within walking distance).

worked for approximately 10 years as a professional furniture maker, carpenter, home builder and professional musical instrument maker. Michael has shown his work at numerous shows throughout the United States, has had his work published in numerous publications in the United States and Europe, and is an accomplished instructor / demonstrator.

Michael gave a very interesting demonstration to our association in April of 1988. Michael specializes in lidded vessels, natural edge forms, use of green wood, wood inlays, delicate, elaborate forms, French polishing, and finishing techniques.

Michael uses a strobe light to produce a stationary image of spinning objects. This is particularly useful when using highly figured woods, and when turning natural edge objects.

Michael will also be showing his work at the ACC Craft Fair at the Saint Paul Civic Center, April 20-24.

This meeting will be held at the Woodcraft Store, 9741 Lyndale Ave S. Bloomington, Mn (884-3634). This is one of the few meetings that we will have a charge for and registration will be limited to approximately 30 people so it will be advantageous to get your payment in as early as possible.

The cost is:

\$15.00 for members received prior to April 8, 1995

\$20.00 for non-members received prior to April 8, 1995

\$20.00 for members at the door

\$25.00 for non-members at the door

Send your check to: (make check payable to "Minnesota Woodturners")

Ron Meilahn  
Treasurer, Minnesota Woodturners  
1638 23rd Ave NW  
New Brighton, MN 55112

**May 13th, 1995, Saturday  
1:00 to 4:00 PM  
WOODTURNING  
DEMONSTRATION,  
TOOL AND WOOD SWAP**

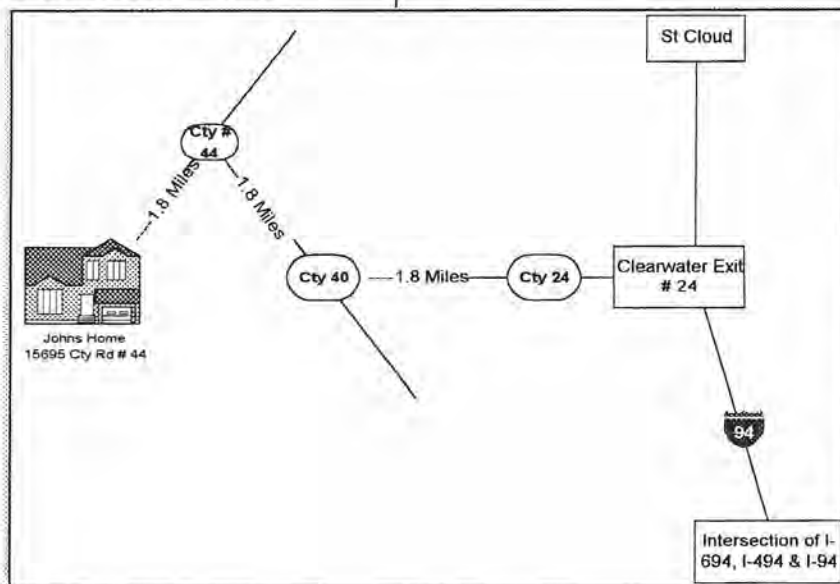
John Berglund will give a woodturning demonstration at his shop. For those who may not know John, he is one of our most experienced members, and makes his living as a professional woodturner.

Also at this meeting we plan to have a wood and tool

swap. We have had several in the past and they have been quite successful. Everybody is welcome to bring any wood or tools of any type that they would like to trade or sell.

Johns house is about 10 miles south of St Cloud and is about a 1 1/2 drive from the center of the Twin Cities.

Directions to Johns: Take I-94 to the Clearwater exit # 24. Turn left (west) and take Cty # 24 about 1.8 miles to Cty # 40. Turn right (northwest), and go about 1.8 miles to the stop sign at Cty Rd # 44. Turn left (southwest), and go about 1.8 miles to Johns house. 15695 County Rd # 44. Johns house is the 2nd one past Crescent Avenue. It is a Grey house with a grey garage. Bring a chair, and a jacket if it is cool. Ask other members if they are going as you may want to carpool with someone.



## BOARD MEETING OF FEBRUARY 16, 1995

The Board met and discussed various issues and the following decisions were made:

The Board voted to donate \$200 to Arrowmont School of Arts and Crafts in Gatlinburg, TN. Arrowmont is nationally known for its classes and has presenters in several areas of the Arts and Crafts. We also understand it has grants and scholarships for people that could not otherwise afford training.

The Board voted to award a \$25 gift certificate at each of the next 3 meetings. A drawing will be held for a \$25 gift certificate and to be eligible, you must be a member, signed up at the door and present at the meeting.

We would be very interested in any suggestions as to how to increase our membership, improve the quality of our programs and any other suggestion that will make this a better Association for all of our present and future members.

## PAST MEETINGS

### January 10, 1995.

We met at Tim Manning's shop for a very interesting meeting where we shared information on tools, jigs, chucks, homemade tools, calipers, etc.

We want to thank everyone who shared information on their tools and experiences. We also want to thank Tim for letting us meet at his shop, and for showing us his equipment and setup.

Some of the things that were shown or discussed:

- Dave Schneider brought his "One Way Stronghold Safety Scroll Chuck". He had written about this chuck in our last newsletter. Seeing it before me, made quite a positive impression on me. It is big, and heavy duty, and certainly looks like it would live up to its name, "Stronghold". It is a similar type of chuck as the "Nova" chuck, but appears to have a capacity to hold bigger items, and possibly with more strength than the "Nova" chuck.

- Several replaceable tip, live tail centers, were shown. Both "Delta", and "Nova" sell such centers. One of the big advantages of a replaceable tip

tail center is that you can make tips to serve a variety of purposes. Also shown were a number of homemade, wooden centers and jigs, which had been made to fit in the centers.

- For people who use a "Nova" chuck on a "Shopsmith" lathe, it was pointed out that the set screw does not fully contact the flat spot on the "Shopsmith" drive shaft. To remedy this, it is necessary to place a washer between the headstock, and the "Nova" chuck.

- For making lamps, Don Wattenhofer drills the center hole first. For the drive end, he has made a steel shaft which fits inside the hole, but has a collar, with some protrusions. For the tailstock end, he has made a steel shaft which fits inside the hole, also has a collar, and is held by the replaceable tip, live tail center. It amazed me with its simplicity, and efficiency with which it must work.

- Several devices were shown for holding a bowl, so its bottom could be turned. Mel Turcanik said that he had had problems using the cole jaws for the "Nova" chuck. The first problem was that the rubber bumpers seemed to be too soft, and lead to chatter at times. To remedy this, he replaced the bumpers with 1/2 inch size

faucet washers from a hardware store. The faucet washers are harder than the "Nova" washers. He found that he could get screws to hold the washers on at a "NAPA" auto parts store. The size of the screws is 6M-1, which is metric 6 mm pitch.

He also has had problems with bowls flying off the jaws. To remedy this, he places about eight strips of masking tape, over, and around, the bowl and jaws.

- Paul Kachelmyer showed some "Merit" sanding discs. These are 3 inch diameter sanding discs which quickly snap on and off a holder, which is held in a drill. These discs are made for sanding metal, and have tremendous resistance to wear. When used on wood, they seem to last about 20 times longer than regular sandpaper. They come in a number of sizes of grit. They are available from some local tool supply companies, and also from "Craft Supplies", in Provo, Utah.

When the discs wear out, you can glue foam on them, and sandpaper on that, to make discs for sanding the insides of bowls. Paul finds that one inch thick, very soft foam, works great. If less flexibility is desired, The 1/4 inch thick, heavy foam, computer "mouse

mats" work real well as a backing material.

- Paul Kachelmyer showed a pistol grip, angle head drill. This type of drill is easier to hold, for sanding on turnings, than standard drills. Several professional tool manufacturers, make these drills, which sell for about \$150.00 each. Seven Corners Ace Hardware, in Saint Paul, carries several makes of these. Paul's experience is that the power drills that sell in the \$30.00 range, will burn out easily, if used to do a lot of sanding (He has burned out 3 "Craftsman" drills).

- A "Stephan See Through Grinder" was shown. This is a sharpening grinder that "Woodcraft" has started to sell. It is expensive, \$350.00, and very interesting. The sharpening disk has holes in it, that allow the edge of the tool to be seen, as it is being sharpened. It is very easy to use. This has apparently been available in Europe for many years, but is just now being sold in the United States.

- Many other tools were talked about, and shown.

- **At our December meeting** Mary Thouin talked about sandpaper that she uses, that cuts much faster than most sandpapers, lasts much longer,

and will not leave dark residue on light woods. It is "Eagle Brand Abrasive Paper" by "Kovax", and is made in Tokyo Japan. She has ordered it from "Arne's Paint" in northern California, 916-742-2431. It is quite expensive, but she feels that it is well worth the price.

**CLASSIFIED ADDS:** Any member wanting to place an add,(free to members) send the pertinent information to Paul Kachelmyer, at 558 Farrell st. Maplewood Minn. 55119 or Dave Schneider at 16777 Thatcher Rd, Eden Prairie, MN 55347. We will put it in the next newsletter.

---

### ARTICLES FOR THE NEWSLETTER

All members are encouraged to take part in the Newsletter by placing items for sale, items wanted, suggestions on articles they would like to see and we definitely encourage anybody to submit any article(s) to be published.

---

Safety:

We wish to remind all members and guests, that woodturning can be dangerous. Many of our members have had accidents, and injuries, of some sort, with the lathe. This is a reminder, that by attending our meetings, or using information from our meetings, you do so at you own risk.

We do ask everyone attending a meeting to sign a "sign in sheet and liability release", for that meeting. This includes nonmembers, and insures that everyone attending, has signed a liability release. We also want to remind you that if you wish to be near the lathe, at a demonstration, that you should be wearing approved eye protection.

---

**SPECIAL THANKS**

To all members that have loaned us the use their homes or facilities for our meetings and demonstrations and specifically to The Woodcraft Store for their generous loaning of their store space for our meetings and demonstrations.